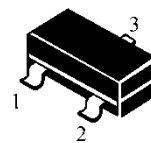




2SC2712

SOT-23

- 1. BASE
- 2. EMITTER
- 3. COLLECTOR



■ MAXIMUM RATINGS 最大额定值

Characteristic 特性参数	Symbol 符号	Rating 额定值	Unit 单位
Collector-Emitter Voltage 集电极-发射极电压	V_{CEO}	50	Vdc
Collector-Base Voltage 集电极-基极电压	V_{CBO}	60	Vdc
Emitter-Base Voltage 发射极-基极电压	V_{EBO}	5.0	Vdc
Collector Current-Continuous 集电极电流-连续	I_c	150	mAdc

■ THERMAL CHARACTERISTICS 热特性

Characteristic 特性参数	Symbol 符号	Max 最大值	Unit 单位
Total Device Dissipation 总耗散功率 FR-5 Board(1) $T_A=25^{\circ}\text{C}$ 环境温度为 25°C Derate above 25°C 超过 25°C 递减	P_D	225 1.8	mW mW/ $^{\circ}\text{C}$
Total Device Dissipation 总耗散功率 Alumina Substrate 氧化铝衬底,(2) $T_A=25^{\circ}\text{C}$ Derate above 25°C 超过 25°C 递减	P_D	300 2.4	mW mW/ $^{\circ}\text{C}$
Thermal Resistance Junction to Ambient 热阻	$R_{\theta JA}$	417	$^{\circ}\text{C}/\text{W}$
Junction and Storage Temperature 结温和储存温度	T_J, T_{stg}	-55to+150 $^{\circ}\text{C}$	

■ DEVICE MARKING 打标

2SC2712

H_{FE}:70-140=LO; 120-240=LY; 200-400=LG; 350-700=LL



2SC2712

■ ELECTRICAL CHARACTERISTICS 电特性

($T_A=25^{\circ}\text{C}$ unless otherwise noted 如无特殊说明, 温度为 25°C)

Characteristic 特性参数	Symbol 符号	Min 最小值	Type 典型值	Max 最大值	Unit 单位
------------------------	--------------	------------	-------------	------------	------------

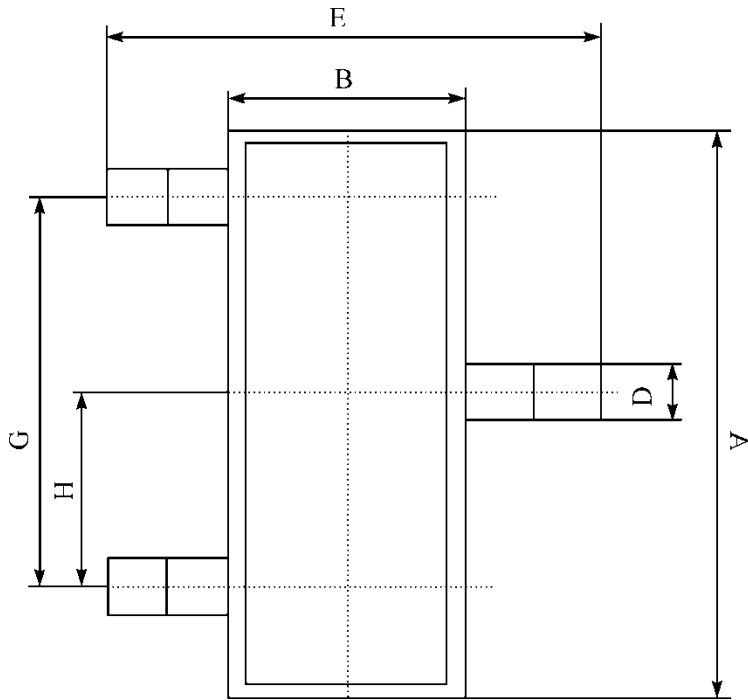
■ OFF CHARACTERISTICS 截止电特性

Emitter Cutoff Current 发射极截止电流($V_{EB}=5.0\text{v}, I_C=0$)	I_{EBO}	—	—	0.1	μA
Collector Cutoff Current 集电极截止电流($V_{CB}=60\text{v}, I_E=0$)	I_{CBO}	—	—	0.1	μA
Collector Saturation Voltage 集电极饱和压降($I_C=100\text{mAdc}, I_B=10\text{mA}$)	$V_{CE(\text{sat})}$	—	0.1	0.25	Vdc
DC Current Gain 直流电流增益($V_{CE}=6.0\text{v}, I_C=2.0\text{mA}$)	H_{FE}	70	—	700	
Gain Bandwidth Product 增益带宽乘积($V_{CE}=6.0\text{v}, I_C=1.0\text{mA}$)	f_T	80	—	—	MHz
Noise Figure 噪声系数 ($V_{CE}=6\text{V}, I_C=0.1\text{mA}, f=1\text{kHz}, R_g=10\text{k}\Omega$)	NF	—	1.0	10	dB
Output Capacitance 输出电容 ($V_{CB}=6\text{v}, I_E=0, f=1.0\text{MHz}$)	C_{ob}	—	2.0	3.5	pF

1. FR-5=1.0×0.75×0.062in.
2. Alumina=0.4×0.3×0.024in.99.5% alumina.

2SC2712

■ DIMENSION 外形封装尺寸



序號	數值及公差
A	2.90 ± 0.10
B	1.30 ± 0.10
C	1.00 ± 0.10
D	0.40 ± 0.10
E	2.40 ± 0.20
G	1.90 ± 0.10
H	0.95 ± 0.05
J	0.13 ± 0.05
K	$0.00 - 0.10$
M	≥ 0.2
N	0.60 ± 0.10
P	$7 \pm 2^\circ$

