

# SMD POWER INDUCTOR



## P10DR54 SERIES

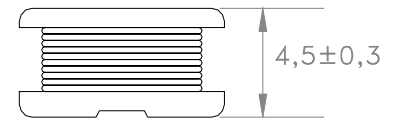
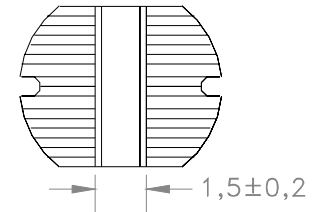
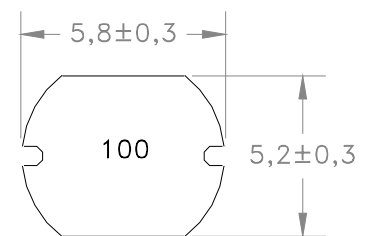


- RoHS Compliant Product
- Inductance measured :  $< 100\mu\text{H}$  : 100KHz,  $0.25V_{\text{RMS}}$
- Inductance measured :  $\geq 100\mu\text{H}$  : 1KHz,  $0.25V_{\text{RMS}}$
- Inductance Tolerance: J= $\pm 5\%$ , K= $\pm 10\%$ , L= $15\pm\%$ , M= $\pm 20\%$   
Add suffix letter for tolerance after the part number
- $I_{\text{RATED}}$ : Max 10% inductance drop and  $\Delta T=40^{\circ}\text{C}$  Temp Rise
- Operating Temperature:  $-40^{\circ}\text{C}$  to  $+85^{\circ}\text{C}$

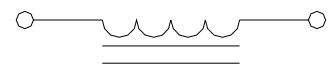
## ELECTRICAL SPECIFICATION @ 25°C

PART NO	L $\pm 20\%$ ( $\mu\text{H}$ )	DCR Max ( $\text{m}\Omega$ )	RATED $I_{\text{DC}}$ (A)
P10DR54-			
1R0	1.0	15	5.9
1R5	1.5	25	4.7
1R8	1.8	30	4.0
2R2	2.2	35	3.8
2R7	2.7	40	3.4
3R3	3.3	45	3.3
3R9	3.9	50	2.9
4R7	4.7	60	2.8
5R6	5.6	70	2.4
6R8	6.8	80	2.1
8R2	8.2	90	2.0
100	10	100	1.4
120	12	120	1.4
150	15	140	1.3
180	18	150	1.2
220	22	180	1.1
270	27	200	1.0
330	33	230	0.9
390	39	320	0.8
470	47	370	0.72
	$\pm 10\%$		
560	56	420	0.68
680	68	460	0.61
820	82	600	0.58
101	100	700	0.52
121	120	930	0.48
151	150	1100	0.40
181	180	1380	0.38
221	220	1570	0.35
271	270	1650	0.32
331	330	1700	0.28
391	390	1800	0.26
471	470	2300	0.23
561	560	2500	0.20
681	680	3000	0.19
821	820	4500	0.16
102	1000	4800	0.14

## Mechanical



## Schematic



### Dimensions

Unless otherwise specified, all tolerances are:  
 inch: .XX :  $\pm 0.015$  .XXX :  $\pm 0.004$   
 mm: X,X :  $\pm 0,38$  X,XX :  $\pm 0,10$

P10DR54-XX  
0602JW

Product performance is limited to specified parameter. Data is subject to change without prior notice.

2463 208th, Ste. 205  
Torrance, CA 90501

Phone: (310)533-1455  
Fax: (310)533-1853

<http://www.mpsind.com>  
Email: [sales@mpsind.com](mailto:sales@mpsind.com)