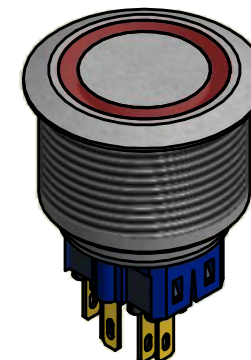
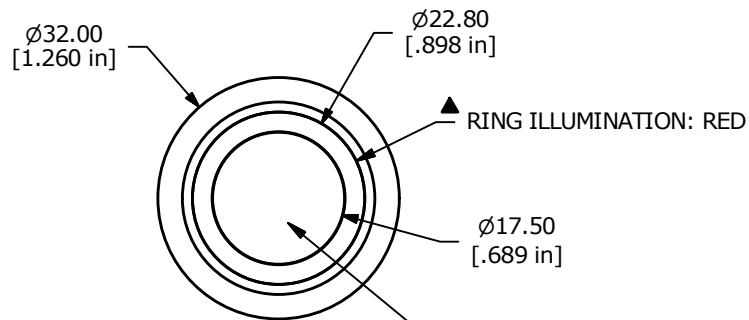
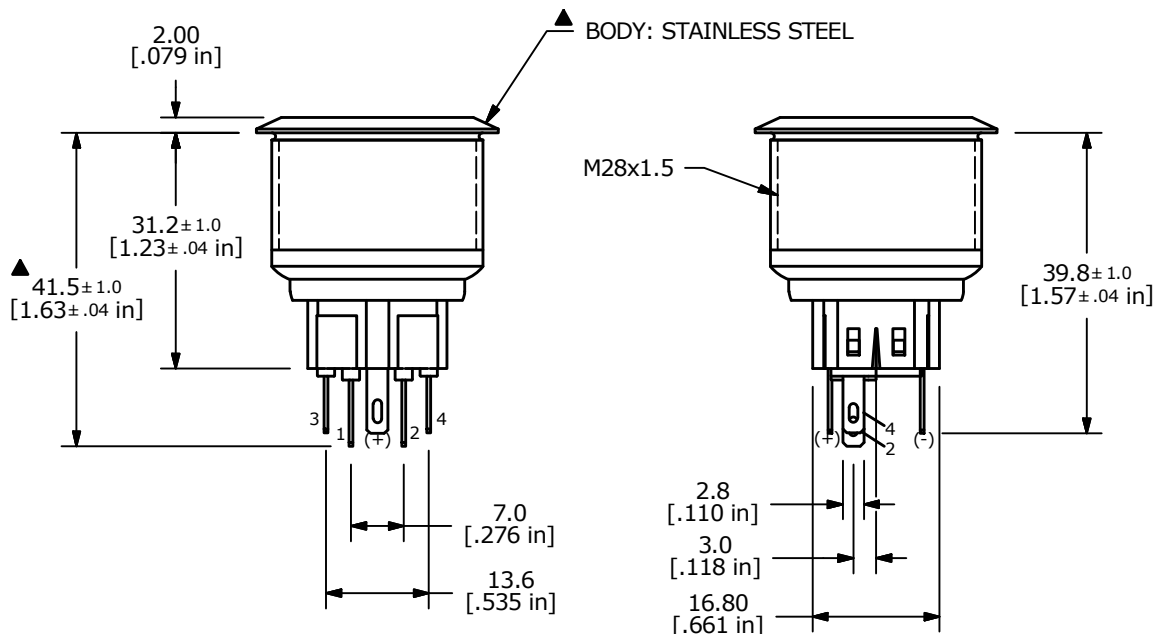
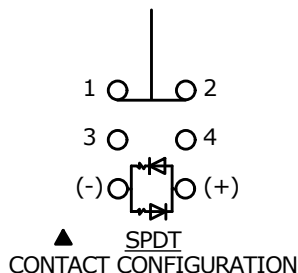


PANEL CUTOUT
MAX. PANEL THICKNESS 10mm



SWITCH FUNCTION	
POS. 1	POS. 2
1-2 ON	1-2 OFF
3-4 OFF	3-4 ON



NOTE:

1. ALL DIMENSIONS IN MM [INCH]
2. GENERAL TOLERANCE: X.X = ± 0.4
X.XX = ± 0.25
3. TERMINAL NOS. FOR REF. ONLY
- ▲ 4. RATING: 2A @ 48VDC
5. CONTACT RESISTANCE: 50mΩ MAX. @ 1A 12VDC
6. INSULATION RESISTANCE: 1,000MΩ @ 500VDC
7. DIELECTRIC STRENGTH: 2,000VAC MIN. FOR 1 MINUTE
8. ELECTRICAL LIFE: 50,000 CYCLES
9. OPERATING TEMPERATURE: -20°C TO 70°C
10. INGRESS PROTECTION: IP65
11. ▲ DENOTES CRITICAL PARAMETER
12. 2002/95/EC (ROHS) COMPLIANT
- ▲ 13. ILLUMINATION COLOR: RED (FORWARD), RED (REVERSE)
- ▲ 14. ILLUMINATION VOLTAGE: 1.8V
- ▲ 15. SUPPLIED HARDWARE: O-RING AND HEX NUT



A	21919	RELEASE FOR PRODUCTION	7/17/15	MW
REV	PCR NO	DESCRIPTION	DATE	BY

TITLE PV9F2T0SS-311				
SCALE	DATE	DR	DWG	REV
1:1	7/17/2015	MW	52-PV9F2T0SS311	A

THE INFORMATION CONTAINED IN THIS DOCUMENT IS PROPRIETARY TO E-SWITCH AND IS NOT TO BE COPIED OR TRANSFERRED