

环保物料

TEL:0769-82001899

Technical Data

Material:

Pin(outer sleeve):Brass,machined CuZn38Pb2

Plating(outer sleeve):

Tin Plated:2μm/80μ"NI, 5μm/200μ"Sn

Gold Plated:2μm"/80μ"Ni, 0.8μ" gold

Plating(Contact ):2μm/80μ"NI, gold or Tin plated

Insulator:PPS UL94V-0

Clip(Contact 4 Flnger):Beryllium copper,heat teated

Mating pin∅:0.40mm/0.66mm

Electrical:

Current rating:3Amps/contact max.

Contact resistance:≤4mΩ/contact

Insulation resistance:≥1000MΩ at V=100V

Dlelectric Withstanding Voltage:1000V AV Min

Operaling voltage:60VAC/DC

Mechanical:

-Insertion:0.7N typ

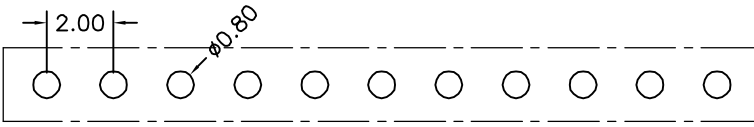
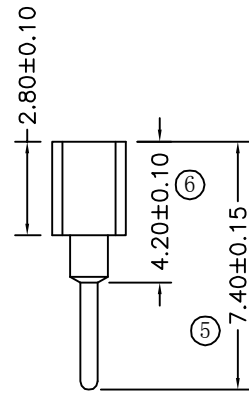
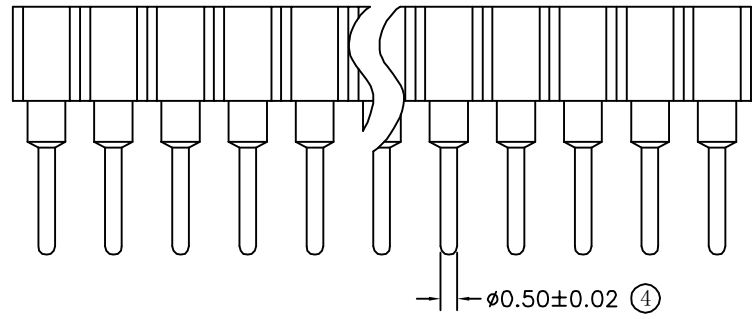
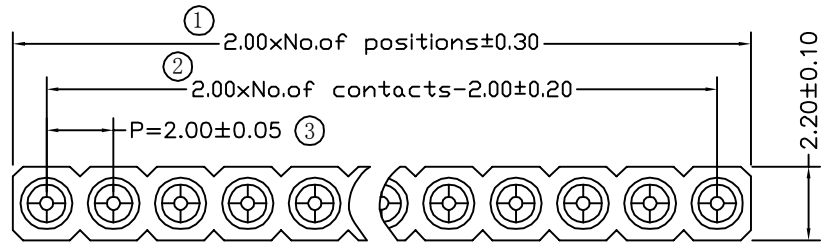
-Withdrawal:0.4N typ

Mechanical lige:min 500 cycle

Operaling temperature:-40° C to+105° C

Soldering temperature:+255° C

Critical Dimensions:⊛



P. C. B LAYOUT

				TOLERANCE UNLESS OTHERWISE		DRAWN	CK tan	<b>XFCN</b> 兴飞连接器有限公司 XFCN CONNECTORS CO.,LTD.	SHEET	1/1
				X. ±0.30	X° ±5°	CHKD			DATE	2020.04.12
				.X ±0.20	.X° ±2°	APPD			UNITS	mm
				.XX ±0.08	.XX° ±1°	VIEW	⊕		SCALE	1:1
AO	MODIFICATION	DRAW	DATE	.XXX ±0.03	.XXX° ±0.5°	PRODUCT NAME	2.00mm Machined Female Header	DWG NO.	009	
VER						PART. NO.	MF200V-11-xx-0740			