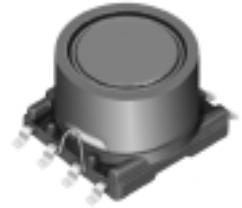


Type: CMD-8R

◆ **Product Description**

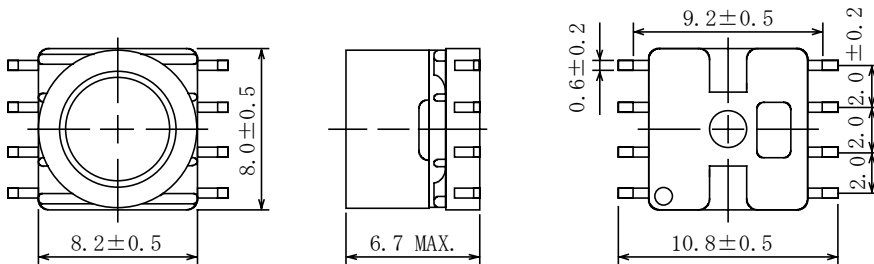
- 8.7×8.5mm Max.(L×W), 6.7mm Max. Height.
- Inductance range: 22 μ H~1.0mH
- Rated current range: 0.20A~1.40A
- 8 Terminal pins' type gives a flexible design as inductors or transformers.
- Custom design is available.



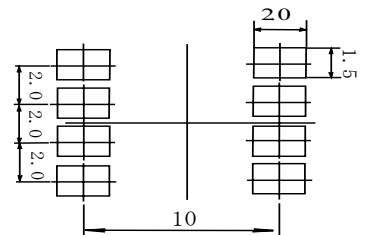
◆ **Feature**

- Magnetically shielded construction.
- Max. Operating frequency 500kHz, Max Operating Power1.9W (500kHz).
- Ideally used in DSC/DVC,PDA, Power supply module etc as DC-DC Converter transformers, can also be used as power chokes.
- RoHS Compliance

◆ **Dimensions(mm)**



◆ **Land Pattern (mm)**

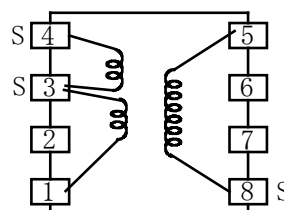


◆ **Specification (for transformers)**

Sample No.	Inductance (8-5) 1kHz/1V	Hi-pot (1,3,4)-(5,8)
6308-T074	8.5mH±15% Within	DC 600V/2 Sec.

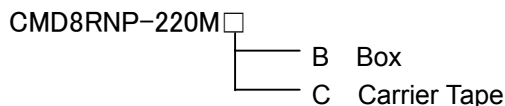
※ **Schematics (Bottom)**

“S” is winding start.



Type: CMD-8R
◆ Specification (for inductors)

Part Name ※	Stamp	Inductance [Within] ※1	D.C.R.(Ω) [Max.] (at 20°C)	Rate Current (A)※2	S.R.F. (MHz) [Min.]
CMD8RNP-220M□	220M	22 μH ± 20%	0.11	1.4	17
CMD8RNP-270M□	270M	27 μH ± 20%	0.12	1.3	14
CMD8RNP-330M□	330M	33 μH ± 20%	0.13	1.2	13
CMD8RNP-390M□	390M	39 μH ± 20%	0.16	1.1	12
CMD8RNP-470M□	470M	47 μH ± 20%	0.17	1.0	11
CMD8RNP-560M□	560M	56 μH ± 20%	0.23	0.93	8.9
CMD8RNP-680M□	680M	68 μH ± 20%	0.25	0.85	7.8
CMD8RNP-820M□	820M	82 μH ± 20%	0.27	0.78	7.4
CMD8RNP-101M□	101M	100 μH ± 20%	0.33	0.69	6.2
CMD8RNP-121M□	121M	120 μH ± 20%	0.45	0.63	5.8
CMD8RNP-151M□	151M	150 μH ± 20%	0.62	0.55	5.4
CMD8RNP-181M□	181M	180 μH ± 20%	0.68	0.50	4.7
CMD8RNP-221M□	221M	220 μH ± 20%	0.78	0.45	4.6
CMD8RNP-271M□	271M	270 μH ± 20%	1.00	0.41	3.6
CMD8RNP-331M□	331M	330 μH ± 20%	1.14	0.37	3.4
CMD8RNP-391M□	391M	390 μH ± 20%	1.23	0.35	3.2
CMD8RNP-471M□	471M	470 μH ± 20%	1.81	0.31	2.9
CMD8RNP-561M□	561M	560 μH ± 20%	1.99	0.28	2.8
CMD8RNP-681M□	681M	680 μH ± 20%	2.2	0.25	2.6
CMD8RNP-821M□	821M	820 μH ± 20%	3.24	0.23	2.1
CMD8RNP-102M□	102M	1.0mH ± 20%	3.65	0.20	1.9

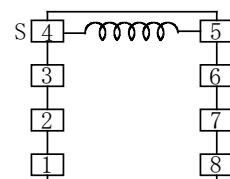
※ Description of part name


※1: Measuring Frequency

22 μH ~ 82 μH at 2.52MHz
 100 μH ~ 1.0mH at 1kHz

※ Schematics (Bottom)

“S” is winding start.



※2. Rated current: The D.C. current at which the inductance decreases to 90% of its initial value or when Δt=40°C, whichever is lower(Ta=20°C).