

PLEASE CHECK WWW.MOLEX.COM FOR LATEST PART INFORMATION

Part Number:

0495181190

Status:

Active

Description:

3.96mm (.156") Pitch Wire-to-Board Retainer, 11 Circuits, UL94V-2, Natural

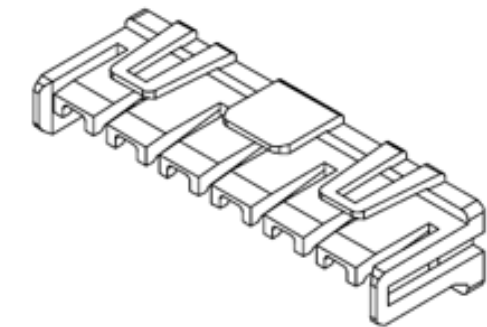


image - Reference only

Series

Documents:

- [Drawing \(PDF\)](#)
- [Product Specification PS-49517-001 \(PDF\)](#)
- [RoHS Certificate of Compliance \(PDF\)](#)

General

Product Family	Accessories
Series	49518
Component Type	Retainer
Product Name	TPA™ - Term Pos Assurance

Physical

Breakaway	No
Circuits (Loaded)	11
Circuits (maximum)	11
Color - Resin	Natural
Lock to Mating Part	Yes
Material - Resin	Nylon
Number of Rows	1
Packaging Type	Bag
Temperature Range - Operating	-40°C to +105°C

Electrical

Current - Maximum per Contact	7A
-------------------------------	----

Material Info

Reference - Drawing Numbers

Packaging Specification	PK-49518-001
Product Specification	PS-49517-001
Sales Drawing	SD-49518-001

EU RoHS

ELV and RoHS
Compliant
REACH SVHC
Contains SVHC: No
Halogen-Free
Status

China RoHS



Need more information on product
environmental compliance?

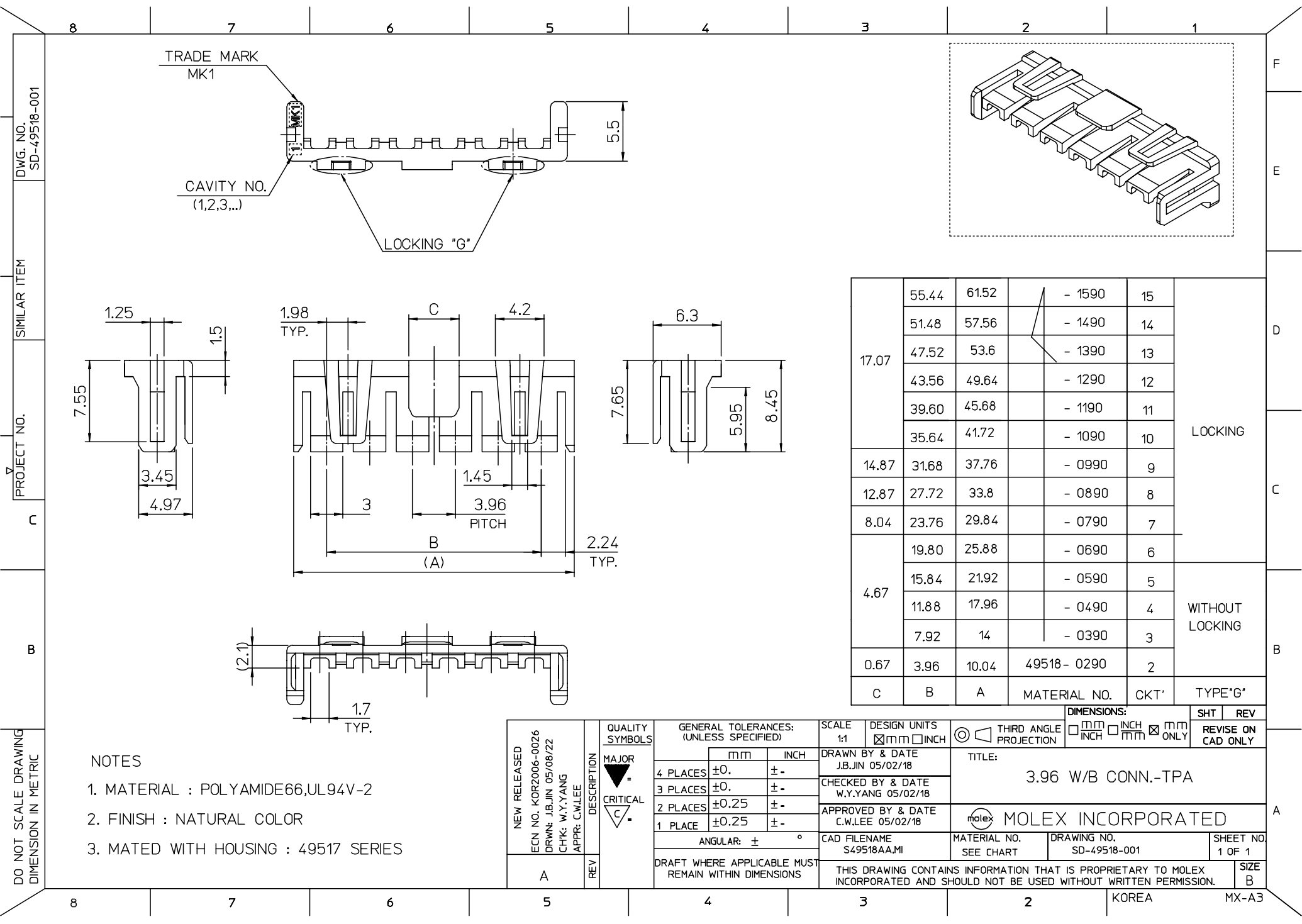
Email productcompliance@molex.com
For a multiple part number RoHS Certificate of
Compliance, [click here](#)

Please visit the [Contact Us](#) section for any
non-product compliance questions.

Search Parts in this Series
49518Series

Use With
49517 Wire-to-Board Female Housing

PLEASE CHECK WWW.MOLEX.COM FOR LATEST PART INFORMATION



DO NOT SCALE DRAWING
DIMENSION IN METRIC

NOTES

- 1. MATERIAL : POLYAMIDE66,UL94V-2
- 2. FINISH : NATURAL COLOR
- 3. MATED WITH HOUSING : 49517 SERIES

NEW RELEASED
ECN NO. KOR2006-0026
DRWN: J.B.JIN 05/08/22
CHK: W.Y.YANG
APPR: C.W.LEE

DESCRIPTION
REV

QUALITY SYMBOLS
MAJOR
CRITICAL

GENERAL TOLERANCES:
(UNLESS SPECIFIED)

SCALE
1:1

DESIGN UNITS
mm INCH

THIRD ANGLE
PROJECTION

DRAWN BY & DATE
J.B.JIN 05/02/18

CHECKED BY & DATE
W.Y.YANG 05/02/18

APPROVED BY & DATE
C.W.LEE 05/02/18

CAD FILENAME
S49518AA.MI

MATERIAL NO.
SEE CHART

DRAWING NO.
SD-49518-001

SHEET NO.
1 OF 1

SIZE
B

KOREA

MX-A3

17.07	55.44	61.52	- 1590	15	LOCKING
	51.48	57.56	- 1490	14	
	47.52	53.6	- 1390	13	
	43.56	49.64	- 1290	12	
	39.60	45.68	- 1190	11	
	35.64	41.72	- 1090	10	
14.87	31.68	37.76	- 0990	9	WITHOUT LOCKING
12.87	27.72	33.8	- 0890	8	
8.04	23.76	29.84	- 0790	7	
4.67	19.80	25.88	- 0690	6	
	15.84	21.92	- 0590	5	WITHOUT LOCKING
	11.88	17.96	- 0490	4	
	7.92	14	- 0390	3	
0.67	3.96	10.04	49518- 0290	2	WITHOUT LOCKING
C	B	A	MATERIAL NO.	CKT'	

DIMENSIONS:
mm INCH mm ONLY

THIRD ANGLE
PROJECTION

TITLE:
3.96 W/B CONN.-TPA

MOLEX INCORPORATED

THIS DRAWING CONTAINS INFORMATION THAT IS PROPRIETARY TO MOLEX
INCORPORATED AND SHOULD NOT BE USED WITHOUT WRITTEN PERMISSION.

SIZE
B