

Features

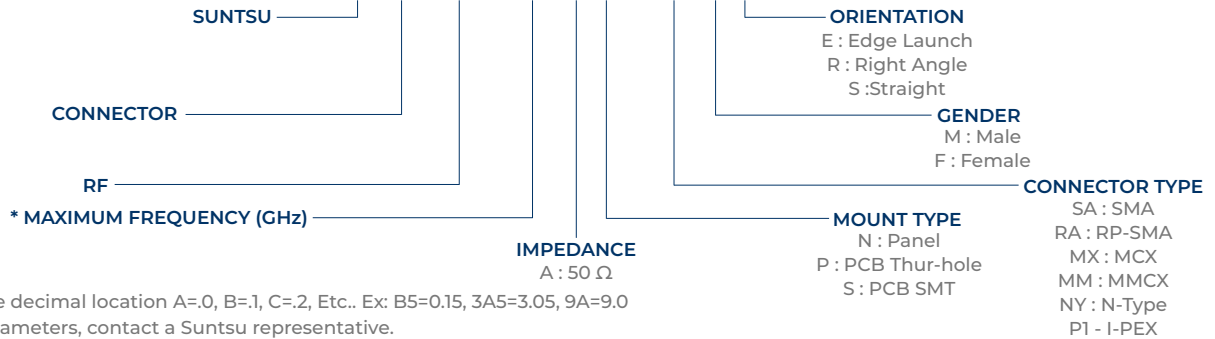
- Popular Coax RF Connectors For Wireless Applications
- Frequency Range Up To 6 GHz
- 50Ω Impedance
- Variety Of On-Board And Panel Mount Types

Applications

- Radio Communication
- Wi-Fi And Cellular Antennas
- Telecommunications And Microwave
- Smart Grid And Automated Metering
- Machine To Machine Communications

Part Numbering Guide

S CN RF - 6A A P - SA F S

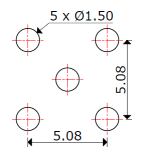
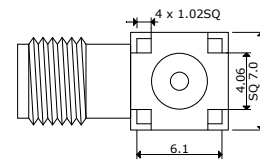
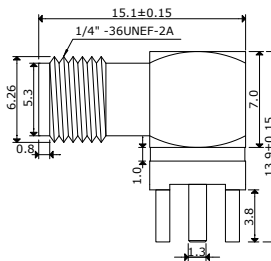
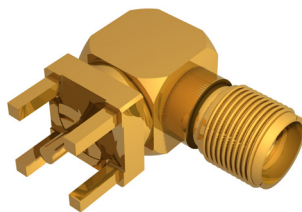


* Where letters denote decimal location A=.0, B=.1, C=.2, Etc.. Ex: B5=0.15, 3A5=3.05, 9A=9.0
To customize your parameters, contact a Suntsu representative.

ELECTRICAL PARAMETERS (At 25°C)	Units	SMA	RP-SMA	MCX	MMCX	N-Type	I-PEX
Impedance	Ω	50					
Frequency Range	GHz	0 - 6					
Voltage Standing Wave Ratio (VSWR)	MAX.	1.5		1.7	1.5	1.5	1.4
Working Voltage	Vrms Max.	335		335	170	1000	200
Dielectric Withstanding Voltage	Vrms MIN.	1000		1000	500	2500	200
Operating Temperature	°C	-55 to +85					
Storage Temperature	°C	-60 to +165					
Center Contact Resistance	mΩ Max.	6		6	6	6	20
Outer Contact Resistance	mΩ Max.	2		2.5	2.5	2	10
Insulation Resistance	mΩ Min.	1000		1000	1000	5000	500

CONNECTOR DIMENSIONS (All dimensions are in millimeters (mm) unless otherwise noted. Drawings are not to scale.)

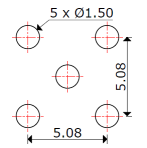
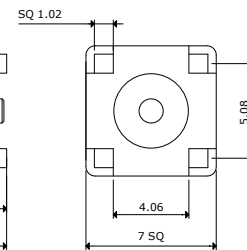
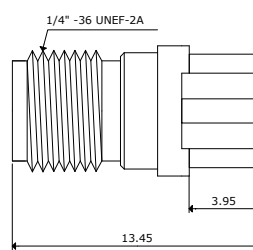
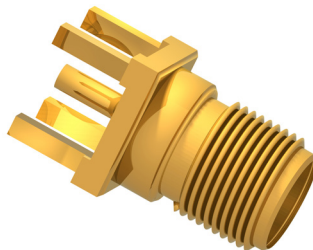
SMA PCB Mount Female Right Angle Connector
Part No. SCNRF-6AAP-SAFR



Recommended Mounting Layout

COMPONENT	MATERIAL	FINISH
Body	Brass	Gold
Center Contact	Brass	Gold
Dielectric	Teflon	-

SMA PCB Mount Female Straight Connector
Part No. SCNRF-6AAP-SAFS



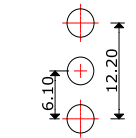
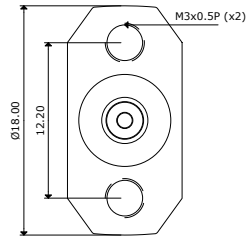
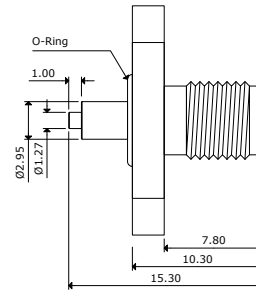
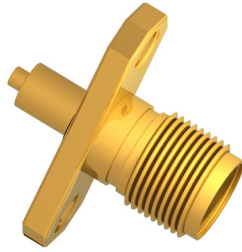
Recommended Mounting Layout

COMPONENT	MATERIAL	FINISH
Body	Brass	Gold
Center Contact	Brass	Gold
Dielectric	Teflon	-

CONNECTOR DIMENSIONS (All dimensions are in millimeters (mm) unless otherwise noted. Drawings are not to scale.)

SMA Panel Mount Female Straight Connector

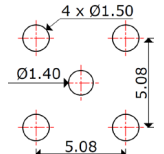
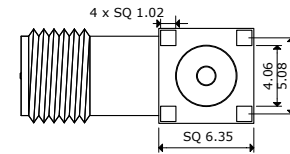
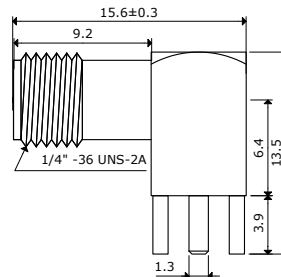
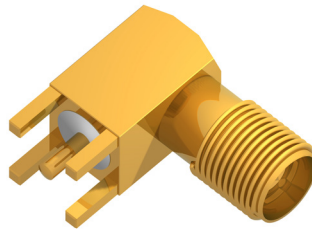
Part No. SCNRF-6AAN-SAFS


**Recommended
Mounting
Layout**

COMPONENT	MATERIAL	FINISH
Body	Brass	Gold
Center Contact	Beryllium Copper	Gold
Dielectric	Teflon	-

RP-SMA PCB Mount Female Right Angle Connector

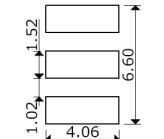
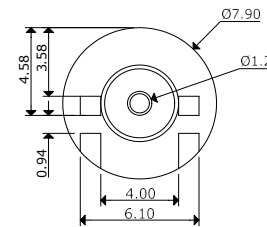
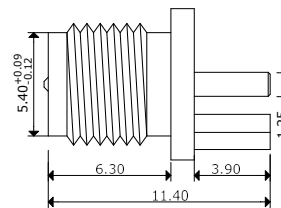
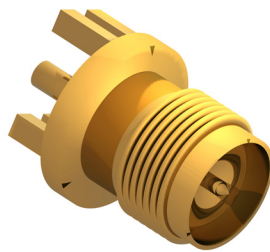
Part No. SCNRF-6AAP-RAFR


**Recommended
Mounting
Layout**

COMPONENT	MATERIAL	FINISH
Body	Brass	Gold
Center Contact	Brass	Gold
Dielectric	Teflon	-

RP-SMA PCB Edge Launch Female Connector

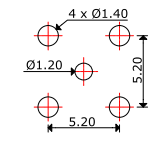
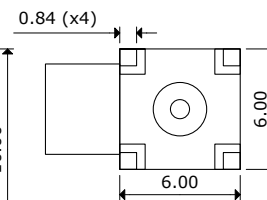
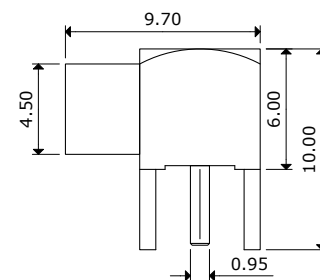
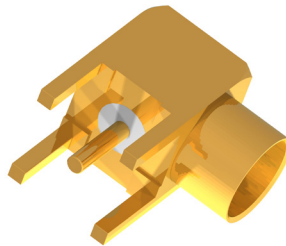
Part No. SCNRF-6AAS-RAFE


**Recommended
Mounting
Layout**

COMPONENT	MATERIAL	FINISH
Body	Brass	Gold
Center Contact	Brass	Gold
Dielectric	Teflon	-

MCX PCB Mount Female Right Angle Connector

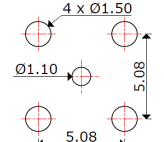
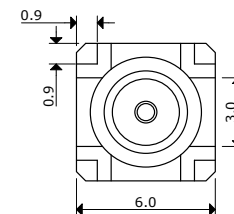
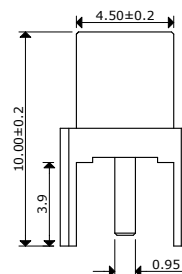
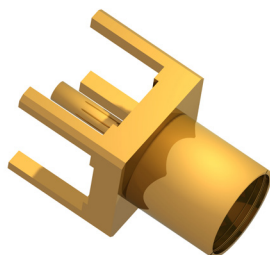
Part No. SCNRF-6AAP-MXFR


**Recommended
Mounting
Layout**

COMPONENT	MATERIAL	FINISH
Body	Brass	Gold
Center Contact	Phosphor Bronze	Gold
Dielectric	Teflon	-

MCX PCB Mount Female Straight Connector

Part No. SCNRF-6AAP-MXFS

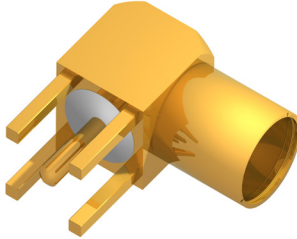

**Recommended
Mounting
Layout**

COMPONENT	MATERIAL	FINISH
Body	Brass	Gold
Center Contact	Beryllium Copper	Gold
Dielectric	Teflon	-

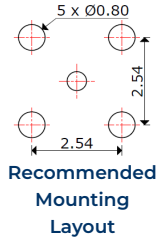
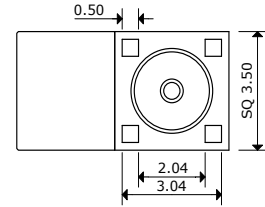
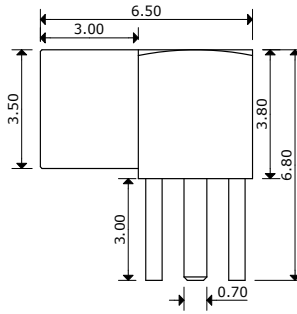
CONNECTOR DIMENSIONS (All dimensions are in millimeters (mm) unless otherwise noted. Drawings are not to scale.)

MMCX PCB Mount Female Right Angle Connector

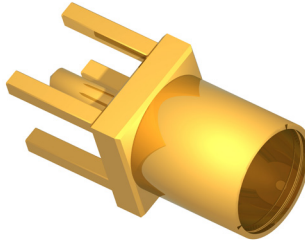
Part No. SCNRF-6AAP-MMFR



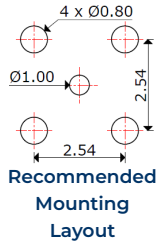
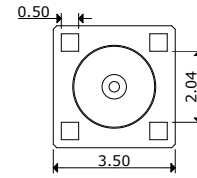
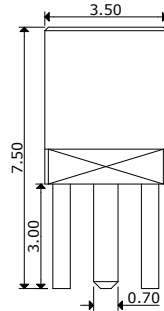
COMPONENT	MATERIAL	FINISH
Body	Brass	Gold
Center Contact	Beryllium Copper	Gold
Dielectric	Teflon	-


MMCX PCB Mount Female Straight Connector

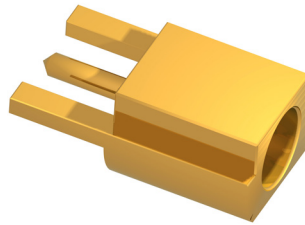
Part No. SCNRF-6AAP-MMFS



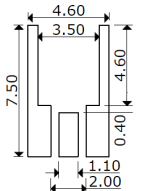
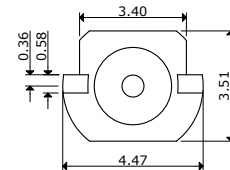
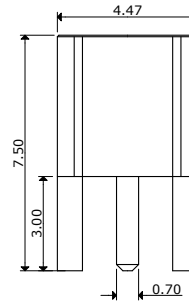
COMPONENT	MATERIAL	FINISH
Body	Brass	Gold
Center Contact	Beryllium Copper	Gold
Dielectric	Teflon	-


MMCX Edge Mount Female Connector

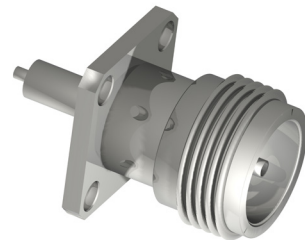
Part No. SCNRF-6AAS-MMFE



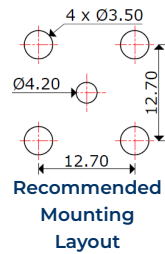
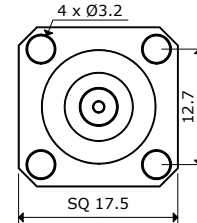
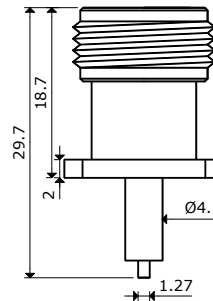
COMPONENT	MATERIAL	FINISH
Body	Brass	Gold
Center Contact	Beryllium Copper	Gold
Dielectric	Teflon	-


N-Type Panel Mount Female Straight Connector

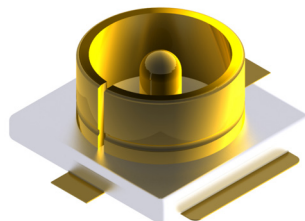
Part No. SCNRF-6AAN-NYFS



COMPONENT	MATERIAL	FINISH
Body	Brass	Gold
Center Contact	Phosphor Bronze	Gold
Dielectric	Teflon	-


IPEX Panel Mount Female Straight Connector

Part No. SCNRF-6AAN-PIFS



COMPONENT	MATERIAL	FINISH
Body	Plastic (LPC)	Gold
Center Contact	Copper Alloy	Gold

