

**Data Sheet**
 telephone  
 949 252 0522


BACK

Product Category: Filters

Series Number	Package	Description	Last Modified
772 ~ 773	Ceramic Series	For TV / VCR	Jan. 01 2008

**Filter FEATURES**

- Wide bandwidth Ceramic Filter
- Low insertion loss
- Low spurious suppression characteristics
- TV SIF stage use
- RoHS Compliant



## OPERATING CONDITIONS / ELECTRICAL CHARACTERISTICS / PART NUMBER GUIDE

PART NO.	Type	Fig.	Nominal Frequency	3 dB Bandwidth	20 dB Bandwidth	Insertion Loss	Spurious Attenuation	In/Output Impedance
			(fn)(MHz)	(KHz) min.	(KHz) max.	(dB) max.	(dB) min.	(Ohm)
<b>772-0045</b>	LTS/CB	2	4.500	fn ±60	600	6.0	30 (0 ~ 4.5 MHz)	1000
<b>772-0055</b>	LTS/CB	2	5.500	fn ±60	600	6.0	30 (0 ~ 5.5 MHz)	600
<b>772-0060</b>	LTS/CB	2	6.000	fn ±60	600	6.0	30 (0 ~ 6.0 MHz)	470
<b>772-0065</b>	LTS/CB	2	6.500	fn ±70	650	6.0	30 (0 ~ 6.5 MHz)	470
<b>773-0045</b>	LTS/DB	2	4.500	fn ±70	750	6.0	30 (0 ~ 4.5 MHz)	1000
<b>773-0055</b>	LTS/DB	2	5.500	fn ±80	750	6.0	30 (0 ~ 5.5 MHz)	600
<b>773-0060</b>	LTS/DB	2	6.000	fn ±80	750	6.0	30 (0 ~ 6.0 MHz)	470
<b>773-0065</b>	LTS/DB	2	6.500	fn ±80	800	6.0	30 (0 ~ 6.5 MHz)	470

**NOTE:** Deviations on all parameters available. Please consult Oscilent for details.

**DEFINITIONS:** Click on the characteristic names above, for definitions of the particular characteristic.

**OTHER:** 771 Series have been discontinued on Jan 01 2008

**PACKAGE DIMENSIONS (mm)**

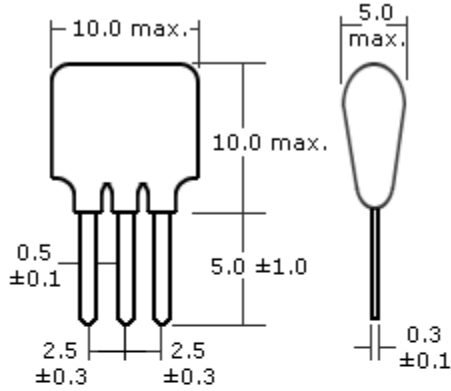


Figure 1

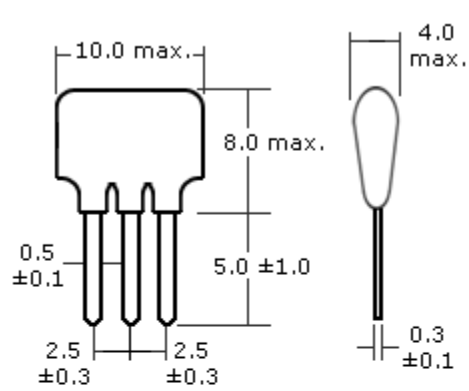
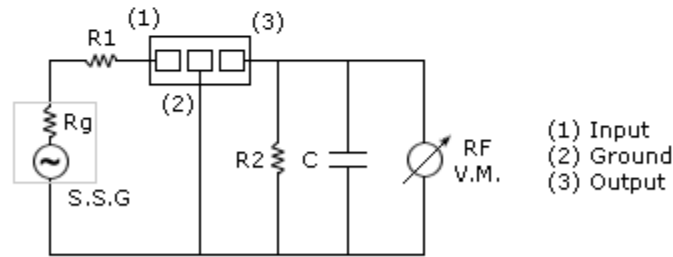


Figure 2

**Test Circuit**



$R_g + R_1 = R_2 = \text{Input/Output Impedance}$   
 $C = 10\text{pF}$   
 (Including stray capacitance and input capacitance of RF voltmeter)

**Oscilent Corporation** - CALL **949.252.0522**  
 18195 East McDermott Street . Building D . Irvine . CA 92614 . USA  
 Fax: 949.252.0599 . E-Mail: Sales@Oscilent.com

**Series No.:** 772 to 773