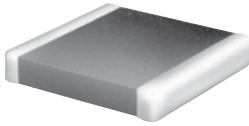


Surface Mount Multilayer Chip Beads, 0402 - 1812 Industry Sizes



- Operating Temperature Range
Standard: -25°C to +85°C
Optional Extended Temperature Range: -40°C to +125°C
- Resistance to Solder Heat: 260°C for 10 sec.

Specifications / Packaging
0402, 0603, 0805, 1206, 1210, 1806 & 1812 Electrical Characteristics - Standard Speed

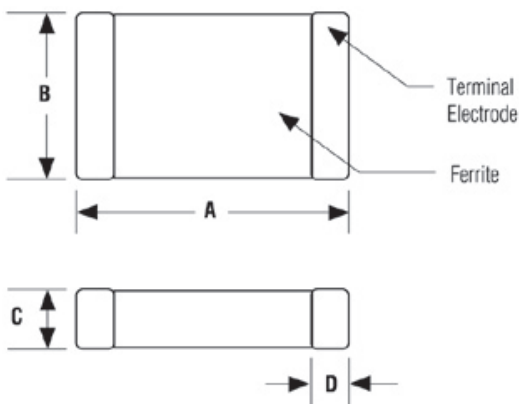
Part Number	Impedance Z Ω $\pm 25\%$ @ 100 MHz	DCR Ω Max	Rated Current mA Max.	7" Reel Qty (Units)	Part Number	Impedance Z Ω $\pm 25\%$ @ 100 MHz	DCR Ω Max	Rated Current mA Max.	7" Reel Qty (Units)
BMB0402A-600	60	0.35	300	10K	BMB0805A-301	300	0.20	500	4K
BMB0402A-121	120	0.40	300	10K	BMB0805A-401	400	0.30	500	4K
BMB0402A-301	300	0.80	200	10K	BMB0805A-601	600	0.30	500	4K
BMB0402A-601	600	1.00	200	10K	BMB0805A-102	1000	0.35	300	4K
BMB0603A-100	10	0.05	600	4K	BMB0805A-152	1500	0.40	200	4K
BMB0603A-300	30	0.08	600	4K	BMB0805A-202	2000	0.50	200	4K
BMB0603A-400	40	0.10	600	4K	BMB0805A-222	2200	0.50	200	4K
BMB0603A-600	60	0.10	600	4K	BMB1206A-260	26	0.05	600	3K
BMB0603A-680	68	0.10	600	4K	BMB1206A-310	31	0.05	600	3K
BMB0603A-800	80	0.10	400	4K	BMB1206A-500	50	0.08	600	3K
BMB0603A-121	120	0.15	400	4K	BMB1206A-600	60	0.08	600	3K
BMB0603A-181	180	0.30	300	4K	BMB1206A-700	70	0.10	600	3K
BMB0603A-221	220	0.30	300	4K	BMB1206A-900	90	0.15	500	3K
BMB0603A-301	300	0.35	300	4K	BMB1206A-121	120	0.15	500	3K
BMB0603A-451	450	0.40	300	4K	BMB1206A-151	150	0.15	500	3K
BMB0603A-601	600	0.45	200	4K	BMB1206A-201	200	0.20	500	3K
BMB0603A-751	750	0.60	100	4K	BMB1206A-501	500	0.25	500	3K
BMB0603A-102	1000	0.60	100	4K	BMB1206A-601	600	0.30	500	3K
BMB0805A-070	7	0.05	600	4K	BMB1206A-801	800	0.30	200	3K
BMB0805A-110	11	0.05	600	4K	BMB1206A-102	1000	0.40	200	3K
BMB0805A-170	17	0.05	600	4K	BMB1206A-122	1200	0.40	200	3K
BMB0805A-260	26	0.05	600	4K	BMB1206A-152	1500 @ 50MHz	0.50	200	3K
BMB0805A-320	32	0.05	600	4K	BMB1206A-202	2000 @ 30MHz	0.50	200	3K
BMB0805A-400	40	0.05	600	4K	BMB1210A-310	31	0.30	400	2K
BMB0805A-600	60	0.15	600	4K	BMB1210A-600	60	0.30	400	2K
BMB0805A-800	80	0.15	600	4K	BMB1210A-900	90	0.30	400	2K
BMB0805A-900	90	0.15	600	4K	BMB1806A-800	80	0.10	400	2K
BMB0805A-121	120	0.15	500	4K	BMB1806A-101	100	0.20	300	2K
BMB0805A-151	150	0.15	500	4K	BMB1806A-151	150	0.30	200	2K
BMB0805A-181	180	0.20	500	4K	BMB1812A-700	70	0.40	200	1K
BMB0805A-221	220	0.20	500	4K	BMB1812A-121	120	0.40	200	1K

Specifications / Packaging

0603, 0805 & 1206 Electrical Characteristics - High Speed

Part Number	Impedance Z Ω $\pm 25\%$ @ 100 MHz	DCR Ω Max	Rated Current mA Max.	7" Reel Qty (Units)	Part Number	Impedance Z Ω $\pm 25\%$ @ 100 MHz	DCR Ω Max	Rated Current mA Max.	7" Reel Qty (Units)
BMB0603B-121	120	0.45	200	4K	BMB0805B-601	600	0.35	200	4K
BMB0603B-301	300	0.45	200	4K	BMB0805B-102	1000	0.45	200	4K
BMB0603B-601	600	0.50	200	4K	BMB1206B-121	120	0.20	200	3K
BMB0805B-121	120	0.25	200	4K	BMB1206B-301	300	0.30	200	3K
BMB0805B-301	300	0.25	200	4K	BMB1206B-601	600	0.45	200	3K

Outline Dimensions (Inch/mm)



Part #	A Dim.	B Dim.	C Dim.	D Dim.
BMB 0402 (1005)	.04 \pm .004 1.0 \pm .10	.02 \pm .004 .50 \pm .10	.02 \pm .004 .50 \pm .10	.01 \pm .004 .25 \pm .10
BMB 0603 (1608)	.063 \pm .006 1.6 \pm 0.15	.031 \pm .006 .80 \pm 0.15	.031 \pm .006 .80 \pm 0.15	.012 \pm .008 .30 \pm .20
BMB 0805 (2012)	.079 \pm .008 2.0 \pm 0.2	.049 \pm .008 1.25 \pm 0.2	.035 \pm .008 .90 \pm 0.2	.020 \pm .012 .50 \pm .30
BMB 1206 (3216)	.126 \pm .008 3.2 \pm 0.2	.063 \pm .008 1.6 \pm 0.2	.043 \pm .008 1.1 \pm 0.2	.020 \pm .012 .50 \pm .30
BMB 1210 (3225)	.126 \pm .008 3.2 \pm 0.2	.098 \pm .008 2.5 \pm 0.2	.051 \pm .008 1.3 \pm 0.2	.020 \pm .012 .50 \pm .30
BMB 1806 (4516)	.18 \pm .01 4.5 \pm 0.25	.063 \pm .008 1.6 \pm 0.2	.063 \pm .008 1.6 \pm 0.2	.024 \pm .016 .60 \pm .40
BMB 1812 (4532)	.18 \pm .01 4.5 \pm 0.25	.126 \pm .01 3.2 \pm 0.25	.06 \pm .01 1.5 \pm 0.25	.024 \pm .016 .60 \pm .40

Ordering Information

