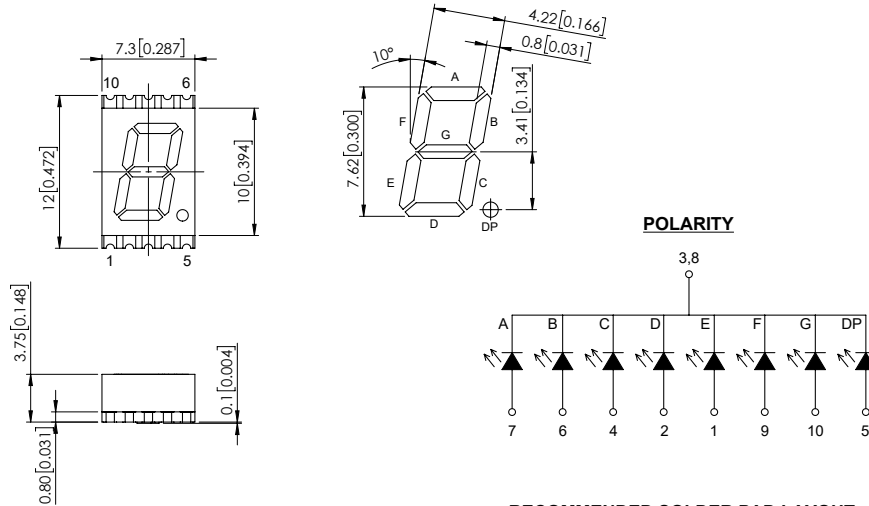
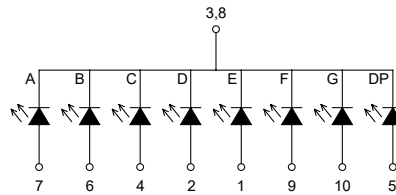


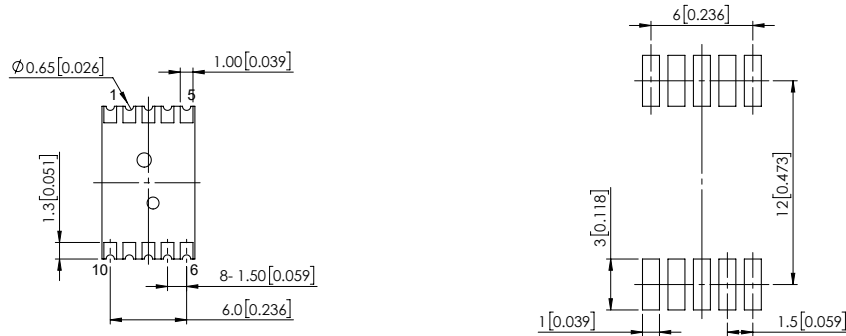
| | | | |
|--------------------|--|------------|-------------|
| PART NUMBER | LDS-SMC3002RISUGTR | REV | B |
| REV | E.C.N. NUMBER AND REVISION COMMENTS | | DATE |
| A | E.C.N. #11446. | | 09.27.07 |
| B | ECN-Lumex201700063 | | 08.31.17 |



POLARITY



RECOMMENDED SOLDER PAD LAYOUT



ELECTRO-OPTICAL CHARACTERISTIC TA=25°C

| PARAMETER | MIN | TYP | MAX | UNITS | TEST COND |
|--------------------|----------------------|------|------|-------|-----------|
| PEAK WAVELENGTH | - | 574 | - | nm | If=10mA |
| FORWARD VOLTAGE | - | 2.0 | 2.45 | Vf | If=10mA |
| REVERSE VOLTAGE | - | - | 5 | Vr | Ir=10uA |
| LUMINOUS INTENSITY | - | 3100 | - | mcd | If=10mA |
| EMITTED COLOR | GREEN | | | | |
| FACE COLOR | GRAY | | | | |
| SEGMENT COLOR | MILKY WHITE DIFFUSED | | | | |

ABSOLUTE MAXIMUM RATINGS TA=25°C

| PARAMETER | MAX | UNITS |
|-----------------------|------------|-------|
| PEAK FORWARD CURRENT* | 150 | mA |
| FORWARD CURRENT | 30 | mA |
| POWER DISSIPATION | 75 | mW |
| STORAGE TEMPERATURE | -40 TO +85 | °C |
| OPERATING TEMPERATURE | -40 TO +85 | °C |

*t<10us

NOTE:
1. RoHS COMPLIANT.

MOISTURE SENSITIVE DEVICE
PER JEDEC LEVEL 2a STANDARDS

STATIC DEVICE FOLLOW PROPER
E.S.D. HANDLING PROCEDURES
WHEN WORKING WITH THIS PART

*UNLESS OTHERWISE SPECIFIED TOLERANCES PER DECIMAL PRECISION ARE: X=±1 (±0.039), X.X=±0.5 (±0.020), X.XX=±0.25 (±0.010), X.XXX=±0.127 (±0.005). LEAD SIZE=±0.05 (±0.002), LEAD LENGTH=±0.75 (±0.030), MIN=^{+0.00}DECIMAL PRECISION, MAX=^{-0.00}DECIMAL PRECISION

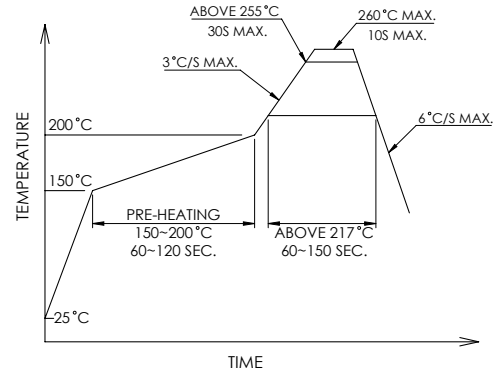


425 N. GARY AVE.
CAROL STREAM, IL 60188
PHONE : 800-278-5666
FAX : 830-315-2150
WEB : WWW.LUMEX.COM

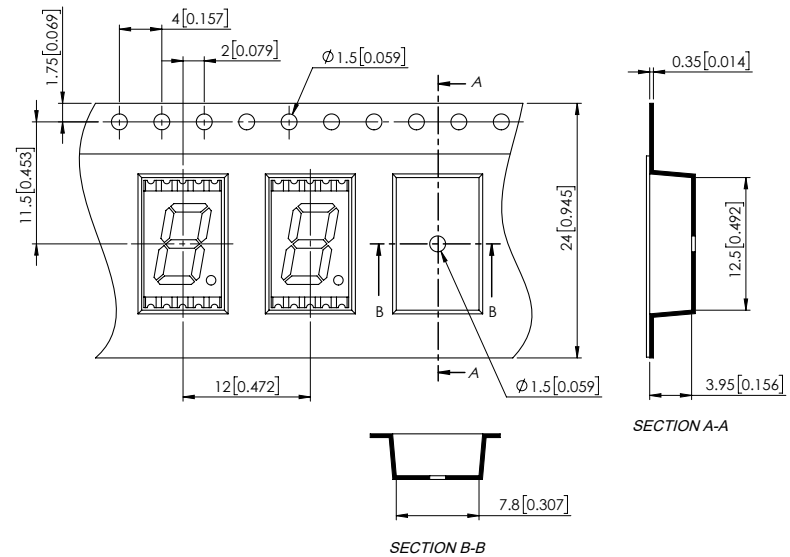
12(L)*7.3(W)*3.75(H)mm, 0.30" SMT 7 SEGMENT DISPLAY, COMMON CATHODE, 574nm AlInGaP GREEN LEDS, GRAY FACE WITH SEGMENTS, TAPE & REEL.
THE SPECIFICATIONS MAY CHANGE AT ANY TIME WITHOUT NOTICE DUE TO NEW MATERIALS OR PRODUCT IMPROVEMENT.
CONFIDENTIAL INFORMATION
THE INFORMATION CONTAINED IN THIS DOCUMENT IS THE PROPERTY OF LUMEX INC. EXCEPT AS SPECIFICALLY AUTHORIZED IN WRITING BY LUMEX INC., THE HOLDER OF THIS DOCUMENT SHALL KEEP ALL INFORMATION CONTAINED HEREIN CONFIDENTIAL AND SHALL PROTECT SAME IN WHOLE OR IN PART FROM DISCLOSURE AND DISSEMINATION TO ALL THIRD PARTIES.

DATE : 2017.08.31 DRAWN BY : C.C.
PAGE : 1 OF 2 CHKD BY : G.Y.
SCALE : NTF APRVD BY : E.C.
UNIT : mm [INCH]

PROFILE



CARRIER TAPE DIMENSION



*UNLESS OTHERWISE SPECIFIED TOLERANCES PER DECIMAL PRECISION ARE: X=±1 (±0.039), X.X=±0.5 (±0.020), X.XX=±0.25 (±0.010), X.XXX=±0.127 (±0.005), LEAD SIZE=±0.05 (±0.002), LEAD LENGTH=±0.75 (±0.030), MIN=^{+0.00}DECIMAL PRECISION -0.00, MAX.=^{+0.00}DECIMAL PRECISION



425 N. GARY AVE.
CAROL STREAM, IL 60188
PHONE : 800-278-5666
FAX : 830-315-2150
WEB : WWW.LUMEX.COM

12(L)*7.3(W)*3.75(H)mm, 0.30" SMT 7 SEGMENT DISPLAY, COMMON CATHODE, 574nm AllnGaP GREEN LEDS, GRAY FACE WITH SEGMENTS, TAPE & REEL.

"THE SPECIFICATIONS MAY CHANGE AT ANY TIME WITHOUT NOTICE DUE TO NEW MATERIALS OR PRODUCT IMPROVEMENT."

CONFIDENTIAL INFORMATION

THE INFORMATION CONTAINED IN THIS DOCUMENT IS THE PROPERTY OF LUMEX INC. EXCEPT AS SPECIFICALLY AUTHORIZED IN WRITING BY LUMEX INC., THE HOLDER OF THIS DOCUMENT SHALL KEEP ALL INFORMATION CONTAINED HEREIN CONFIDENTIAL AND SHALL PROTECT SAME IN WHOLE OR IN PART FROM DISCLOSURE AND DISSEMINATION TO ALL THIRD PARTIES.

DATE : 2017.08.31

DRAWN BY : C.C.

PAGE : 2 OF 2

CHKD BY : G.Y.

SCALE : NTF

APRVD BY : E.C.

UNIT : mm [INCH]

