

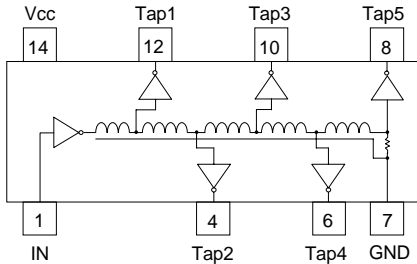
AIDM Series FAST / TTL Buffered 5-Tap Delay Modules

- Low Profile 14-Pin Package
Two Surface Mount Versions
- FAST/TTL Logic Buffered
- 5 Equal Delay Taps
- Operating Temperature
Range 0°C to +70°C
- 8-Pin Versions: FAMDM Series
SIP Versions: FSIDM Series
- Low Voltage CMOS Versions
refer to LVMDM / LVIDM Series

Electrical Specifications at 25°C

FAST/TTL 14-Pin DIP P/N	Tap Delay Tolerances +/- 5% or 2ns (+/- 1ns <13ns)					Tap-to-Tap (ns)
	Tap 1	Tap 2	Tap 3	Tap 4	Total - Tap 5	
AIDM-7	3.0	4.0	5.0	6.0	7 ± 1.0	** 1 ± 0.5
AIDM-9	3.0	4.5	6.0	7.5	9 ± 1.0	** 1.5 ± 0.5
AIDM-11	3.0	5.0	7.0	9.0	11 ± 1.0	** 2 ± 0.7
AIDM-13	3.0	5.5	8.0	10.5	13 ± 1.5	** 2.5 ± 1.0
AIDM-15	3.0	6.0	9.0	12.0	15 ± 1.5	3 ± 1.0
AIDM-20	4.0	8.0	12.0	16.0	20 ± 2.0	4 ± 1.5
AIDM-25	5.0	10.0	15.0	20.0	25 ± 2.0	5 ± 2.0
AIDM-30	6.0	12.0	18.0	24.0	30 ± 2.0	6 ± 2.0
AIDM-35	7.0	14.0	21.0	28.0	35 ± 2.0	7 ± 2.0
AIDM-40	8.0	16.0	24.0	32.0	40 ± 2.0	8 ± 2.0
AIDM-50	10.0	20.0	30.0	40.0	50 ± 2.5	10 ± 2.0
AIDM-60	12.0	24.0	36.0	48.0	60 ± 3.0	12 ± 2.0
AIDM-75	15.0	30.0	45.0	60.0	75 ± 3.75	15 ± 2.5
AIDM-100	20.0	40.0	60.0	80.0	100 ± 5.0	20 ± 3.0
AIDM-125	25.0	50.0	75.0	100.0	125 ± 6.25	25 ± 3.0
AIDM-150	30.0	60.0	90.0	120.0	150 ± 7.5	30 ± 3.0
AIDM-200	40.0	80.0	120.0	160.0	200 ± 10.0	40 ± 4.0
AIDM-250	50.0	100.0	150.0	200.0	250 ± 12.5	50 ± 5.0
AIDM-350	70.0	140.0	210.0	280.0	350 ± 17.5	70 ± 7.0
AIDM-500	100.0	200.0	300.0	400.0	500 ± 25.0	100 ± 10.0

AIDM 14-Pin Schematic



** These part numbers do not have 5 equal taps. Tap-to-Tap Delays reference Tap 1.

TEST CONDITIONS -- FAST / TTL

- V_{CC} Supply Voltage 5.00VDC
 Input Pulse Voltage 3.20V
 Input Pulse Rise Time 3.0 ns max.
 Input Pulse Width / Period 1000 / 2000 ns
 1. Measurements made at 25°C
 2. Delay Times measured at 1.50V level of leading edge.
 3. Rise Times measured from 0.75V to 2.40V.
 4. 10pf probe and fixture load on output under test.

OPERATING SPECIFICATIONS

- V_{CC} Supply Voltage 5.00 ± 0.25 VDC
 I_{CC} Supply Current 48 mA Maximum
 Logic "1" Input: V_{IH} 2.00 V min., 5.50 V max.
 I_{IH} 20 µA max. @ 2.70V
 Logic "0" Input: V_{IL} 0.80 V max.
 I_{IL} -0.6 mA mA
 V_{OH} Logic "1" Voltage Out 2.40 V min.
 V_{OL} Logic "0" Voltage Out 0.50 V max.
 P_{WI} Input Pulse Width 40% of Delay min.
 Operating Temperature Range 0° to 70°C
 Storage Temperature Range -65° to +150°C

P/N Description

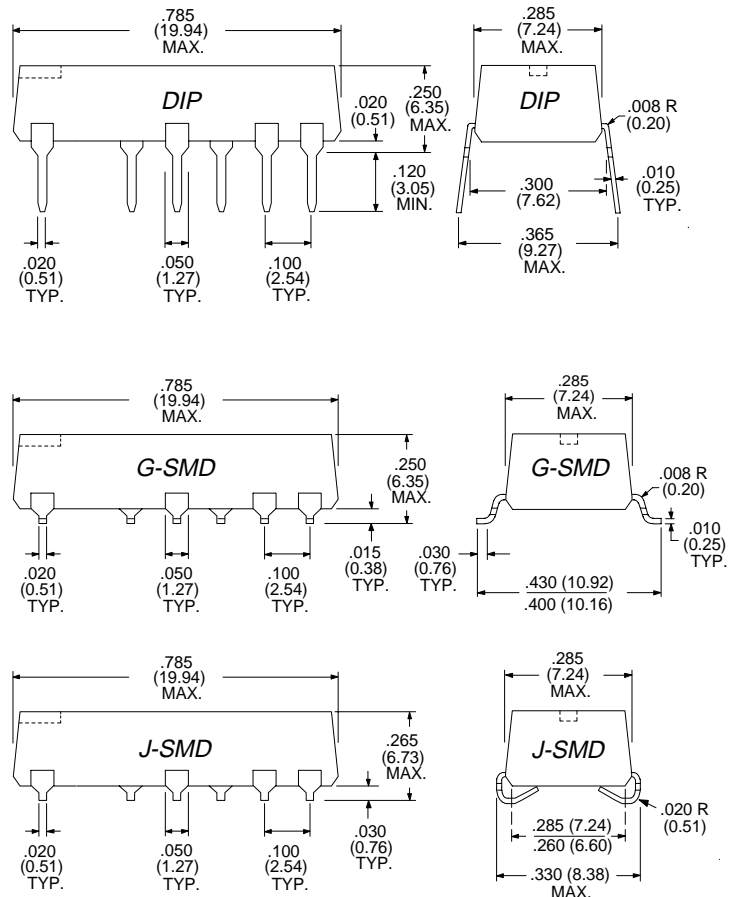
AIDM - XXX X

Buffered 5 Tap Delay
Molded Package Series:
14-pin DIP: AIDM

Total Delay in nanoseconds (ns)
Lead Style: Blank = Thru-hole
G = "Gull Wing" SMD
J = "J" Bend SMD

Examples: AIDM-25G = 25ns (5ns per tap)
74F, 14-Pin G-SMD
AIDM-100 = 100ns (20ns per tap)
74F, 14-Pin DIP

Dimensions in Inches (mm)



Specifications subject to change without notice.

For other values & Custom Designs, contact factory.

AIDM 9901