

01

0131

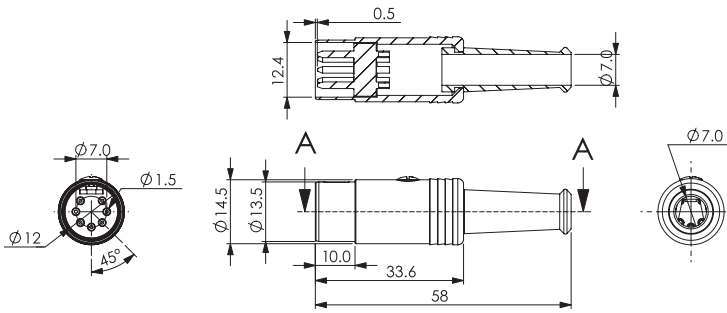
DIN circular connectors



DIN plug, straight version, shielded, with metal housing,
bend protection and solder terminals

01

0131



Environmental conditions

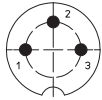
Temperature range -20 °C/+85 °C

Materials

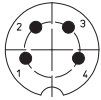
Insulating body	PA, V-0 according to UL94
Contact pin	CuZn, silver-plated
Strain relief	steel, nickel-plated
Housing	CuZn, nickel-plated
Bend protection sleeve	PVC
Screw	steel, nickel-plated

Pin configurations, solder side view

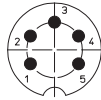
DIN 41524



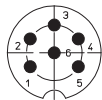
DIN 41524



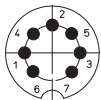
DIN 45322



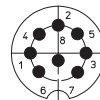
DIN 45322



DIN 45329



DIN 45326



0131 06

0131 07-1

0131 08-1

Mechanical data

Mating cycles

Connectable conductors for solder area

Section \leq AWG 18 (0,75 mm²)
Cable diameter \leq 7,0 mm

Electrical data (at T_{amb} 20 °C)

Rated current \leq 4 A
Rated voltage 100 V AC
Rated impulse voltage 250 V AC RMS/60 s
Insulation resistance \geq 100 M Ω

Associated products

Counterparts
 ☞ 0103 ☞ 0105 ☞ 010599
 ☞ 0107 ☞ 0121 ☞ 0122
 ☞ WB

01

0131

Designation	Pole Number	PU (Pieces)	MDQ (Pieces)
0131 03	3	50	150
0131 04	4	50	150
0131 05	5	50	150
0131 05-1	5	50	150
0131 06	6	50	150
0131 07-1	7	50	150
0131 08-1	8	50	150

Packaging:

in individual plastic bags, in a cardboard box