

PLEASE CHECK WWW.MOLEX.COM FOR LATEST PART INFORMATION

Part Number: [0010011024](#)
Status: **Active**
Overview: [kk](#)
Description: 5.08mm (.200") Pitch KK® Crimp Terminal Housing, 2 Circuits

Documents:

[3D Model](#) [Product Specification PS-99020-0087 \(PDF\)](#)
[Drawing \(PDF\)](#) [RoHS Certificate of Compliance \(PDF\)](#)

Agency Certification

CSA LR19980
 UL E29179

General

Product Family Crimp Housings
 Series [3001](#)
 Overview [kk](#)
 Product Name KK®

Physical

Circuits (maximum) 2
 Color - Resin Natural
 Flammability 94V-2
 Gender Female
 Glow-Wire Compliant No
 Material - Resin Nylon
 Number of Rows 1
 Packaging Type Bag
 Panel Mount No
 Pitch - Mating Interface (in) 0.200 In
 Pitch - Mating Interface (mm) 5.08 mm
 Temperature Range - Operating -40°C to +105°C

Solder Process Data

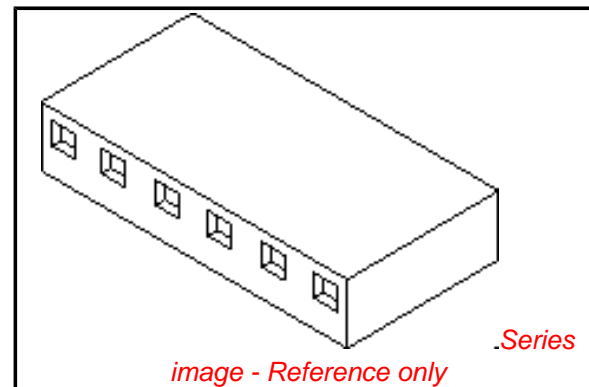
Lead-free Process Capability Wave Capable (TH only)

Material Info

Old Part Number 3001-02

Reference - Drawing Numbers

Product Specification PS-99020-0087
 Sales Drawing SD-91813-001, SDE-3001-N-*



EU RoHS

ELV and RoHS Compliant
REACH SVHC
 Not Reviewed
Halogen-Free Status

China RoHS



Need more information on product environmental compliance?

Email productcompliance@molex.com
 For a multiple part number RoHS Certificate of Compliance, [click here](#)

Please visit the [Contact Us](#) section for any non-product compliance questions.

Search Parts in this Series

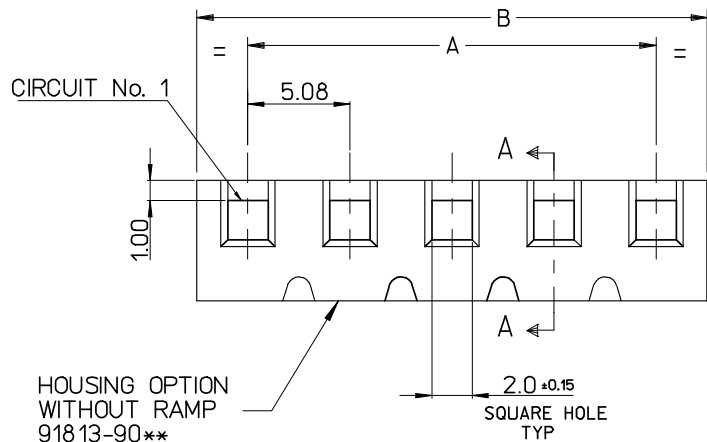
[3001Series](#)

Mates With

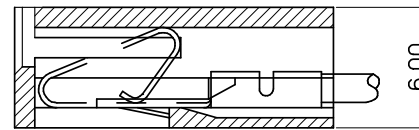
[3061](#) , [3003](#) , [3008](#)

Use With

[2478](#) Crimp Terminals for 18-24 AWG, [2578](#) Crimp Terminals for 22-26 AWG, [2878](#)



1.14 REF. ROUND OR SQUARE PIN.

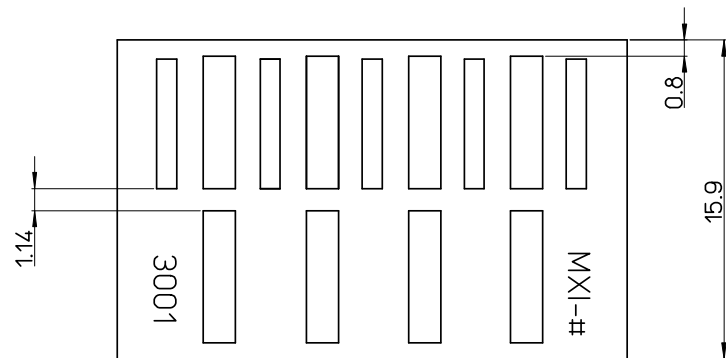


SECTION A-A

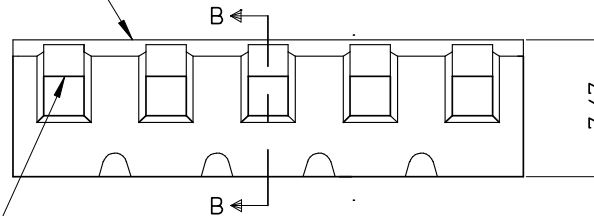
20	91813-9020	91813-9120	96.52 ± .3	101.60 ⁺⁰ / _{-.2}
19	-9019	-9119	91.44 ± 0.3	96.52 ⁺⁰ / _{-.2}
18	-9018	-9118	86.36 ± 0.3	91.44 ⁺⁰ / _{-.2}
17	-9017	-9117	81.28 ± 0.3	86.36 ⁺⁰ / _{-.2}
16	-9016	-9116	76.20 ± 0.25	81.28 ⁺⁰ / _{-.2}
15	-9015	-9115	71.12 ± 0.25	76.20 ⁺⁰ / _{-.2}
14	-9014	-9114	66.04 ± 0.25	71.12 ⁺⁰ / _{-.2}
13	-9013	-9113	60.96 ± 0.25	66.04 ⁺⁰ / _{-.2}
12	-9012	-9112	55.88 ± 0.25	60.96 ⁺⁰ / _{-.2}
11	-9011	-9111	50.80 ± 0.20	55.88 ⁺⁰ / _{-.2}
10	-9010	-9110	45.72 ± 0.20	50.80 ⁺⁰ / _{-.2}
9	-9009	-9109	40.64 ± 0.20	45.72 ⁺⁰ / _{-.2}
8	-9008	-9108	35.56 ± 0.20	40.64 ⁺⁰ / _{-.2}
7	-9007	-9107	30.48 ± 0.20	35.56 ⁺⁰ / _{-.2}
6	-9006	-9106	25.40 ± 0.10	30.48 ⁺⁰ / _{-.2}
5	-9005	-9105	20.32 ± 0.10	25.40 ⁺⁰ / _{-.15}
4	-9004	-9104	15.24 ± 0.10	20.32 ⁺⁰ / _{-.15}
3	-9003	-9103	10.16 ± 0.10	15.24 ⁺⁰ / _{-.15}
2	91813-9002	91813-9102	5.08 ± 0.10	10.16 ⁺⁰ / _{-.15}
			A	B
DIMENSION				

HOUSING OPTION WITHOUT RAMP 91813-90**

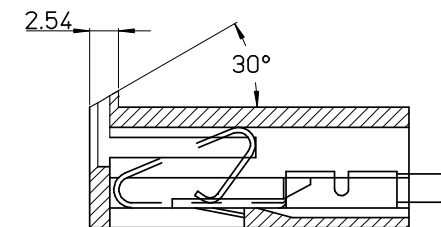
2.0 ± 0.15 SQUARE HOLE TYP



HOUSING OPTION WITH RAMP 91813-91**



SECTION B-B



SECTION B-B

NOTE:

1. MATERIAL: POLAMIDE (PA6), UL-94 V-2 COLOUR WHITE
2. THIS HOUSING USES KK TERM. No's. 2478, 2578 & 2878
3. COLOUR VARIATION MAY BE VISIBLE ON THE HOUSING SURFACES
4. PRODUCT SPECIFICATION: PS-99020-0087

ADDED PROD. SPEC	2008/02/04
EC NO: E2008-0301	2008/02/06
DRWN: ILK/ERNAN	2008/02/07
CHKD:	
APPR: BMAGUIRE	
REV	DESCRIPTION

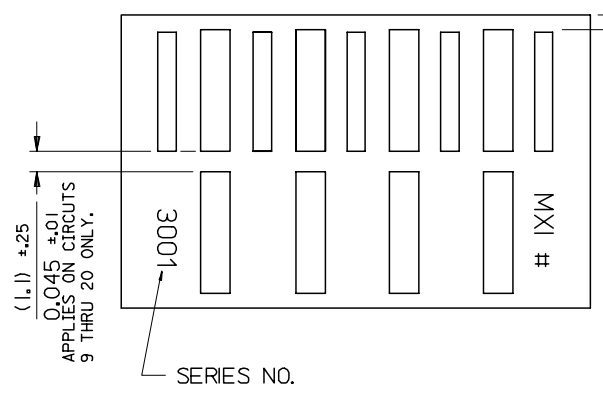
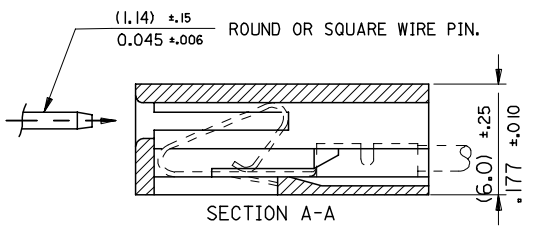
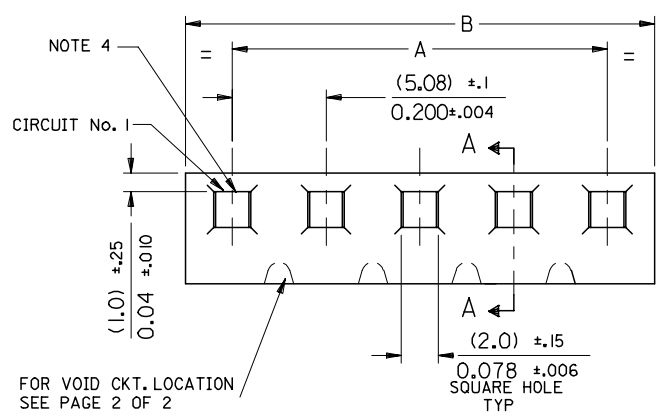
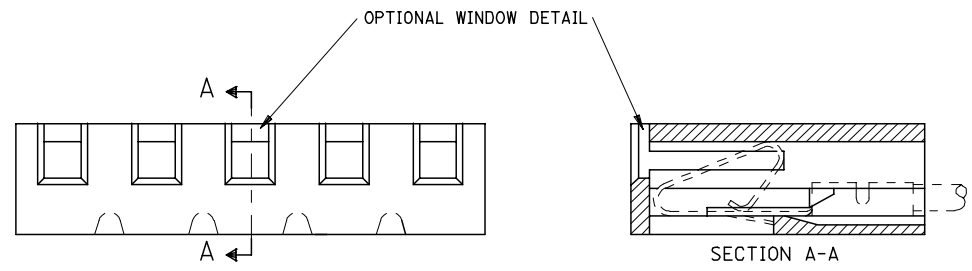
QUALITY SYMBOLS	DESCRIPTION
▽=0	
▽=0	

GENERAL TOLERANCES (UNLESS SPECIFIED)	DIMENSION STYLE
	MM ONLY
4 PLACES ± ---	DRAWN BY DATE
3 PLACES ± ---	DWASZKIEWICZ 2006/06/08
2 PLACES ± 0.25	CHECKED BY DATE
1 PLACE ± 0.35	J. DENNEHY
ANGULAR ± 1/2°	APPROVED BY DATE
	J. DENNEHY
DRAFT WHERE APPLICABLE MUST REMAIN WITHIN DIMENSIONS	MATERIAL NO.
	SEE CHART

SCALE	DESIGN UNITS	THIRD ANGLE PROJECTION
7:1	METRIC	
TITLE		
5.08MM KK CRP TERM HSG GLOW WIRE COMPATIBLE		
MOLEX INCORPORATED		
DOCUMENT NO.		
SD-91813-001		
SHEET NO.		
1 OF 1		
THIS DRAWING CONTAINS INFORMATION THAT IS PROPRIETARY TO MOLEX INCORPORATED AND SHOULD NOT BE USED WITHOUT WRITTEN PERMISSION		

SCALE	DESIGN UNITS	THIRD ANGLE PROJECTION
7:1	METRIC	
TITLE		
5.08MM KK CRP TERM HSG GLOW WIRE COMPATIBLE		
MOLEX INCORPORATED		
DOCUMENT NO.		
SD-91813-001		
SHEET NO.		
1 OF 1		
THIS DRAWING CONTAINS INFORMATION THAT IS PROPRIETARY TO MOLEX INCORPORATED AND SHOULD NOT BE USED WITHOUT WRITTEN PERMISSION		

NOTE :
 1. DIMENSIONS SHOWN MILLIMETERS
 INCHES
 2. FOR OTHER PRODUCT SPEC'S. SEE PSX 10-39.
 3. THIS HOUSING USES KK TERM. No's. 2478, 2578 & 28



MAT'L: NYLON

CENTER RIB ONLY

10-01-1204	E-3001-20	3.800 ±.012	4.000 ^{+0.016} _{-0.016}	96.52 ±0.3	101.60 ^{+0.3} _{-0.3}
-1194	-19	3.600 ±.012	3.800 ^{+0.016} _{-0.016}	91.44 ±0.3	96.52 ^{+0.3} _{-0.3}
-1184	-18	3.400 ±.012	3.600 ^{+0.016} _{-0.016}	86.36 ±0.3	91.44 ^{+0.3} _{-0.3}
-1174	-17	3.200 ±.012	3.400 ^{+0.016} _{-0.016}	81.28 ±0.3	86.36 ^{+0.3} _{-0.3}
-1164	-16	3.000 ±.010	3.200 ^{+0.016} _{-0.016}	76.20 ±0.25	81.28 ^{+0.3} _{-0.3}
-1154	-15	2.800 ±.010	3.000 ^{+0.016} _{-0.016}	71.12 ±0.25	76.20 ^{+0.3} _{-0.3}
-1144	-14	2.600 ±.010	2.800 ^{+0.016} _{-0.016}	66.04 ±0.25	71.12 ^{+0.3} _{-0.3}
-1134	-13	2.400 ±.010	2.600 ^{+0.016} _{-0.016}	60.96 ±0.25	66.04 ^{+0.3} _{-0.3}
-1124	-12	2.200 ±.010	2.400 ^{+0.016} _{-0.016}	55.88 ±0.25	60.96 ^{+0.3} _{-0.3}
-1114	-11	2.000 ±.008	2.200 ^{+0.012} _{-0.012}	50.80 ±0.20	55.88 ^{+0.3} _{-0.3}
-1104	-10	1.800 ±.008	2.000 ^{+0.008} _{-0.008}	45.72 ±0.20	50.80 ^{+0.3} _{-0.3}
-1094	-9	1.600 ±.008	1.800 ^{+0.008} _{-0.008}	40.64 ±0.20	45.72 ^{+0.3} _{-0.3}
-1084	-8	1.400 ±.008	1.600 ^{+0.008} _{-0.008}	35.56 ±0.20	40.64 ^{+0.3} _{-0.3}
-1074	-7	1.200 ±.008	1.400 ^{+0.008} _{-0.008}	30.48 ±0.20	35.56 ^{+0.3} _{-0.3}
-1064	-6	1.000 ±.004	1.200 ^{+0.008} _{-0.008}	25.40 ±0.10	30.48 ^{+0.3} _{-0.3}
-1054	-5	.800 ±.004	1.000 ^{+0.006} _{-0.006}	20.32 ±0.10	25.40 ^{+0.3} _{-0.3}
-1044	-4	.600 ±.004	.800 ^{+0.006} _{-0.006}	15.24 ±0.10	20.32 ^{+0.3} _{-0.3}
-1034	-3	.400 ±.004	.600 ^{+0.006} _{-0.006}	10.16 ±0.10	15.24 ^{+0.3} _{-0.3}
-1024	-2	.200 ±.004	.400 ^{+0.006} _{-0.006}	5.08 ±0.10	10.16 ^{+0.3} _{-0.3}
10-01-1014	E-3001-1		.200 ^{+0.006} _{-0.006}		5.08 ^{+0.3} _{-0.3}
PART No.	ENG. No.	ENGLISH		METRIC	
		A	B	A	B

CORRECT TEXT LOC
 EC NO: E2007-0720
 DRWN: DWASZKI EMI CZ 2007/03/28
 CHKD: D. MOR ARTY 2007/03/29
 APPR: DENNEHY 2007/04/04

QUALITY SYMBOLS
 ▽=0
 ▽=0

GENERAL TOLERANCES (UNLESS SPECIFIED)

	mm	INCH
4 PLACES	± ---	± ---
3 PLACES	± ---	± .010
2 PLACES	± 0.25	± .014
1 PLACE	± 0.35	± ---

ANGULAR ±1/2°

DRAFT WHERE APPLICABLE MUST REMAIN WITHIN DIMENSIONS

DIMENSION STYLE
 MM/IN

SCALE
 7:1

DESIGN UNITS
 METRIC

THIRD ANGLE PROJECTION

DRAWN BY P. MOORE **DATE** 1998/09/15
CHECKED BY MGOONEY **DATE** 1999/03/12
APPROVED BY MWILHITE **DATE** 1999/03/12

TITLE 5.08MM KK CRP TERM HSG

MATERIAL NO. SEE CHART **DOCUMENT NO.** SDE-3001-N-* **SHEET NO.** 1 OF 1

MOLEX MOLEX INCORPORATED

THIS DRAWING CONTAINS INFORMATION THAT IS PROPRIETARY TO MOLEX INCORPORATED AND SHOULD NOT BE USED WITHOUT WRITTEN PERMISSION

