



# E3 Series<sup>®</sup> Combined Fire and MNS System

## Description

The Gamewell-FCI, E3 Series<sup>®</sup> Broadband Emergency Voice Evacuation System and the E3 Series Broadband Networked Fire Alarm System can be combined on the common network to form a combination Fire and Mass Notification (MNS) System in accordance with the NFPA and UL Standard UL2572 requirements. The E3 Series modules, nodes and control panels are peer-to-peer, self-regenerating, token ring passing networks consisting of either of the following:

- 2 to 64 nodes
- up to 122 nodes with the addition of an ANX

Note: The ANX is used for Fire applications only.

The E3 Series System is a modular design. This adaptable design allows a wide range of configurations to form an integrated, distributed fire alarm system in combination with the audio evacuation for use with both Fire and Mass Notification functions. In addition, the design can be used as a dedicated, standalone Mass Notification System without a fire alarm service.

The network communication conveys all of the following Fire Alarm and Mass Notification control functions:

- Audio evacuation
- Voice paging
- Fire fighter communications over a single pair of wires or fiber-optic cable

A Region contains only one ACU (Autonomous Control Unit), and multiple LOCs (Local Operating Consoles). Speaker circuits cannot be shared by Regions. The individual node types and modules in the E3 Series System family are interconnected to form the ACU and the LOC panels for Mass Notification as well as the following:

- Fire Command
- Control and Detection
- AV Signaling
- Audio functional units within the overall network system

E3 Series<sup>®</sup> is a registered trademark of Honeywell International Inc.  
UL<sup>®</sup> is a registered trademark of Underwriter's Laboratories Inc.

## Combined Fire and MNS System



E3 Series Combined Fire and MNS System

## Features

- Listed under ANSI/UL<sup>®</sup> Standard UL2572 for Mass Notification.
- Listed under ANSI/UL Standard 864, 9th Edition.
- IBC Seismic Certified.
- Offers the Base Platform for the Emergency Communications System.
- Provides true, seamless and scalable integration for Fire and Mass Notification that is configured applying the E3 Series building blocks using up to 122 nodes.
- Includes a cost-effective, supervised, "Style 7" network wiring using a single pair of wire or fiber-optics at 625K baud.
- Contains a compact, Local Operating Console (LOC) that is designed for installation in lobbies, doorways and hallways allowing quick access to do the following:
  - Broadcast MNS announcements.
  - View the System Status messages.
- Designed with a user-friendly, color touchscreen display that provides all Fire and MNS Events at all locations.
- Installs a simple configuration of multiple LOCs with expandability from 16 to 64 programmable switches for status, message activation and control.

SIGNALING



LISTED  
S1869  
S1949



### GAMEWELL-FCI

12 Clintonville Road, Northford, CT 06472-1610 USA • Tel: (203) 484-7161 • Fax: (203) 484-7118

Specifications are for information only, are not intended for installation purposes, and are subject to change without notice. No responsibility is assumed by Gamewell-FCI for their use.

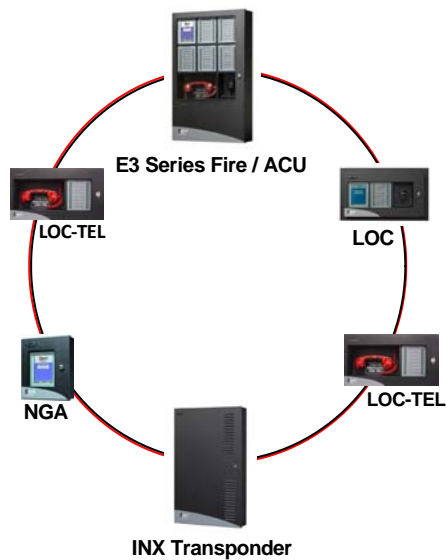


Figure 1 In-Building MNS Setup

## Features (Continued)

- Uses fully supervised wiring outputs for outstanding protection
- Broadcasts a digital, audio, resonant sound to meet the intelligibility requirements
- Supports each audio node with up to 150 watts of audio power, provided by three, 50 watt amplifiers in addition to providing 50 watts of standby power
- Stores distributed, digital message storage at each audio amplifier location for maximum survivability
- Applies Advanced Boolean Logic programming to reduce equipment costs by providing software solutions to complex configurations using the following devices.
  - Timers
  - Sequencing
  - Schedulers

## MASS NOTIFICATION SYSTEM CABINET CONFIGURATIONS

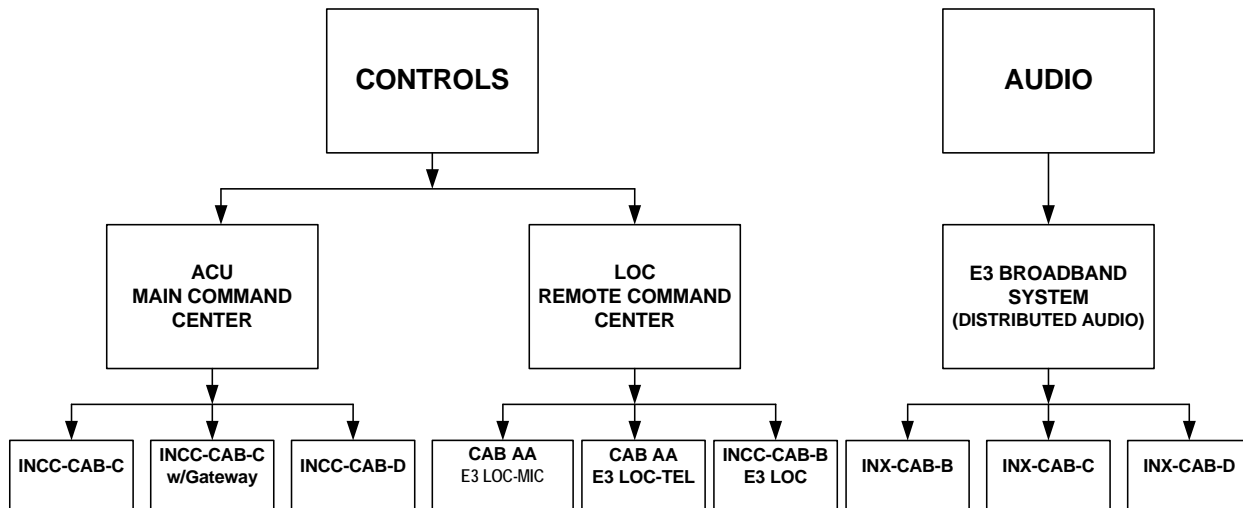


Figure 2 Mass Notification System Cabinet Configurations

## Ordering Information

### E3 Cabinets and Remote Cabinets for MNS

Part Number	Description
-------------	-------------

#### REMOTE "AA" CAB SIZE

<b>Remote "AA" CAB</b>	Replaces E3BB-BA
<b>Dimensions:</b>	19 1/4" W x 10" H x 4 1/2" D (49 W x 25 H x 11 D cm)
E3BB-BAA	Enclosure, LOC, "AA" Size, Black
E3BB-RAA	Enclosure, LOC, "AA" Size, Red
E3ID3-A	Assembly, Door, Inner, 3 Slots, "AA" (NGA, ASM-16 and MIC)
E3ID2-TA	Assembly, Door, Inner, 2 Slots, "AA" (INCC-TEL and ASM-16)
90510	Kit, AOM-TEL Plate, E3 (LOC)
90492	Thumb Lock

#### REMOTE "AA1 & A2" CAB SIZE

Remote "AA1 & A2" CAB	
Remote "AA1" CAB	Replaces E3BB-BA1
<b>Dimensions:</b>	8 3/4" W x 10" H x 4 1/2" D (22.2 W x 25 H x 11 D cm)
E3BB-BAA1	Enclosure, "AA1" Size, Black
E3BB-RAA1	Enclosure, "AA1" Size, Red
Remote "A2" CAB	
<b>Dimensions:</b>	13 1/4" W x 10" H x 4 1/2" D (40 W x 25 H x 11 D cm)
E3BB-BA2	Enclosure, "A2" Size, Black (Deep)
E3BB-RA2	Enclosure, "A2" Size, Red (Deep)
Flush Cabinet A2 Annunciators	
E3BB-NGA-FLUSH	
CAB A2 Remote Flush NGA ANN with Password Protection	

#### E3 SERIES CABINETS "B", "C", "D" SIZES

##### CABINET "B" SIZE

<b>Dimensions:</b>	19 3/8 W x 19 3/8" H x 4 1/2" D (49 W x 49 H x 11 D cm)
E3BB-BB	Enclosure, LOC "B" Size, Black
E3BB-RB	Enclosure, LOC "B" Size, Red
1100-0453	INCC-IDT, Inner Door with 2 Slots, INCC-TEL LOC
1100-0454	INCC-ID-6, Inner Door with 6 Slots, INCC-CAB-LOC
1100-0460	INX-CAB, Enclosure, Transponder, B Size, Black
1100-0461	INX-CAB-R, Enclosure, Transponder, B Size, Red

## Ordering Information (Continued)

### E3 Cabinets and Remote Cabinets for MNS

Part Number	Description
-------------	-------------

#### CABINET "C" SIZE

<b>Dimensions:</b>	19 3/8" W x 30" H x 4 1/2" D (49 W x 76 H x 11 D cm)
E3BB-BC/INCC	Enclosure, Combination Fire/ACU Black "C" Size
E3BB-RC/INCC	Enclosure, Combination Fire/ACU Red "C" Size
E3BB-BC/INX	Enclosure, Transponder, "C" Size, Black
E3BB-RC/INX	Enclosure, Transponder, "C" Size, Red
<b>MOUNTING PLATE, "C" CAB</b>	
E3-INCC-CPLATE	ACU Command Center Module Mounting Plate, "C" Size
E3-INX-CPLATE	Transponder Module Mounting Plate "C" Size
<b>INNER DOOR, "C" SIZE</b>	
E3ID3-C	Assembly, Door, Inner, 3-Bay, "C" Size

#### CABINET "D" SIZE

<b>Dimensions:</b>	19 3/8" W x 41" H x 4 1/2" D (49 W x 104 H x 11 D cm)
E3BB-BD/INCC	Enclosure, Combination Fire/ACU Black "D" Size
E3BB-RD/INCC	Enclosure, Combination Fire/ACU Red "C" Size
E3BB-BD/INX	Enclosure, Transponder, "D" Size, Black
E3BB-RD/INX	Enclosure, Transponder, "D" Size, Red
<b>MOUNTING PLATE "D" CAB</b>	
E3-INCC-DPLATE	ACU Command Center Module Mounting Plate, "D" Size
E3-INX-DPLATE	Transponder Module Mounting Plate, "D" Size
<b>INNER DOOR, "D" SIZE</b>	
E3ID3-D	Assembly, Door, Inner, 3-Bay, "D" Size
<b>OPTIONAL EXTENDER PLATE</b>	
AM-50 Plate	AM-50 Extender Plate

#### E3 SERIES TRIMKIT

E3-TRIMKIT-A	Assembly, FNL, TrimRing, CAB A/AA
E3-TRIMKIT-A1	Assembly, FNL, TrimRing, CAB AA1
E3-TRIMKIT-A2	Assembly, FNL, TrimRing, CAB A2, E3
E3-TRIMKIT-B	Assembly, FNL, TrimRing, CAB C, E3
E3-TRIMKIT-C	Assembly, FNL, TrimRing, CAB C, E3
E3-TRIMKIT-D	Assembly, FNL, TrimRing, CAB D, E3

#### GAMEWELL-FCI

12 Clintonville Road, Northford, CT 06472-1610 USA • Tel: (203) 484-7161 • Fax: (203) 484-7118

[www.gamewell-fci.com](http://www.gamewell-fci.com)

9021-60758 Rev. C page 3 of 3