

RL-1282

POWER LINE CHOKES

DESCRIPTION

- Power Line Chokes

ENVIRONMENTAL DATA

- Storage temperature range: -55°C to +130°C
- Operating temperature range: -40°C to +130°C

PACKAGING INFORMATION

- Packaging information: pg. 493

FEATURES & APPLICATIONS

- 56 standard values to choose from
- Inductances range from 3.9μH to 150,000μH
- Use of high saturation material makes these coils ideal for use in switching regulated power supply type applications
- Size of the coils make them easy to incorporate in equipment
- Typical applications include: power amplifiers, power supplies, SCR and TRIAC controls, speaker crossover networks, and filters

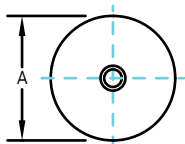
Verify operation with sample in actual circuit. Order samples at www.rencousa.com.

MECHANICAL DIMENSIONS

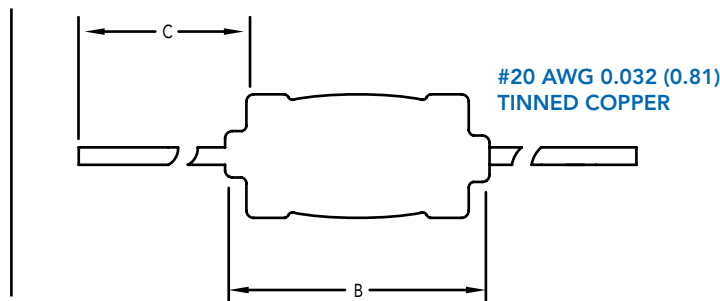
U.S. Standard (mm)

PART NUMBER	A (MAX.)	B (MAX.)	C (MIN.)	PART WEIGHT
RL-1282	0.550 (13.970)	1.000 (25.400)	1.000 (25.400)	12.0g (0.42oz)

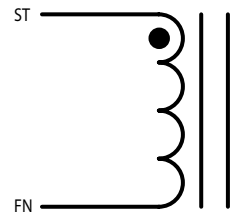
FRONT VIEW



SIDE VIEW



SCHEMATIC



RENCO ELECTRONICS INC.

595 International Place, Rockledge, FL 32955-4200 USA • www.rencousa.com • ISO 9001 Certified
Toll Free Engineering Hot Line: 800.645.5828 • P: 321.637.1000 • F: 321.637.1600



RL-1282

Renco Part No. RL-1282	Inductance (μ H)	DCR Max. (Ohms)	Isat (A)	Irms (A)
RL-1282-3.9	3.9	0.007	47.000	6.000
RL-1282-4.7	4.7	0.008	42.000	6.000
RL-1282-5.6	5.6	0.009	35.000	6.000
RL-1282-6.8	6.8	0.010	29.000	6.000
RL-1282-8.2	8.2	0.011	24.000	6.000
RL-1282-10	10.0	0.012	19.000	6.000
RL-1282-12	12.0	0.013	16.000	6.000
RL-1282-15	15.0	0.014	14.800	6.000
RL-1281-18	18.0	0.015	13.400	6.000
RL-1282-22	22.0	0.016	12.400	6.000
RL-1282-27	27.0	0.017	11.200	6.000
RL-1282-33	33.0	0.021	10.200	6.000
RL-1282-39	39.0	0.023	9.300	6.000
RL-1282-47	47.0	0.025	8.700	6.000
RL-1282-56	56.0	0.028	8.000	6.000
RL-1282-68	68.0	0.039	7.000	4.700
RL-1282-82	82.0	0.043	6.300	4.700
RL-1282-100	100.0	0.055	5.700	3.800
RL-1282-120	120.0	0.076	5.300	3.000
RL-1282-150	150.0	0.084	4.700	3.000
RL-1282-180	180.0	0.096	4.300	3.000
RL-1282-220	220.0	0.108	4.000	3.000
RL-1282-270	270.0	0.151	3.600	2.300
RL-1282-330	330.0	0.168	3.200	2.300
RL-1282-390	390.0	0.182	2.900	2.300
RL-1282-470	470.0	0.202	2.600	2.300
RL-1282-560	560.0	0.348	2.400	1.400
RL-1282-680	680.0	0.470	2.200	1.200
RL-1282-820	820.0	0.500	2.000	1.200

RL-1282 TABLE CONTINUES ON FOLLOWING PAGE

NOTES:

1. INDUCTANCE \pm 15% TESTED AT 1.0 kHz, 0.1 Vrms
2. 10% AND 5% TOLERANCES OPTIONAL
3. ELECTRICAL SPECIFICATIONS MEASURED AT 25°C
4. Isat - DC CURRENT THAT WILL CAUSE INDUCTANCE TO DROP BY 5%
5. Irms - CURRENT THAT CAUSES THE TEMPERATURE TO RISE APPROX. 40°C ABOVE AMBIENT OF 25°C
6. PART FINISHED WITH 135°C POLYOLEFIN SLEEVING THAT MEETS UL-224 VW-1
7. FOR APPLICATIONS OVER 24 VOLTS VERIFY OPERATION WITH SAMPLE IN ACTUAL CIRCUIT



RENCO ELECTRONICS INC.

595 International Place, Rockledge, FL 32955-4200 USA • www.rencousa.com • ISO 9001 Certified
Toll Free Engineering Hot Line: 800.645.5828 • P: 321.637.1000 • F: 321.637.1600



RL-1282

Renco Part No. RL-1282	Inductance (μ H)	DCR Max. (Ohms)	Isat (A)	Irms (A)
RL-1282-1000	1000.0	0.570	1.800	1.200
RL-1282-1200	1200.0	0.648	1.700	1.200
RL-1282-1500	1500.0	0.888	1.550	0.900
RL-1282-1800	1800.0	1.160	1.400	0.750
RL-1282-2200	2200.0	1.200	1.250	0.750
RL-1282-2700	2700.0	1.440	1.100	0.750
RL-1282-3300	3300.0	1.920	1.000	0.590
RL-1282-3900	3900.0	2.160	0.900	0.590
RL-1282-4700	4700.0	2.500	0.850	0.590
RL-1282-5600	5600.0	3.200	0.780	0.450
RL-1282-6800	6800.0	4.000	0.700	0.450
RL-1282-8200	8200.0	5.200	0.650	0.350
RL-1282-10000	10000.0	6.00	0.600	0.350
RL-1282-12000	12000.0	8.00	0.540	0.270
RL-1282-15000	15000.0	10.00	0.480	0.200
RL-1282-18000	18000.0	11.00	0.460	0.200
RL-1282-22000	22000.0	13.00	0.390	0.200
RL-1282-27000	27000.0	15.00	0.355	0.200
RL-1282-33000	33000.0	21.00	0.330	0.160
RL-1282-39000	39000.0	23.20	0.300	0.160
RL-1282-47000	47000.0	32.00	0.270	0.120
RL-1282-56000	56000.0	35.00	0.175	0.120
RL-1282-68000	68000.0	48.00	0.145	0.095
RL-1282-82000	82000.0	54.30	0.120	0.095
RL-1282-100000	100000.0	68.50	0.100	0.070
RL-1282-120000	120000.0	75.00	0.080	0.070
RL-1282-150000	150000.0	84.30	0.060	0.070

NOTES:

1. INDUCTANCE \pm 15% TESTED AT 1.0 kHz, 0.1 Vrms
2. 10% AND 5% TOLERANCES OPTIONAL
3. ELECTRICAL SPECIFICATIONS MEASURED AT 25°C
4. Isat - DC CURRENT THAT WILL CAUSE INDUCTANCE TO DROP BY 5%
5. Irms - CURRENT THAT CAUSES THE TEMPERATURE TO RISE APPROX. 40°C ABOVE AMBIENT OF 25°C
6. PART FINISHED WITH 135°C POLYOLEFIN SLEEVING THAT MEETS UL-224 VW-1
7. FOR APPLICATIONS OVER 24 VOLTS VERIFY OPERATION WITH SAMPLE IN ACTUAL CIRCUIT



RENCO ELECTRONICS INC.

595 International Place, Rockledge, FL 32955-4200 USA • www.rencousa.com • ISO 9001 Certified
Toll Free Engineering Hot Line: 800.645.5828 • P: 321.637.1000 • F: 321.637.1600

