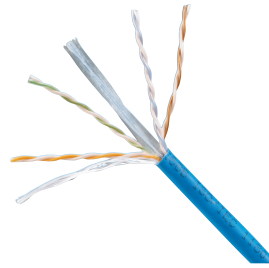


# TX6000™ Enhanced Category 6 UTP Copper Cable

## specifications

Category 6 cable shall exceed ANSI/TIA-568-C.2 and IEC 61156-5 Category 6 component standards. The conductors shall be 23 AWG construction with FEP/polyolefin (CMP) or polyolefin (CMR) insulation. The copper conductors shall be twisted in pairs, separated by a cross-divider and covered by a low smoke, flame-retardant (CMP) jacket or a flame-retardant (CMR) jacket.



## technical information

|                                |   |
|--------------------------------|---|
| <b>Electrical performance:</b> | Certified channel performance in a 4-conductor configuration up to 100 meters and exceeds ANSI/TIA-568-C.2 Category 6 and ISO 11801 Class E standards at swept frequencies up to 250 MHz      |
|                                | Certified component performance up to 100 meters and exceeds the component requirements of ANSI/TIA-568-C.2 and IEC 61156-5 Category 6 component standards at swept frequencies up to 250 MHz |
| <b>Conductors/insulators:</b>  | Plenum – 23 AWG bare copper wire covered by FEP/polyolefin insulation<br>Riser – 23 AWG bare copper wire covered by polyolefin insulation   |
| <b>Flame rating:</b>           | Plenum – NFPA 262 and CSA FT-6<br>Riser – UL1666 and CSA FT-4   |
| <b>PoE compliance:</b>         | Meets IEEE 802.3af and IEEE 802.3at for PoE applications  |
| <b>Installation tension:</b>   | 25 lbf (110 N) maximum  |
| <b>Temperature rating:</b>     | 32°F to 122°F (0°C to 50°C) during installation<br>-4°F to 167°F (-20°C to 75°C) during operation   |
| <b>Cable jacket:</b>           | Plenum – low smoke, flame-retardant PVC<br>Riser – flame-retardant PVC  |
| <b>Cable diameter:</b>         | Plenum – 0.225 in. (5.7mm) nominal<br>Riser – 0.243 in. (6.2mm) nominal   |
| <b>Cable weight:</b>           | Plenum – 30 lbs./1000 ft. (13.6 kg/305m)<br>Riser – 28 lbs./1000 ft. (12.7 kg/305m)   |
| <b>Packaging:</b>              | 1000 ft. (305m), in EZ-Brake™ reel-in-a-box<br>Package tested to ISTA Procedure 1A  |

## key features and benefits

|   |  |
|---|--|
| <b>Third party tested</b>                                 | Cable has been tested as part of the TX6000™ Copper Cabling System by an independent laboratory and complies with the electrical channel requirements of the following standard: ANSI/TIA-568-C.2 Category 6 |
| <b>Guaranteed channel performance above the standards</b> | Industry leading guaranteed channel performance above the TIA/ISO standards with headroom warranty   |
| <b>Integrated pair divider</b>                            | Separates pairs for exceptional cable performance  |
| <b>EZ-Brake™ reel-in-a-box packaging</b>                  | Ensures proper performance and provides quick installation   |
| <b>Tested beyond the standards</b>                        | Cable has been characterized to 550 MHz, 300 MHz above the standard  |
| <b>Descending length cable markings</b>                   | Easy identification of remaining cable reduces installation time and cable scrap   |

## applications

TX6000™ UTP Copper Cable is a component of the Panduit™ TX6000™ UTP Copper Cabling System. Interoperable and backward compatible, this end-to-end system provides design flexibility to protect network investments well into the future. With certified performance to the ANSI/TIA-568-C.2 Category 6 and ISO 11801 Class E standards, this system will support the following applications:

- Ethernet 10BASE-T, 100BASE-T (Fast Ethernet), 1000BASE-T (Gigabit Ethernet), 10GBASE-T (10 Gigabit Ethernet) over limited distances as specified in the industry 10GBASE-T standards)
- 155 Mb/s ATM, 622 Mb/s ATM, 1.2 Gb/s ATM
- Token Ring 4/16

### TX6000™ UTP Copper Cabling System

#### TX6000™ UTP Copper Cable

|                |             |
|----------------|-------------|
| <b>Plenum:</b> | PUP6004*-UY |
| <b>Riser:</b>  | PUR6004*-UY |

#### Mini-Com® TX6™ PLUS UTP Jack Module

|                     |           |
|---------------------|-----------|
| <b>Jack module:</b> | CJ688TG** |
|---------------------|-----------|

#### TX6™ PLUS UTP Patch Cords

|                       |            |
|-----------------------|------------|
| <b>Foot lengths:</b>  | UTPSP3***Y |
| <b>Meter lengths:</b> | UTPSP1M^Y  |

#### DP6™ PLUS Angled Punchdown Patch Panels

|                       |             |
|-----------------------|-------------|
| <b>24-port, 1 RU:</b> | DPA24688TGY |
| <b>48-port, 2 RU:</b> | DPA48688TGY |

#### DP6™ PLUS Flat Punchdown Patch Panels

|                       |            |
|-----------------------|------------|
| <b>12-port:</b>       | DP12688TGY |
| <b>24-port, 1 RU:</b> | DP24688TGY |
| <b>48-port, 2 RU:</b> | DP48688TGY |

#### GP6™ PLUS Category 6 Punchdown System

See website ([www.panduit.com](http://www.panduit.com)) or catalog for complete system information.

#### DP6™ PLUS Flat Punchdown

|                             |       |
|-----------------------------|-------|
| <b>Wire snipping tool:</b>  | CWST  |
| <b>Wire stripping tool:</b> | CJAST |

\*To designate a color, add suffix BU (Blue), WH (White), YL (Yellow), or IG (International Gray). For additional cable colors, contact customer service.

\*\*To designate color, add suffix IW (Off White), EI (Electric Ivory), IG (International Gray), WH (White), BL (Black), OR (Orange), RD (Red), BU (Blue), GR (Green), YL (Yellow), or VL (Violet).

\*\*\*For lengths 1 to 20 feet (increments of one foot) and 25, 30, 35, 40 feet, change the length designation in part number to the desired length. For standard cable colors other than Off White, add suffix BL (Black), BU (Blue), GR (Green), RD (Red), YL (Yellow), OR (Orange), or VL (Violet) before Y at the end of the part number. For example, the part number for a blue, 15-foot patch cord is UTPSP15BUY.

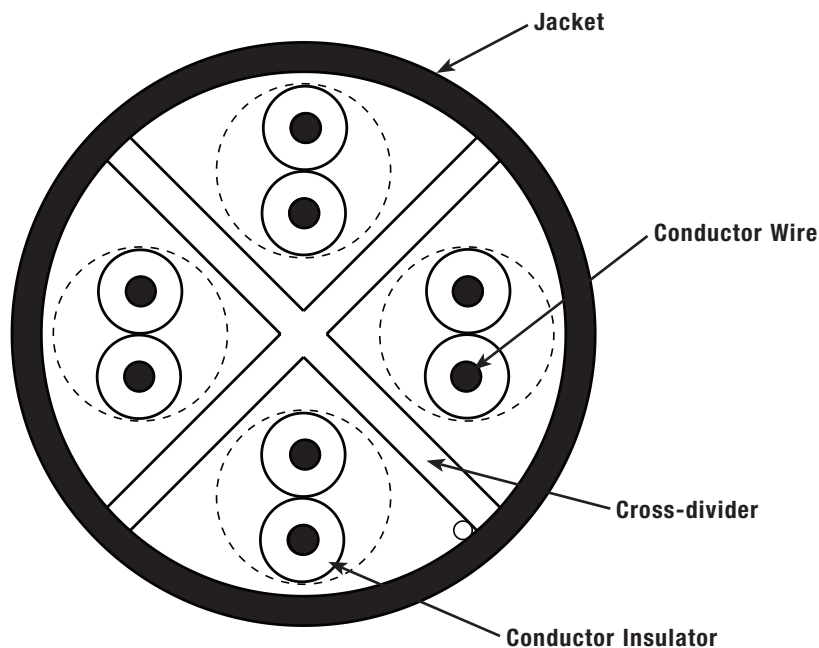
^For lengths 1 to 10 meters (increments of one meter) and 0.5, 1.5, 2.5, 15, 20 meters, change the length designation in the part number to the desired length. For standard cable colors other than Off White, add suffix BL (Black), BU (Blue), RD (Red), YL (Yellow), GR (Green), OR (Orange), or VL (Violet) before Y at the end of the part number. For example, the part number for a blue, 5-meter patch cord is UTPSP5MBUY.

# TX6000™ Enhanced Category 6 UTP Copper Cable

## additional specifications

| Mechanical Test                       |                      |
|---------------------------------------|----------------------|
| Ultimate Breaking Strength            | > 90 lbf (400 N)     |
| Minimum Bend Radius                   | 4 x cable diameter   |
| Electrical Test                       |                      |
| Nominal Velocity of Propagation (NVP) | CMR – 70%, CMP – 72% |
| Operating Voltage, Maximum            | 80V                  |

## cable construction



### WORLDWIDE SUBSIDIARIES AND SALES OFFICES

PANDUIT US/CANADA  
Phone: 800.777.3300

PANDUIT EUROPE LTD.  
London, UK  
cs-emea@panduit.com  
Phone: 44.20.8601.7200

PANDUIT SINGAPORE PTE. LTD.  
Republic of Singapore  
cs-ap@panduit.com  
Phone: 65.6305.7575

PANDUIT JAPAN  
Tokyo, Japan  
cs-japan@panduit.com  
Phone: 81.3.6863.6000

PANDUIT LATIN AMERICA  
Guadalajara, Mexico  
cs-la@panduit.com  
Phone: 52.33.3777.6000

PANDUIT AUSTRALIA PTY. LTD.  
Victoria, Australia  
cs-aus@panduit.com  
Phone: 61.3.9794.9020

For a copy of Panduit product warranties, log on to [www.panduit.com/warranty](http://www.panduit.com/warranty)

For more information

Visit us at [www.panduit.com](http://www.panduit.com)

Contact Customer Service by email: [cs@panduit.com](mailto:cs@panduit.com)  
or by phone: 800.777.3300

**PANDUIT**®

© 2017 Panduit Corp.  
ALL RIGHTS RESERVED.  
COSP260--WW-ENG  
Replaces WW-COSP136  
8/2017