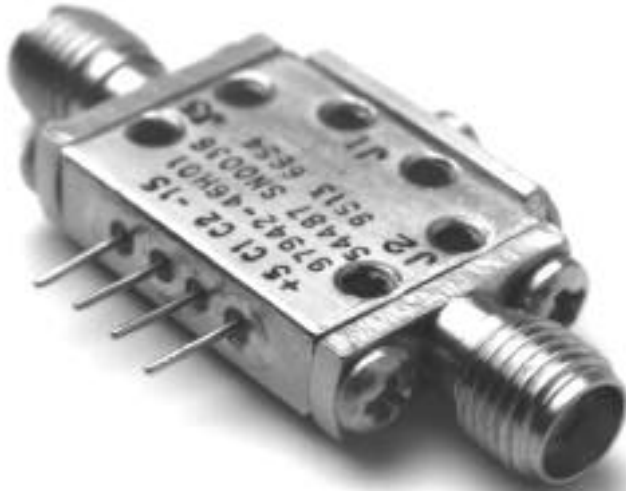


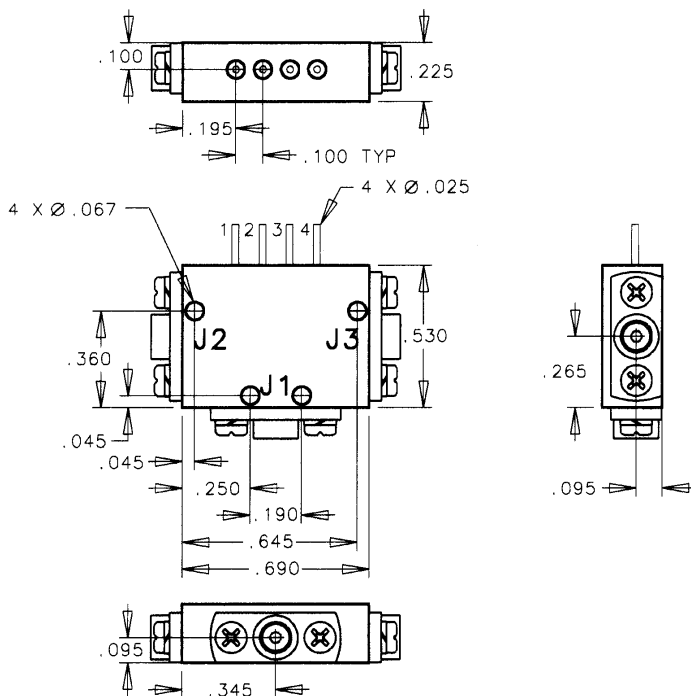
# SINGLE POLE, DOUBLE THROW CONNECTORIZED PLUG-IN SWITCHES



## ELECTRICAL CHARACTERISTICS

PART #	TYPE	FREQ RANGE GHz	LOSS dB	ISO dB	VSWR	SWITCH SPEED ns	RF POWER dBm	DC SUPPLY Volts
6029	SP2T N	9-10	1.5	70	1.5:1	100	25	+5,-5
6033	SP2T N	2-18	2.0	60	2.0:1	100	25	+5,-5

## PACKAGE OUTLINE



## DESCRIPTION

Designed for use in highly integrated systems. The push-on RF and microwave connectors make these switches ideal for ease-of-use in maintenance and automated testing systems. Hermetic, military/industrial design.

## ADDITIONAL FEATURES (#6029)

■ Isolation:  
Up to 70 dB

## CONNECTORS

■ Pin/SMA

## OPERATING ENVIRONMENT

■ Operating Temperature:

-55 to +125°C

■ Storage Temperature:

-65 to +150°C

■ Impedance:

50 ohm

■ Control:

Transistor-Transistor Logic (TTL)

## APPLICATIONS

■ Radar Warning Receivers (RWR)

■ Tracking radar