

## Han 24E HMC-F-c

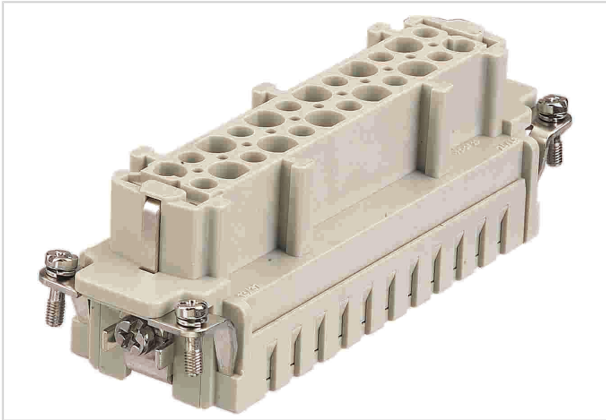


Image is for illustration purposes only. Please refer to product description.

|                    |   |
|--------------------|---|
| Part number        | 09 33 224 2702  |
| Specification      | Han 24E HMC-F-c   |
| HARTING eCatalogue | <a href="https://b2b.harting.com/09332242702">https://b2b.harting.com/09332242702</a> |

### Identification

|          |                        |
|----------|------------------------|
| Category | Inserts                |
| Series   | Han E <sup>®</sup> HMC |

### Version

|                    |   |
|--------------------|---|
| Termination method | Crimp termination                       |
| Gender             | Female                                  |
| Size               | 24 B                                    |
| Number of contacts | 24                                      |
| PE contact         | Yes                                     |
| Details            | Please order crimp contacts separately. |

### Technical characteristics

|   |                            |
|---|----------------------------|
| Conductor cross-section                 | 0.14 ... 4 mm <sup>2</sup> |
| Conductor cross-section                 | AWG 26 ... AWG 12          |
| Rated current                           | 16 A                       |
| Rated voltage                           | 500 V                      |
| Rated impulse voltage                   | 6 kV                       |
| Pollution degree                        | 3                          |
| Insulation resistance                   | >10 <sup>10</sup> Ω        |
| Limiting temperature                    | -40 ... +125 °C            |
| Mating cycles with other HMC components | ≥10,000                    |



Pushing Performance

## Material properties

|   |                        |
|---|------------------------|
| Material (insert)                         | Polycarbonate (PC)     |
| Colour (insert)                           | RAL 7032 (pebble grey) |
| Material flammability class acc. to UL 94 | V-0                    |
| RoHS                                      | compliant              |
| ELV status                                | compliant              |
| China RoHS                                | e                      |
| REACH Annex XVII substances               | No                     |
| REACH ANNEX XIV substances                | No                     |
| REACH SVHC substances                     | No                     |

## Specifications and approvals

|                |                         |
|----------------|-------------------------|
| Specifications | EN 60664-1<br>IEC 61984 |
| Approvals      | DNV GL                  |

## Commercial data

|                                |   |
|--------------------------------|---|
| Packaging size                 | 1   |
| Net weight                     | 78.06 g   |
| Country of origin              | Germany   |
| European customs tariff number | 85366990  |
| eCl@ss                         | 27440205 Contact insert for industrial connectors |