



TAI-SAW TECHNOLOGY CO., LTD.

No. 3, Industrial 2nd Rd., Ping-Chen Industrial District,
Taoyuan, 324, Taiwan, R.O.C.

TEL: 886-3-4690038 FAX: 886-3-4697532

E-mail: tstsales@mail.taisaw.com Web: www.taisaw.com


Product Specifications Approval Sheet


Product Description: SAW Filter 869 MHz SMD 3.0x3.0 mm (BW=2 MHz)

TST Part No.: TA1729A

Customer Part No.: _____

Customer signature required
Company: _____
Division: _____
Approved by : _____
Date: _____

Checked by: _____ David Chang 

Approved by: _____ Bob Chau 

Date: _____ 2014/04/10

1. Customer signed back is required before TST can proceed with sample build and receive orders.
2. Orders received without customer signed back will be regarded as agreement on the specifications.
3. Any specifications changes must be approved upon by both parties and a new revision of specifications shall be released to reflect the changes.



TAI-SAW TECHNOLOGY CO., LTD.

No. 3, Industrial 2nd Rd., Ping-Chen Industrial District,
Taoyuan, 324, Taiwan, R.O.C.

TEL: 886-3-4690038 FAX: 886-3-4697532

E-mail: tstsales@mail.taisaw.com Web: www.taisaw.com

SAW Filter 869MHz

MODEL NO.: TA1729A

REV. NO.:1.0

A. MAXIMUM RATING:

1. Input Power Level: 20 dBm
2. DC Voltage : 3.5V
3. Operating Temperature: -40°C to +85°C
4. Storage Temperature: -40°C to +85°C

RoHS Compliant
Lead free
Lead-free soldering

Electrostatic Sensitive Device (ESD)

B. ELECTRICAL CHARACTERISTICS:

Terminating source impedance (single) : $Z_s = 50 \Omega$

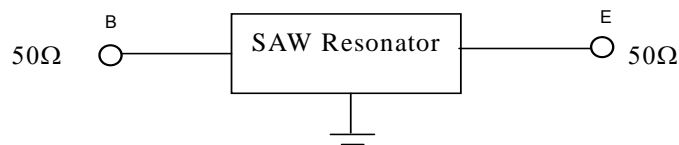
Terminating load impedance(single) : $Z_L = 50 \Omega$

Item	Unit	Min	Type.	Max
Center Frequency Fc	MHz	-	869	-
Insertion Loss (868~870 MHz) IL	dB	-	2.3	3.0
Amplitude ripple (868~870 MHz)	dB	-	0.3	0.6
Attenuation				
100 ~ 300 MHz	dB	45	50	-
300 ~ 845 MHz	dB	40	45	-
845 ~ 853 MHz	dB	38	43	-
879 ~ 883 MHz	dB	15	30	-
883 ~ 915 MHz	dB	40	45	-
915 ~ 945 MHz	dB	45	50	-
945 ~ 1200 MHz	dB	45	55	-
1200 ~ 2000 MHz	dB	35	40	-
Package size	mm	SMD 3x3		

C. TEST CIRCUIT:

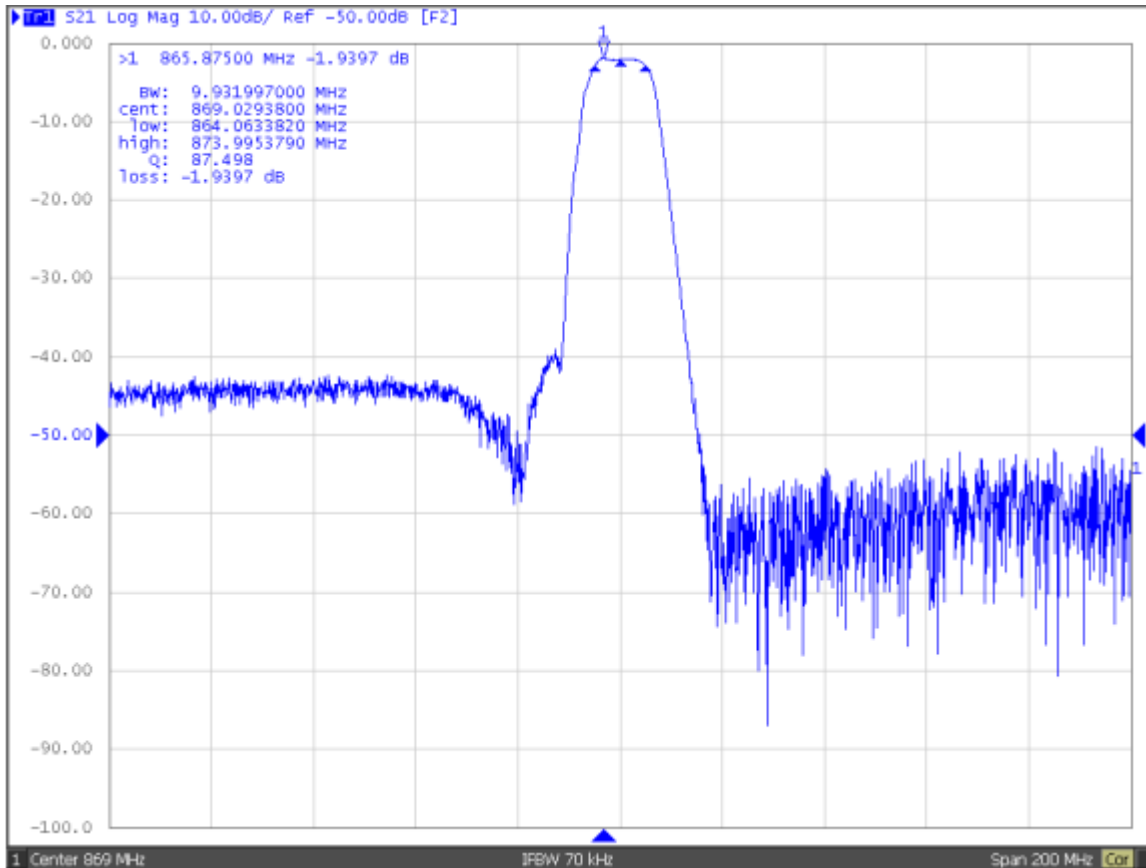
Network analyzer

From 50Ω
Network
Analyzer

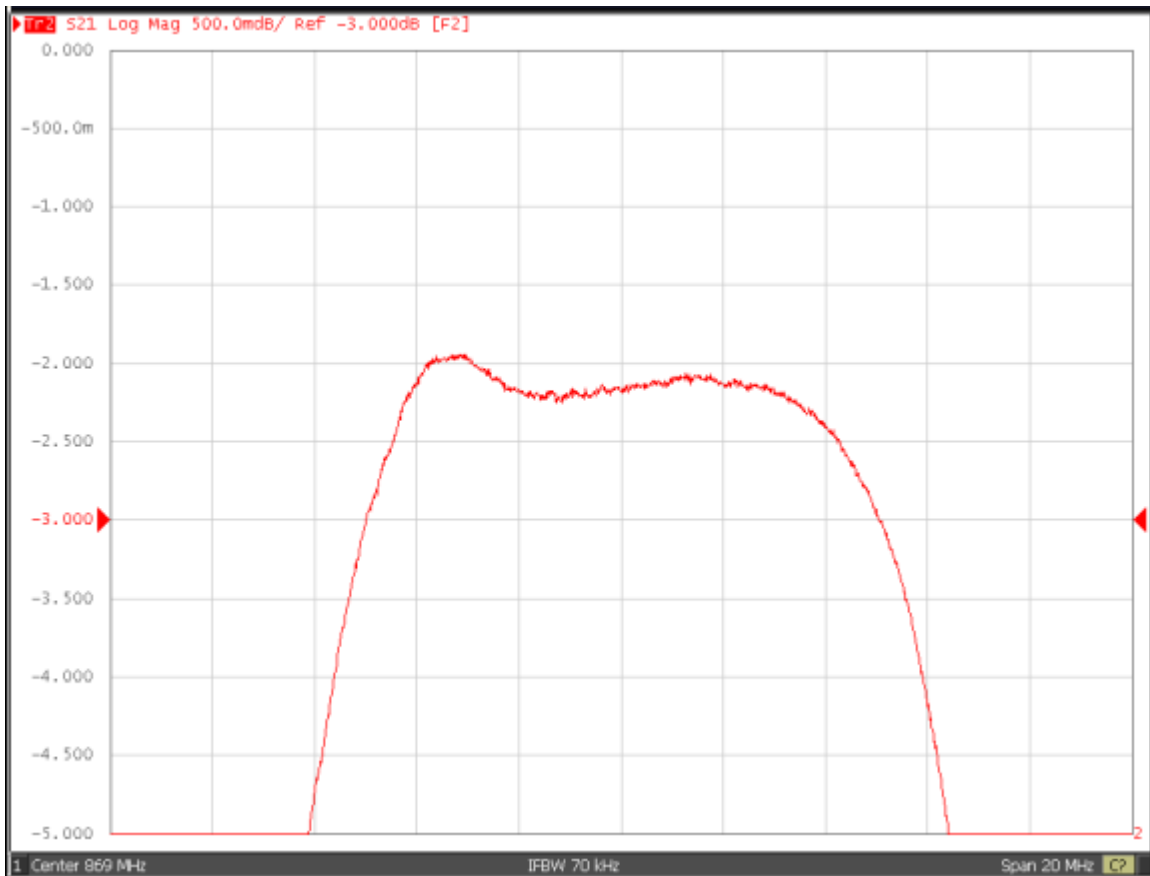


To 50Ω
Network
Analyzer

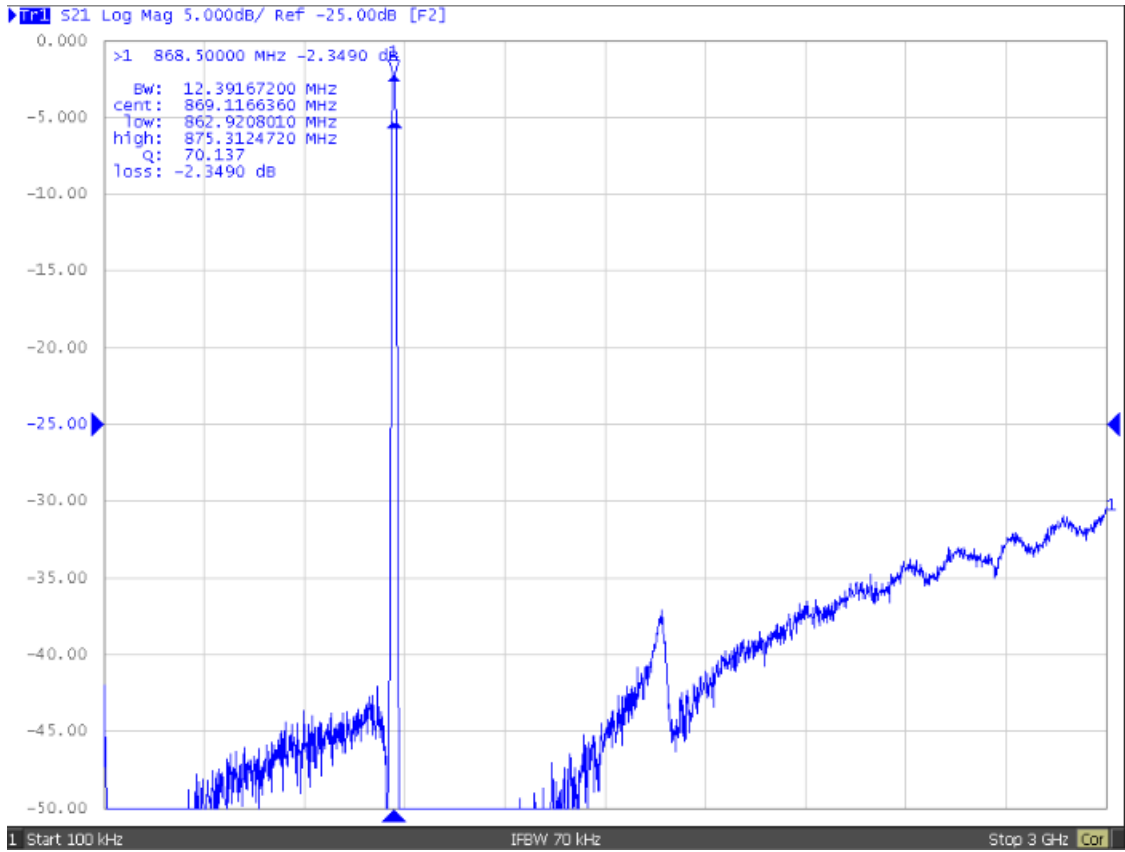
D. Frequency Characteristics: S21 response: (Span 200MHz)



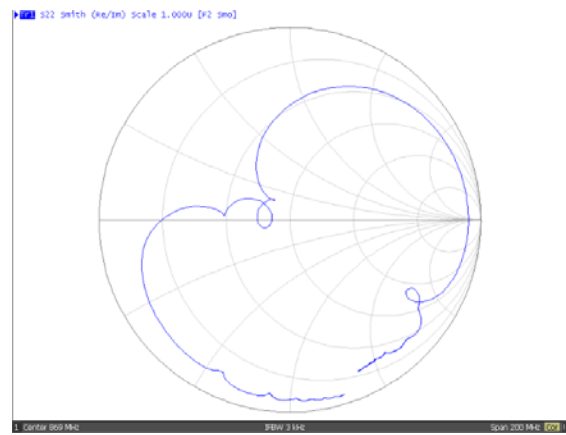
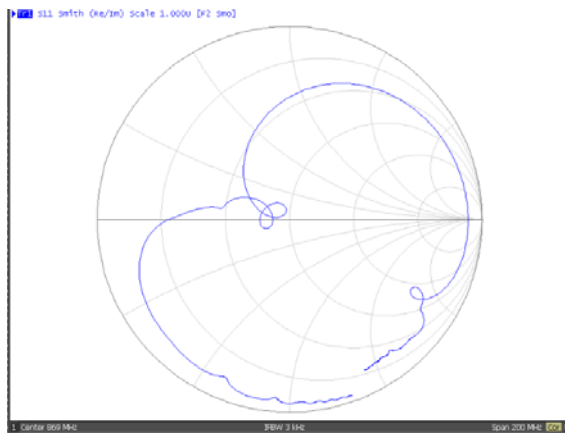
S21 response: (Span 100MHz)



S21 response: (100KHz ~ 3GHz)



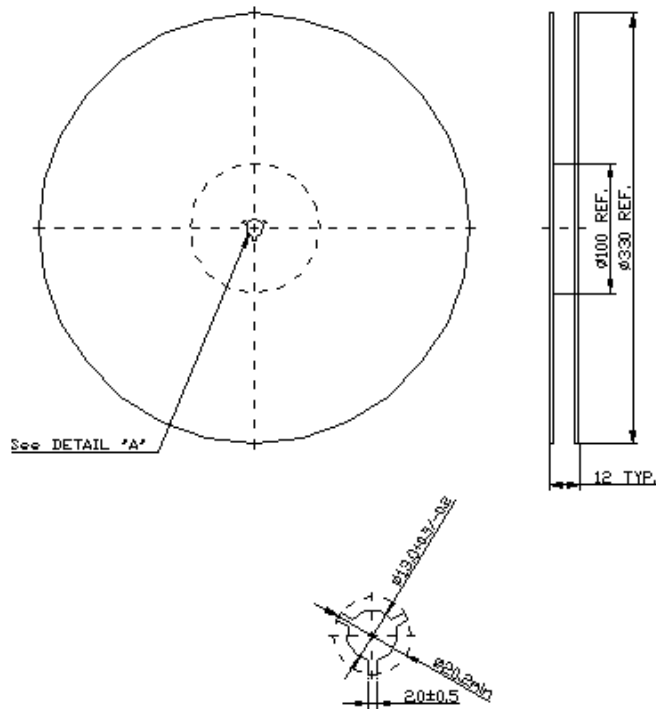
S11/S22 response:



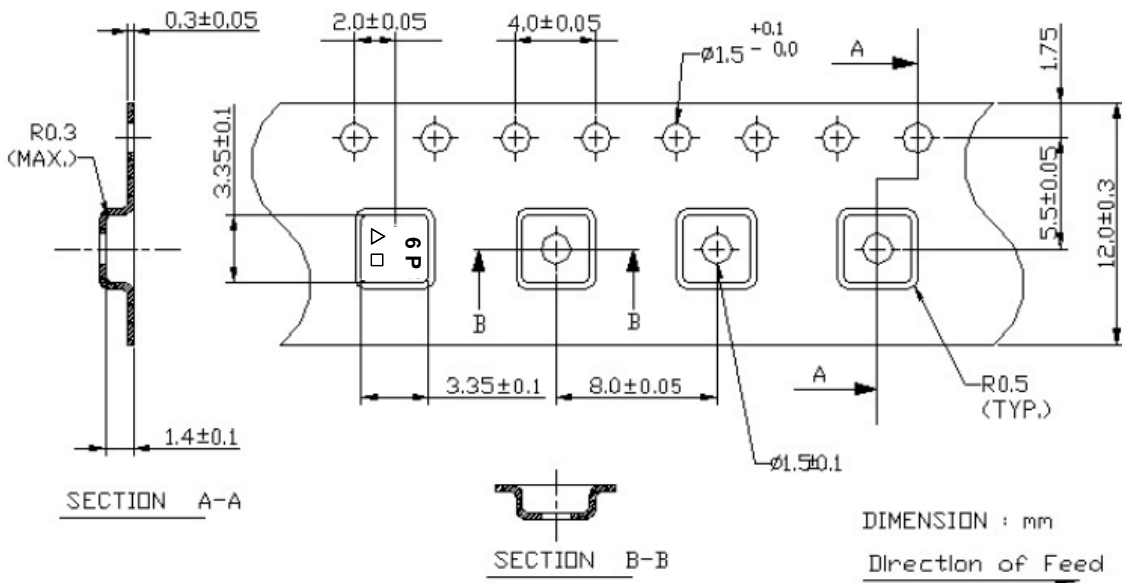
G. PACKING:

1. REEL DIMENSION

(Please refer to FR-75D10 for packing quantity)



2. TAPE DIMENSION



H. RECOMMENDED REFLOW PROFILE:

