

# TACT SWITCH

Operation: SMT/贴片卧式 微型 轻触开关 [操作力可定制]



LTEM NO.: TS-1806B-\*\*\* (Series)

(L4.70mm × W2.00mm TACT-SWITCH)

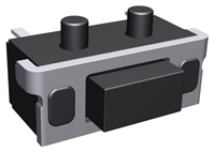
表面貼裝 SMT

側向操作 LATERAL

精密部品 NICETY

可靠 STABILIZE

適合環保 RoHS

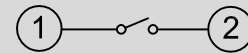


## Technical parameter

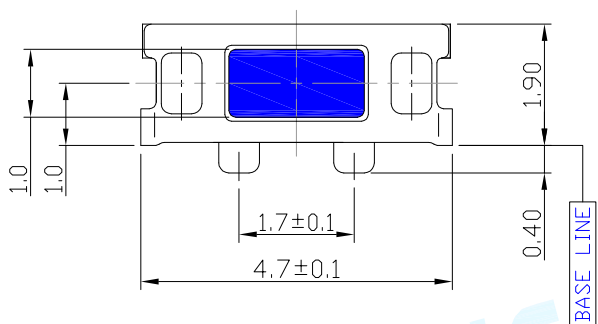
PROJECT	LEVEL	A[better product]	B[average product]
Electrical	Contact Rating	25mA, 24V DC	
Properties	Initial Contact Resistance	50mΩ max.	
	Insulation Resistance	100MΩ min.500V DC	Skey/PD: 100MΩ min.300V DC
Durable Performance	Withstand Voltage	300V AC for 1 minute	250 V AC for 1 minut
	There No Load	60,000 Cycles	40,000 Cycles
	Rated Load	50,000 Cycles	30,000 Cycles
	Storage temp.	-35°C~+75°C(Operating Temp: )	
	Operating Force	1.6 / 2.6N. (1N.=100gram-force)	
	Heat Rrsistance	IR Reflow:255°C, 5sec. Manual:350°C, 3sec.	

Material declaration		
No.	NAME	Description
① A	嵌件	C5191R-H (t=0.15mm)鍍銀磷銅
② B	基座	LCP 30%(Buff)耐高温塑胶 UL94V-0
③ C	簧片	覆银&不锈钢 SUS304 ×2
④ D	拨柄	LCP 30%(Gray)耐高温塑胶 UL94V-0
⑤ E	盖板	H62 鍍銀黃銅(t=0.20mm)

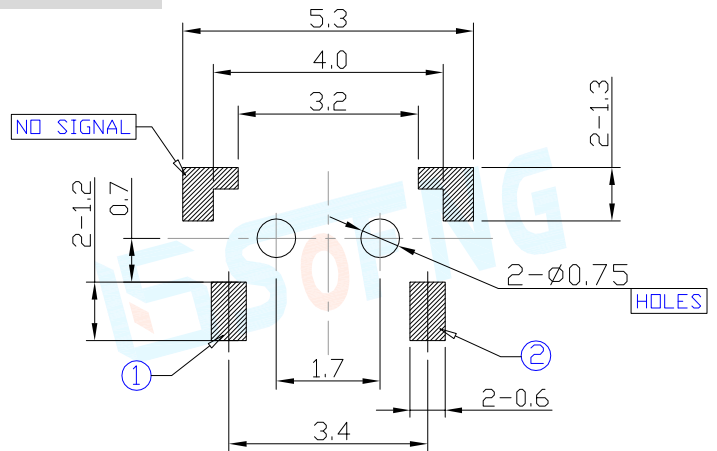
## CIRCUIT DIAGRAM



Unit:mm



## P.C.B LAYOUT



DECIMALS	ANGLES
.X :±0.15	X° :±1.5°
.XX :±0.10	.XX° :±1.0°
.XXX :±0.05	.XXX° :±0.5°

TRAVEL:0.15

