

**PLEASE CHECK WWW.MOLEX.COM FOR LATEST PART INFORMATION**

**Part Number:** [0009503191](#)  
**Status:** **Active**  
**Overview:** [kk](#)  
**Description:** 3.96mm (.156") Pitch KK® Crimp Terminal Housing, Friction Ramp, 19 Circuits

**Documents:**

[3D Model](#) [Product Specification PS-08-50 \(PDF\)](#)  
[Drawing \(PDF\)](#) [RoHS Certificate of Compliance \(PDF\)](#)

**Agency Certification**

CSA LR19980

**General**

Product Family Crimp Housings  
 Series [2139](#)  
 Overview [kk](#)  
 Product Name KK®

**Physical**

Circuits (maximum) 19  
 Color - Resin Natural  
 Flammability 94V-2  
 Gender Female  
 Glow-Wire Compliant No  
 Lock to Mating Part Yes  
 Material - Resin Nylon  
 Number of Rows 1  
 Packaging Type Bag  
 Panel Mount No  
 Pitch - Mating Interface (in) 0.156 In  
 Pitch - Mating Interface (mm) 3.96 mm  
 Temperature Range - Operating 0°C to +75°C

**Material Info**

Old Part Number 2139-19A

**Reference - Drawing Numbers**

Packaging Specification PK-2139-001  
 Product Specification PS-08-50  
 Sales Drawing SD-2139

**EU RoHS**  
**ELV and RoHS**  
**Compliant**  
**REACH SVHC**  
**Contains SVHC: No**  
**Halogen-Free**  
**Status**  
**Not Reviewed**

**China RoHS**



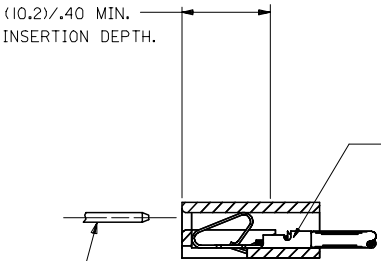
**Need more information on product environmental compliance?**

Email [productcompliance@molex.com](mailto:productcompliance@molex.com)  
 For a multiple part number RoHS Certificate of Compliance, [click here](#)

Please visit the [Contact Us](#) section for any non-product compliance questions.

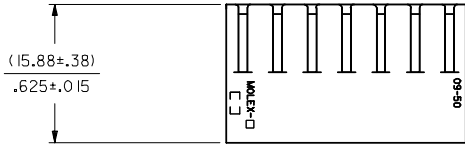
**Search Parts in this Series**  
[2139Series](#)

**Use With**  
 2478 Crimp Terminals for 18-24 AWG, [2578](#)  
 Crimp Terminals for 22-26 AWG



TERMINAL SHOWN FOR REF. ONLY

(1.14)±.045 SQ. OR ROUND PIN IS STANDARD. HOUSING WILL ACCEPT PIN SIZES FROM (.51)±.020 TO (1.57)±.062



OPTION CODE

| OPT. CODE | RAMP      | POL. RIB | EARS | MATERIAL      | ENGRAVING | PACKAGING     |
|-----------|-----------|----------|------|---------------|-----------|---------------|
| A         | STD. RAMP | NO       | NO   | NYLON 94V-2   | STD.      | PK-2139-001   |
| C         | NONE      | NO       | NO   | NYLON 94V-2   | STD.      | PK-2139-002   |
| G         | WIDE RAMP | NO       | NO   | NYLON 94V-2   | STD.      | PK-2139-001   |
| M         | STD. RAMP | NO       | NO   | NYLON 6 94V-2 | STD.      | TBD-INDIA     |
| N         | NONE      | NO       | NO   | NYLON 6 94V-2 | STD.      | TBD-INDIA     |
| P         | STD. RAMP | YES      | NO   | NYLON 94V-2   | STD.      | TBD SINGAPORE |

NO. OF CKT'S. 2 139-N \*\*\* - \*\*\* - \*\*\*

SELECTIVE RAMP LOC.  
 BLANK=NONE  
 AA=1ST. SEL. LOC.  
 AB=2ND. SEL. LOC., ETC.

VOID CODE  
 NO. CORRESPONDS TO CKT. NO. VOIDED.  
 MULT. VOIDS START WITH 51.

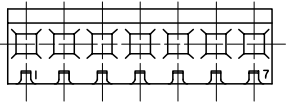
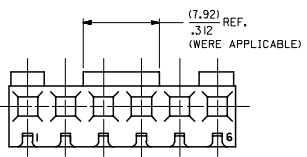
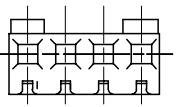
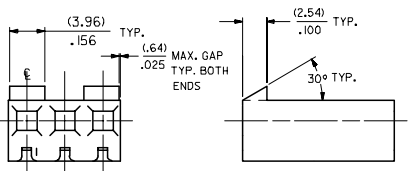
COLOR CODE  
 BLANK=NATURAL  
 GN=GREEN  
 YW=YELLOW  
 RD=RED  
 OR=ORNANGE  
 BU=BLUE  
 BK=BLACK

SEE NOTE 6

| DIM. A  | DIM. B      | NO. OF |
|---------|-------------|--------|
| (7.82)  | (3.96±.13)  | 2      |
| .308    | .156±.005   |        |
| (11.79) | (7.92±.13)  | 3      |
| .464    | .312±.005   |        |
| (15.75) | (11.89±.13) | 4      |
| .620    | .468±.005   |        |
| (19.71) | (15.85±.13) | 5      |
| .776    | .624±.005   |        |
| (23.67) | (19.81±.13) | 6      |
| .932    | .780±.005   |        |
| (27.64) | (23.77±.13) | 7      |
| 1.088   | .936±.005   |        |
| (31.60) | (27.74±.25) | 8      |
| 1.244   | 1.092±.010  |        |
| (35.56) | (31.70±.25) | 9      |
| 1.400   | 1.248±.010  |        |
| (39.52) | (35.66±.25) | 10     |
| 1.556   | 1.404±.010  |        |
| (43.48) | (39.62±.25) | 11     |
| 1.712   | 1.560±.010  |        |
| (47.45) | (43.59±.25) | 12     |
| 1.868   | 1.716±.010  |        |
| (51.41) | (47.55±.31) | 13     |
| 2.024   | 1.872±.012  |        |
| (55.37) | (51.51±.36) | 14     |
| 2.180   | 2.028±.014  |        |
| (59.33) | (55.47±.36) | 15     |
| 2.336   | 2.184±.014  |        |
| (63.30) | (59.44±.36) | 16     |
| 2.492   | 2.340±.014  |        |
| (67.26) | (63.40±.36) | 17     |
| 2.648   | 2.496±.014  |        |
| (71.22) | (67.36±.36) | 18     |
| 2.804   | 2.652±.014  |        |
| (75.18) | (71.32±.36) | 19     |
| 2.960   | 2.808±.014  |        |
| (79.15) | (75.29±.36) | 20     |
| 3.116   | 2.964±.014  |        |
| (83.11) | (79.25±.46) | 21     |
| 3.272   | 3.120±.018  |        |
| (87.07) | (83.21±.46) | 22     |
| 3.428   | 3.276±.018  |        |
| (91.03) | (87.17±.46) | 23     |
| 3.584   | 3.432±.018  |        |
| (95.00) | (91.14±.46) | 24     |
| 3.740   | 3.588±.018  |        |

- NOTES:
- MATERIAL: SEE LEGEND.
  - FINISH: N/A
  - PARTS CONFORM TO PRODUCT SPECIFICATION PS-08-50.
  - PACKAGING INFORMATION: SEE LEGEND
  - THIS HOUSING FOR USE WITH TERMINAL NO. 2478 (18 TO 24 GA) & 2578 (22 TO 26 GA), WITH (2.54)±.100 MAX. INSULATION DIA. HOUSING 41695 IS RECOMMENDED FOR OVER (2.54)±.100 DIA. INSULATION.
  - DIMENSIONS GIVEN ACROSS CENTERLINES ARE SYMMETRICAL ABOUT THOSE CENTERLINES WITHIN HALF THE TOTAL TOLERANCE.
  - FIRST CKT. NO. ON 1 THRU 5 CKT. HOUSINGS, FIRST AND LAST CKT. NO. ON 6 CKT HOUSING AND LARGER.
  - MAX BOW .005 MM/MM OR .005 IN/IN
  - 2139-NP-\* IS MANUFACTURED IN SINGAPORE ONLY.

|  |                               |  |  |  |   |                     |
|--|-------------------------------|--|--|--|---|---------------------|
| UPDATE PER ECN<br>ECN NO: UCP2006-0451<br>2005/11/09<br>DRAWN: JUNE<br>2005/12/12<br>CHECKED: JUNE<br>2005/12/12<br>APPROVED: JUNE<br>2005/12/12<br>APPROVED: JUNE<br>2005/12/12 | QUALITY SYMBOLS<br>▽=0<br>▽=0 | GENERAL TOLERANCES (UNLESS SPECIFIED)<br>mm INCH<br>2 PLACES ±.010 ±.010<br>3 PLACES ±.010 ±.010<br>2 PLACES ±0.25 ±.014<br>1 PLACE ±0.36 ±.014<br>ANGULAR ±1/2° | DIMENSION STYLE<br>MM/IN<br>DRAWN BY DATE<br>SAMIEC 1986/01/17<br>CHECKED BY DATE<br>PATEL 1986/01/17<br>APPROVED BY DATE<br>LENZ 1986/01/07 | SCALE<br>---<br>DESIGN UNITS<br>INCH<br>THIRD ANGLE PROJECTION | TITLE<br>CONNECTOR HOUSING<br>.156 CL CRIMP TERMINAL<br>2139 SERIES DWG.<br>MOLEX INCORPORATED                                | SHEET NO.<br>1 OF 4 |
|  |                               | DRAFT WHERE APPLICABLE MUST REMAIN WITHIN DIMENSIONS   | MATERIAL NO.<br>SEE CHART  | DOCUMENT NO.<br>SD-2139  | THIS DRAWING CONTAINS INFORMATION THAT IS PROPRIETARY TO MOLEX INCORPORATED AND SHOULD NOT BE USED WITHOUT WRITTEN PERMISSION |                     |



| NO. OF CKT'S. | STANDARD RAMP IS LOCATED ON % OF CKT. NOS. |
|---------------|--|
| 2             | ACROSS ENTIRE PART                         |
| 3             | 1,3  |
| 4             | 1,4  |
| 5             | 1,3,5                                      |
| 6             | 1,3,4,6                                    |
| 7             | ACROSS ENTIRE PART                         |
| 8             | 1,3,6,8                                    |
| 9             | ACROSS ENTIRE PART                         |
| 10            | 1,3,5,6,8,10                               |
| 11            | ACROSS ENTIRE PART                         |
| 12            | 1,3,5,8,10,12                              |
| 13            | 1,3,5,7,9,11,13                            |
| 14            | 1,3,5,7,8,10,12,14                         |
| 15            | 1,3,5,7,9,11,13,15                         |
| 16            | 1,3,5,7,10,12,14,16                        |
| 17            | 1,3,5,7,9,11,13,15,17                      |
| 18            | 1,3,5,7,9,10,12,14,16,18                   |
| 19            | 1,3,5,7,9,11,13,15,17,19                   |
| 20            | 1,3,5,7,9,12,14,16,18,20                   |
| 21            | 1,3,5,7,9,11,13,15,17,19,21                |
| 22            | 1,3,5,7,9,11,12,14,16,18,20,22             |
| 23            | 1,3,5,7,9,11,13,15,17,19,21,23             |
| 24            | 1,3,5,7,9,11,14,16,18,20,22,24             |

STD. RAMP OPTION  
SEE CHART FOR RAMP LOCATIONS.

| 2139-NA-*  |             |        | 2139-NC-*    |             |        |
|------------|-------------|--------|--------------|-------------|--------|
| ORDER NO.  | ENG. NO.    | VOIDS  | ORDER NO.    | ENG. NO.    | VOIDS  |
| 09-50-3021 | 2139-2A     |        | 09-50-7021   | 2139-2C     |        |
| 09-50-3031 | 2139-3A     |        | 09-50-7031   | 2139-3C     |        |
| 09-50-3041 | 2139-4A     |        | 09-50-7041   | 2139-4C     |        |
| 09-50-3051 | 2139-5A     |        | 09-50-7051   | 2139-5C     |        |
| 09-50-3061 | 2139-6A     |        | 09-50-7061   | 2139-6C     |        |
| 09-50-3071 | 2139-7A     |        | 09-50-7071   | 2139-7C     |        |
| 09-50-3081 | 2139-8A     |        | 09-50-7081   | 2139-8C     |        |
| 09-50-3091 | 2139-9A     |        | 09-50-7091   | 2139-9C     |        |
| 09-50-3101 | 2139-10A    |        | 09-50-7101   | 2139-10C    |        |
| 09-50-3111 | 2139-11A    |        | 09-50-7111   | 2139-11C    |        |
| 09-50-3121 | 2139-12A    |        | 09-50-7121   | 2139-12C    |        |
| 09-50-3131 | 2139-13A    |        | 09-50-7131   | 2139-13C    |        |
| 09-50-3141 | 2139-14A    |        | 09-50-7141   | 2139-14C    |        |
| 09-50-3151 | 2139-15A    |        | 09-50-7151   | 2139-15C    |        |
| 09-50-3161 | 2139-16A    |        | 09-50-7161   | 2139-16C    |        |
| 09-50-3171 | 2139-17A    |        | 09-50-7171   | 2139-17C    |        |
| 09-50-3181 | 2139-18A    |        | 09-50-7181   | 2139-18C    |        |
| 09-50-3191 | 2139-19A    |        | 09-50-7191   | 2139-19C    |        |
| 09-50-3201 | 2139-20A    |        | 09-50-7201   | 2139-20C    |        |
| 09-50-3211 | 2139-21A    |        | 09-50-7211   | 2139-21C    |        |
| 09-50-3221 | 2139-22A    |        | 09-50-7221   | 2139-22C    |        |
| 09-50-3231 | 2139-23A    |        | 09-50-7231   | 2139-23C    |        |
| 09-50-3241 | 2139-24A    |        | 09-50-7241   | 2139-24C    |        |
| 09-50-3036 | 2139-3A-2   | 2      | 09-50-7117   | 2139-11C-51 | 2,7,10 |
|            | 2139-10A-2  | 2      | 09-50-7166   | 2139-16C-2  | 2      |
|            | 2139-10A-51 | 2,5    | 09-50-7106   | 2139-10C-2  | 2      |
|            | 2139-7A-2   | 2      | 09-50-7107   | 2139-10C-51 | 2,5    |
|            | 2139-11A-51 | 2,7,10 | 09-50-7076   | 2139-7C-2   | 2      |
| 09-50-3163 | 2139-16A-2  | 2      |              | 2139-4C-3   | 3      |
| 09-50-3073 | 2139-10A-7  | 7      | T 09-50-7108 | 2139-10C-4  | 4      |
| 09-50-3083 | 2139-10A-8  | 8      | T 09-50-7109 | 2139-10C-5  | 5      |
| 09-50-3104 | 2139-10A-9  | 9      |              | 2139-5C-2   | 2      |
| 09-50-3162 | 2139-16A-51 | 2,15   | 09-50-3077   | 2139-7C-3   | 3      |
| 09-50-3092 | 2139-9A-51  | 2,6    | 09-50-3078   | 2139-7C-5   | 5      |
| 09-50-3075 | 2139-7A-51  | 1,7    | 09-50-7142   | 2139-14C-5  | 5      |
|            | 2139-7A-6   | 6      |              |             |        |
|            | 2139-5A-51  | 2,4    |              |             |        |
| 09-50-3047 | 2139-4A-3   | 3      |              |             |        |
|            | 2139-11A-2  | 2      |              |             |        |
| 09-50-3052 | 2139-5A-4   | 4      |              |             |        |
| 09-50-3076 | 2139-7A-52  | 4,7    |              |             |        |
| 09-50-3125 | 2139-12A-5  | 5      |              |             |        |
|            | 2139-7A-3   | 3      |              |             |        |
| 09-50-3053 | 2139-7A-5   | 5      |              |             |        |
|            | 2139-5A-2   | 2      |              |             |        |
| 09-50-3127 | 2139-12A-2  | 2      |              |             |        |
| 09-50-3143 | 2139-14A-2  | 2      |              |             |        |
| 09-50-3202 | 2139-20A-2  | 2      |              |             |        |
| S          | 2139-9A-4   | 4      |              |             |        |
| 09-50-3126 | 2139-12A-11 | 11     |              |             |        |
| 09-50-3142 | 2139-14A-13 | 13     |              |             |        |
| 09-50-3084 | 2139-8A-4   | 4      |              |             |        |
| 09-50-3037 | 2139-3A-3   | 3      |              |             |        |
| 09-50-3182 | 2139-18A-2  | 2      |              |             |        |
| 09-50-3157 | 2139-15A-2  | 2      |              |             |        |

|   |                                      |   |            |   |   |  |                      |                        |
|---|--------------------------------------|---|------------|---|---|--|----------------------|------------------------|
| <b>UPDATE TITLE BLOCK</b><br>DEC NO: UCP2006-0451<br>DRAWN: JUNE 2005/17/09<br>CHECKED: JUNE 2005/17/12<br>APPROVED: JUNE 2005/17/14<br>AFT | <b>QUALITY SYMBOLS</b><br>▽=0<br>▽=0 | <b>GENERAL TOLERANCES (UNLESS SPECIFIED)</b>  |            | <b>DIMENSION STYLE</b><br>MM/IN           |   | SCALE<br>---   | DESIGN UNITS<br>INCH | THIRD ANGLE PROJECTION |
|   |                                      | 4 PLACES ± --- ± ---<br>3 PLACES ± --- ± .010<br>2 PLACES ± 0.25 ± .014<br>1 PLACE ± 0.36 ± ---<br>ANGULAR ±1/2°              | mm<br>INCH | DRAWN BY<br>SAMIEC<br>DATE<br>1986/01/17  | CHECKED BY<br>PATEL<br>DATE<br>1986/01/17 | TITLE<br>CONNECTOR HOUSING FOR CRIMP TERMINAL 2139 SERIES DWG. |                      |                        |
|   |                                      | DRAFT WHERE APPLICABLE MUST REMAIN WITHIN DIMENSIONS  |            | APPROVED BY<br>LENZ<br>DATE<br>1986/01/17 | MATERIAL NO.<br>SEE CHART                 | DOCUMENT NO.<br>SD-2139  | SHEET NO.<br>2 OF 4  |                        |
|   |                                      | THIS DRAWING CONTAINS INFORMATION THAT IS PROPRIETARY TO MOLEX INCORPORATED AND SHOULD NOT BE USED WITHOUT WRITTEN PERMISSION |            |   |   |  |                      |                        |