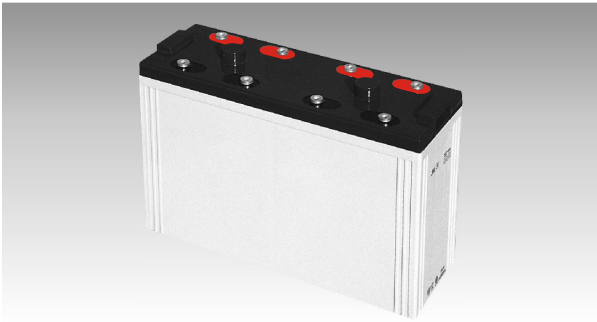
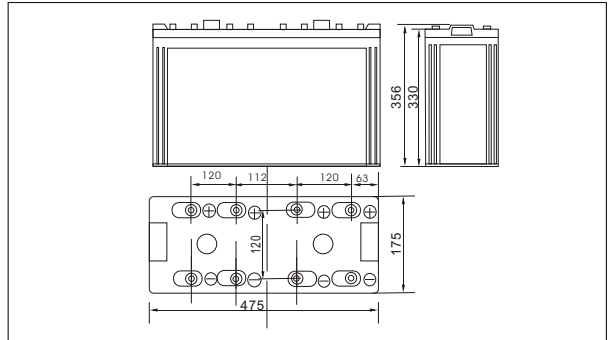




# SW210000(2V1000AH)



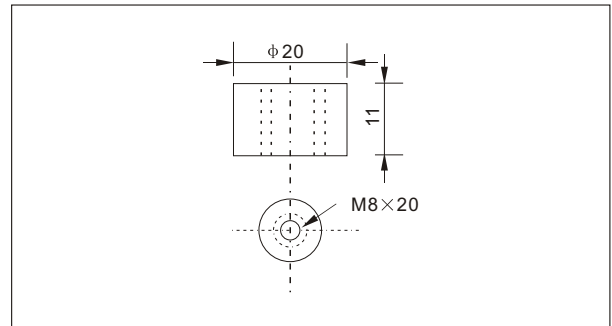
### Outer dimensions (mm)



### Specifications

Nominal Voltage		2 V
Rated capacity (10 hour rate)		1000 Ah
Dimensions	Total Height	356 mm (14.02 inches)
	Height	330 mm (12.99 inches)
	Length	475 mm (18.7 inches)
	Width	175 mm (6.89 inches)
Weight Approx		62.5 Kg (138 lbs)

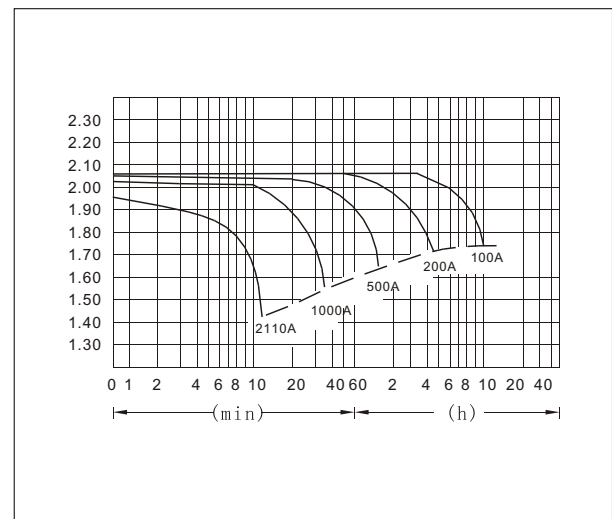
### Terminal Type (mm)



### Characteristics

Capacity 25°C(77°F)	10 hour rate(100 A) 5 hour rate(160A) 1 hour rate(600A)	1000 AH 800 AH 600 AH
Internal Resistance	Full charged Battery at 25°C(77°F)	Approx 0.22 mΩ
Capacity affected by Temperature (10hour rate)	40°C(104°F) 25°C(77°F) 0°C(32°F) -15°C(5°F)	102% 100% 85% 65%
Self-Discharge at 25°C(77°F)	Capacity after 3 month storage Capacity after 6 month storage Capacity after 12 month storage	91% 82% 64%
Terminal	T20	
Charge (constant Voltage)	Cycle	Initial Charging Current less than 400 A Voltage 2.35-2.40V
	Float	Voltage 2.25-2.30V

### Discharge Curves 25°C(77°F)



### Constant Current(Amp) and Constant Power(Watt) Discharge Table at 25°C(77°F)

Time		5min	10min	15min	30min	1h	2h	3h	4h	5h	8h	10h	20h
1.60V	A	3203	2110	1701	1140	600	350.0	257.0	200.0	165.0	117.0	105.0	57
	W	5509	3756	3040	2043	1080	641	476.7	375.0	312.7	223.5	202.1	110
1.70V	A	3102	1904	1602	1090	564	334.0	250.0	195.0	162.0	114.0	103.0	55.0
	W	5522	3543	2988	2039	1063	642	482.5	377.9	314.8	222.3	201.7	107.5
1.75V	A	3001	1703	1401	1020	546	326.0	244.0	192.0	160.0	113.0	101.0	55.0
	W	5462	3229	2665	1956	1054	630	473.8	374.4	312.6	221.5	199.2	108.4
1.80V	A	2892	1605	1302	940	528	318.0	238.0	189.0	156.0	110.0	100.0	54.0
	W	5408	3085	2500	1815	1024	621	467.7	372.0	307.3	217.3	198.1	107.2
1.85V	A	2795	1504	1202	840	510	310.0	230.0	184.0	152.0	107.0	95.0	51.0
	W	5283	2903	2332	1638	1000	611	455.4	365.2	302.3	213.6	191.1	103.0