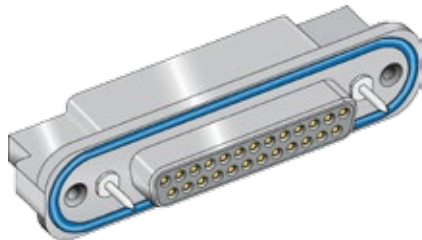


HiPer-D Standard and High-Density Connectors



280-021S panel mount socket connectors with O-ring mounting flange, crimp termination



Rear panel mount HiPer-D socket connectors feature crimp, rear-releaseable size #20 or #22 contacts and a flange O-ring for a watertight panel seal. Intermateable with standard M24308-type D-Subminiature connectors, the HiPer-D features a rugged machined aluminum shell and environmental sealing. #4-40 threaded mounting holes simplify panel attachment. Threaded holes on the rear of the connector allow attachment of HiPer-D EMI backshells. Contacts are packaged with connector. Terminate contacts with crimp tools purchased separately. Glass-reinforced thermoset epoxy insulators, copper alloy retention clips. Connector meets IP67 immersion requirement (mated) . 1000 VAC, 5 Amps (#22) or 7.5 Amps (#20).

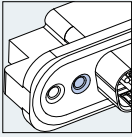
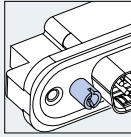
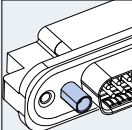
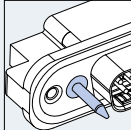
B

| Ordering Information | | | | |
|--------------------------------|--|------|----|---|
| Sample Part Number | 280-021S | 2H26 | Z2 | G |
| Basic Part Number | 280-021S | | | |
| Shell Size-Contact Arrangement | Contact Arrangements are shown in the adjacent table | | | |
| Shell Finish | ME = Electroless Nickel (RoHS) MT = Nickel-PTFE (RoHS) JF = Cadmium with Yellow Chromate Z2 = Gold (RoHS) Z1 = Passivated Stainless Steel (RoHS) | | | |
| Mating Hardware | N = No Hardware (supplied with #8-32 tapped holes) P = #4-40 Female Jackposts G = Male Guide Pins B = Female Guide Bushings | | | |

| Shell Size - Contact Arrangements | | |
|-----------------------------------|----------------------|-----|
| Shell Size-Contact Arr. | Contact Size and Qty | |
| | #20 | #22 |
| Standard Density | | |
| 1S9 | 9 | |
| 2S15 | 15 | |
| 3S25 | 25 | |
| 4S37 | 37 | |
| 5S50 | 50 | |
| High Density | | |
| 1H15 | | 15 |
| 2H26 | | 26 |
| 3H44 | | 44 |
| 4H62 | | 62 |
| 5H78 | | 78 |
| 6H104 | | 104 |

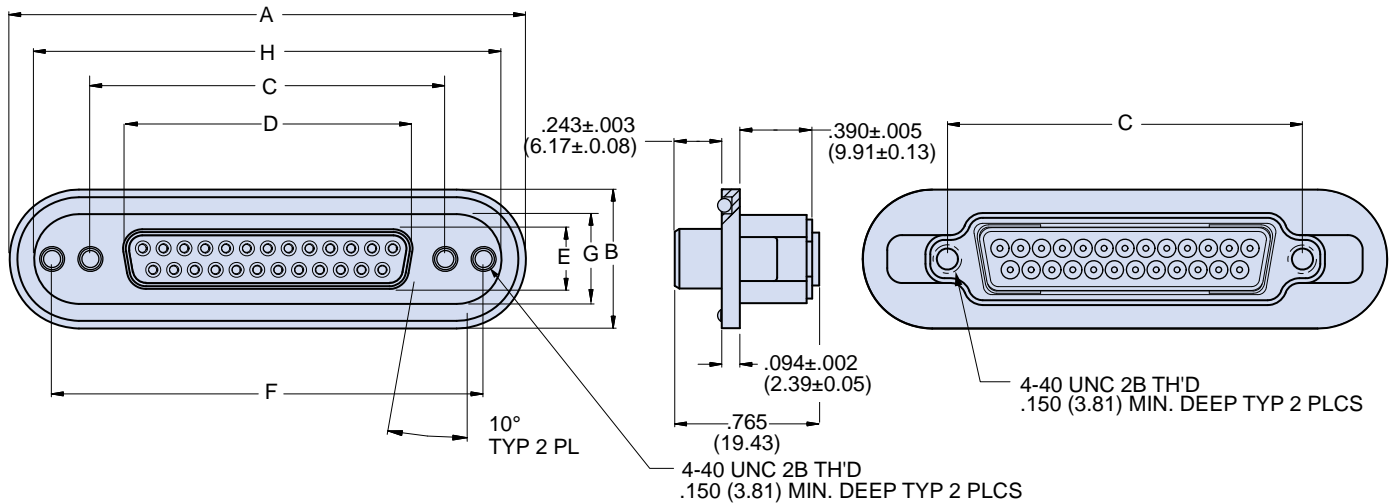
| Materials and Finishes | |
|------------------------|---------------------------------------|
| Shell | Aluminum alloy |
| Contacts | Copper alloy, 50 microin. gold plated |
| Insulators | Thermoset epoxy |
| Retention Clips | Copper alloy |
| O-ring, Grommet | Fluorosilicone rubber |
| Hardware | 300 series stainless steel |

| Specifications | |
|-----------------------|--------------------------|
| Current Rating | #22 5 AMPS, #20 7.5 AMPS |
| Test Voltage | 1000 VAC RMS |
| Insulation Resistance | 5000 megohms minimum |
| Operating Temperature | -65° C. to +200° C. |
| Ingress Protection | IP 67 |
| Shock | 300 g. |
| Vibration, Random | 43.92 g. |

| Mating Hardware | |
|--|---|
| N No Hardware #8-32 tapped hole  | P #4-40 Female Jackposts  |
| B Female Guide Bushings  | G Male Guide Pins  |

280-021S panel mount socket connectors with O-ring mounting flange, crimp termination

280-021S DIMENSIONS



| Shell Size | A | | B | | C Basic | | D | | E | | F Basic | | G | | H | |
|------------|-------|-------|------|-------|---------|-------|-------|-------|------|-------|---------|-------|------|-------|-------|-------|
| | in | mm | in | mm | in. | mm | in | mm | in | mm | in | mm | in | mm | in | mm |
| 1 | 1.865 | 47.37 | .725 | 18.42 | .984 | 24.99 | .643 | 16.33 | .311 | 7.90 | 1.424 | 36.17 | .469 | 11.91 | 1.609 | 40.87 |
| 2 | 2.200 | 55.88 | .725 | 18.42 | 1.312 | 33.32 | .971 | 24.66 | .311 | 7.90 | 1.752 | 44.50 | .469 | 11.91 | 1.944 | 49.38 |
| 3 | 2.736 | 69.49 | .725 | 18.42 | 1.852 | 47.04 | 1.511 | 38.38 | .311 | 7.90 | 2.292 | 58.22 | .469 | 11.91 | 2.480 | 62.99 |
| 4 | 3.385 | 85.98 | .725 | 18.42 | 2.500 | 63.50 | 2.159 | 54.84 | .311 | 7.90 | 2.940 | 74.68 | .469 | 11.91 | 3.129 | 79.48 |
| 5 | 3.289 | 83.54 | .837 | 21.26 | 2.406 | 61.11 | 2.064 | 52.43 | .423 | 10.74 | 2.846 | 72.29 | .581 | 14.76 | 3.033 | 77.04 |
| 6 | 3.383 | 85.93 | .899 | 22.83 | 2.500 | 63.50 | 2.189 | 55.60 | .485 | 12.32 | 2.940 | 74.68 | .643 | 16.33 | 3.127 | 79.43 |

NOTES

- HiPer-D connectors are available with a wide variety of materials and finishes. See [About Series 28 HiPer-D Shell Plating Options](#) for additional choices. Glenair offers the industry's widest selection of plating and material choices with no setup charge, no minimum order quantity and no schedule impact.
- For panel cutout dimensions, refer to [Panel Cutouts and Printed Circuit Board Footprints](#).
- Connectors are supplied with crimp contacts per M39029. Contacts are not installed. Refer to [HiPer-D Contacts and Crimp Tools](#) for contact part numbers, specifications, crimp tool information, and insertion/extraction tools.
- HiPer-D connectors meet the requirements of MIL-DTL-24308 and are intermateable with standard M24308-type D-Subminiature connectors with corresponding contact arrangements and type.
- Additional electrical, mechanical and environmental specifications are listed in [HiPer-D Product Specification](#).