

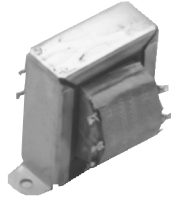
POWER TRANSFORMERS

Single Secondary

Style A



Style S



Style NV



Style C



All Primaries 50/60 Hz.

Sec.	STANCOR PART NUMBER	Primary Volts	Secondary		Style	Insulation Test RMS Volts	Termination		DIMENSIONS-INCHES				Weight (lbs.)	Agency Certification	
									Volts	Amps.	H	Case W			D
A	P-8629	117	2.5	1.0	A	1500	Leads	Leads	1.38	2.38	1.38	2.00	-	0.4	-
	P-6133	117	2.5 C.T.	5.0	S	7500	Leads	Leads	2.75	3.13	2.00	2.81	-	1.5	-
	P-6454	117/107	2.5 C.T.	10.0	S	7500	Leads	Leads	3.25	3.63	1.88	3.13	-	2.5	-
	P-6467	117	5.0 C.T.	3.0	A	2500	Leads	Leads	2.00	3.25	2.13	2.81	-	1.4	-
B	P-6135	117	5.0 C.T.	10.0	NV	2500	Leads	Leads	3.13	2.50	2.50	2.00	2.06	3.0	-
	P-8385	117	6.3 C.T.	0.3	A	1500	Leads	Leads	1.25	2.13	1.38	1.75	-	0.3	-
	P-6465	117	6.3 C.T.	0.6	A	1500	Leads	Leads	1.38	2.38	1.50	2.00	-	0.4	UL
	P-8705	230	6.3 C.T.	0.6	A	1500	Leads	Leads	1.38	2.38	1.50	2.00	-	0.4	-
C	P-8389	117	6.3	1.0	A	1500	Leads	Leads	1.75	2.88	1.63	2.38	-	0.6	UL
	P-6134	117	6.3 C.T.	1.2	A	3000	Leads	Leads	1.75	2.88	1.88	2.38	-	0.8	UL
	P-8190	117	6.3	1.2	A	5000	Leads	Leads	2.00	3.25	1.88	2.81	-	1.0	-
	P-6466	117	6.3 C.T.	3.0	A	2500	Leads	Leads	2.00	3.25	2.13	2.81	-	1.4	-
D	P-8648	117	6.3 C.T.	4.0	A	1500	Leads	Leads	2.38	3.75	2.13	3.13	-	1.6	-
	P-6456	117/107	6.3 C.T.	6.0	A	2000	Leads	Leads	2.38	3.75	2.38	3.13	-	2.0	-
	P-8651	117	6.3 C.T.	8.0	A	1500	Leads	Leads	2.63	4.00	2.63	3.56	-	2.4	-
	P-6464	117	6.3 C.T.	10.0	C	2000	Leads	Leads	3.50	2.81	3.25	2.25	2.00	3.5	-
E	P-6308	117/107	6.3 C.T.	10.0	NV	2500	Leads	Leads	3.50	2.81	2.63	2.25	2.00	3.4	-
	P-6309†	117/107	6.3 C.T.	20.0	NV	2500	Leads	Leads	4.69	3.75	3.50	3.00	2.47	6.7	-
	P-5015	117	7.5 C.T.	4.0	NV	2500	Lugs	Lugs	3.13	2.50	2.25	2.00	2.13	2.7	-
	P-6138	117	7.5 C.T.	8.0	NV	2500	Leads	Leads	3.88	3.13	3.38	2.50	2.22	4.7	-
F	P-8652	117	10.0 C.T.	1.0	A	1500	Leads	Leads	2.00	3.25	2.00	2.81	-	0.9	-
	P-8653	117	10.0 C.T.	2.0	A	1500	Leads	Leads	2.00	3.25	2.00	2.81	-	1.3	-
	P-8380	117	10.0 C.T.	3.0	A	1500	Leads	Leads	2.25	3.75	2.25	3.13	-	1.6	-
	P-5016	117	10.0 C.T.	4.0	NV	2500	Lugs	Lugs	3.44	2.81	2.50	2.25	2.00	3.3	-
G	P-8655	117	10.0 C.T.	6.00	NV	1500	Leads	Leads	3.13	2.50	2.63	2.00	2.06	3.10	-
	P-8656	117	10.0 C.T.	8.00	NV	1500	Leads	Leads	3.50	2.81	3.00	2.25	2.28	4.10	-
	P-8390	117	12.0	0.15	A	1500	Leads	Leads	1.25	2.13	1.25	1.75	-	0.25	UL
	P-8391	117	12.0	0.35	A	1500	Leads	Leads	1.38	2.38	1.38	2.00	-	0.35	-
H	P-8392	117	12.0	0.70	A	1500	Leads	Leads	1.75	2.88	1.63	2.38	-	0.60	UL
	P-8393	117	12.0	1.20	A	1500	Leads	Leads	2.00	3.25	1.63	2.81	-	0.85	-
	P-8657	117	12.0	2.00	A	1500	Leads	Leads	2.00	3.25	2.13	2.81	-	1.30	-
	P-8658	117	12.0	4.00	A	1500	Leads	Leads	2.63	4.00	2.25	3.56	-	2.30	-
I	P-8659	117	12.0	6.00	NV	1500	Leads	Leads	3.50	2.88	2.63	2.25	2.13	3.40	-
	P-8660	117	12.0	8.00	NV	1500	Leads	Leads	3.88	3.18	2.75	2.50	2.13	4.30	-
	P-8384	117	12.6 C.T.	1.00	A	1500	Leads	Leads	2.00	3.25	1.75	2.81	-	0.90	-
	P-8550	117	12.6 C.T.	1.50	A	1500	Leads	Leads	2.00	3.25	2.00	2.81	-	1.30	-

† Electrostatic shield

For outline drawings refer to page 12.

* Agency Certification Note: UL Recognized (File E68100, Guide #XPTQ2)

POWER TRANSFORMERS

Single Secondary

Style A



Style NV



Style C



All Primaries 50/60 Hz.

Sec.	STANCOR PART NUMBER	Primary Volts	Secondary Volts	Amps.	Style	Insulation Test RMS Volts	Termination Pri.	Termination Sec.	DIMENSIONS-INCHES					Weight (lbs.)	Agency Certification
									H	Case W	D	Mounting MW	MD		
A	P-8130	117	12.6 C.T.	2.00	A	1500	Leads	Leads	2.00	3.25	2.13	2.81	-	1.40	
	P-8715	230	12.6 C.T.	2.00	A	1500	Leads	Leads	2.00	3.25	2.13	2.81	-	1.40	-
	P-8358	117	12.6 C.T.	3.00	A	1500	Leads	Leads	2.38	3.75	2.25	3.13	-	1.60	-
	P-8641	117	12.6 C.T.	4.00	A	1500	Leads	Leads	2.62	4.00	2.38	3.56	-	2.30	-
B	P-8644	117	12.6 C.T.	10.0	C	1500	Leads	Leads	4.25	3.44	3.38	2.75	2.69	6.30	-
	P-8553	115	14.0 C.T.	0.25	A	1500	Leads	Leads	1.38	2.38	1.44	2.00	-	0.40	-
	P-8555	115	14.0 C.T.	1.00	A	1500	Leads	Leads	2.00	3.25	1.75	2.81	-	1.20	-
	P-8557	115	14.0 C.T.	4.00	NV	1500	Leads	Leads	3.00	2.56	2.44	2.00	2.25	3.00	-
C	P-8558	115	14.0 C.T.	6.00	NV	1500	Leads	Leads	3.50	2.81	2.88	2.25	2.38	4.00	-
	P-8691	115	18.0 C.T.	1.00	A	1500	Leads	Leads	2.00	3.31	2.13	2.81	-	1.50	-
	P-8692	115	18.0 C.T.	1.50	A	1500	Leads	Leads	2.38	3.75	2.13	3.13	-	1.70	-
	P-8693	115	18.0 C.T.	2.00	A	1500	Leads	Leads	2.38	3.75	2.25	3.13	-	2.00	-
D	P-8504	115/230	20.0 C.T.	0.25	A	2500	Leads	Leads	1.44	2.38	1.38	2.00	-	0.40	-
	P-8505	115/230	20.0 C.T.	0.30	A	2500	Leads	Leads	1.44	2.38	1.38	2.00	-	0.60	-
	P-8507	115/230	20.0 C.T.	0.50	A	2500	Leads	Leads	1.75	2.88	1.63	2.38	-	0.80	-
	P-8508	115/230	20.0 C.T.	1.00	A	2500	Leads	Leads	2.00	3.25	2.25	2.81	-	1.40	-
E	P-8604	117	20.0 C.T.	1.00	A	1500	Leads	Leads	2.00	3.25	2.13	2.81	-	1.40	
	P-8559	115	20.0 C.T.	2.00	A	1500	Leads	Leads	2.56	4.00	2.25	3.56	-	2.50	-
	P-8560	115	20.0 C.T.	4.00	NV	1500	Leads	Leads	3.50	2.81	3.06	2.25	2.06	4.00	-
	P-8551	115	24.0	1.00	A	1500	Leads	Leads	1.94	3.25	2.13	2.81	-	1.40	-
F	P-8694	115	24.0	2.00	A	1500	Leads	Leads	2.63	4.00	2.00	3.56	-	2.30	-
	P-8394	117	24.0 C.T.	0.085	A	1500	Leads	Leads	1.25	2.13	1.25	1.75	-	0.25	-
	P-8395	117	24.0 C.T.	0.20	A	1500	Leads	Leads	1.38	2.38	1.38	2.00	-	0.35	
	P-8721	230	24.0 C.T.	0.20	A	1500	Leads	Leads	1.38	2.38	1.38	2.00	-	0.35	-
G	P-8578	115/230	24.0 C.T.	0.20	A	1500	Leads	Leads	1.38	2.38	1.50	2.00	-	0.30	-
	P-8396	117	24.0 C.T.	0.40	A	1500	Leads	Leads	1.75	2.88	1.63	2.38	-	0.60	
	P-8722	230	24.0 C.T.	0.40	A	1500	Leads	Leads	1.75	2.88	1.63	2.38	-	0.60	-
	P-8397	117	24.0 C.T.	0.70	A	1500	Leads	Leads	2.00	3.25	1.75	2.81	-	0.85	
H	P-8723	230	24.0 C.T.	0.70	A	1500	Leads	Leads	2.00	3.25	1.75	2.81	-	0.85	-
	P-8661	117	24.0 C.T.	1.00	A	1500	Leads	Leads	2.00	3.25	2.06	2.81	-	1.40	
	P-8575	115/230	24.0 C.T.	1.00	A	1500	Leads	Leads	2.00	3.25	2.06	2.81	-	1.30	
	P-8662	117	24.0 C.T.	2.00	A	1500	Leads	Leads	2.62	4.00	2.38	3.56	-	2.30	-
I	P-8663	117	24.0 C.T.	4.00	NV	1500	Leads	Leads	3.88	3.19	2.81	2.50	2.13	4.00	
	P-8664	117	24.0 C.T.	6.00	NV	1500	Leads	Leads	4.19	3.44	3.00	2.75	2.25	5.70	-
	P-8665	117	24.0 C.T.	8.00	NV	1500	Leads	Leads	4.19	3.44	3.38	2.75	2.75	7.30	-
	P-8695	115	24.0 C.T.	10.0	NV	1500	Leads	Leads	4.31	3.44	3.50	2.75	3.13	8.00	-

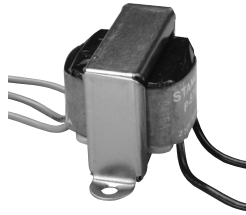
* Agency Certification Note: UL Recognized (File E68100, Guide #XPTQ2)

For outline drawings refer to page 12.

POWER TRANSFORMERS

Single Secondary

Style A



Style NV



Style C



All Primaries 50/60 Hz.

Sec.	STANCOR PART NUMBER	Primary Volts	Secondary Volts Amps.		Style	Insulation Test RMS Volts	Termination Pri. Sec.		DIMENSIONS-INCHES				Weight (lbs.)	Agency-Certification	
									H	Case W	D	Mounting MW MD			
A	P-8666	117	24.0 C.T.	12.0	NV	1500	Leads	Leads	4.63	3.75	4.63	3.00	3.19	11.2	RU
	P-6469	117	25.2	1.00	A	1500	Leads	Leads	2.00	3.25	2.13	2.81	-	1.40	-
	P-8707	230	25.2	1.00	A	1500	Leads	Leads	2.00	3.25	2.13	2.81	-	1.40	-
	P-8180	117	25.2 C.T.	1.00	A	1500	Leads	Leads	2.00	3.25	2.25	2.81	-	1.40	-
B	P-8357	117	25.2 C.T.	2.00	A	1500	Leads	Leads	2.63	4.00	2.25	3.56	-	2.20	RU
	P-8574	115/230	25.2 C.T.	2.00	A	1500	Leads	Leads	2.63	4.00	2.25	3.56	-	2.20	RU us
	P-8388	117	25.2 C.T.	2.80	A	1500	Leads	Leads	2.63	4.00	2.25	3.56	-	2.20	-
	P-8607‡	117	26.0 C.T.	0.25	A	2500	Leads	Leads	1.75	2.88	1.75	2.38	-	0.70	-
C	P-8609	117	26.8 C.T.	1.00	A	1500	Leads	Leads	2.00	3.25	2.13	2.81	-	1.30	-
	P-8601	117	28.0 C.T.	0.175	A	1500	Leads	Leads	1.38	2.38	1.50	2.00	-	0.35	-
	P-8602	117	28.0 C.T.	0.30	A	1500	Leads	Leads	1.75	2.88	1.63	2.38	-	0.60	-
	P-8667	117	28.0 C.T.	1.00	A	1500	Leads	Leads	2.00	3.25	2.13	2.81	-	1.40	-
D	P-8668	117	28.0 C.T.	2.00	NV	1500	Leads	Leads	3.13	2.50	2.50	2.00	2.19	2.90	-
	P-8669	117	28.0 C.T.	4.00	NV	1500	Leads	Leads	3.88	3.19	3.25	2.50	2.50	5.30	-
	P-8670	117	28.0 C.T.	6.00	NV	1500	Leads	Leads	4.25	3.44	3.50	2.75	2.63	7.00	-
	P-8611	117	36.0 C.T.	0.135	A	1500	Leads	Leads	1.38	2.38	1.38	2.00	-	0.35	-
E	P-8612	117	36.0 C.T.	0.30	A	1500	Leads	Leads	1.75	2.88	1.63	2.38	-	0.60	-
	P-8613	117	36.0 C.T.	0.55	A	1500	Leads	Leads	2.00	3.25	1.88	2.81	-	1.00	-
	P-8671	117	36.0 C.T.	1.00	A	1500	Leads	Leads	2.38	3.75	2.25	3.13	-	2.00	-
	P-8672	117	36.0 C.T.	2.00	NV	1500	Leads	Leads	3.50	2.81	2.75	2.25	2.13	3.50	-
F	P-8673	117	36.0 C.T.	4.00	NV	1500	Leads	Leads	4.19	3.50	2.88	2.75	2.38	6.00	-
	P-8674	117	36.0 C.T.	6.00	NV	1500	Leads	Leads	4.25	3.75	3.06	3.00	2.47	8.30	-
	P-8542	115/230	40.0 C.T.	0.25	A	2500	Leads	Leads	1.75	2.88	1.63	2.38	-	0.80	-
	P-8566	115	40.0 C.T.	4.00	NV	1500	Leads	Leads	3.81	3.19	3.50	2.50	2.88	6.40	-
P-8605‡‡	117	48.0 C.T.	1.00	A	2500	Leads	Leads	2.63	4.00	2.38	3.56	-	2.30	-	

‡ Primary Tapped to Provide Secondary Voltages of 24.5 C.T., 27.5 C.T. or 29.0 C.T.

‡‡ Primary Tapped to Provide Secondary Voltages of 45 C.T., 48 C.T. 51 C.T. or 54 C.T.

* Agency Certification Note: UL Recognized (File E68100, Guide #XPTQ2)

For outline drawings refer to page 12.

Single Primary, Dual Secondary

Sec.	STANCOR PART NUMBER	Primary Volts	Secondary Volts Amps		Style	Insulation Test RMS Volts	Termination Primary Secondary		DIMENSIONS-INCHES				Weight (lbs.)	Agency Certif.	
									H	Case W	D	Mounting MW MD			
G	P-8684**	115	18.0 C.T.	1.00	NH	1500	Lugs	Lugs	2.56	3.00	2.50	2.50	2.00	2.3	-
			18.0 C.T.	1.00											

** For 60 Hz. only

For outline drawings refer to page 12.