

4

3

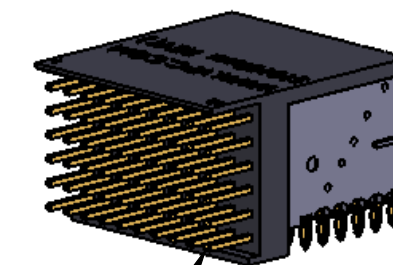
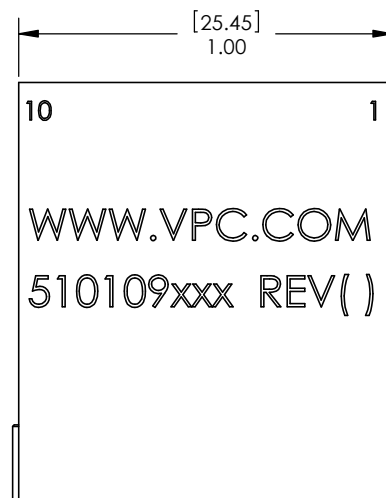
2

1

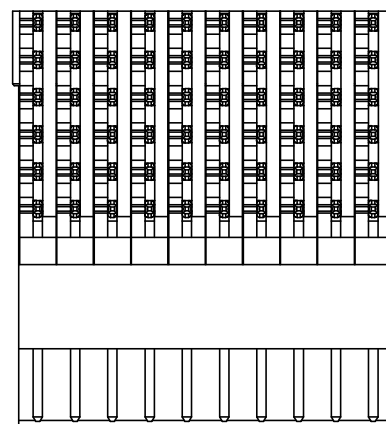
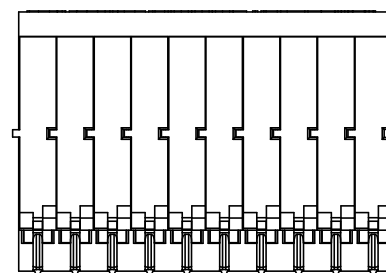
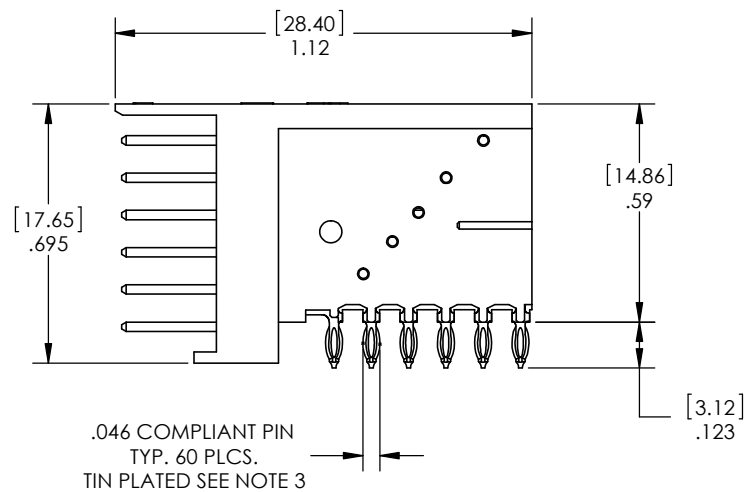
DO NOT SCALE DRAWING

THE INFORMATION CONTAINED HEREIN IS THE EXCLUSIVE PROPERTY OF VIRGINIA PANEL CORPORATION AND IS SUBMITTED FOR USE BY THE CUSTOMER ONLY. THE DATA SHALL NOT BE DUPLICATED, USED, OR DISCLOSED IN WHOLE OR IN PART FOR ANY PURPOSE OTHER THAN TO MAINTAIN THE EQUIPMENT PROVIDED. CONSULT WITH VIRGINIA PANEL CORPORATION ENGINEERING IF MORE DETAIL IS REQUIRED.

REVISIONS			
REV	DESCRIPTION	DATE	ENGR
B	ECN #5477	9/9/2014	J SHAND



CONTACT PINS
.025 [0.64] SQ. POSTS
GOLD PLATED
SEE NOTE 3



- 6. SEE SHEET 2 FOR NOTE.
 - 5. SEE SHEET 2 FOR NOTE.
 - 4. CONTINUOUS MAX. CARRY CURRENT 5 AMPS
 - 3. HEADER CONTACT PINS PLATED 30 MIN. MICROINCHES OF GOLD OVER 100 MIN. MICROINCHES OF NICKEL. THE COMPLIANT PINS PLATED 100-200 MICROINCHES OF TIN OVER 50 MIN. MICROINCHES OF NICKEL
 - 2. BAG (1) M2 X 8 PAN HEAD PHILLIPS SCREW TO BE INCLUDED WITH HEADER
 - 1. FOR APPLICATION USE & CARE INFORMATION CONSULT VPC USERS GUIDE @WWW.VPC.COM
- NOTES:

CUSTOMER DRAWING			
VIRGINIA PANEL CORPORATION <small>WWW.VPC.COM</small>			
MODULE HDR 60 POSITION RT ANG COMP PIN			
DIMENSIONS ARE SHOWN AS: [MILLIMETERS] INCHES	SIZE C	CAGE CODE 18117	DWG. NO. 510109206
	SCALE: 3:1	DATE 7/12/11	REV B
		SHEET	1 OF 2

4

3

2

1

