

Technical requirement

技术要求

Service conditions: - 40 °C ~ 55 °C

使用条件:-40°C~55°C

Rated load: DC 30V 0.5A

额定负荷:DC 30V 0.5A

Contact resistance: ≤ 0.03 Ω

接触电阻:≤0.03Ω

Insulation resistance: ≥ 100m Ω dc250v

绝缘电阻:≥100MΩ DC250V

Withstand voltage: AC 500V (50Hz) / min

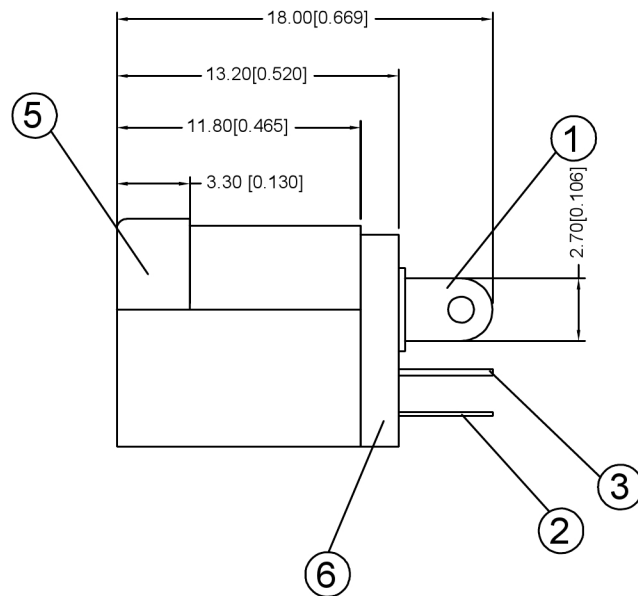
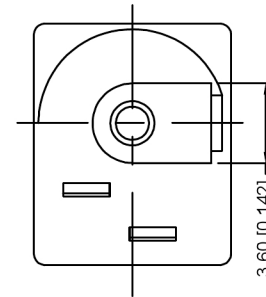
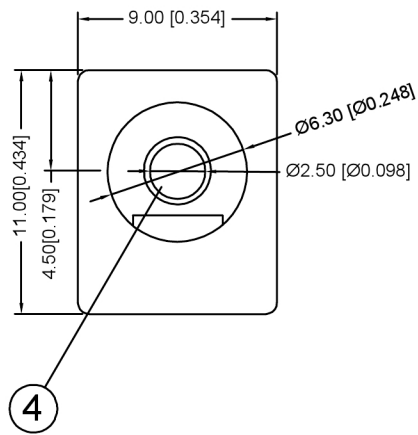
耐压:AC 500V(50Hz)/min

Plugging force: 3 ~ 20n

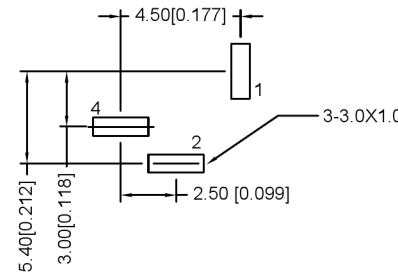
插拔力:3~20N

Mechanical life: 5000 times

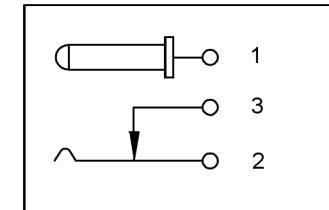
机械寿命:5000次



线路板按照尺寸示意图



电路结构示意图



6	Cover plate	1PCS	PA 66	BLACK
5	Pedestal	1PCS	PA 66 (BLACK)	
4	Pin	1PCS	Brass	NI
3	Static contact piece	1PCS	Brass	SN
2	Moving contact piece	1PCS	Spcc	SN
1	Pin pin	1PCS	Brass	SN
ITEM	NAME	PCS	Material Science	Remarks

广东星坤科技股份有限公司

DATE	REVISIONS	DATE	REVISED	APPROVED	UNSPECIFIED TOLERANCES
日期					
文件工程章					

DSND	SCALE: N/A	MODEL TYPE:
DWN	VIEW:	PART NO.: DC-012-2.5A-2.5
CHKD	UNIT: mm/in	DWG NO.:
APPD	SIZE: A4	
XKB INDUSTRIAL PRECISION CO.,LIMITED		WEIGHT
		SHEET 1/1
		REVISIC A0

