



SAW Components

Data Sheet X 7255 D





SAW Components

X 7255 D

Bandpass Filter

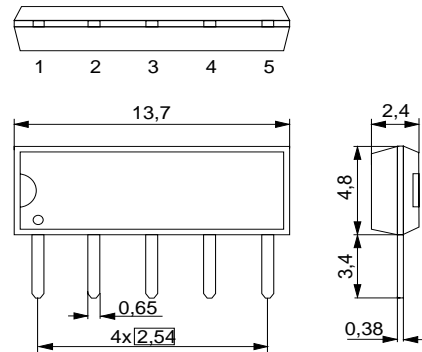
36,00 MHz

Data Sheet

Duroplast package **SIP5D**

Features

- IF filter for digital TV
- Switchable between two bandwidths
- Optimized for cascade of two devices
- Standard IC package



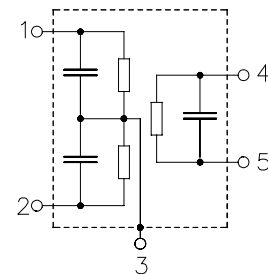
Terminals

- Tinned CuFe alloy

Dimensions in mm, approx. weight 0,5 g

Pin configuration

- 1 Input
- 2 Switching input
- 3 Chip carrier – ground
- 4 Output
- 5 Output



Type	Ordering code	Marking and package according to	Packing according to
X 7255 D	B39360-X7255-N201	C61157-A1-A21	F61074-V8049-Z000

Maximum ratings

Operable temperature range	T_A	-25/+65	°C	
Storage temperature range	T_{stg}	-40/+85	°C	
DC voltage	V_{DC}	5	V	between any terminals
AC voltage	V_{pp}	10	V	between any terminals


SAW Components
X 7255 D
Bandpass Filter
36,00 MHz
Data Sheet
Characteristics of channel 1 (switching pin 2 connected to ground)

Reference temperature: $T_A = 25\text{ °C}$
 Terminating source impedance: $Z_S = 50\ \Omega$
 Terminating load impedance: $Z_L = 2\text{ k}\Omega \parallel 3\text{ pF}$

		min.	typ.	max.	
Insertion attenuation					
	α				
Reference level for the following data	36,00 MHz	18,9	20,4	21,9	dB
Pass bandwidth					
$\alpha_{rel} \leq 1,5\text{ dB}$	$B_{1,5dB}$	—	7,1	—	MHz
$\alpha_{rel} \leq 3\text{ dB}$	B_{3dB}	—	7,4	—	MHz
$\alpha_{rel} \leq 15\text{ dB}$	B_{15dB}	—	8,4	—	MHz
$\alpha_{rel} \leq 30\text{ dB}$	B_{30dB}	—	8,8	—	MHz
Relative attenuation					
	α_{rel}				
Adjacent picture carrier	30,75 MHz	36,0	41,0	—	dB
Adjacent sound carrier	40,25 MHz	14,0	18,0	—	dB
	40,75 MHz	36,0	50,0	—	dB
	41,00 MHz	32,0	44,0	—	dB
	41,25 MHz	36,0	51,0	—	dB
Lower sidelobe	25,00 ... 31,30 MHz	32,0	37,0	—	dB
Upper sidelobe	40,70 ... 45,00 MHz	33,0	38,0	—	dB
Reflected wave signal suppression					
1,2 μ s ... 6,0 μ s after main pulse (test pulse 250 ns, carrier frequency 36,00 MHz)		40,0	48,0	—	dB
Feedthrough signal suppression					
1,3 μ s ... 1,2 μ s before main pulse (test pulse 250 ns, carrier frequency 36,00 MHz)		—	56,0	—	dB
Group delay ripple (p-p)					
	$\Delta\tau$				
	32,40 ... 39,60 MHz	—	50	—	ns
Impedance at 36,00 MHz					
	Input: $Z_{IN} = R_{IN} \parallel C_{IN}$	—	1,7 \parallel 18,1	—	k Ω \parallel pF
	Output: $Z_{OUT} = R_{OUT} \parallel C_{OUT}$	—	2,0 \parallel 4,8	—	k Ω \parallel pF
Temperature coefficient of frequency					
	TC_f	—	-72	—	ppm/K



SAW Components	X 7255 D
Bandpass Filter	36,00 MHz

Data Sheet

Characteristics of channel 2 (switching pin 2 connected to pin 1)

Reference temperature: $T_A = 25\text{ }^\circ\text{C}$
 Terminating source impedance: $Z_S = 50\ \Omega$
 Terminating load impedance: $Z_L = 2\ \text{k}\Omega \parallel 3\ \text{pF}$

		min.	typ.	max.	
Insertion attenuation	α				
Reference level for the following data	36,00 MHz	19,4	20,9	22,4	dB
Pass bandwidth					
$\alpha_{\text{rel}} \leq 1,5\ \text{dB}$	$B_{1,5\text{dB}}$	—	6,2	—	MHz
$\alpha_{\text{rel}} \leq 3\ \text{dB}$	$B_{3\text{dB}}$	—	6,4	—	MHz
$\alpha_{\text{rel}} \leq 15\ \text{dB}$	$B_{15\text{dB}}$	—	7,4	—	MHz
$\alpha_{\text{rel}} \leq 30\ \text{dB}$	$B_{30\text{dB}}$	—	7,8	—	MHz
Relative attenuation	α_{rel}				
Adjacent picture carrier	31,42 MHz	35,0	42,0	—	dB
Adjacent sound carrier	39,67 MHz	11,0	15,0	—	dB
	39,92 MHz	24,0	30,0	—	dB
Lower sidelobe	25,00 ... 31,80 MHz	34,0	40,0	—	dB
Upper sidelobe	40,20 ... 45,00 MHz	32,0	37,0	—	dB
Reflected wave signal suppression					
1,2 μs ... 6,0 μs after main pulse (test pulse 250 ns, carrier frequency 36,00 MHz)		40,0	50,0	—	dB
Feedthrough signal suppression					
1,3 μs ... 1,2 μs before main pulse (test pulse 250 ns, carrier frequency 36,00 MHz)		—	50,0	—	dB
Group delay ripple (p-p)	$\Delta\tau$				
32,90 ... 39,10 MHz		—	50	—	ns
Impedance at 36,00 MHz					
Input: $Z_{\text{IN}} = R_{\text{IN}} \parallel C_{\text{IN}}$		—	1,9 \parallel 20,3	—	$\text{k}\Omega \parallel \text{pF}$
Output: $Z_{\text{OUT}} = R_{\text{OUT}} \parallel C_{\text{OUT}}$		—	2,0 \parallel 4,8	—	$\text{k}\Omega \parallel \text{pF}$
Temperature coefficient of frequency	TC_f	—	-72	—	ppm/K



SAW Components

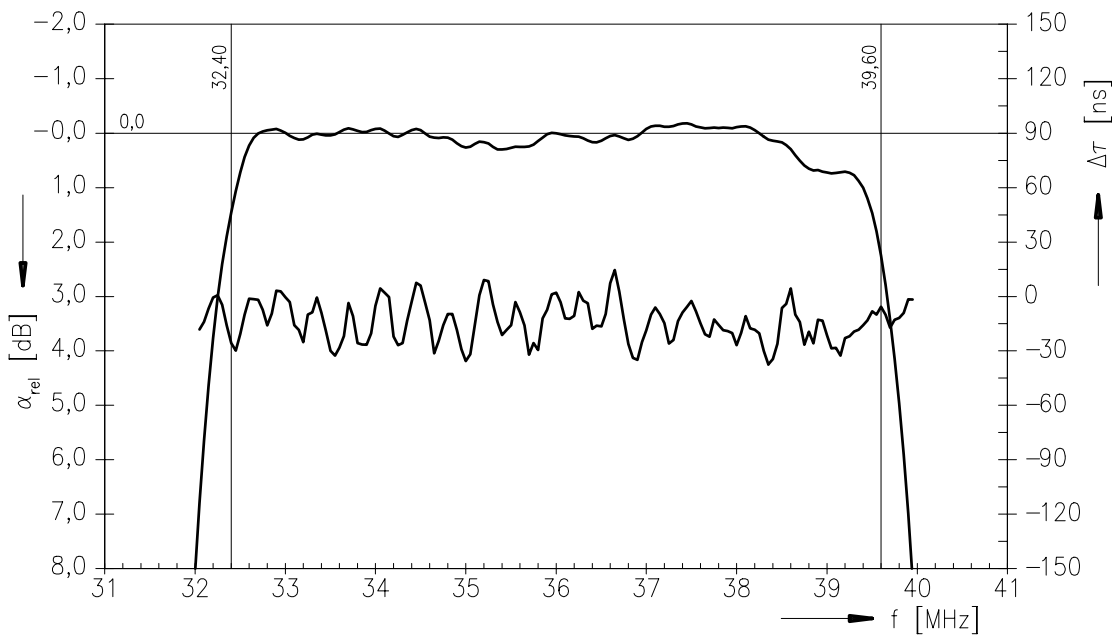
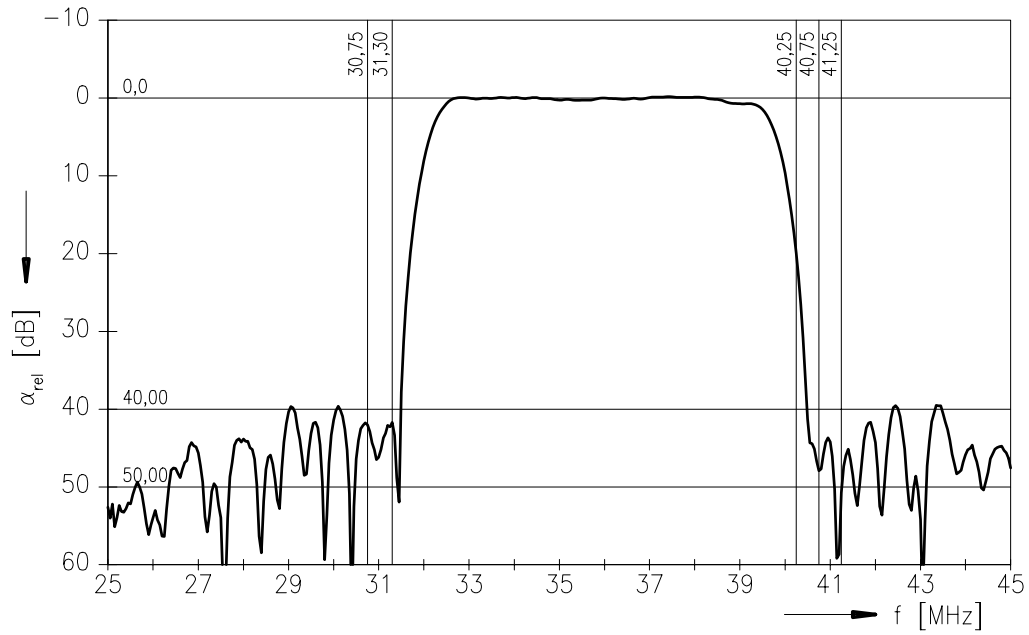
X 7255 D

Bandpass Filter

36,00 MHz

Data Sheet

Frequency response of channel 1





SAW Components

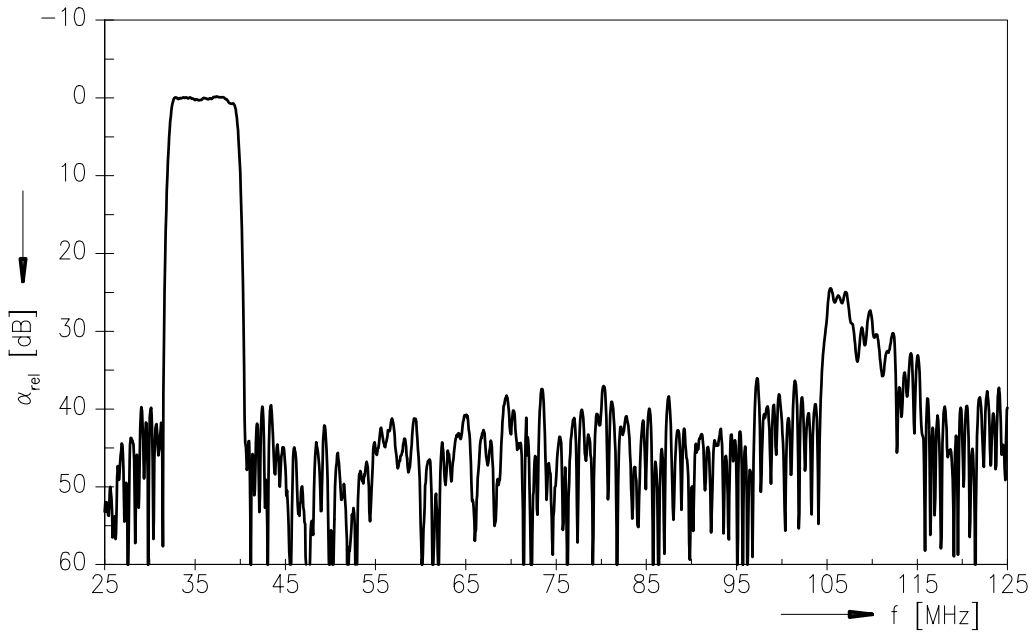
X 7255 D

Bandpass Filter

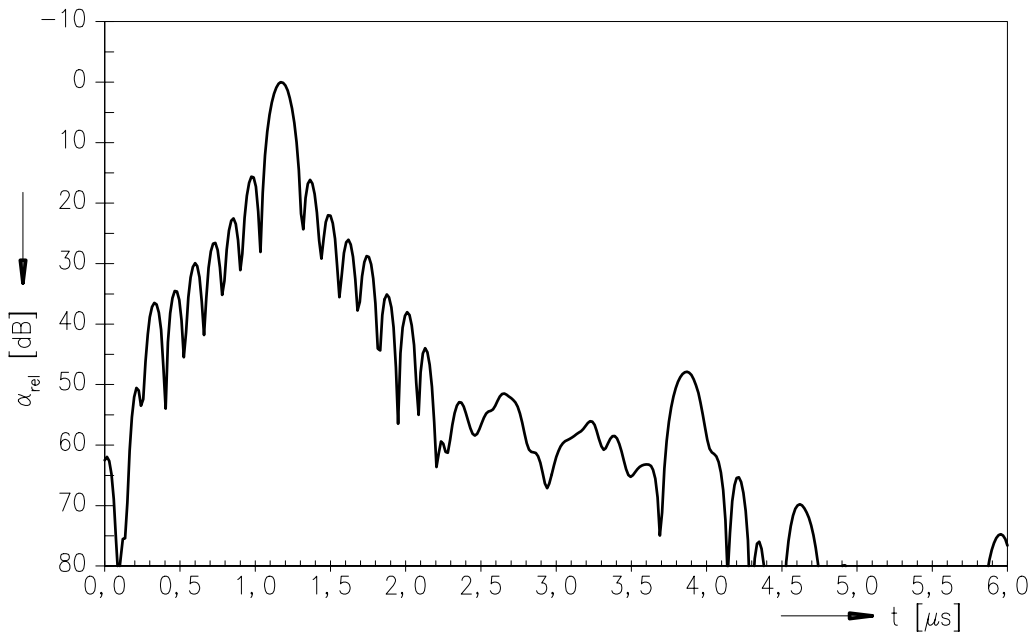
36,00 MHz

Data Sheet

Frequency response of channel 1



Time domain response of channel 1





SAW Components

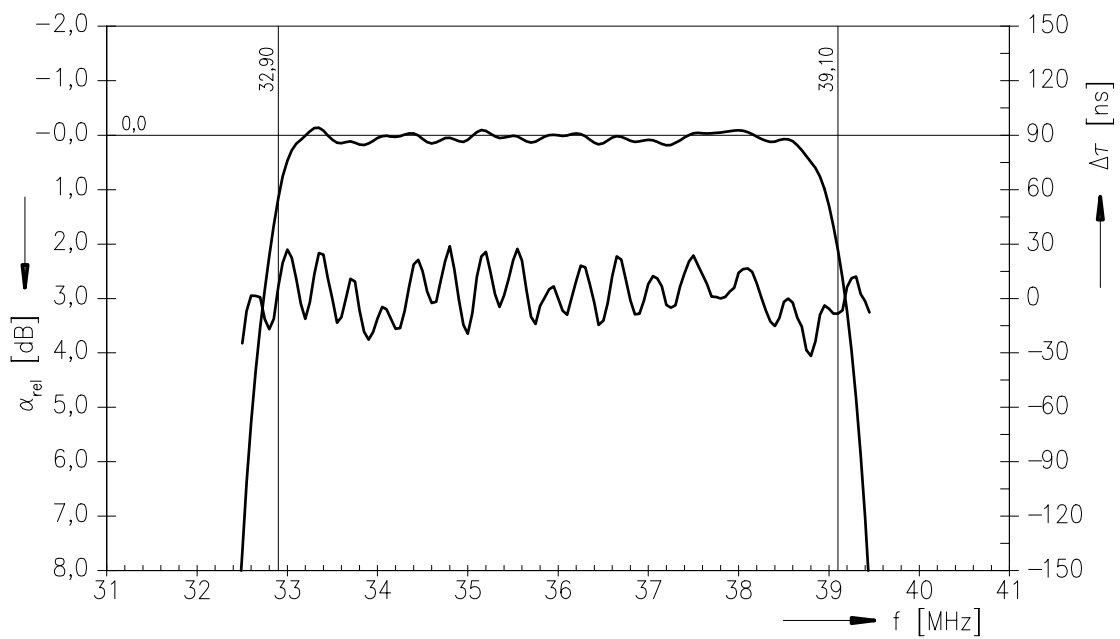
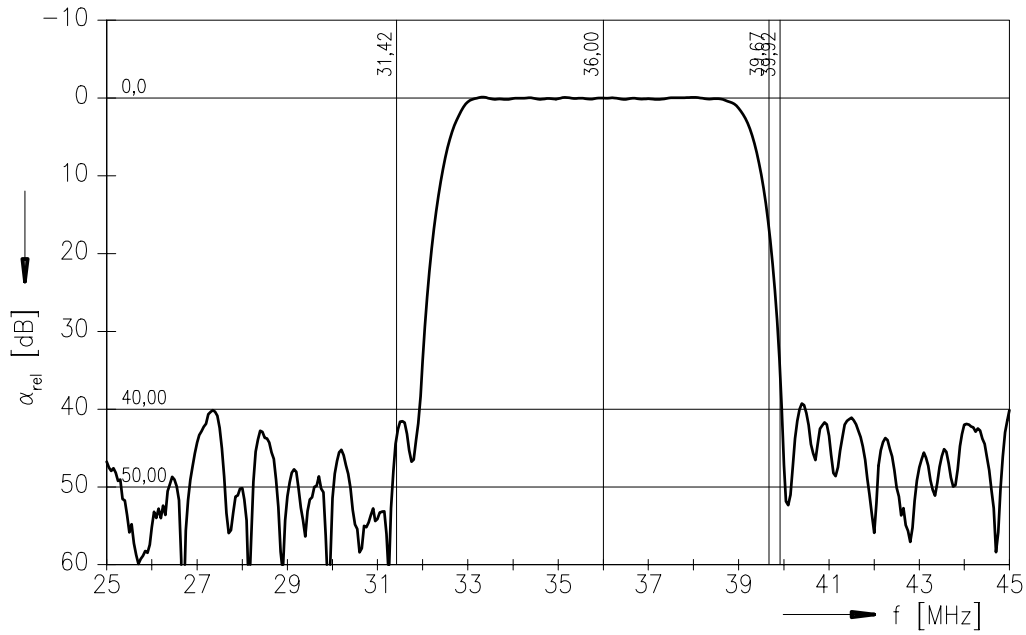
X 7255 D

Bandpass Filter

36,00 MHz

Data Sheet

Frequency response of channel 2





SAW Components

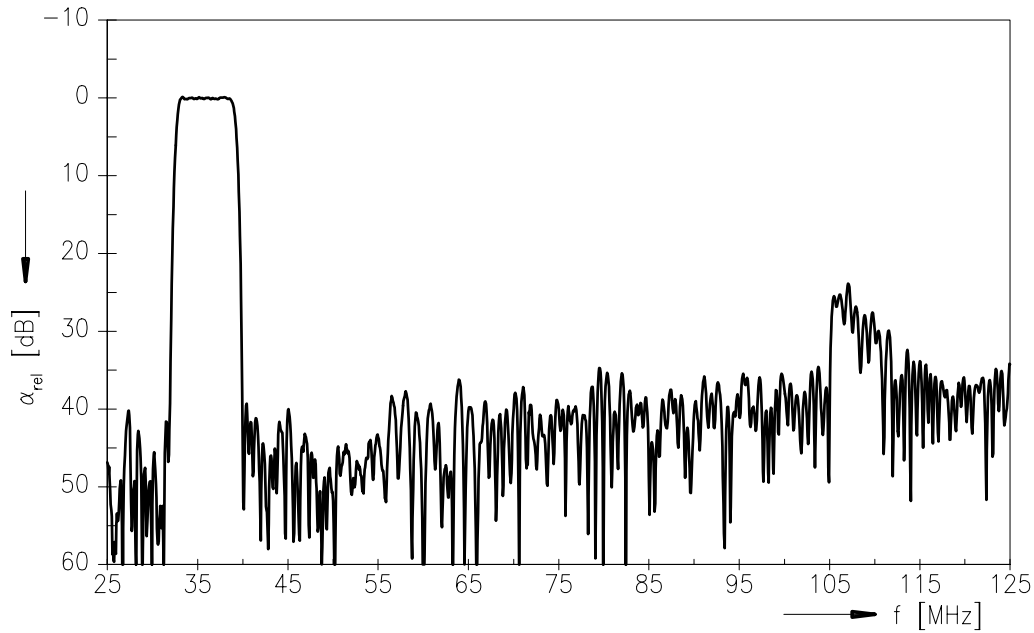
X 7255 D

Bandpass Filter

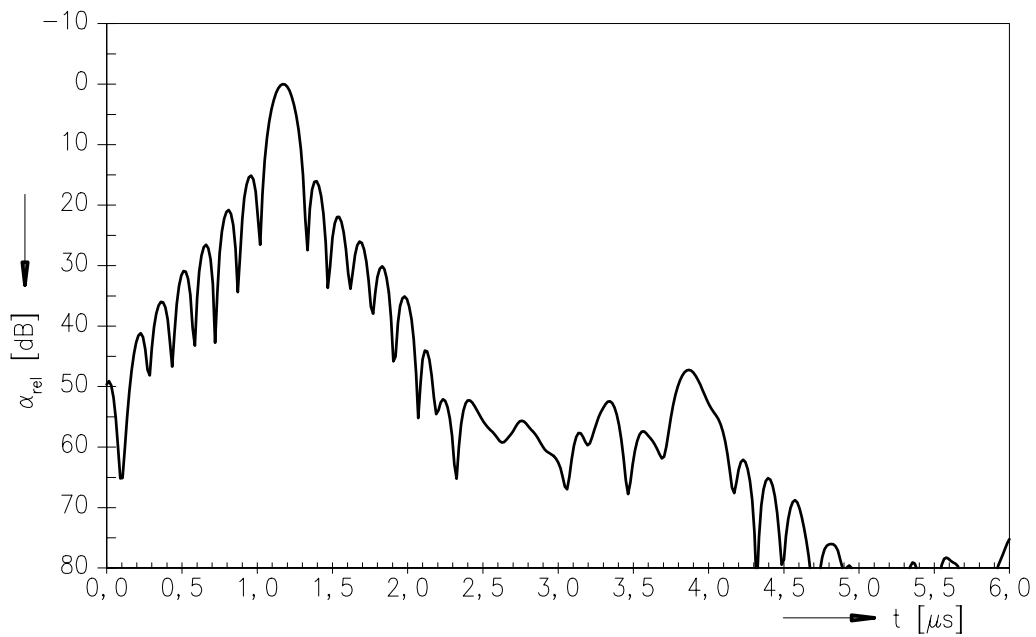
36,00 MHz

Data Sheet

Frequency response of channel 2



Time domain response of channel 2





SAW Components

X 7255 D

Bandpass Filter

36,00 MHz

Data Sheet

Published by EPCOS AG

Surface Acoustic Wave Components Division, SAW CE MM PD

P.O. Box 80 17 09, D-81617 München

© EPCOS AG 2003. Reproduction, publication and dissemination of this brochure and the information contained therein without EPCOS' prior express consent is prohibited.

Purchase orders are subject to the General Conditions for the Supply of Products and Services of the Electrical and Electronics Industry recommended by the ZVEI (German Electrical and Electronic Manufacturers' Association), unless otherwise agreed.

This brochure replaces the previous edition.

For questions on technology, prices and delivery please contact the Sales Offices of EPCOS AG or the international Representatives.

Due to technical requirements components may contain dangerous substances. For information on the type in question please also contact one of our Sales Offices.