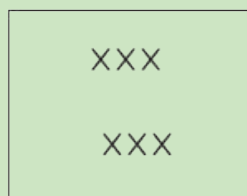
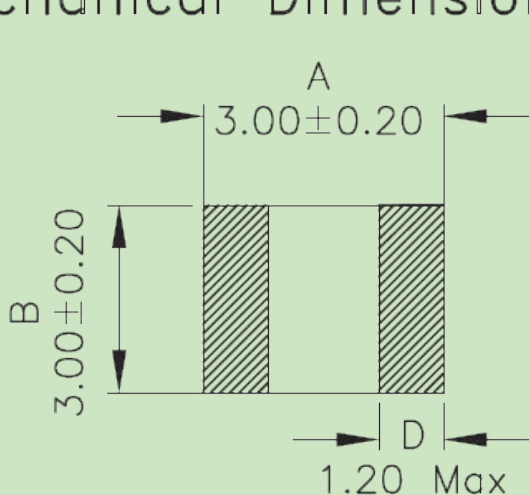


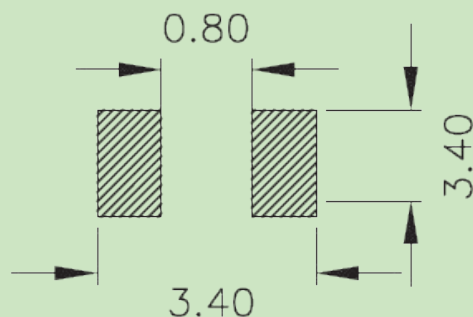
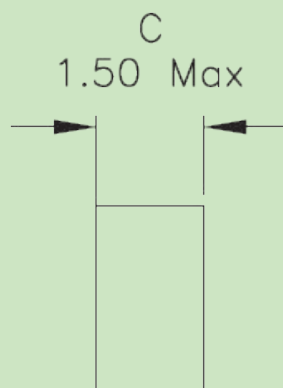


## XFCSP3-xxxx SERIES Compact Shielded Power Inductor

Mechanical Dimensions:

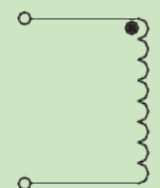


Top view



Land patterns

Schematic:



TOLERANCE:  
.xxx ±0.250  
Dimensions in MM

- Inductance Range: 1uH to 33uH
- Current Ratings: 1.3A to 4.5A
- Surface Mount
- Compact Shielded Design
- High Isat Performance
- Low Noise



## YOUR SUCCESS IS OUR GOAL...

[www.XFMRS.com](http://www.XFMRS.com)

# XFMRS

Part Number	OCL 100KHz,0.25V ( $\mu$ H) $\pm$ 20%	DCR Max 25°C (mOhms)	Irms CURRENT TYP. (A)	SATURATION CURRENT 20% TYP. Drop (Adc)
XFCSPL3-1R0M	1.00	47.0	2.7	4.5
XFCSPL3-2R2M	2.20	108	1.8	3.5
XFCSPL3-3R3M	3.30	131	1.7	3.2
XFCSPL3-4R7M	4.70	162	1.5	2.8
XFCSPL3-6R8M	6.80	287	1.1	2.4
XFCSPL3-100M	10.0	513	0.8	2.0
XFCSPL3-150M	15.0	830	0.65	1.71
XFCSPL3-220M	22.0	1040	0.6	1.6
XFCSPL3-330M	33.0	1330	0.52	1.3

#### Notes:

1. Solderability: Leads shall meet MIL-STD-202G, Method 208H for solderability.
2. Flammability: UL94V-0
3. ASTM oxygen index: > 28%
4. Insulation System: Class F 155°C, UL file E151556
5. All listed parameters are to be within tolerance from -40°C to +125°C unless otherwise noted.  
Ambient temperature: -40°C to +85°C referring to Irms
6. Storage Temperature Range: -20°C to +40°C
7. Aqueous wash compatible
8. SMD Lead Coplanarity:  $\pm$ 0.004"(0.102mm)
9. Electrical and mechanical specifications 100% tested
10. RoHS Compliant Component
11. Outsourced item processed & controlled under XFMRS QA system

YOUR SUCCESS IS OUR GOAL...

CHECK IT OUT!

[www.xfmrs.com](http://www.xfmrs.com)