



Micro Commercial Components
 20736 Marilla Street Chatsworth
 CA 91311
 Phone: (818) 701-4933
 Fax: (818) 701-4939

MT150DT08L2
MT150DT12L2
MT150DT16L2
MT150DT18L2

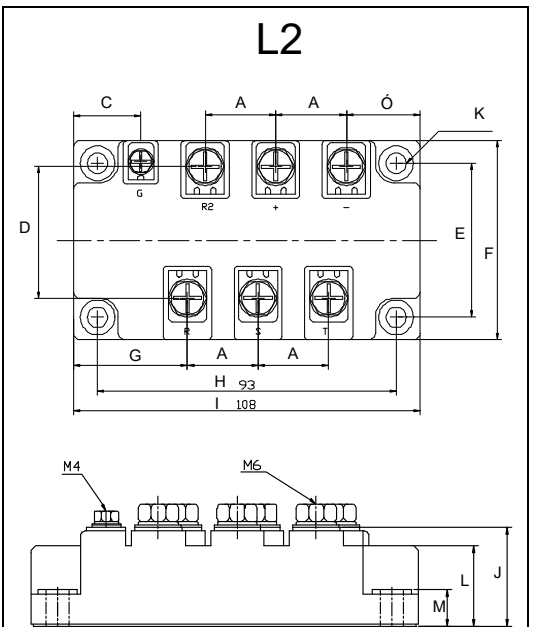
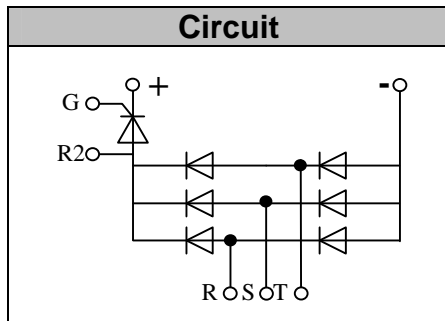
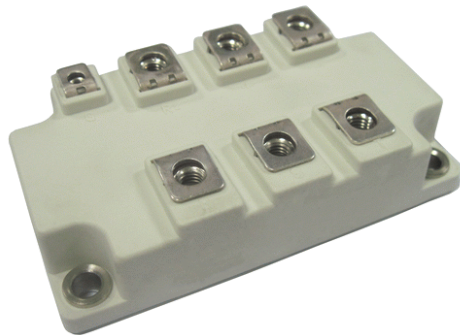
Features

- Lead Free Finish/RoHS Compliant (NOTE 1)("P" Suffix designates RoHS Compliant. See ordering information)
- Blocking Voltage:800 to 1800V
- Three Phase Bridge and a Thyristor
- Low Forward Voltage

150 Amp
Three Phase
Bridge + Thyristor
800~1800 Volts

Applications

- Inverter for AC or DC motor control
- Current stabilized power supply
- Switching power supply
- UL recognized applied for file no.E360040



| DIM | INCHES | | MM | | NOTE |
|-----|--------|------|--------|--------|------|
| | MIN | MAX | MIN | MAX | |
| A | .854 | .878 | 21.70 | 22.30 | |
| B | .894 | .917 | 22.70 | 23.30 | |
| C | .815 | .839 | 20.70 | 21.30 | |
| D | 1.60 | 1.63 | 40.70 | 41.30 | |
| E | 1.88 | 1.90 | 47.70 | 48.30 | |
| F | 2.43 | 2.45 | 61.70 | 62.30 | |
| G | 1.39 | 1.41 | 35.20 | 35.80 | |
| H | 3.65 | 3.67 | 92.70 | 93.30 | |
| I | 4.24 | 4.26 | 107.70 | 108.30 | |
| J | 1.05 | 1.08 | 26.70 | 27.30 | |
| K | | .256 | | 6.50 | ∅ |
| L | .846 | .870 | 21.50 | 22.10 | |
| M | .323 | .346 | 8.20 | 8.80 | |

Module Type

| TYPE | VRRM/ VDRM | VRSM |
|-------------|------------|-------|
| MT150DT08L2 | 800V | 900V |
| MT150DT12L2 | 1200V | 1300V |
| MT150DT16L2 | 1600V | 1700V |
| MT150DT18L2 | 1800V | 1900V |

◆Diode

Maximum Ratings

| Symbol | Item | Conditions | Values | Units |
|------------------|------------------------------------|-------------------------------|-------------|------------------|
| ID | Output Current(D.C.) | Tc=93°C Three phase full wave | 150 | A |
| IFSM | Surge forward current | t=10mS Tvj =45°C | 1500 | A |
| i ² t | Circuit Fusing Consideration | | 11250 | A ² s |
| Visol | Isolation Breakdown Voltage(R.M.S) | a.c.50HZ;r.m.s.;1min | 3000 | V |
| Tvj | Operating Junction Temperature | | -40 to +150 | °C |
| Tstg | Storage Temperature | | -40 to +125 | °C |
| Mt | Mounting Torque | To terminals(M4) | 2±15% | Nm |
| Mt | | To terminals(M6) | 5±15% | Nm |
| Ms | | To heatsink(M6) | 5±15% | Nm |
| Weight | | Module (Approximately) | 320 | g |

Thermal Characteristics

| Symbol | Item | Conditions | Values | Units |
|----------|-------------------------|-------------------------|--------|-------|
| Rth(j-c) | Thermal Impedance, max. | Junction to Case(TOTAL) | 0.14 | °C/W |
| Rth(c-s) | Thermal Impedance, max. | Case to Heat sink | 0.07 | °C/W |

Electrical Characteristics

| Symbol | Item | Conditions | Values | Units |
|------------------|---------------------------------------|---|-----------|----------|
| VFM | Forward Voltage Drop, max. | T=25°C IF =150A | 1.35 | V |
| I _{RRM} | Repetitive Peak Reverse Current, max. | Tvj =25°C VRD=VRRM Tvj =150°C VRD=VRRM | ≤2 ≤10 | mA mA |

◆Thyristor
Maximum Ratings

| Symbol | Item | Conditions | Values | Units |
|-----------|--|---|-------------|------------------------|
| I_{TAV} | Average On-State Current | $T_c=93^{\circ}\text{C}$, Single Phase half wave 180° conduction | 150 | A |
| I_{TSM} | Surge On-State Current | $T_{VJ}=45^{\circ}\text{C}$ $t=10\text{ms}$ (50Hz), sine $VR=0$ | 1500 | A |
| i^2t | Circuit Fusing Consideration | | 11250 | A^2s |
| Visol | Isolation Breakdown Voltage(R.M.S) | a.c.50HZ;r.m.s.;1 min | 3000 | V |
| T_{vj} | Operating Junction Temperature | | -40 to +125 | $^{\circ}\text{C}$ |
| T_{stg} | Storage Temperature | | -40 to +125 | $^{\circ}\text{C}$ |
| M_t | Mounting Torque | To terminals(M4) | $2\pm 15\%$ | Nm |
| M_t | | To terminals(M6) | $5\pm 15\%$ | Nm |
| M_s | | To heatsink(M6) | $5\pm 15\%$ | Nm |
| di/dt | Critical Rate of Rise of On-State Current | $T_{VJ}=T_{VJM}$, $V_D=1/2V_{DRM}$, $I_G=100\text{mA}$ $dI_G/dt=0.1\text{A}/\mu\text{s}$ | 150 | $\text{A}/\mu\text{s}$ |
| dv/dt | Critical Rate of Rise of Off-State Voltage, min. | $T_J=T_{VJM}$, $V_D=2/3V_{DRM}$, linear voltage rise | 500 | $\text{V}/\mu\text{s}$ |

Electrical and Thermal Characteristics

| Symbol | Item | Conditions | Values | | | Units |
|-------------------|---|--|--------|--|------|-----------------------------|
| | | | | | | |
| V_{TM} | Peak On-State Voltage, max. | $T=25^{\circ}\text{C}$ $I_T=150\text{A}$ | | | 1.35 | V |
| I_{RRM}/I_{DRM} | Repetitive Peak Reverse Current, max. / Repetitive Peak Off-State Current, max. | $T_{VJ}=T_{VJM}$, $V_R=V_{RRM}$, $V_D=V_{DRM}$ | | | 40 | mA |
| V_{GT} | Gate Trigger Voltage, max. | $T_{VJ}=25^{\circ}\text{C}$, $V_D=6\text{V}$ | | | 3 | V |
| I_{GT} | Gate Trigger Current, max. | $T_{VJ}=25^{\circ}\text{C}$, $V_D=6\text{V}$ | | | 150 | mA |
| $R_{th(j-c)}$ | Thermal Impedance, max. | Junction to Case | | | 0.16 | $^{\circ}\text{C}/\text{W}$ |
| $R_{th(c-s)}$ | Thermal Impedance, max. | Case to Heatsink | | | 0.07 | $^{\circ}\text{C}/\text{W}$ |

Performance Curves

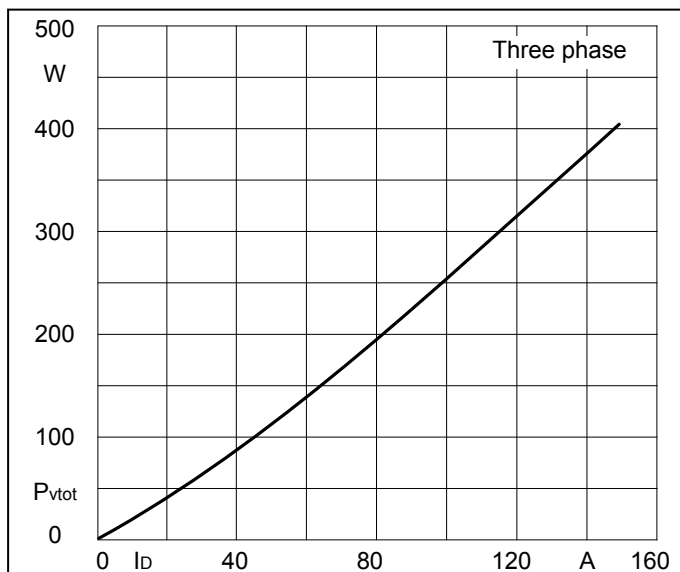


Fig1. Power dissipation

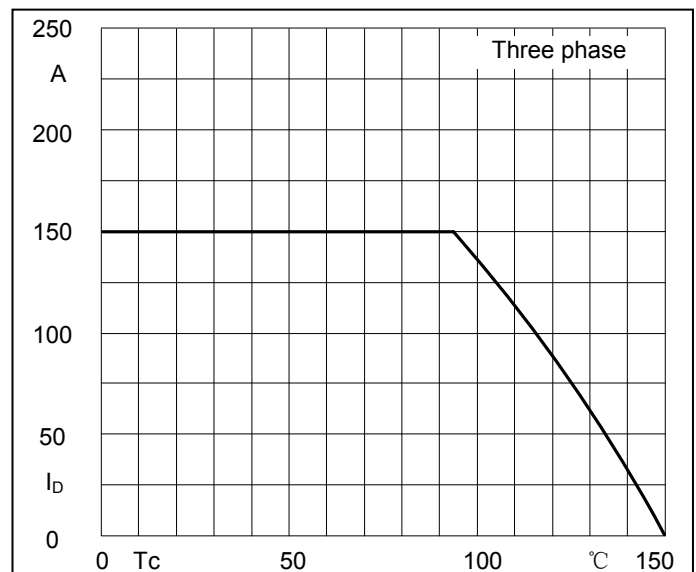


Fig2. Forward Current Derating Curve

Performance Curves

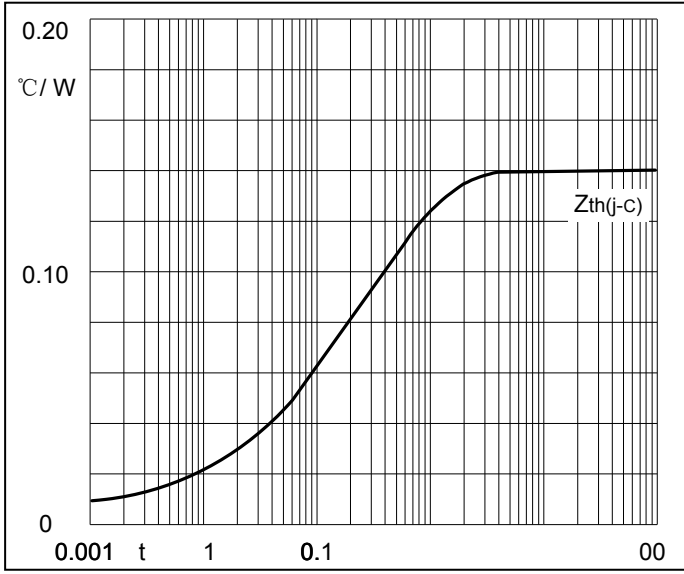


Fig3. Transient thermal impedance

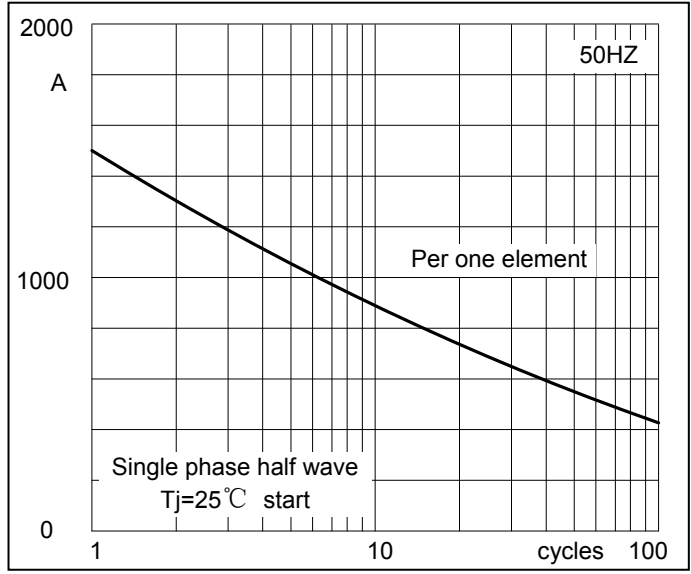


Fig4. Max Non-Repetitive Forward Surge Current

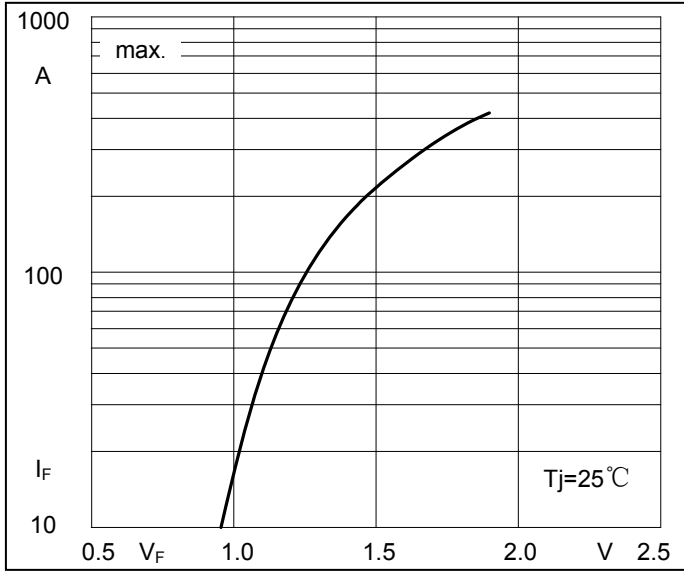


Fig5. Forward Characteristics

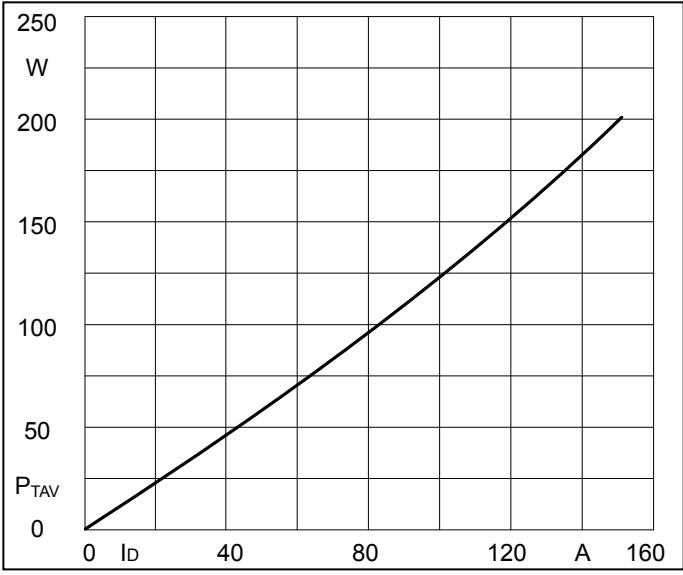


Fig6. SCR Power dissipation

Performance Curves

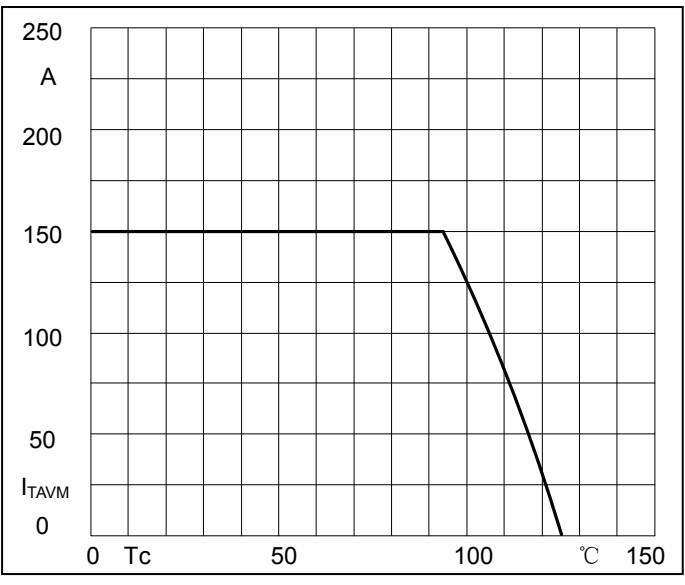


Fig7. SCR Forward Current Derating Curve

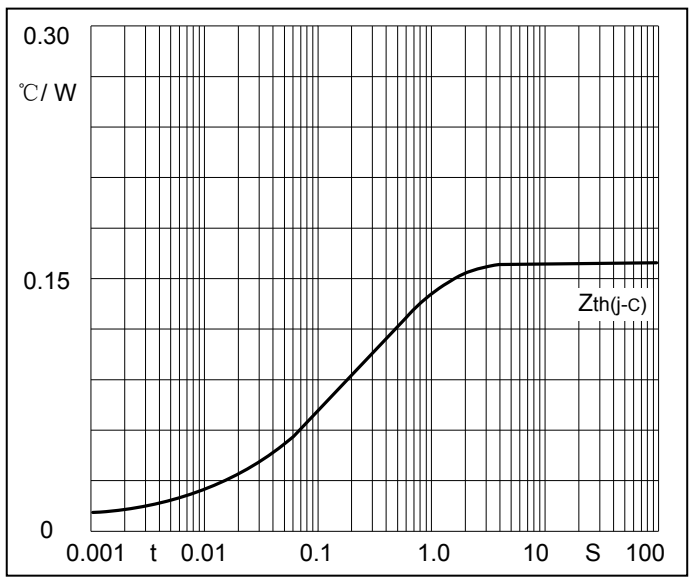


Fig8. SCR Transient thermal impedance

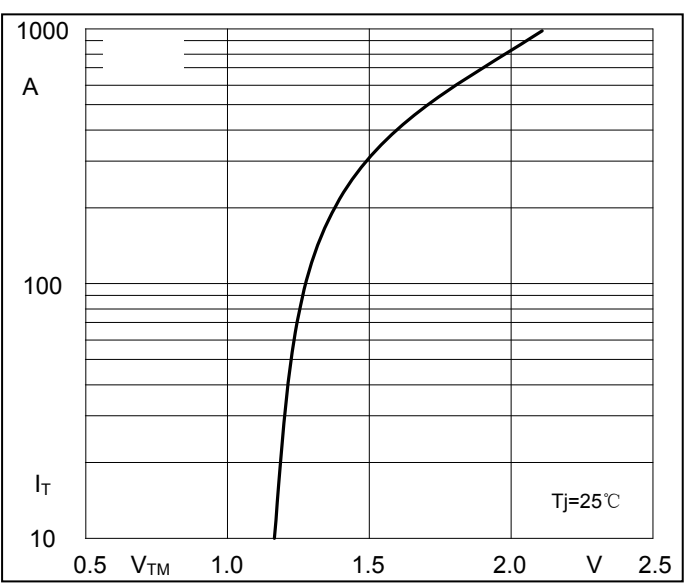


Fig9. SCR Forward Characteristics

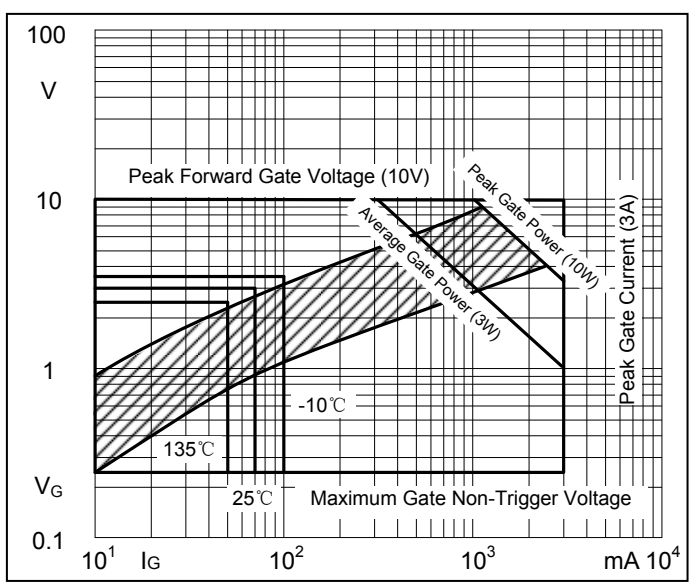


Fig10. Gate trigger Characteristics



Micro Commercial Components

Ordering Information :

| Device | Packing |
|----------------|---------------------------|
| Part Number-BP | Bulk: 4PCS/BOX ;40PCS/CTN |

*****IMPORTANT NOTICE*****

Micro Commercial Components Corp. reserves the right to make changes without further notice to any product herein to make corrections, modifications , enhancements , improvements , or other changes . **Micro Commercial Components Corp .** does not assume any liability arising out of the application or use of any product described herein; neither does it convey any license under its patent rights ,nor the rights of others . The user of products in such applications shall assume all risks of such use and will agree to hold **Micro Commercial Components Corp .** and all the companies whose products are represented on our website, harmless against all damages.

*****LIFE SUPPORT*****

MCC's products are not authorized for use as critical components in life support devices or systems without the express written approval of Micro Commercial Components Corporation.

*****CUSTOMER AWARENESS*****

Counterfeiting of semiconductor parts is a growing problem in the industry. Micro Commercial Components (MCC) is taking strong measures to protect ourselves and our customers from the proliferation of counterfeit parts. MCC strongly encourages customers to purchase MCC parts either directly from MCC or from Authorized MCC Distributors who are listed by country on our web page cited below. Products customers buy either from MCC directly or from Authorized MCC Distributors are genuine parts, have full traceability, meet MCC's quality standards for handling and storage. **MCC will not provide any warranty coverage or other assistance for parts bought from Unauthorized Sources.** MCC is committed to combat this global problem and encourage our customers to do their part in stopping this practice by buying direct or from authorized distributors.

www.mccsemi.com