

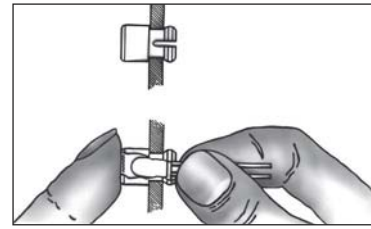
# LED LENS CAPS

Designed for use with T-1 or T-1 3/4 LEDs, these Lens Caps are available in round or square configurations. They snap-mount through the front panel for easy, light-finger pressure, installation. The LED is inserted into the cap from behind the panel and held securely in place.

The Lens Cap protects the LED from physical damage while guarding the components from electrostatic discharge (ESD), up to 16KV. More economical than indicator light assemblies, the caps feature striated lines and fresnel rings which permit up to 180 viewing angles with either diffused or non-diffused LED's. They provide exceptionally high contrast and visibility.



**MATERIAL:** Polycarbonate  
Available in Red, Green, Yellow and Clear



## ROUND CAPS

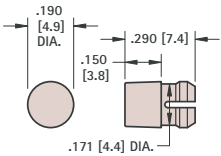


FIG. 1 T-1

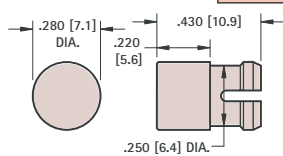


FIG. 2 T-1 3/4

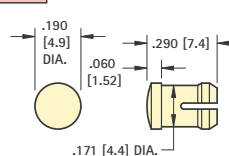


FIG. 3 T-1

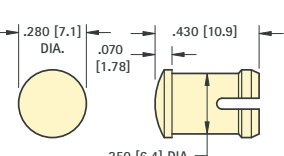


FIG. 4 T-1 3/4

### STANDARD HEIGHT

CAT. NO.	COLOR	FIG. NO.	LED SIZE	MTG. HOLE SIZE	MIN. MTG. CENTERS	PANEL THICKNESS
8650	RED	1	T-1	.171 (4.3)	.250 (6.4)	.031 - .062 (.79/1.57)
8651	GREEN					
8652	YELLOW					
8653	CLEAR	2	T-1 3/4	.250 (6.4)	.375 (9.5)	.062 - .125 (1.57/3.18)
8662	RED					
8663	GREEN					
8664	YELLOW					
8665	CLEAR					

### LOW PROFILE

CAT. NO.	COLOR	FIG. NO.	LED SIZE	MTG. HOLE SIZE	MIN. MTG. CENTERS	PANEL THICKNESS
8656	RED	3	T-1	.171 (4.3)	.250 (6.4)	.062 - .125 (1.57/3.18)
8657	GREEN					
8658	YELLOW					
8659	CLEAR	4	T-1 3/4	.250 (6.4)	.375 (9.5)	.031 - .250 (.79/6.4) (See Note)
8668	RED					
8669	GREEN					
8670	YELLOW					
8671	CLEAR					

## SQUARE CAPS

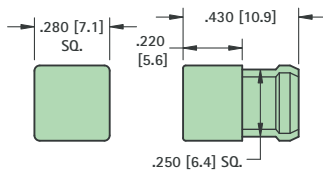


FIG. 5 T-1 3/4

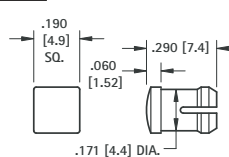


FIG. 6 T-1

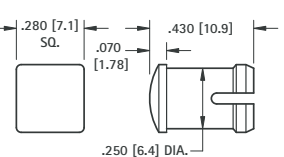


FIG. 7 T-1 3/4

### STANDARD HEIGHT

CAT. NO.	COLOR	FIG. NO.	LED SIZE	MTG. HOLE SIZE	MIN. MTG. CENTERS	PANEL THICKNESS
8680	RED	5	T-1 3/4	.250 (6.4) SQUARE	.375 (9.5)	.062 - .125 (1.57/3.18)
8681	GREEN					
8682	YELLOW					
8683	CLEAR					

### LOW PROFILE

CAT. NO.	COLOR	FIG. NO.	LED SIZE	MTG. HOLE SIZE	MIN. MTG. CENTERS	PANEL THICKNESS
8674	RED	6	T-1	.171 (4.3)	.250 (6.4)	.062 - .125 (1.57/3.18)
8675	GREEN					
8676	YELLOW					
8677	CLEAR	7	T-1 3/4	.250 (6.4)	.375 (9.5)	.031 - .250 (.79/6.4) (See Note)
8686	RED					
8687	GREEN					
8688	YELLOW					
8689	CLEAR					

Note: When mounting T-1 3/4 Low Profile Caps (Fig. 4 or Fig. 7) in panels .125 (3.2) thick or less a spacer must be used. **Spacer CAT. NO. 8692 MATERIAL:** White Nylon .360 (9.1) O.D. x 1/4 I.D. x 1/8 Lg.

## "SNAP-IN" T-1 & T-1 3/4 LED HOLDERS

Designed for use with T-1 or T-1 3/4 LED's in .060 (1.52) - .070 (1.78) thick panels. The holder snaps into the front panel with easy, light-finger pressure. The LED snaps into the holder from behind the panel and is held securely in place.



**MATERIAL:** Nylon 6/6, Black

CAT. NO.	LED SIZE	A	B	C	MTG. HOLE SIZE
8309	T-1	.114 (2.9)	.232 (5.9)	.188 (4.8)	.171 (4.3)
8310	T-1 3/4	.200 (5.0)	.315 (8.0)	.274 (6.9)	.250 (6.4)

