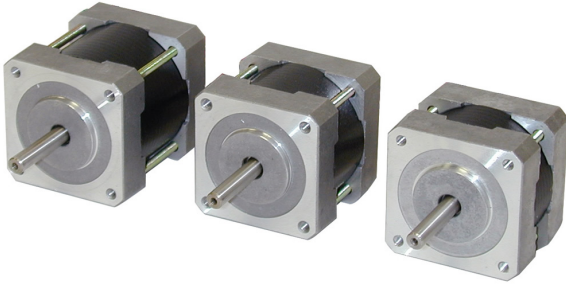


5017-009

NEMA 17 Step Motor

1pc. - \$22.00
 50pc. - \$22.00



Product Features

- **Closeout sale in progress**
- **Single shaft only**
- **Limited quantity in stock**
- 2-phase hybrid step motor
- Standard NEMA 17 dimensions
- 1.8 degree step angle



Description

The 5017-009 stepper motor with single shaft (**see Note below**) is a two-phase hybrid step motor with a NEMA 17 frame size. The motor is no longer in production (and normally listed as archived on our website) but is being offered in a closeout sale to clear our inventory. Once the remaining inventory of this motor is depleted the motor will revert to being listed as archived on our website and will no longer be available for purchase. This makes the motor a good choice for one-time applications, research & development work, and hobbyist projects.






Note: Only the single-shaft version of this motor is available for purchase in the closeout sale. The double-shaft version, 5017-009D, is not available. All sales are final.

Specifications

Part Number	5017-009
Frame Size	NEMA 17
Motor Type	Standard torque
Part Number w/Double Shaft	NA
Part Number w/Encoder	NA
Motor Length	1.54 inches
Number of Lead Wires	6
Lead Wire Configuration	flying leads, no connector
Lead Wire/Cable Length	12 inches
Lead Wire Gauge	22 AWG
Unipolar Holding Torque	22.2 oz-in

Bipolar Holding Torque	31.4 oz-in
Step Angle	1.8 deg
Bipolar Series Current	0.57 A/phase
Bipolar Series Resistance	15.0 Ohms/phase
Bipolar Series Inductance	26.0 mH/phase
Bipolar Parallel Current	NA
Bipolar Parallel Resistance	NA
Bipolar Parallel Inductance	NA
Unipolar Current	0.80 A/phase
Unipolar Resistance	7.5 Ohms/phase
Unipolar Inductance	6.5 mH/phase
Rotor Inertia	3.82E-04 oz-in-sec ²
Integral Gearhead	No
Weight	NA
Storage Temperature	-40 to 70 °C
Operating Temperature	-10 to 40 °C
Insulation Class	Class B (130 °C)
Maximum Radial Load	NA
Maximum Thrust Load	NA
Shaft Run Out	0.001 inch T.I.R. max
Radial Play	0.001 inch max w/ 4.4 lb load
End Play	0.001 inch max w/ 6.6 lb load
Perpendicularity	0.003 inches
Concentricity	0.002 inches

Downloads

Datasheet	 StepMotorWiring-6-lead.pdf
2D Drawing	 5017-009_RevC.pdf  171838_RevC.pdf
3D Drawing	 5017-39mm.igs  HT17_39mm_wWAA_encoder.igs
Speed-Torque Curves	There are currently no Speed-Torque Curves documents available for this product.
Agency Approvals	There are no related agency approval documents at this time.
Application Notes	There are currently no Application Notes available for this product.

Pricing

5017-009 Part No. w/ Single Shaft	
1pc.	\$22.00
25pc.	\$22.00
50pc.	\$22.00
100pc.	Contact us for 100+ piece pricing.