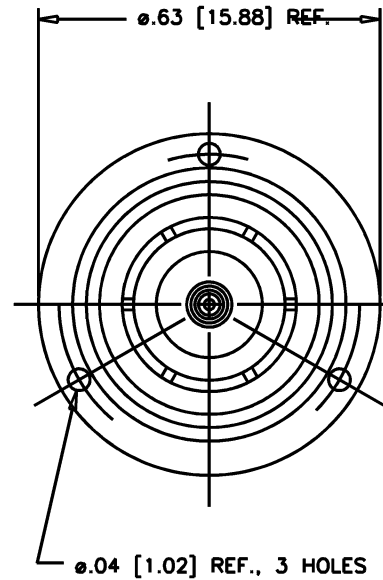
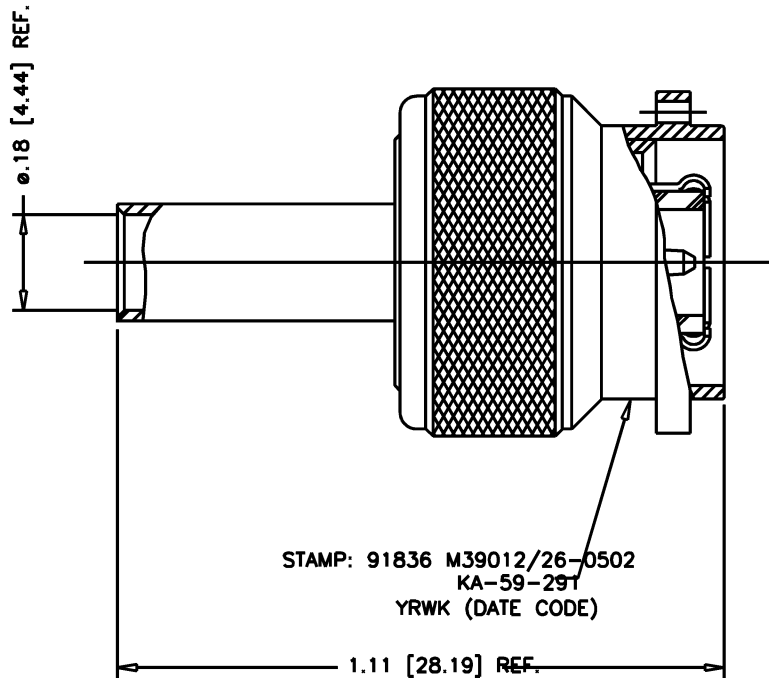


DASH NO.	M CODE	MADE FROM
----------	--------	-----------

# GSD

M39012/26-0502 (SHEET 1 OF 2)

REVISIONS	
ISSUE	CHANGES
6	CN 39837 C REDRAWN DRK 03/13/07



**NOTES:**

- FOR USE WITH RG-58, 58A, 58C, 141, & 141A/U CABLES.
- FOR CRIMPING USE CRIMP DIE SIZE 07.
- FOR CABLING INSTRUCTIONS SEE CP-465.
- CENTER CONTACT TO HAVE ONE YELLOW AND ONE BLUE BAND.
- MATERIALS:  
 OUTER CONTACT: BER. COP., ASTM-B194  
 INSULATOR: TEFLON, ASTM-D4894  
 GASKET: SILICONE RUBBER, A-A-59588  
 C-RING: PHOS. BRONZE, ASTM-B103
- ALL DIMENSIONS IN INCHES [MM].

SCALE	4:1
APPROX SURFACE AREA	KA-59-291
USED ON	
REF:	
PLUG, TNC	
DRAWN DRK	DATE 03/13/07
DESIGN LI	DATE 07/25/75
APPR.	DATE

**KINGS**  
ELECTRONICS CO., INC.  
ROCK HILL, SOUTH CAROLINA 29730

M39012/26-0502  
(SHEET 1 OF 2)

# GSD