

# EMC Components

## 3-Terminal Filters for Signal Line SMD

## ACF Series ACF321825, 451832 Types

### FEATURES

- The ACF series are T-type EMC filters incorporating ferrite chip beads and multilayer ceramic chip capacitors.
- The external structure consists entirely of ferrite, enabling these parts to achieve superior attenuation characteristics despite their extremely compact dimensions.
- Because they can be mounted on edge, the ACF series are ideal for high-density circuit configurations.
- Available for reflow soldering.
- It is a product conforming to RoHS directive.

### PRODUCT IDENTIFICATION

ACF 321825 - 223  
(1) (2) (3)

- (1) Series name  
(2) Dimensions  
(3) Capacitance

### TEMPERATURE RANGES

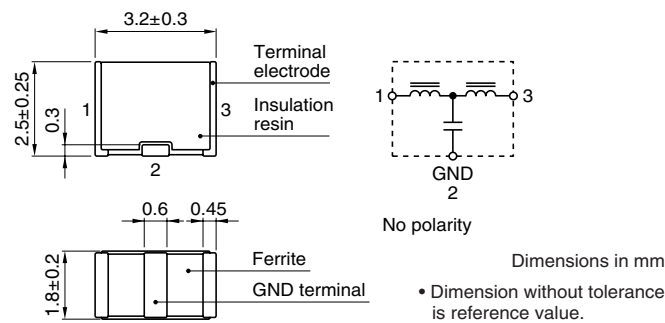
Operating/Storage -25 to +85°C

### PACKAGING STYLE AND QUANTITIES

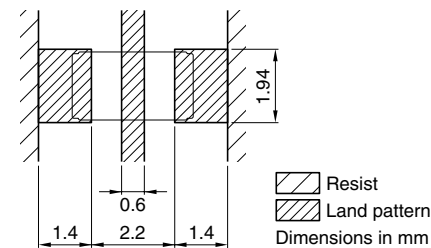
Packaging style Quantity  
Taping 1000 pieces/reel

### ACF321825 TYPE

#### SHAPES AND DIMENSIONS/CIRCUIT DIAGRAM



#### RECOMMENDED PC BOARD PATTERN REFLOW SOLDERING



### ELECTRICAL CHARACTERISTICS

Part No.	Maximum attenuation frequency (MHz)	25dB attenuation frequency range (MHz)	Rated voltage Edc (V)max.	Rated current (mA)max.	DC resistance (Ω)max. [Terminal No.1 to 3]	Insulation resistance (MΩ)min. [Terminal No.1 to 2/No.2 to 3]
ACF321825-223	17	11 to 55	20	300	0.15	1000
ACF321825-103	27	17 to 60	20	300	0.15	1000
ACF321825-682	37	22 to 75	20	300	0.15	1000
ACF321825-472	45	30 to 85	20	300	0.15	1000
ACF321825-332	55	37 to 90	20	300	0.15	1000
ACF321825-222	65	45 to 105	20	300	0.15	1000
ACF321825-152	80	60 to 115	20	300	0.15	1000
ACF321825-102	100	80 to 140	20	300	0.15	1000
ACF321825-681	120	95 to 150	20	300	0.15	1000
ACF321825-471	145	120 to 180	20	300	0.15	1000
ACF321825-331	165	130 to 210	20	300	0.15	1000
ACF321825-221	200	170 to 250	20	300	0.15	1000
ACF321825-151	240	205 to 280	20	300	0.15	1000
ACF321825-101	300	265 to 340	20	300	0.15	1000
ACF321825-680	370	340 to 420	20	300	0.15	1000
ACF321825-470	450	420 to 500	20	300	0.15	1000
ACF321825-330	530	500 to 600	20	300	0.15	1000
ACF321825-220	650	600 to 700	20	300	0.15	1000

• Conformity to RoHS Directive: This means that, in conformity with EU Directive 2002/95/EC, lead, cadmium, mercury, hexavalent chromium, and specific bromine-based flame retardants, PBB and PBDE, have not been used, except for exempted applications.

• Please contact our Sales office when your application are considered the following:  
The device's failure or malfunction may directly endanger human life (e.g. application for automobile/aircraft/medical/nuclear power devices, etc.)

• All specifications are subject to change without notice.

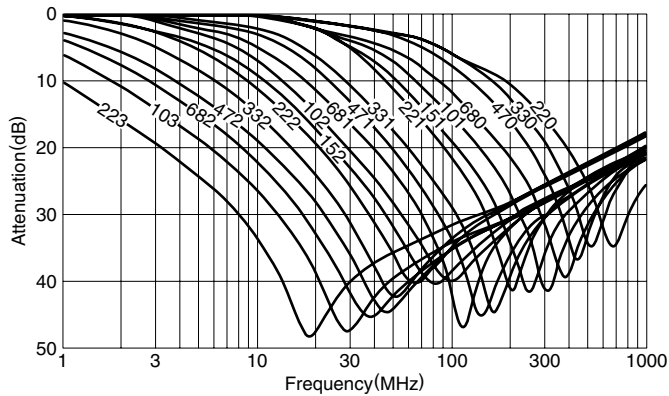
# EMC Components

## 3-Terminal Filters for Signal Line SMD

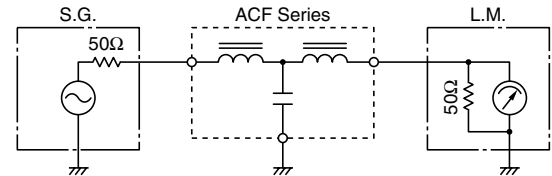
## ACF Series ACF321825, 451832 Types

### TYPICAL ELECTRICAL CHARACTERISTICS

#### ATTENUATION vs. FREQUENCY CHARACTERISTICS

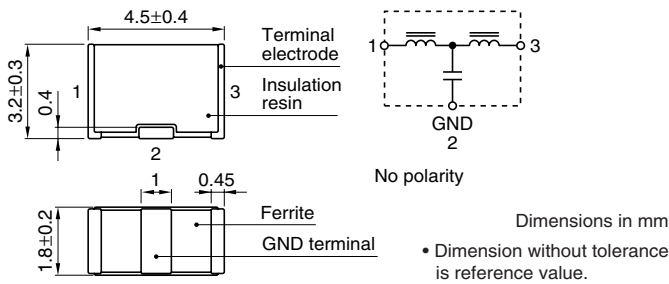


#### MEASURING CIRCUIT

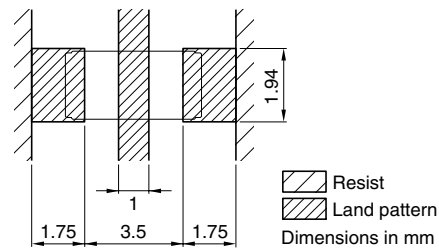


### ACF451832 TYPE

#### SHAPES AND DIMENSIONS/CIRCUIT DIAGRAM



#### RECOMMENDED PC BOARD PATTERN REFLOW SOLDERING



### ELECTRICAL CHARACTERISTICS

Part No.	Maximum attenuation frequency (MHz)	25dB attenuation frequency range (MHz)	Rated voltage E <sub>dc</sub> (V)max.	Rated current (mA)max.	DC resistance (Ω)max. [Terminal No.1 to 3]	Insulation resistance (MΩ)min. [Terminal No.1 to 2/No.2 to 3]
ACF451832-333	12	7 to 60	50	300	0.15	1000
ACF451832-223	15	9 to 65	50	300	0.15	1000
ACF451832-153	18	11 to 70	50	300	0.15	1000
ACF451832-103	23	15 to 75	50	300	0.15	1000
ACF451832-682	35	20 to 85	50	300	0.15	1000
ACF451832-472	40	25 to 90	50	300	0.15	1000
ACF451832-332	50	35 to 100	50	300	0.15	1000
ACF451832-222	60	40 to 110	50	300	0.15	1000
ACF451832-152	75	50 to 130	50	300	0.15	1000
ACF451832-102	90	65 to 150	50	300	0.15	1000
ACF451832-681	105	75 to 160	50	300	0.15	1000
ACF451832-471	125	95 to 180	50	300	0.15	1000
ACF451832-331	150	115 to 205	50	300	0.15	1000
ACF451832-221	190	150 to 250	50	300	0.15	1000
ACF451832-151	230	190 to 290	50	300	0.15	1000
ACF451832-101	280	235 to 335	50	300	0.15	1000
ACF451832-680	340	295 to 395	50	300	0.15	1000
ACF451832-470	410	360 to 460	50	300	0.15	1000
ACF451832-330	500	450 to 550	50	300	0.15	1000
ACF451832-220	600	550 to 650	50	300	0.15	1000

# EMC Components

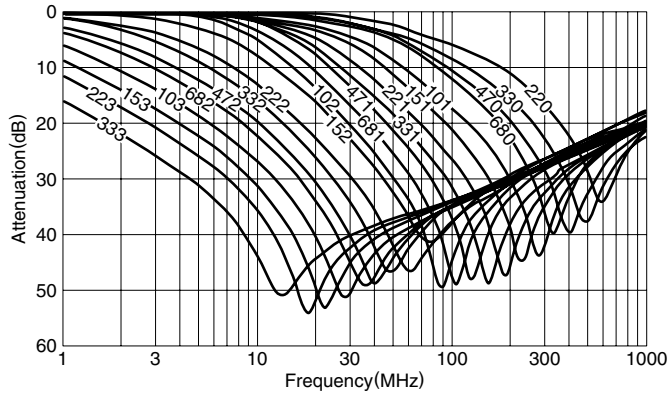
## 3-Terminal Filters for Signal Line SMD

ACF Series ACF321825, 451832 Types

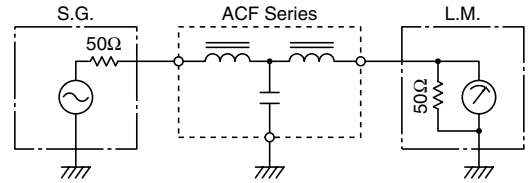
### ACF451832 TYPE

#### TYPICAL ELECTRICAL CHARACTERISTICS

#### ATTENUATION vs. FREQUENCY CHARACTERISTICS



#### MEASURING CIRCUIT



# Mouser Electronics

Authorized Distributor

Click to View Pricing, Inventory, Delivery & Lifecycle Information:

## TDK:

[ACF451832-102-TLD01](#) [ACF451832-103-TLD01](#) [ACF451832-151-TLD01](#) [ACF451832-153-TL](#) [ACF451832-153-TLD01](#) [ACF451832-333-TL](#) [ACF451832-333-TLD01](#) [ACF451832-681-TLD01](#) [ACF451832-101-TD01](#) [ACF451832-103-TD01](#) [ACF451832-102-TD01](#) [ACF451832-220-TD01](#) [ACF451832-222-TD01](#) [ACF451832-223-TD01](#) [ACF451832-221-TD01](#) [ACF451832-471-TD01](#) [ACF451832-472-TD01](#) [ACF451832-470-TD01](#) [ACF451832-333-TD01](#) [ACF451832-332-TD01](#) [ACF451832-331-TD01](#) [ACF451832-330-TD01](#) [ACF451832-151-TD01](#) [ACF451832-153-TD01](#) [ACF451832-152-TD01](#) [ACF321825-220-TD01](#) [ACF321825-222-TD01](#) [ACF321825-221-TD01](#) [ACF321825-223-TD01](#) [ACF321825-472-TD01](#) [ACF321825-470-TD01](#) [ACF321825-471-TD01](#) [ACF451832-681-TD01](#) [ACF321825-152-TD01](#) [ACF321825-151-TD01](#) [ACF321825-330-TD01](#) [ACF321825-332-TD01](#) [ACF321825-331-TD01](#) [ACF451832-680-TD01](#) [ACF451832-682-TD01](#) [ACF321825-103-TD01](#) [ACF321825-102-TD01](#) [ACF321825-101-TD01](#) [ACF321825-680-TD01](#) [ACF321825-682-TD01](#) [ACF321825-681-TD01](#) [ACF451832-101-TLD01](#) [ACF451832-223-TLD01](#) [ACF451832-472-TLD01](#) [ACF451832-332-TLD01](#) [ACF451832-222-TLD01](#) [ACF451832-152-TLD01](#) [ACF451832-471-TLD01](#) [ACF451832-331-TLD01](#) [ACF451832-221-TLD01](#) [ACF451832-680-TLD01](#) [ACF451832-470-TLD01](#) [ACF451832-330-TLD01](#) [ACF451832-220-TLD01](#) [ACF451832-682-TLD01](#)