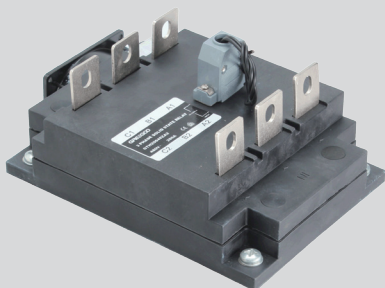


GTH 200 to500Amps AC SSR



3 phase solid state relays (SCR output 200A to 500A)

GTH series three phase Solid State Relays is used three phase loads. SCR Output. GTH series is Dual SCR Power Hybrid technology provides highly efficient thermal management for greatly increased cyclic life.

Feature:

- Three phase Solid State Relays
- Rated operational current 3X200, 3X300, 3X400 and 3X500Amps.
- High voltage (1400 Vpk) versions for 530 Vrms service.
- Both "Zero Voltage" & phase controllable "Random Switching" versions.
- Input Voltage Range 4 to 16 Vdc, 3 to 32 Vdc, 90 to 250Vac.
- 2500 Vrms Optical Isolation.(input/output)
- LED-indication for control input.

Symbol

Meaning

G	Greegoo
T	Three phase
H	SCR output
*	200-200A, 300-300A, 400-400A, 500-500A
*	48-480V, 53-530V
*	Z-zero control, R-random control
*	D3-3-32Vdc, A2-90-250Vac

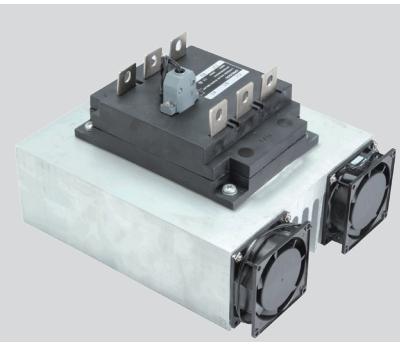
For example: GTH40048ZD3, 3 phase, 400A,480Vac,3-32Vdc control

Selection Guide

Rated Voltage	Control voltage	Rated operational current	
		200 Amp	300Amp
480 VAC "Z"	3 to 32 Vdc	GTH20048ZD3	GTH30048ZD3
480 VAC "R"	3 to 32 Vdc	GTH20048RD3	GTH30048RD3
530 VAC "Z"	3 to 32 Vdc	GTH20053ZD3	GTH30053ZD3
530 VAC "R"	3 to 32 Vdc	GTH20053RD3	GTH30053RD3
480 VAC "Z"	90 to 250Vac	GTH20048ZA2	GTH30048ZA2
480 VAC "R"	90 to 250Vac	GTH20048RA2	GTH30048RA2
530 VAC "Z"	90 to 250Vac	GTH20053ZA2	GTH30053ZA2
530 VAC "R"	90 to 250Vac	GTH20053RA2	GTH30053RA2
		400 Amp	500Amp
480 VAC "Z"	3 to 32 Vdc	GTH40048ZD3	GTH50048ZD3
480 VAC "R"	3 to 32 Vdc	GTH40048RD3	GTH50048RD3
530 VAC "Z"	3 to 32 Vdc	GTH40053ZD3	GTH50053ZD3
530 VAC "R"	3 to 32 Vdc	GTH40053RD3	GTH50053RD3
480 VAC "Z"	90 to 250Vac	GTH40048ZA2	GTH50048ZA2
480 VAC "R"	90 to 250Vac	GTH40048RA2	GTH50048RA2
530 VAC "Z"	90 to 250Vac	GTH40053ZA2	GTH50053ZA2
530 VAC "R"	90 to 250Vac	GTH40053RA2	GTH50053RA2

Parameter-list	Specification Limits	
Input Parameter	D3	A2
Control Voltage Range	3 to 32Vdc	90 to 250Vac
Input Current(Max.)	33/56mAdc @=5V/24V	13mAac @=220V
Must Turn On Voltage	3Vdc	90Vac
Must Turn Off Voltage	1.5Vdc	10Vac
Reverse Voltage (Max.)	32Vdc	/

GTH 200 to 500Amps AC SSR



Specifications

Output Parameter	Units	Specification Limits			
Model No.:GTH	Amp	200	300	400	500
Load Current Range	Arms	3x200	3x300	3x400	3x500
Surge Current 20mSec(Max.)	Arms	2100	5000	7000	8000
Load Voltage Range(480V)	Vrms	44 to 480			
SCR Over voltage(480V)	Vpk	≥1200			
Load Voltage Range(530V)	Vrms	53 to 530			
SCR Over voltage(530V)	Vpk	≥1400			
Thermal Resistance,(Rthjc)	°C/w	0.14	0.09	0.072	0.065
Frequency Range	Hz	47 to 63			
Off State dv/dt (Min.)	V/μsec	500			
Off State Leakage Current(Max.)	mArms	<10	<10	<15	<20
On State Voltage Drop(Max.)	Vrms	1.8			
Turn On Time (Max.)"Z"	Cycle	1/2			
Turn On Time (Max.)"R"	mSec	1			
Turn Off Time (Max.)	Cycle	1/2			
Turn Off Time (Max.)"A2"	mSec	40			
Dielectric (Input/Output)	Vrms	2500			
Dielectric (Input-Output/Base)	Vrms	2500			
Capacitance	pf	10			
Ambient Temperature Range	Operating or Storage -30°C to +80°C				
Weight (Typical)	2200g				
Base Plate	Copper, nikel-plated				
Case Color	Black				
Led Display	Yes				

Dimension

