

PLEASE CHECK WWW.MOLEX.COM FOR LATEST PART INFORMATION

Part Number: **0190330003**
Status: **Active**
Description: Krimptite™ Snap Plug, for 18-22 AWG Wire

Documents:

[Drawing \(PDF\)](#) [RoHS Certificate of Compliance \(PDF\)](#)
[Packaging Specification \(PDF\)](#)

Agency Certification

CSA LR18689
 UL E152602

General

Product Family Quick Disconnects
 Series 19033
 Crimp Quality Equipment Yes
 MolexKits Yes
 Product Name Krimptite™
 Type Snap Plug

Physical

Barrel Type Closed
 Gender Male
 Glow-Wire Compliant No
 Insulation None
 Lock to Mating Part None
 Material - Metal Copper
 Material - Plating Mating Tin
 Material - Plating Termination Tin
 Orientation Straight
 Packaging Type Bag
 Plating min: Mating (µin) 100
 Plating min: Mating (µm) 2.5
 Plating min: Termination (µin) 100
 Plating min: Termination (µm) 2.5
 Tab Thickness N/A
 Tab Width N/A
 Termination Interface: Style Screw or Lug
 Wire Insulation Diameter N/A
 Wire Size AWG 18, 20, 22
 Wire Size mm² 0.35 - 0.80

Electrical

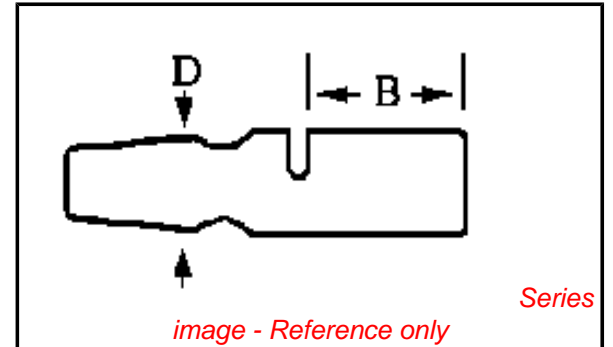
Voltage - Maximum N/A

Material Info

Old Part Number A-169

Reference - Drawing Numbers

Sales Drawing SD-19033-001



EU RoHS

ELV and RoHS Compliant
REACH SVHC Contains SVHC: No
Halogen-Free Status
Halogen-Free

China RoHS



Need more information on product environmental compliance?

Email productcompliance@molex.com
 For a multiple part number RoHS Certificate of Compliance, [click here](#)

Please visit the [Contact Us](#) section for any non-product compliance questions.

Search Parts in this Series

19033Series

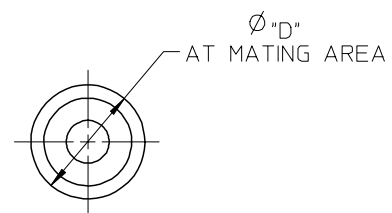
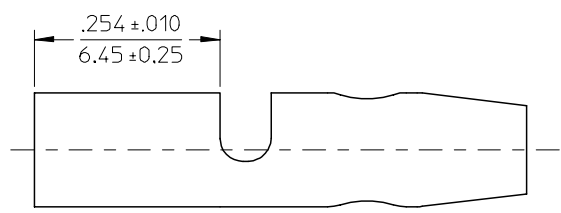
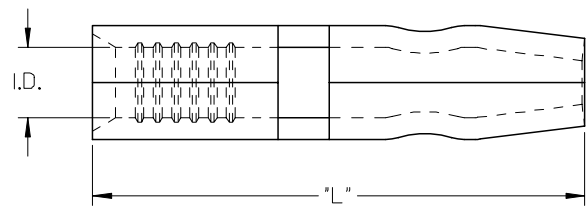
Application Tooling | FAQ

Tooling specifications and manuals are found by selecting the products below. Crimp Height Specifications are then contained in the Application Tooling Specification document.

Global

Description	Product #
Hand Crimp Tool	0640030100
Crimp Head for the AT-200™ Pneumatic Hand Tool	0640070100

MATERIAL NUMBER	ENG. NUMBER	WIRE RANGE AWG	"I.D." MIN	"D" ±.002/0.05	"L" ±.010/0.25
190330001	A-159	22-18	ⓔ .056/1.42	.182/4.62	.754/19.15
190330003	A-169	22-18	ⓔ .056/1.42	.158/4.01	.700/17.78
190330005	B-179	16-14	.084/2.13	.182/4.62	.754/19.15
190330007	B-189	16-14	.084/2.13	.158/4.01	.700/17.78



ⓔ

SALES DRAWING

NOTE(S):
 1. MATERIAL: COPPER .032/0.81 THK
 2. FINISH: ELECTRO-TIN

REMOVE TAPE SPECS. EC NO: ETC2005-0080 DRW:WDMYRICK 2004/11/04 CHKD:RDEROSS 2004/11/04 APPR:RDEROSS 2004/11/04	QUALITY SYMBOLS ▽=0 ▽=0	GENERAL TOLERANCES (UNLESS SPECIFIED)		DIMENSION STYLE	SCALE	DESIGN UNITS	THIRD ANGLE PROJECTION	
			mm	INCH	IN/MM	INCH		
		4 PLACES	±---	±---	DRAWN BY	DATE	TITLE	
		3 PLACES	±---	±---	RMARSHAL	92/09/29	KRIMPTITE	
2 PLACES	±---	±---	CHECKED BY	DATE	MALE BULLET SNAP PLUG			
1 PLACE	±---	±---	RDEROSS	92/09/29	.180 AND .156			
	ANGULAR ±---	°	APPROVED BY	DATE	MOLEX INCORPORATED			
			RDEROSS	92/09/29	MATERIAL NO.	DOCUMENT NO.	SHEET NO.	
			DRAFT WHERE APPLICABLE MUST REMAIN WITHIN DIMENSIONS		SEE CHART	SD-19033-001	1 OF 1	
			SIZE	THIS DRAWING CONTAINS INFORMATION THAT IS PROPRIETARY TO MOLEX INCORPORATED AND SHOULD NOT BE USED WITHOUT WRITTEN PERMISSION				
			B					