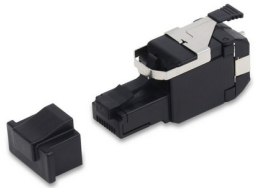


**Product:** [REVConnect 10GX UTP Plugs](#) 



REVConnect 10GX UTP Field Mount Plug, Black

## Product Description

REVConnect 10GX UTP Plugs are available in single packs and 24 bulk packs.

## Technical Specifications

### Product Overview

|                        |   |
|------------------------|---|
| Environmental Space:   | Indoor  |
| Suitable Applications: | 10GX System, TIA Category 6A, ISO Class EA, 10GBASE-T |

### Physical Characteristics (Overall)

|                |   |
|----------------|---|
| Wiring Scheme: | T568A/B                                 |
| Packaging:     | Individually packaged in a plastic bag. |
| Weight:        | 0.016 lbs                               |

### Connectors

#### Materials

| Description      | Material   | Type       |
|------------------|--|------------|
| Front Connection | Copper Clad Flexible PCB, Gold plated contacts over Palladium/Nickel | RJ45       |
| Rear Connection  | Copper Clad Flexible PCB, Gold plated contacts over Palladium/Nickel | REVConnect |
| Connector Body   | Polycarbonate - UL94V-0  |            |

### Electrical Characteristics

|                         |   |
|-------------------------|---|
| Dielectric Strength:    | 1,000V RMS @ 60 Hz for 1 minute (Signals to Ground) |
| Current Rating:         | 1.500 A   |
| Insulation Resistance:  | 500 M-Ohm Minimum                                   |
| Max Contact Resistance: | 20 mOhm   |
| Termination Resistance: | 2.5 mOhm  |

### Temperature Range

|                          |                |
|--------------------------|----------------|
| Installation Temp Range: | -10°C To +60°C |
| Storage Temp Range:      | -40°C To +70°C |
| Operating Temp Range:    | -10°C To +60°C |

### Mechanical Characteristics

|  |                          |
|--|--------------------------|
| Footprint/Type:                          | KeyConnect               |
| Tool Compatibility:                      | RVUTT01 Termination Tool |
| Plug /Jack Compatibility:                | RJ45                     |
| Termination Front Connection:            | Mated Connection         |
| Termination Front Connection Durability: | 750 cycles               |
| Termination Rear Connection:             | Mated Connection         |
| Termination Rear Connection Durability:  | 20 cycles                |
| Cable/Connector Retention:               | 15 lbs.                  |
| Connector/Hardware Retention:            | 20 lbs                   |

|                           |            |
|---------------------------|------------|
| Plug/Connector Retention: | 11.250 lbs |
|---------------------------|------------|

## Standards

|                               |  |
|-------------------------------|--|
| UL Rating:                    | UL94V-0  |
| Data Category:                | Category 6A  |
| Telecommunications Standards: | Category 6A - TIA 568.C.2, Category 6A - ISO/IEC 11801:2002 Ed.2   |
| IEEE Specification:           | Power Over Ethernet (PoE) IEEE 802.3at type 1 and 2 (up to 30W), IEEE802.3bt/D1.7 type 3 and 4 (up to 100W), CISCO UPOE (up to 60W), Power over HDBaseTTM (up to 100W) |
| Other Specification:          | UL 1863, IEC 60603-7, FCC part 68-F  |

## Applicable Environmental and Other Programs

|                                       |            |
|---------------------------------------|------------|
| EU Directive 2002/95/EC (RoHS):       | Yes        |
| EU RoHS Compliance Date (yyyy-mm-dd): | 2006-07-01 |
| MII Order #39 (China RoHS):           | EUP 50     |

## Flammability, LS0H, Toxicity Testing

|                  |                            |
|------------------|----------------------------|
| UL Flammability: | UL2043 Air Handling Spaces |
| Safety Listing:  | c(UL)us Listed             |

## Part Number

|                |  |
|----------------|--|
| Related Parts: | Refer to REVConnect WAP - CAMERA Compatibility Guide |
|----------------|--|

## Variants

| Item #       | Color | UPC          |
|--------------|-------|--------------|
| RVAFPUBK-B24 | Black | 611589205085 |
| RVAFPUBK-S1  | Black | 611589205078 |

## Product Notes

|        |   |
|--------|---|
| Notes: | Please see Installation Guide PX106434. |
|--------|---|

## History

|                      |  |
|----------------------|--|
| Update and Revision: | Revision Number: 0.160 Revision Date: 10-17-2019 |
|----------------------|--|

© 2019 Belden, Inc

All Rights Reserved.

Although Belden makes every reasonable effort to ensure their accuracy at the time of this publication, information and specifications described here in are subject to error or omission and to change without notice, and the listing of such information and specifications does not ensure product availability.

Belden provides the information and specifications herein on an "ASIS" basis, with no representations or warranties, whether express, statutory or implied. In no event will Belden be liable for any damages (including consequential, indirect, incidental, special, punitive, or exemplary damages) whatsoever, even if Belden has been advised of the possibility of such damages, whether in an action under contract, negligence or any other theory, arising out of or in connection with the use, or inability to use, the information or specifications described herein.

All sales of Belden products are subject to Belden's standard terms and conditions of sale.

Belden believes this product to be in compliance with all applicable environmental programs as listed in the data sheet. The information provided is correct to the best of Belden's knowledge, information and belief at the date of its publication. This information is designed only as a general guide for the safe handling, storage, and any other operation of the product itself or the one that it becomes a part of. The Product Disclosure is not to be considered a warranty or quality specification. Regulatory information is for guidance purposes only. Product users are responsible for determining the applicability of legislation and regulations based on their individual usage of the product.