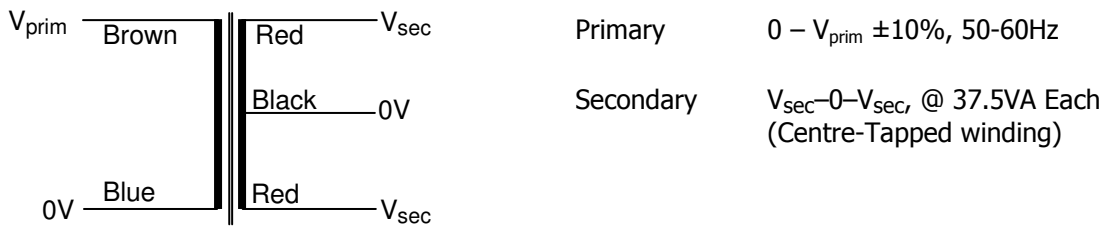


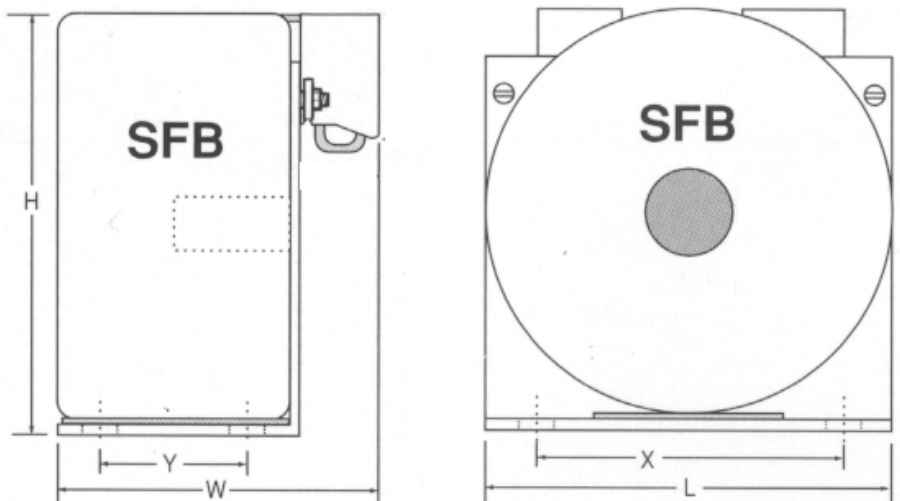
# Datasheet :: Control Panel Transformers :: 75VA



| Nuvotem Talema Part Number | Primary $V_{prim}$ [V] | Full Load $V_{sec}$ [V] | Rated Current Per Sec [A] | No Load $V_{sec}$ [V] |
|----------------------------|------------------------|-------------------------|---------------------------|-----------------------|
| SFB0075-230-12             | 230                    | 12-0-12                 | 3.125                     | 13.40-0-13.40         |
| SFB0075-230-24             | 230                    | 24-0-24                 | 1.563                     | 26.97-0-26.97         |
| SFB0075-230-55             | 230                    | 55-0-55                 | 0.682                     | 61.74-0-61.74         |
| SFB0075-400-12             | 400                    | 12-0-12                 | 3.125                     | 13.40-0-13.40         |
| SFB0075-400-24             | 400                    | 24-0-24                 | 1.563                     | 26.97-0-26.97         |
| SFB0075-400-55             | 400                    | 55-0-55                 | 0.682                     | 61.74-0-61.74         |

**Temperature Class:** Winding Wire (Primary & Secondary) Class H (180 °C)  
 Insulation between windings Class B (130 °C)  
 Connection lead insulation Class A (105 °C)

**Standards:** Designed and manufactured to conform to the requirements of :  
 EN61558 Class II, Non-Short-Circuit-Proof  
 EN60065 Class II (IEC65)  
 EN60950 Class II  
 VDE0550 Class II  
 VDE0551 Class II  
 BS415 Class II



**Physical Data** Dimensions (L x W x H) 80 x 67 x 83mm  
 Mounting Holes (X x Y) 66 x 30mm between centres  
 Approximate Weight 0.95 Kg

**Terminations** Screw terminals suitable for conductors 0.5mm<sup>2</sup> to 4mm<sup>2</sup>, rated at 16A (VDE0551)  
 Material : Polyamide 6/6 (PA 6/6), Meets requirements of VBG4 and VDE0106, part 100, "Finger Safety Guard" VDE0470, Part 1