

Model 3056 RF Manual Step Attenuator

dc to 3.0 GHz
1 Watt

SMA Connectors

RoHS



Features

- /// Rotational Stops Included
- /// Cost Effective OEM Design - Optimized for Wireless Communication System Applications.
- /// Custom Designs Available

Specifications

NOMINAL IMPEDANCE: 50 Ω
FREQUENCY RANGE: dc to 3.0 GHz
ATTENUATION RANGE/STEPS: 0-10 dB in 1.0 dB steps
TEMPERATURE RANGE: -20 °C to +85 °C
POWER RATING: 1 watt **average** @ 25°C ambient temperature, derated linearly to 0.25 watt @ 85°C. 100 watts **peak** (5 μsec pulse width; 0.5 % duty cycle).

ATTENUATION ACCURACY (dB):

Frequency (GHz)	Accuracy
dc - 3.0	± 0.30 dB

MAXIMUM SWR & INSERTION LOSS:

Frequency (GHz)	SWR	Loss (dB)
dc-1.0	1.15	0.15
1.0-2.0	1.20	0.20
2.0-3.0	1.35	0.25

CONNECTOR: SMA female connector per MIL-STD-348 interface dimensions - mate nondestructively with MIL-C-39012 connector.

SHAFT ROTATION: Clockwise for increasing attenuation

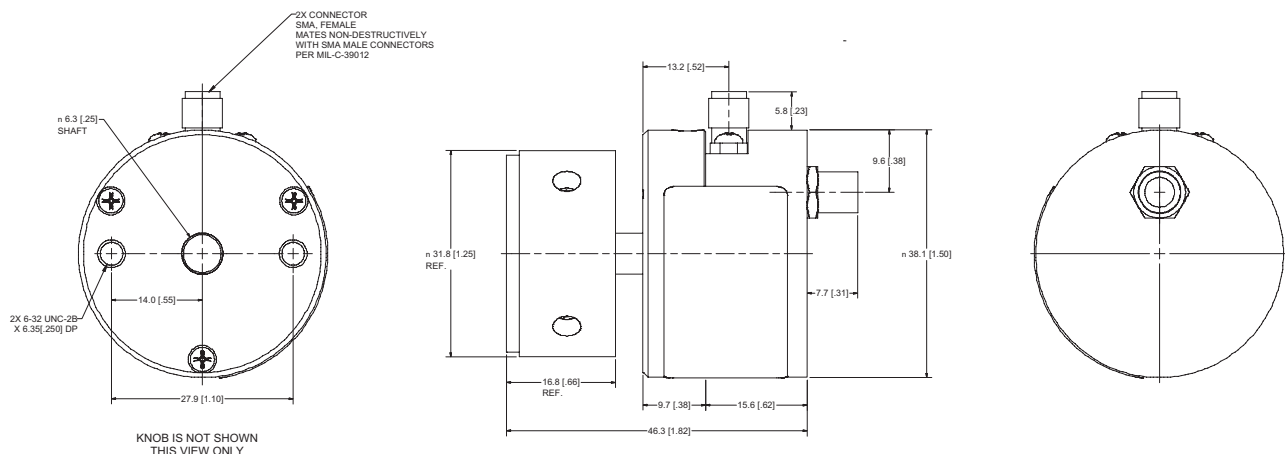
STEP ANGLE: 30.0°

CONSTRUCTION: Machined aluminum body. Knob is included with each unit.

WEIGHT: Net 110 g (4 oz)

NOTE: Minimum quantities apply. Contact factory or local sales representative for more information.

PHYSICAL DIMENSIONS:



NOTE: All dimensions are given in mm (inches) and are maximum, unless otherwise specified.