

Multifunctional Through Hole DIP Switches

Features

Optimized Mechanical Features

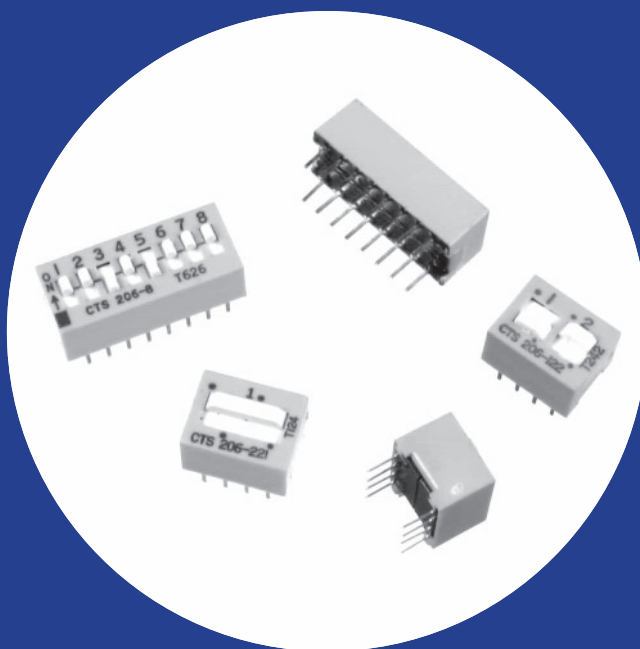
- Standard 2.54mm (.100") x 7.62mm (.300") DIP centers
- Sealed version optional; assures contaminant-free switch operation after wave soldering and cleaning
- Available with low profile, standard, or extended actuators for SPST circuitry.
- Switch contacts elevated above switch base provides dust proof feature.
- Available with SPST, SPDT, DPST, DPDT, 3PST, 4PST circuitry choices.

Optimized Contact System

- Contact wiping action on make and break
- Integral terminal and contact locked into thermoset base
- Electrostatic discharge shield rated to 22 KV

Materials

- Series 206, gold plated contacts for long-term contact corrosion resistance.
- Series 208, tin plated contacts
- UL 94V-0 plastics
- RoHS compliant



Series 206 – Premium Programmable DIP Switch
Series 208 – Economical Programmable DIP Switch

Electrical and Mechanical Specifications

Switch Function

SPST - 1 through 10 and 12 positions
 SPDT&DPST- 1 through 6 positions
 DPDT&4PST - 1 through 3 positions
 3PST - 1 through 4 positions

Switch Contact Resistance

| Switch Series | Initial, max. | End of life, max. |
|---------------|---------------|-------------------|
| 206 | 50 milliohms | 100 milliohms |
| 208 | 100 milliohms | 500 milliohms |

Insulation Resistance

1,000 megohms minimum between insulated terminals

Dielectric Strength

500 VAC for 1 minute between adjacent switches

Nonswitching Rating

100 mA or 50 VDC maximum

Switch Capacitance

5.0 pF maximum between adjacent closed switches

Operating Temperature

- 55°C to +85°C

Actuation Life

Series 206: 10,000 cycles switching 50 mA @ 24 VDC
 Series 208: 2,000 cycles switching 50 mA @ 24 VDC

Allowable Solder Time

Wave soldering up to 5 seconds at 260°C

Vibration

Per MIL-STD-202F, method 204D, condition B(.06" or 15G's between 10HZ to 2 KHZ) with no contact inconsistencies greater than 1 microsecond

Shock

Per MIL-STD-202F, method 213B, condition A(50G's) with no contact inconsistencies greater than 1 microsecond

Sealing

Bottom epoxy seal optional
 Top tape seal optional

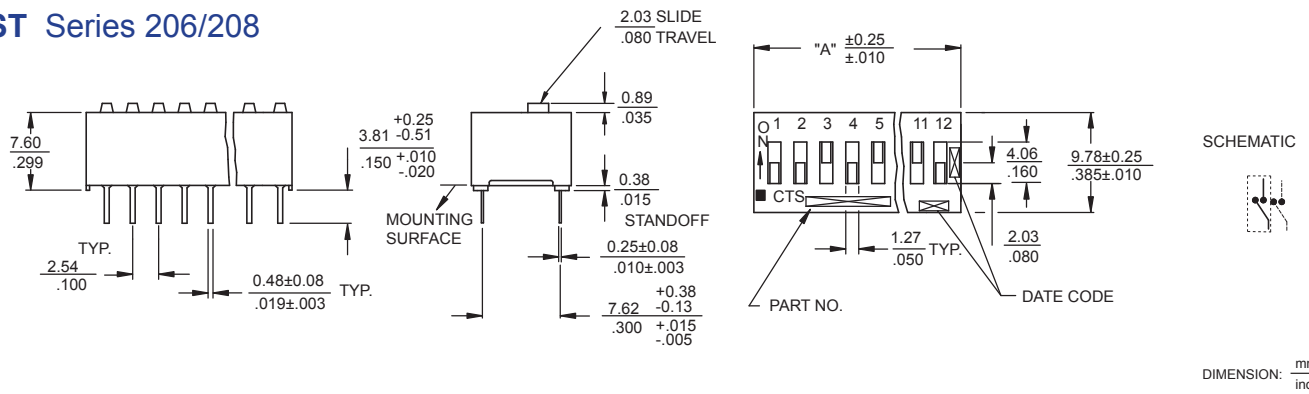
Marking

Special side or top marking available-consult CTS

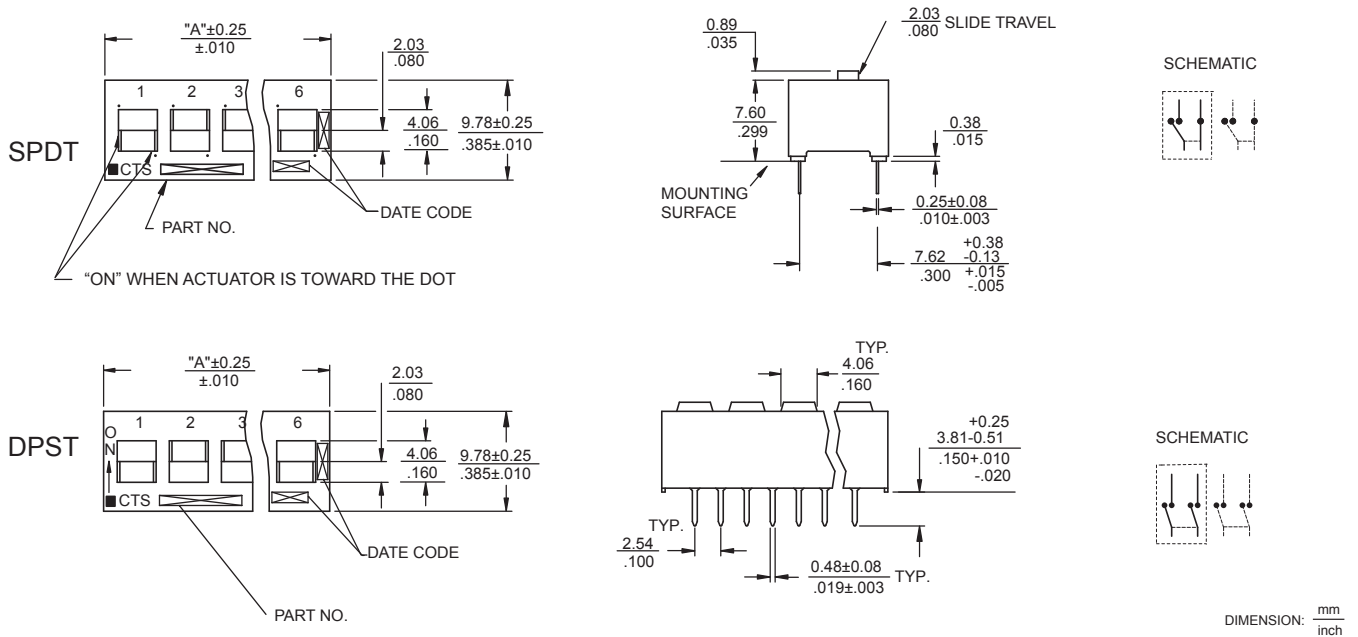
Packaging

Standard : Anti-Static tube packaging

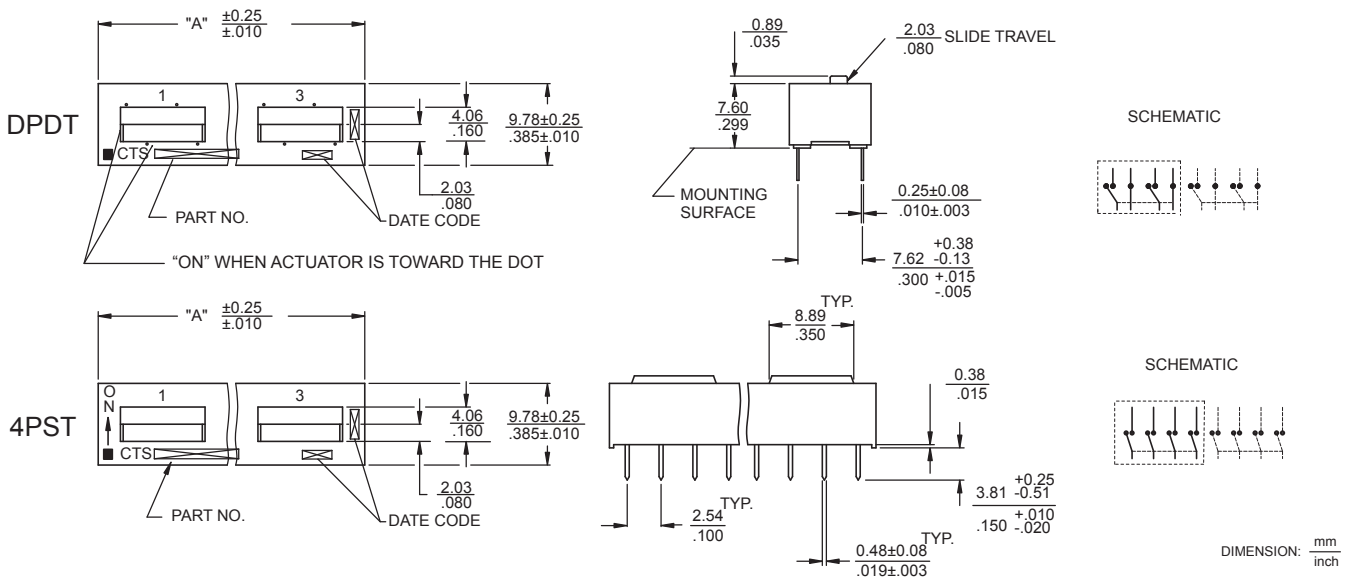
SPST Series 206/208



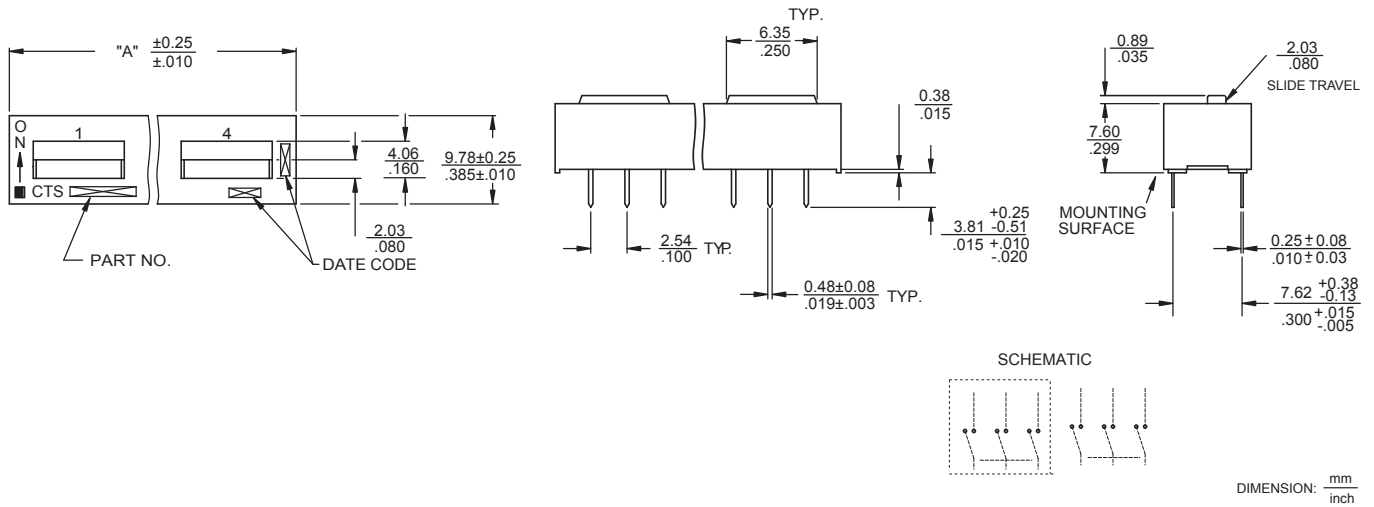
SPDT / DPST Series 206/208



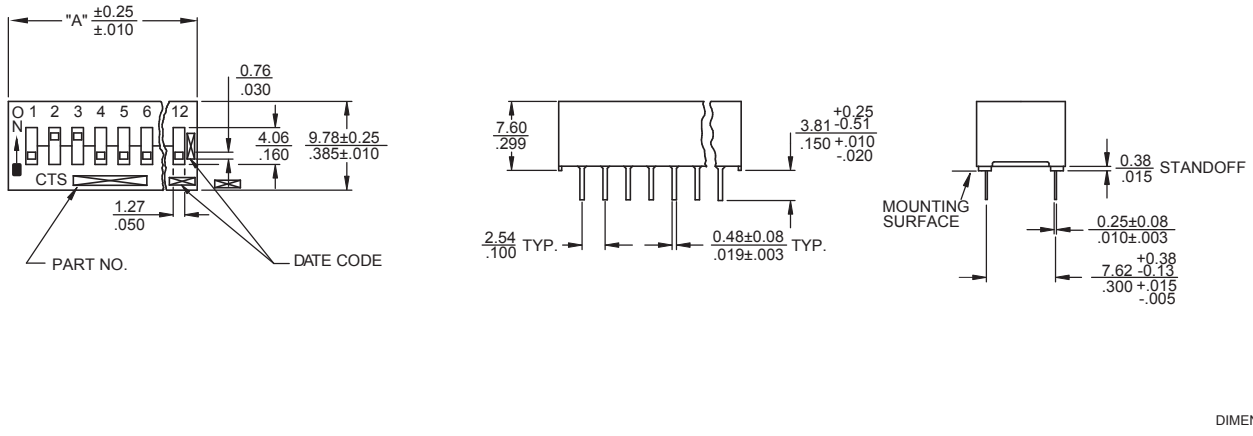
DPDT / 4PST Series 206/208



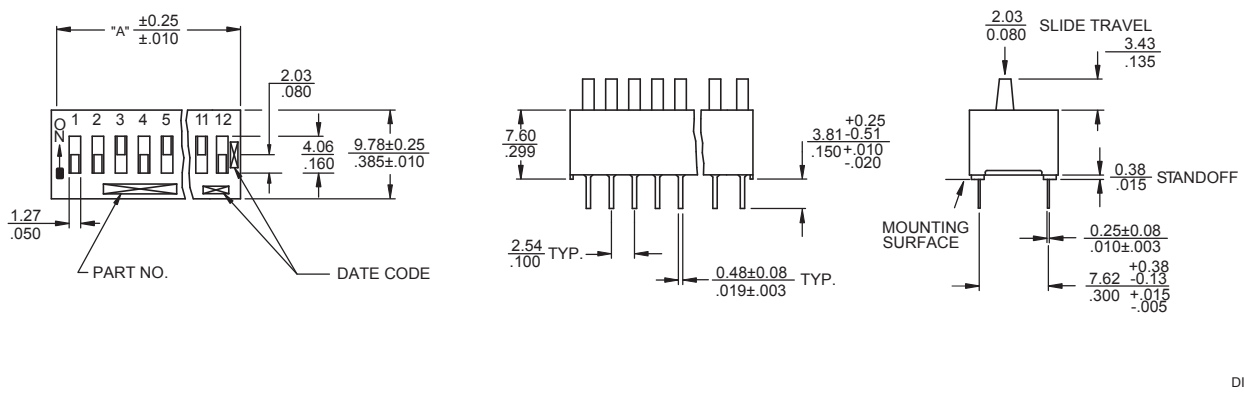
3PST Series 206/208



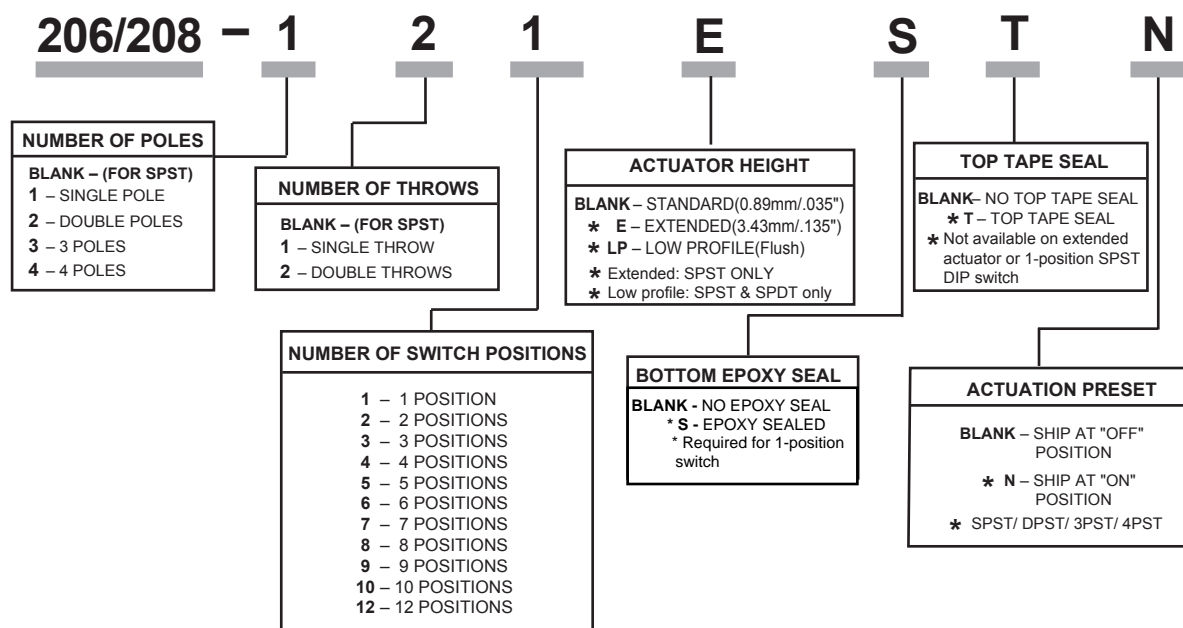
Low Profile Actuators Series 206/208 (SPST & SPDT only)



Extended Actuators Series 206/208 (SPST)



Ordering Information



| "A" Overall Dimensions | Number of Switch Positions | Actuation | Part Number | Both Bottom and Top Sealed | Low Profile Both Bottom and Top Sealed |
|------------------------|----------------------------|-----------|-------------|----------------------------|--|
| 3.96 / .156 | 1 | SPST | 206/208-1S | - | - |
| 7.26 / .286 | 2 | SPST | 206/208-2 | 206/208-2ST | 206/208-2LPST |
| 9.80 / .386 | 3 | SPST | 206/208-3 | 206/208-3ST | 206/208-3LPST |
| 12.34 / .486 | 4 | SPST | 206/208-4 | 206/208-4ST | 206/208-4LPST |
| 14.88 / .586 | 5 | SPST | 206/208-5 | 206/208-5ST | 206/208-5LPST |
| 17.42 / .686 | 6 | SPST | 206/208-6 | 206/208-6ST | 206/208-6LPST |
| 19.96 / .786 | 7 | SPST | 206/208-7 | 206/208-7ST | 206/208-7LPST |
| 22.50 / .886 | 8 | SPST | 206/208-8 | 206/208-8ST | 206/208-8LPST |
| 25.04 / .986 | 9 | SPST | 206/208-9 | 206/208-9ST | 206/208-9LPST |
| 27.58 / 1.086 | 10 | SPST | 206/208-10 | 206/208-10ST | 206/208-10LPST |
| 32.66 / 1.286 | 12 | SPST | 206/208-12 | 206/208-12ST | 206/208-12LPST |
| 7.26 / .286 | 1 | SPDT | 206-121 | 206-121ST | 206/208-121LPST |
| 12.34 / .486 | 2 | SPDT | 206-122 | 206-122ST | 206/208-122LPST |
| 17.42 / .686 | 3 | SPDT | 206-123 | 206-123ST | 206/208-123LPST |
| 22.50 / .886 | 4 | SPDT | 206-124 | 206-124ST | 206/208-124LPST |
| 27.58 / 1.086 | 5 | SPDT | 206-125 | 206-125ST | 206/208-125LPST |
| 32.66 / 1.286 | 6 | SPDT | 206-126 | 206-126ST | 206/208-126LPST |
| 7.26 / .286 | 1 | DPST | 206-211 | 206-211ST | |
| 12.34 / .486 | 2 | DPST | 206-212 | 206-212ST | |
| 17.42 / .686 | 3 | DPST | 206-213 | 206-213ST | |
| 22.50 / .886 | 4 | DPST | 206-214 | 206-214ST | |
| 27.58 / 1.086 | 5 | DPST | 206-215 | 206-215ST | |
| 32.66 / 1.286 | 6 | DPST | 206-216 | 206-216ST | |
| 12.34 / .486 | 1 | DPDT | 206-221 | 206-221ST | |
| 22.50 / .886 | 2 | DPDT | 206-222 | 206-222ST | |
| 32.66 / 1.286 | 3 | DPDT | 206-223 | 206-223ST | |
| 9.80 / .386 | 1 | 3PST | 206-311 | 206-311ST | |
| 17.42 / .686 | 2 | 3PST | 206-312 | 206-312ST | |
| 25.04 / .986 | 3 | 3PST | 206-313 | 206-313ST | |
| 32.66 / 1.286 | 4 | 3PST | 206-314 | 206-314ST | |
| 12.34 / .486 | 1 | 4PST | 206-411 | 206-411ST | |
| 22.50 / .886 | 2 | 4PST | 206-412 | 206-412ST | |
| 32.66 / 1.286 | 3 | 4PST | 206-413 | 206-413ST | |