

PLEASE CHECK WWW.MOLEX.COM FOR LATEST PART INFORMATION

Part Number: [0009623072](#)
Status: **Active**
Description: 3.96mm (.156") Pitch KK® PC Board Connector, Bottom Entry, Nylon Connector, 0.38µm (15µ") Gold (Au) Selective, 7 Circuits

Documents:

[3D Model](#) [Product Specification PS-08-50 \(PDF\)](#)
[Drawing \(PDF\)](#) [RoHS Certificate of Compliance \(PDF\)](#)

Agency Certification

UL E29179

General

Product Family PCB Receptacles
 Series [2145](#)
 Application Board-to-Board
 Product Name KK®

Physical

Circuits (Loaded) 7
 Color - Resin Natural
 Flammability 94V-2
 Glow-Wire Compliant No
 Lock to Mating Part Yes
 Material - Plating Mating Gold
 Material - Plating Termination Tin
 Material - Resin Nylon
 Number of Rows 1
 Orientation Bottom Entry
 PC Tail Length (in) 0.160 In
 PC Tail Length (mm) 4.06 mm
 PCB Locator No
 PCB Retention None
 PCB Thickness Recommended (in) 0.062 In
 PCB Thickness Recommended (mm) 1.60 mm
 Packaging Type Bag
 Pitch - Mating Interface (in) 0.156 In
 Pitch - Mating Interface (mm) 3.96 mm
 Plating min: Mating (µin) 15
 Plating min: Mating (µm) 0.375
 Plating min: Termination (µin) 100
 Plating min: Termination (µm) 2.5
 Polarized to PCB No
 Temperature Range - Operating 0°C to +75°C
 Termination Interface: Style Through Hole

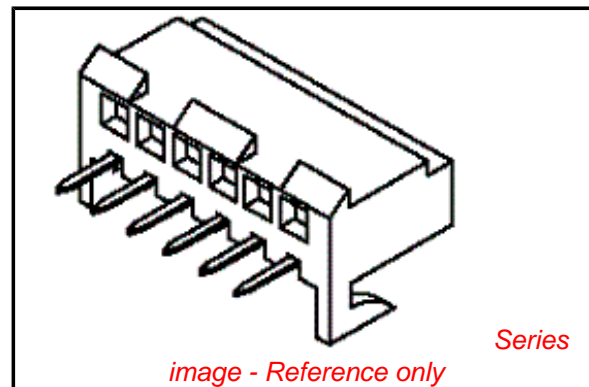
Electrical

Current - Maximum per Contact 5A
 Voltage - Maximum 250V

Solder Process Data

Duration at Max. Process Temperature (seconds) 5
 Lead-free Process Capability Wave Capable (TH only)
 Max. Cycles at Max. Process Temperature 1
 Process Temperature max. C 235

Material Info



EU RoHS

**ELV and RoHS
 Compliant**
REACH SVHC
 Not Reviewed
**Halogen-Free
 Status**
Not Reviewed

China RoHS



**Need more information on product
 environmental compliance?**

Email productcompliance@molex.com
 For a multiple part number RoHS Certificate of
 Compliance, [click here](#)

Please visit the [Contact Us](#) section for any
 non-product compliance questions.

Search Parts in this Series
[2145Series](#)

Old Part Number

A-2145-BA07H-208

Reference - Drawing Numbers

Product Specification

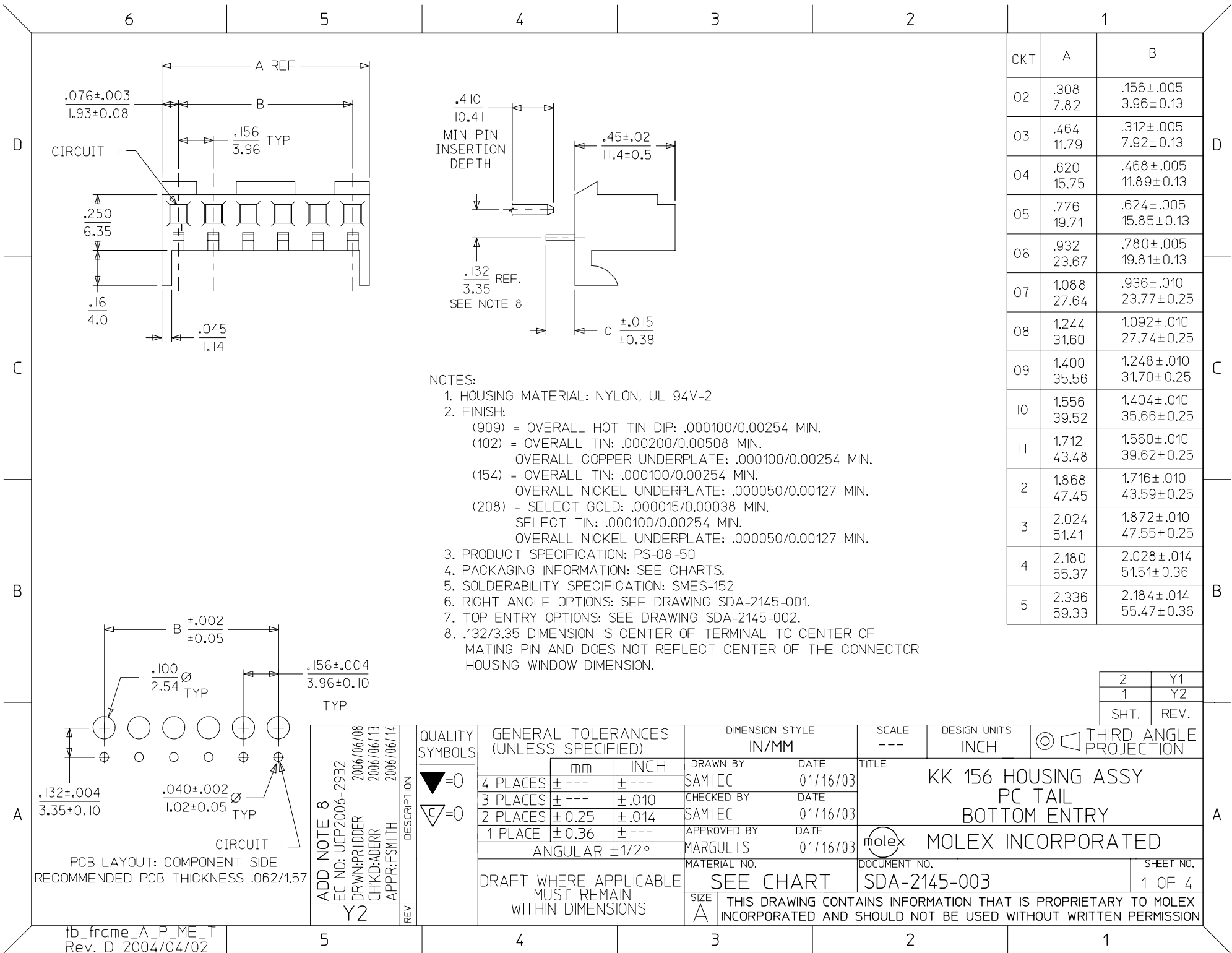
PS-08-50

Sales Drawing

SDA-2145-003

This document was generated on 04/14/2010

PLEASE CHECK WWW.MOLEX.COM FOR LATEST PART INFORMATION



CKT	A	B
02	.308 7.82	.156±.005 3.96±0.13
03	.464 11.79	.312±.005 7.92±0.13
04	.620 15.75	.468±.005 11.89±0.13
05	.776 19.71	.624±.005 15.85±0.13
06	.932 23.67	.780±.005 19.81±0.13
07	1.088 27.64	.936±.010 23.77±0.25
08	1.244 31.60	1.092±.010 27.74±0.25
09	1.400 35.56	1.248±.010 31.70±0.25
10	1.556 39.52	1.404±.010 35.66±0.25
11	1.712 43.48	1.560±.010 39.62±0.25
12	1.868 47.45	1.716±.010 43.59±0.25
13	2.024 51.41	1.872±.010 47.55±0.25
14	2.180 55.37	2.028±.014 51.51±0.36
15	2.336 59.33	2.184±.014 55.47±0.36

- NOTES:
- HOUSING MATERIAL: NYLON, UL 94V-2
 - FINISH:
 - (909) = OVERALL HOT TIN DIP: .000100/0.00254 MIN.
 - (102) = OVERALL TIN: .000200/0.00508 MIN.
 - OVERALL COPPER UNDERPLATE: .000100/0.00254 MIN.
 - (154) = OVERALL TIN: .000100/0.00254 MIN.
 - OVERALL NICKEL UNDERPLATE: .000050/0.00127 MIN.
 - (208) = SELECT GOLD: .000015/0.00038 MIN.
 - SELECT TIN: .000100/0.00254 MIN.
 - OVERALL NICKEL UNDERPLATE: .000050/0.00127 MIN.
 - PRODUCT SPECIFICATION: PS-08-50
 - PACKAGING INFORMATION: SEE CHARTS.
 - SOLDERABILITY SPECIFICATION: SMES-152
 - RIGHT ANGLE OPTIONS: SEE DRAWING SDA-2145-001.
 - TOP ENTRY OPTIONS: SEE DRAWING SDA-2145-002.
 - .132/3.35 DIMENSION IS CENTER OF TERMINAL TO CENTER OF MATING PIN AND DOES NOT REFLECT CENTER OF THE CONNECTOR HOUSING WINDOW DIMENSION.

2	Y1
1	Y2
SHT.	REV.

ADD NOTE 8 EC NO: UCP2006-2932 DRWN:PRIDDER 2006/06/08 CHKD:ADERR 2006/06/13 APPR:FSMITH 2006/06/14 Y2	QUALITY SYMBOLS ▽=0 ▽=0	GENERAL TOLERANCES (UNLESS SPECIFIED)		DIMENSION STYLE IN/MM		SCALE ---	DESIGN UNITS INCH	THIRD ANGLE PROJECTION	
		4 PLACES	± ---	± ---	DRAWN BY	DATE	TITLE KK 156 HOUSING ASSY PC TAIL BOTTOM ENTRY		
		3 PLACES	± ---	± .010	CHECKED BY	DATE			
		2 PLACES	± 0.25	± .014	SAMIEC	01/16/03	APPROVED BY DATE MARGULIS 01/16/03		
1 PLACE	± 0.36	± ---	ANGULAR ±1/2°		MATERIAL NO. SEE CHART		DOCUMENT NO. SDA-2145-003	SHEET NO. 1 OF 4	
DRAFT WHERE APPLICABLE MUST REMAIN WITHIN DIMENSIONS			SIZE A		THIS DRAWING CONTAINS INFORMATION THAT IS PROPRIETARY TO MOLEX INCORPORATED AND SHOULD NOT BE USED WITHOUT WRITTEN PERMISSION				



KK 156 PCB ASSY 2-15 CKT

2145 BOTTOM ENTRY SERIES

CATALOG PRODUCTS

OPTIONS	RAMPS	YES	RAMPS	YES
	HOOKS:	YES	HOOKS:	YES
	COLOR:	WHITE	COLOR:	WHITE
	MOLD VOID:	NONE	MOLD VOID:	NONE
	TERM MATL:	PHOS BRONZE	TERM MATL:	PHOS BRONZE
	CONTACT:	STANDARD	CONTACT:	STANDARD
	PC TAIL (C):	.160 / 4.06	PC TAIL (C):	.160 / 4.06
	PLT CODE:	102 – TIN	PLT CODE:	208 – 15 GOLD
	TERM VOID:	NONE	TERM VOID:	NONE
	PACKAGING:	TRAY PK-2145-001	PACKAGING:	TRAY PK-2145-001
Ckt	Material No	Material No		
2	09-62-6024	09-62-4028		
3	09-62-6034	09-62-4038		
4	09-62-6044	09-62-4048		
5	09-62-6054	09-62-4058		
6	09-62-6064	09-62-4068		
7	09-62-6074	09-62-4078		
8	09-62-6084	09-62-4088		
9	09-62-6094	09-62-4098		
10	09-62-6104	09-62-4108		
11	09-62-6114	09-62-4118		
12	09-62-6124	09-62-4128		
13	09-62-6134	09-62-4138		
14	09-62-6144	09-62-4148		
15	09-62-6154	09-62-4158		

REV: Y1	REV FORMAT UCP2004-2560 4/12/2004 SAMIEC	TITLE: KK 156 PCB ASSY 2145 BOTTOM ENTRY SERIES	<u>SHEET No.</u> - 2 -
<u>DOCUMENT NUMBER:</u> SDA-2145-003		<u>CREATED / REVISED BY:</u> SAMIEC	<u>CHECKED BY:</u> SAMIEC
		<u>APPROVED BY:</u> MARGULIS	



KK 156 PCB ASSY 2-15 CKT

2145 BOTTOM ENTRY SERIES

CUSTOM PRODUCTS

OPTIONS	RAMPS	YES	RAMPS	YES	RAMPS	YES	RAMPS	YES
	HOOKS:	YES	HOOKS:	YES	HOOKS:	YES	HOOKS:	YES
	COLOR:	WHITE	COLOR:	WHITE	COLOR:	WHITE	COLOR:	WHITE
	MOLD VOID:	NONE	MOLD VOID:	NONE	MOLD VOID:	NONE	MOLD VOID:	NONE
	TERM MATL:	PHOS BRONZE	TERM MATL:	BRASS	TERM MATL:	BRASS	TERM MATL:	BRASS
	CONTACT:	STANDARD	CONTACT:	STANDARD	CONTACT:	STANDARD	CONTACT:	STANDARD
	PC TAIL (C):	.160 / 4.06	PC TAIL (C):	.160 / 4.06	PC TAIL (C):	.160 / 4.06	PC TAIL (C):	.126 / 3.20
	PLT CODE:	P909 – TIN	PLT CODE:	P909 – TIN	PLT CODE:	208 – 15 GOLD	PLT CODE:	P909 – TIN
	TERM VOID:	NONE	TERM VOID:	NONE	TERM VOID:	NONE	TERM VOID:	NONE
	PACKAGING:	TRAY PK-2145-001	PACKAGING:	TRAY PK-2145-001	PACKAGING:	TRAY PK-2145-001	PACKAGING:	TRAY PK-2145-001
Ckt	Material No		Material No		Material No		Material No	
2	09-52-2028		09-52-3022		09-62-3022		09-52-5022	
3	09-52-2038		09-52-3032		09-62-3032		09-52-5032	
4	09-52-2048		09-52-3042		09-62-3042		09-52-5042	
5	09-52-2058		09-52-3052		09-62-3052		09-52-5052	
6	09-52-2068		09-52-3062		09-62-3062		09-52-5062	
7	09-52-2078		09-52-3072		09-62-3072		09-52-5072	
8	09-52-2088		09-52-3082		09-62-3082		09-52-5082	
9	09-52-2098		09-52-3092		09-62-3092		09-52-5092	
10	09-52-2108		09-52-3102		09-62-3102		09-52-5102	
11	09-52-2118		09-52-3112		09-62-3112		09-52-5112	
12	09-52-2128		09-52-3122		09-62-3122		09-52-5122	
13	09-52-2138		09-52-3132		09-62-3132		09-52-5132	
14	09-52-2148		09-52-3142		09-62-3142		09-52-5142	
15	09-52-2158		09-52-3152		09-62-3152		09-52-5152	

REV:	REV FORMAT UCP2004-2560 4/12/2004 SAMIEC	<u>TITLE:</u> <h2 style="text-align: center;">KK 156 PCB ASSY</h2> <h2 style="text-align: center;">2145 BOTTOM ENTRY SERIES</h2>	<u>SHEET No.</u> <h3 style="text-align: center;">- 3 -</h3>
<u>DOCUMENT NUMBER:</u>	SDA-2145-003	<u>CREATED / REVISED BY:</u>	SAMIEC
		<u>CHECKED BY:</u>	SAMIEC
		<u>APPROVED BY:</u>	MARGULIS



KK 156 PCB ASSY 2-15 CKT

2145 BOTTOM ENTRY SERIES

Assy Proc:	BOTTOM ENTRY
Housing No:	2145-N-AN
Terminal No:	6298-154
Dim C:	.160 / 4.06
Plating:	154-TIN
Packaging:	PK-2145-001
Voids:	NO

Assy Proc:	
Housing No:	
Terminal No:	
Dim C:	
Plating:	
Packaging:	
Voids:	

Assy Proc:	
Housing No:	
Terminal No:	
Dim C:	
Plating:	
Packaging:	
Voids:	

Assy Proc:	
Housing No:	
Terminal No:	
Dim C:	
Plating:	
Packaging:	
Voids:	

Ckts	Material No	Engineer Number	Material No	Engineer Number	Material No	Engineer Number	Material No	Engineer Number
2	50-30-4405	A-2145-BA02L-154						
3	50-30-4406	A-2145-BA03L-154						
4	50-30-4407	A-2145-BA04L-154						
5	50-30-4408	A-2145-BA05L-154						
6	50-30-4409	A-2145-BA06L-154						
7	50-30-4411	A-2145-BA07L-154						
8	50-30-4412	A-2145-BA08L-154						
9	50-30-4413	A-2145-BA09L-154						
10	50-30-4414	A-2145-BA10L-154						
11	50-30-4415	A-2145-BA11L-154						
12	50-30-4416	A-2145-BA12L-154						
13	50-30-4417	A-2145-BA13L-154						
14	50-30-4418	A-2145-BA14L-154						
15	50-30-4419	A-2145-BA15L-154						

REV: Y1	REV FORMAT UCP2004-2560 4/12/2004 SAMIEC	TITLE: KK 156 PCB ASSY 2145 BOTTOM ENTRY SERIES	SHEET No. - 4 -
DOCUMENT NUMBER: SDA-2145-003		CREATED / REVISED BY: SAMIEC	CHECKED BY: SAMIEC
		APPROVED BY: MARGULIS	