



**Data Sheet**

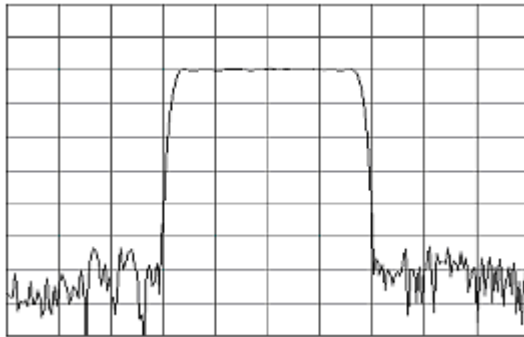


Product Category: IF SAW Filter

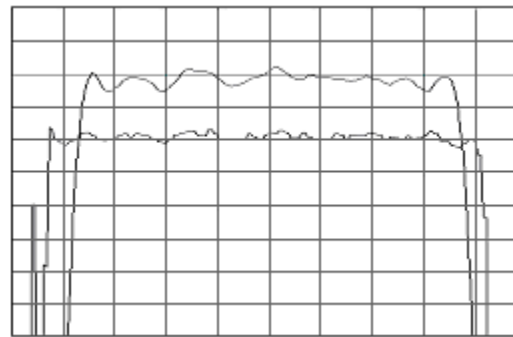
Part Number: 820-IF70.0M-AA      Package: 20.2 x 12.6 Thru Hole      Application: Base Station & Repeater      Last Modified: May 02 2003

TYPE :  
70.0 MHz Bandpass Filter  
10.3 MHz Bandwidth

PART NUMBER :  
**820-IF70.0M-AA**



Horizontal : 3.0 MHz/Div  
Vertical : 10 dB/Div



Horizontal : 1.4 MHz/Div  
Vertical : 1 dB/Div  
Vertical : 100 ns/Div

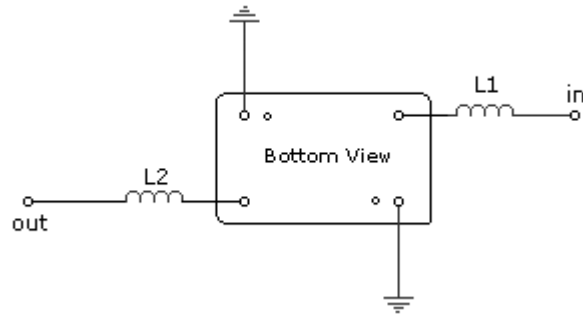
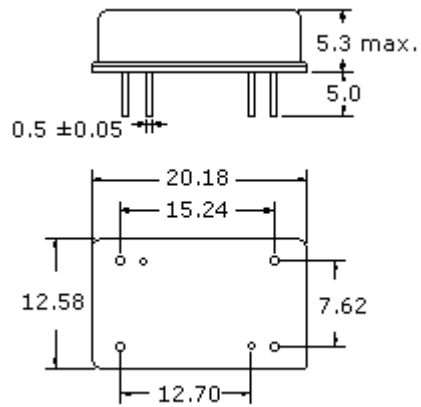
**OPERATING CONDITIONS / ELECTRICAL CHARACTERISTICS**

PARAMETERS	Minimum	Typical	Maximum	Units
<b>Center Frequency</b>	69.94	70.00	70.06	MHz
<b>Insertion Loss</b>	-	21.0	23.0	dB
<b>1dB Bandwidth</b>	10.00	10.15	-	MHz
<b>3dB Bandwidth</b>	10.30	10.50	-	MHz
<b>40dB Bandwidth</b>	-	11.95	12.10	MHz
<b>Passband Ripple</b>	-	0.7	1.0	dB
<b>Group Delay Variation</b>	-	50	100	nsec
<b>Absolute Delay</b>	-	2.31	-	µsec
<b>Ultimate Rejection</b>	50	55	-	dB
<b>Substrate Material</b>	-	LN	-	-
<b>Ambient Temperature</b>	-	25	-	°C

\* Custom SAW IF Filters available. Contact Oscilent for assistance.

**PACKAGE OUTLINE (mm)**

**TEST FIXTURE**



L1 = 47nH

L2 = 47nH

Source/Load Impedance = 50 ohms

**Oscilent Corporation** - CALL **949.252.0522**

17962 Sky Park Circle, Building D, Irvine, CA 92614, USA  
 Fax: 949.252.0599, E-Mail: Sales@Oscilent.com

**Part No.:** 820-IF70.0M-AA