

7

6

5

4

3

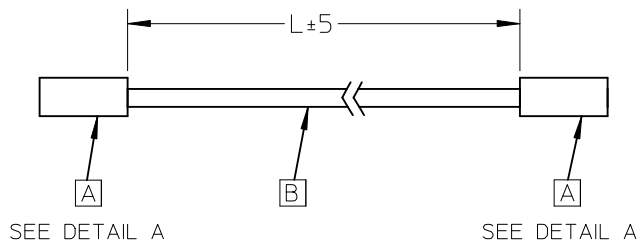
2

1

## REVISIONS

EC NO	DATE	REV	DESCRIPTION	CHANGER
	13.11.15	A	INITIAL RELEASE.	Andrew
CY15-6943	15.06.10	B	CHG 5011932000 TO 5011933000 FOR 688014040&688014041	Andrew

MATERIAL NO.	TITLE	L(mm)	ITEM	DESCRIPTION	Q'TY
688014059	.093" Male 300mm cable	300	A	TERMINAL 14-20AWG 02092101	2
			B	WIRE UL1061 18AWG BLACK	A/R
688014058	.093" Male 150mm cable	150	A	TERMINAL 14-20AWG 02092101	2
			B	WIRE UL1061 18AWG BLACK	A/R
688014061	.093" Female 300mm cable	300	A	TERMINAL 14-20AWG 02091102	2
			B	WIRE UL1061 18AWG BLACK	A/R
688014060	.093" Female 150mm cable	150	A	TERMINAL 14-20AWG 02091102	2
			B	WIRE UL1061 18AWG BLACK	A/R
688014055	.062" Male 300mm cable	300	A	TERMINAL 18-24AWG 02062101	2
			B	WIRE UL1061 22AWG BLACK	A/R
688014054	.062" Male 150mm cable	150	A	TERMINAL 18-24AWG 02062101	2
			B	WIRE UL1061 22AWG BLACK	A/R
688014057	.062" Female 300mm cable	300	A	TERMINAL 18-24AWG 02061101	2
			B	WIRE UL1061 22AWG BLACK	A/R
688014056	.062" Female 150mm cable	150	A	TERMINAL 18-24AWG 02061101	2
			B	WIRE UL1061 22AWG BLACK	A/R
688014037	MLX Male 300mm cable	300	A	TERMINAL 14-20AWG 02082003	2
			B	WIRE UL1061 18AWG BLACK	A/R
688014036	MLX Male 150mm cable	150	A	TERMINAL 14-20AWG 02082003	2
			B	WIRE UL1061 18AWG BLACK	A/R
688014048	C-Grid III Female 150mm cable	150	A	TERMINAL 22-24AWG 901190109	2
			B	WIRE UL1061 22AWG BLACK	A/R
688014049	C-Grid III Female 300mm cable	300	A	TERMINAL 22-24AWG 901190109	2
			B	WIRE UL1061 22AWG BLACK	A/R
688014046	Duraclick Female 150mm cable	150	A	TERMINAL 24-30AWG 502128000	2
			B	WIRE UL1061 26AWG BLACK	A/R
688014047	Duraclick Female 300mm cable	300	A	TERMINAL 24-30AWG 502128000	2
			B	WIRE UL1061 26AWG BLACK	A/R



EC NO: SE62864610  
 DRWN: JXIA004 2015/06/10  
 CHKD: JDUAN 2015/06/10  
 APPR: YXZOU 2015/06/11

QUALITY SYMBOLS  
 $\nabla_F = 0$   
 $\nabla_F = 0$   
 $\nabla_F = 0$

GENERAL TOLERANCES (UNLESS SPECIFIED)

	mm	INCH
4 PLACES	± ---	± ---
3 PLACES	± ---	± ---
2 PLACES	± ---	± ---
1 PLACE	± ---	± ---
0 PLACE	± ---	± ---

ANGULAR ± ---°  
 DRAFT WHERE APPLICABLE  
 MUST REMAIN  
 WITHIN DIMENSIONS

DIMENSION STYLE  
 MM ONLY

DRAWN BY	DATE
JXIA004	2015/06/10
CHECKED BY	DATE
JDUAN	2015/06/10
APPROVED BY	DATE
YXZOU	2015/06/11

MATERIAL NO.  
 SEE TABLE

SCALE  
 ---

DESIGN UNITS  
 METRIC

THIRD ANGLE PROJECTION

TITLE  
 SEE TABLE

**molex**

DOCUMENT NO.  
 SD-68801-115

SHEET NO.  
 1 OF 2

6

5

4

3

2

1

7

6

5

4

3

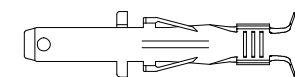
2

1

MATERIAL NO.	TITLE	L(mm)	ITEM	DESCRIPTION	Q'TY
688014038	MLX Female 150mm cable	150	A	TERMINAL 14-20AWG 02081001	2
			B	WIRE UL1061 18AWG BLACK	A/R
688014039	MLX Female 300mm cable	300	A	TERMINAL 14-20AWG 02081001	2
			B	WIRE UL1061 18AWG BLACK	A/R
688014042	Picoclasp Single row 150mm cable	150	A	TERMINAL 28-32AWG 5013340000	2
			B	WIRE UL1061 28AWG BLACK	A/R
688014043	Picoclasp Single row 300mm cable	300	A	TERMINAL 28-32AWG 5013340000	2
			B	WIRE UL1061 28AWG BLACK	A/R
688014040	Picoclasp Dual row 150mm cable	150	A	TERMINAL 28-32AWG 5011933000	2
			B	WIRE UL1061 28AWG BLACK	A/R
688014041	Picoclasp Dual row 300mm cable	300	A	TERMINAL 28-32AWG 5011933000	2
			B	WIRE UL1061 28AWG BLACK	A/R
688014052	Sabre Female 150mm cable	150	A	TERMINAL 14-16AWG 433751001	2
			B	WIRE UL1061 16AWG BLACK	A/R
688014053	Sabre Female 300mm cable	300	A	TERMINAL 14-16AWG 433751001	2
			B	WIRE UL1061 16AWG BLACK	A/R
688014050	Sabre Male 150mm cable	150	A	TERMINAL 14-16AWG 431782002	2
			B	WIRE UL1061 16AWG BLACK	A/R
688014051	Sabre Male 300mm cable	300	A	TERMINAL 14-16AWG 431782002	2
			B	WIRE UL1061 16AWG BLACK	A/R
688014044	Sherlock Female 150mm cable	150	A	TERMINAL 24-30AWG 502128000	2
			B	WIRE UL1061 26AWG BLACK	A/R
688014045	Sherlock Female 300mm cable	300	A	TERMINAL 24-30AWG 502128000	2
			B	WIRE UL1061 26AWG BLACK	A/R



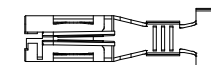
2082003



431782002



2081001



433751001



5013340000



2062101



5011932000



2061101



502128000



2092101



901190109



2091102

B

B

## NOTES

1. THIS PRODUCT MUST MEET EU 2011/65/EU ROHS COMPLIANCE.

DETAIL A  
TERMINAL FIGURE

EC NO: SE628E/4630305 DRWN: JXIA004 CHKD: JDUAN APPR: YXZOU	DESCRIPTION REV	QUALITY SYMBOLS F=0 F=0 F=0	GENERAL TOLERANCES (UNLESS SPECIFIED)		DIMENSION STYLE MM ONLY		SCALE ----	DESIGN UNITS METRIC	THIRD ANGLE PROJECTION
			mm	INCH	DRAWN BY JXIA004	DATE 2015/06/10	TITLE SEE TABLE		
B	REV	F=0	4 PLACES	± ---	± ---	CHECKED BY JDUAN	DATE 2015/06/10		
			3 PLACES	± ---	± ---	APPROVED BY YXZOU	DATE 2015/06/11		
			2 PLACES	± ---	± ---			DOCUMENT NO. SD-68801-115	SHEET NO. 2 OF 2
			1 PLACE	± ---	± ---				
			0 PLACE	± ---	± ---				
			ANGULAR ± --- °		MATERIAL NO. SEE TABLE				
			DRAFT WHERE APPLICABLE MUST REMAIN WITHIN DIMENSIONS		SIZE A 4		THIS DRAWING CONTAINS INFORMATION THAT IS PROPRIETARY TO MOLEX INCORPORATED AND SHOULD NOT BE USED WITHOUT WRITTEN PERMISSION		

6

5

4

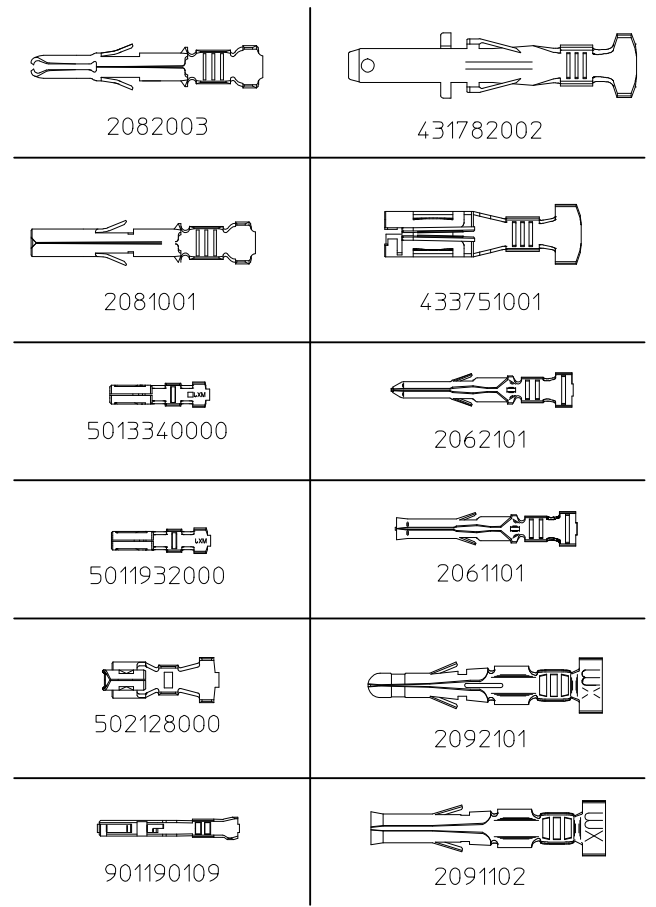
3

2

1

7 6 5 4 3 2 1

MATERIAL NO.	TITLE	L(mm)	ITEM	DESCRIPTION	Q'TY
688014038	MLX Female 150mm cable	150	A	TERMINAL 14-20AWG 02081001	2
			B	WIRE UL1061 18AWG BLACK	A/R
688014039	MLX Female 300mm cable	300	A	TERMINAL 14-20AWG 02081001	2
			B	WIRE UL1061 18AWG BLACK	A/R
688014042	Picoclasp Single row 150mm cable	150	A	TERMINAL 28-32AWG 5013340000	2
			B	WIRE UL1061 28AWG BLACK	A/R
688014043	Picoclasp Single row 300mm cable	300	A	TERMINAL 28-32AWG 5013340000	2
			B	WIRE UL1061 28AWG BLACK	A/R
688014040	Picoclasp Dual row 150mm cable	150	A	TERMINAL 28-32AWG 5011932000	2
			B	WIRE UL1061 28AWG BLACK	A/R
688014041	Picoclasp Dual row 300mm cable	300	A	TERMINAL 28-32AWG 5011932000	2
			B	WIRE UL1061 28AWG BLACK	A/R
688014052	Sabre Female 150mm cable	150	A	TERMINAL 14-16AWG 433751001	2
			B	WIRE UL1061 16AWG BLACK	A/R
688014053	Sabre Female 300mm cable	300	A	TERMINAL 14-16AWG 433751001	2
			B	WIRE UL1061 16AWG BLACK	A/R
688014050	Sabre Male 150mm cable	150	A	TERMINAL 14-16AWG 431782002	2
			B	WIRE UL1061 16AWG BLACK	A/R
688014051	Sabre Male 300mm cable	300	A	TERMINAL 14-16AWG 431782002	2
			B	WIRE UL1061 16AWG BLACK	A/R
688014044	Sherlock Female 150mm cable	150	A	TERMINAL 24-30AWG 502128000	2
			B	WIRE UL1061 26AWG BLACK	A/R
688014045	Sherlock Female 300mm cable	300	A	TERMINAL 24-30AWG 502128000	2
			B	WIRE UL1061 26AWG BLACK	A/R



DETAIL A  
TERMINAL FIGURE

NOTES  
1. THIS PRODUCT MUST MEET EU 2011/65/EU ROHS COMPLIANCE.

EC NO: CPG2014-1417 DRWN: JX1A004 CHKD: YXZOU APPR: FNIE	2013/11/17 2013/11/17 2013/11/18	DESCRIPTION REV	QUALITY SYMBOLS	GENERAL TOLERANCES (UNLESS SPECIFIED)		DIMENSION STYLE MM ONLY		SCALE ---	DESIGN UNITS METRIC	THIRD ANGLE PROJECTION			
			$F_p=0$ $F_p=0$ $F_p=0$	mm    INCH	4 PLACES	± ---	± ---	DRAWN BY	DATE	SEE TABLE			
					3 PLACES	± ---	± ---	CHECKED BY	DATE				
					2 PLACES	± ---	± ---	YXZOU	2013/11/17				
					1 PLACE	± ---	± ---	APPROVED BY	DATE				
0 PLACE	± ---	± ---			FNIE	2013/11/18							
A	REV	ANGULAR ± ---°	DRAFT WHERE APPLICABLE MUST REMAIN WITHIN DIMENSIONS		MATERIAL NO. SEE TABLE		DOCUMENT NO. SD-68801-115	SHEET NO. 2 OF 2					
					THIS DRAWING CONTAINS INFORMATION THAT IS PROPRIETARY TO MOLEX INCORPORATED AND SHOULD NOT BE USED WITHOUT WRITTEN PERMISSION								

6 5 4 3 2 1