

**PLEASE CHECK WWW.MOLEX.COM FOR LATEST PART INFORMATION**

**Part Number:** [0473092651](#)  
**Status:** **Active**  
**Description:** 1.10mm (.043") Pitch microSD Card Header with Detect Switch, Height 2.65mm (.104"), Lead Free

**Documents:**

[3D Model](#) [Product Specification PS-47309-001 \(PDF\)](#)  
[Drawing \(PDF\)](#) [RoHS Certificate of Compliance \(PDF\)](#)

**General**

Product Family	Memory Card Sockets
Series	<a href="#">47309</a>
Button Type	Push-Pull
Comments	<LI>Push-Pull Type
Component Type	I/O Header (Card)
Product Name	microSD Card, TransFlash
Type	N/A

**Physical**

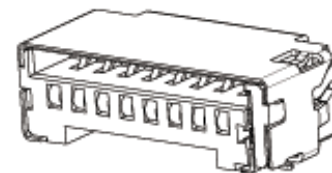
Card Detection Switch	Yes
Circuits (Loaded)	8
Circuits (maximum)	8
Color - Resin	Black
Durability (mating cycles max)	10,000
Ejector Button Side	No Ejector Button Present
Entry Angle	90° Angle
Keying to Mating Part	Yes
Material - Metal	Phosphor Bronze
Material - Plating Mating	Gold
Material - Plating Termination	Gold
Material - Resin	High Temperature Thermoplastic
PCB Locator	No
PCB Mounting Side	Reverse
PCB Retention	Yes
Packaging Type	Embossed Tape on Reel
Pitch - Mating Interface (in)	0.043 In
Pitch - Mating Interface (mm)	1.10 mm
Pitch - Term. Interface (in)	0.043 In
Pitch - Term. Interface (mm)	1.10 mm
Plating min: Mating (µin)	29.5
Plating min: Mating (µm)	0.75
Plating min: Termination (µin)	2
Plating min: Termination (µm)	0.05
Ports	1
Temperature Range - Operating	-40°C to +85°C
Termination Interface: Style	Surface Mount

**Electrical**

Current - Maximum per Contact	0.5A
Shielded	Yes
Voltage - Maximum	5V

**Solder Process Data**

Duration at Max. Process Temperature (seconds)	10
Lead-free Process Capability	Reflow Capable (SMT only)
Max. Cycles at Max. Process Temperature	2



*image - Reference only* Series

**EU RoHS**

**ELV and RoHS Compliant**  
**REACH SVHC**  
 Not Reviewed  
**Halogen-Free Status**

**China RoHS**



**Halogen-Free**

**Need more information on product environmental compliance?**

Email [productcompliance@molex.com](mailto:productcompliance@molex.com)  
 For a multiple part number RoHS Certificate of Compliance, [click here](#)

Please visit the [Contact Us](#) section for any non-product compliance questions.

**Search Parts in this Series**

[47309Series](#)

**Mates With**

Standard SIM Card

**Use With**

microSD Card

Process Temperature max. C 255

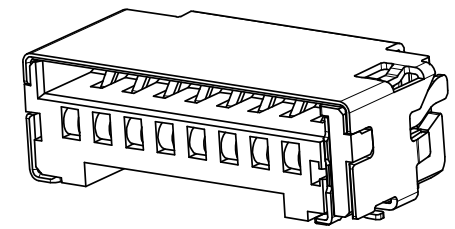
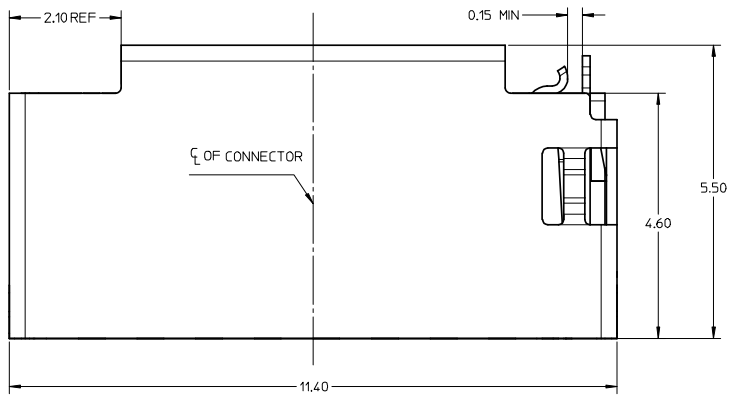
**Material Info**

**Reference - Drawing Numbers**

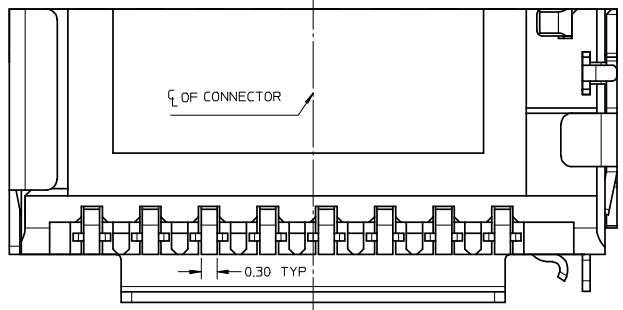
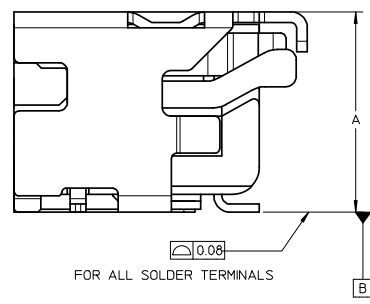
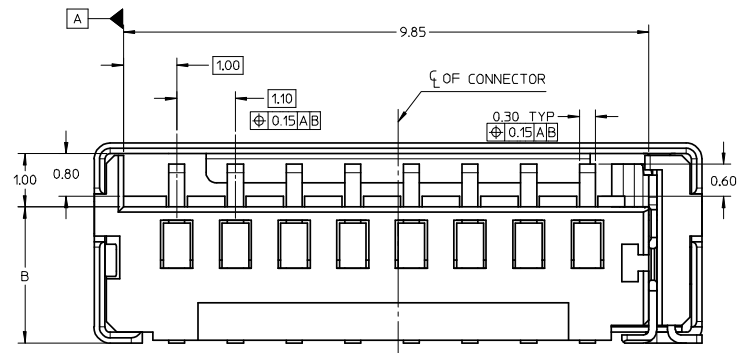
Product Specification PS-47309-001  
Sales Drawing SD-47309-001

This document was generated on 03/31/2010

**PLEASE CHECK [WWW.MOLEX.COM](http://WWW.MOLEX.COM) FOR LATEST PART INFORMATION**



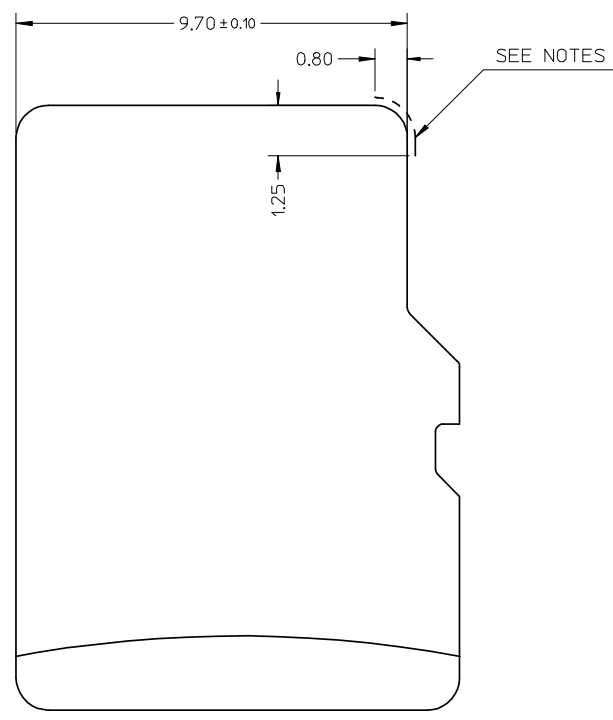
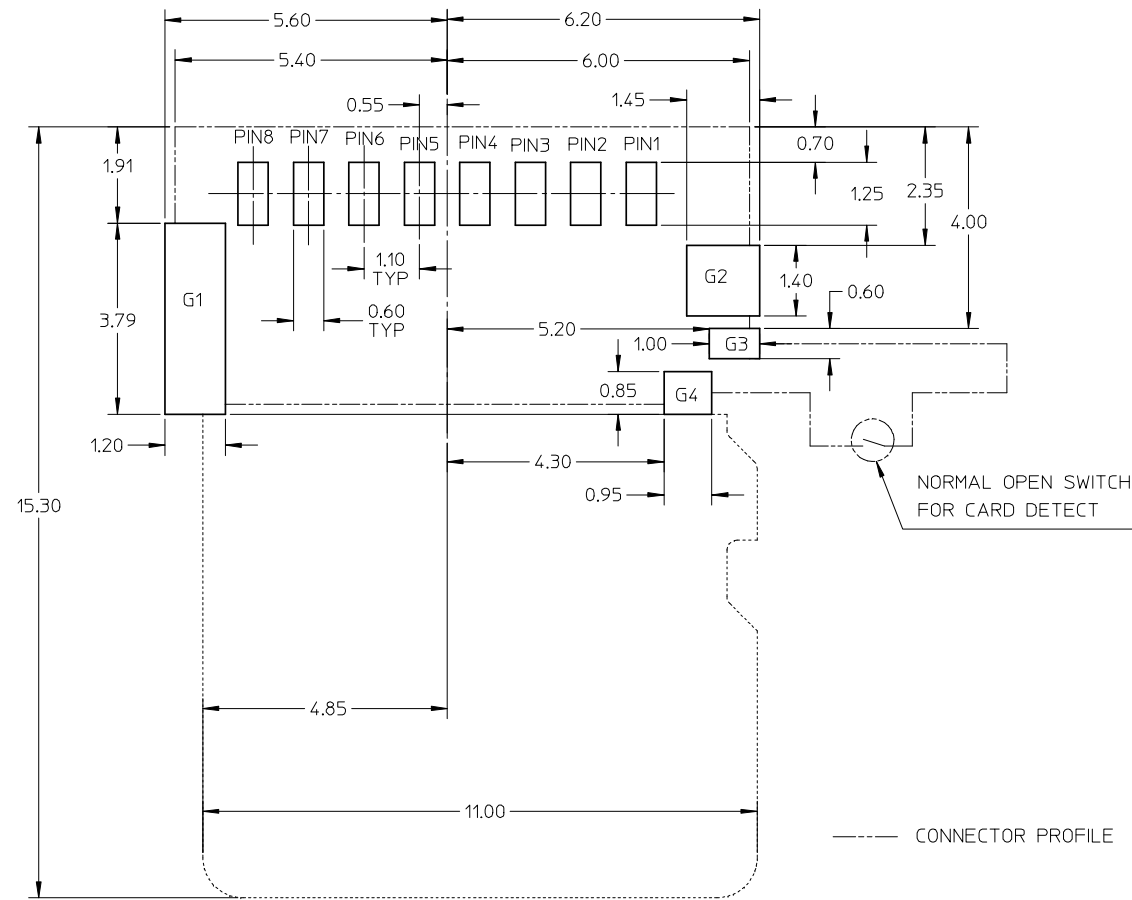
NOTE:  
 1 MATERIAL:  
 1-1 HOUSING : LCP, 30% G/F, UL 94V-0, BLACK  
 1-2 SIGNAL TERMINAL AND DETECT TERMINAL : PHOSPHOR BRONZE  
 1-3 METAL SHELL : STAINLESS STEEL  
 2 FINISH:  
 2-1 SIGNAL TERMINAL : 1.25-6.25 MICRON NICKEL MIN UNDER-PLATED,  
 0.75-1.25 MICRON GOLD MIN ON CONTACT AREA, GOLD FLASH PLATED ON SOLDER AREA  
 2-2 METAL SHELL : GOLD FLASH PLATED OVER NICKEL ON SOLDER AREA  
 2-3 DETECT PIN : 1.25-6.25 MICRON NICKEL MIN UNDER-PLATED  
 GOLD FLASH PLATED ON CONTACT AREA, TIN PLATED ON SOLDER AREA  
 3 PRODUCT SPECIFICATION: PS-47309-001.



473093751	3.75	2.55
473093551	3.55	2.35
473093351	3.35	2.15
473092851	2.85	1.65
473092651	2.65	1.45
PART NUMBER	DIMENSION A	DIMENSION B

REVISION EC NO: SFA20080393599 DRWN: LLIU10 2008/02/22 CHKD: YLZH02 2008/03/11 APPR: HWANG 2008/04/02	QUALITY SYMBOLS	GENERAL TOLERANCES (UNLESS SPECIFIED)	DIMENSION STYLE	SCALE	DESIGN UNITS	THIRD ANGLE PROJECTION																
	$\nabla=0$ $\nabla=0$	<table border="1"> <tr> <td></td> <td>mm</td> <td>INCH</td> </tr> <tr> <td>4 PLACES</td> <td>± 0.15</td> <td>± 0.005</td> </tr> <tr> <td>3 PLACES</td> <td>± 0.20</td> <td>± 0.008</td> </tr> <tr> <td>2 PLACES</td> <td>± 0.25</td> <td>± 0.010</td> </tr> <tr> <td>1 PLACE</td> <td>± 0.30</td> <td>± 0.012</td> </tr> </table>		mm	INCH		4 PLACES	± 0.15	± 0.005	3 PLACES	± 0.20	± 0.008	2 PLACES	± 0.25	± 0.010	1 PLACE	± 0.30	± 0.012	MM ONLY	15:1	METRIC	
		mm	INCH																			
	4 PLACES	± 0.15	± 0.005																			
3 PLACES	± 0.20	± 0.008																				
2 PLACES	± 0.25	± 0.010																				
1 PLACE	± 0.30	± 0.012																				
DESCRIPTION	<table border="1"> <tr> <td>DRAWN BY</td> <td>DATE</td> <td>TITLE</td> </tr> <tr> <td>XIXU</td> <td>2005/12/24</td> <td>TFR HEADER W/DETECT PIN</td> </tr> <tr> <td>CHECKED BY</td> <td>DATE</td> <td></td> </tr> <tr> <td>YJWU</td> <td>2005/12/24</td> <td></td> </tr> <tr> <td>APPROVED BY</td> <td>DATE</td> <td></td> </tr> <tr> <td>YJWU</td> <td>2005/12/24</td> <td></td> </tr> </table>	DRAWN BY	DATE	TITLE	XIXU	2005/12/24	TFR HEADER W/DETECT PIN	CHECKED BY	DATE		YJWU	2005/12/24		APPROVED BY	DATE		YJWU	2005/12/24		MATERIAL NO.	DOCUMENT NO.	SHEET NO.
DRAWN BY	DATE	TITLE																				
XIXU	2005/12/24	TFR HEADER W/DETECT PIN																				
CHECKED BY	DATE																					
YJWU	2005/12/24																					
APPROVED BY	DATE																					
YJWU	2005/12/24																					
REV	DRAFT WHERE APPLICABLE MUST REMAIN WITHIN DIMENSIONS	SEE TABLE SIZE A2 THIS DRAWING CONTAINS INFORMATION THAT IS PROPRIETARY TO MOLEX INCORPORATED AND SHOULD NOT BE USED WITHOUT WRITTEN PERMISSION	SD-47309-001	1 OF 2																		

10 9 8 7 6 5 4 3 2 1



----- CONNECTOR PROFILE  
 ..... CARD PROFILE

TRF CARD

G4	DET
G3	POL
G2	GND
G1	GND
P8	DAT1
P7	DAT0
P6	VSS
P5	CLK
P4	VDD
P3	CMD
P2	CD/DAT3
P1	DAT2
PIN NUMBER	PIN NUMBER

RECOMMENDED PCB LAYOUT  
 TOLERANCE FOR PCB LAYOUT : ±0.05

NOTES:

NO CONDUCTIVE EXPOSURE TRACE IS ALLOWED ON THE SIDE FACE OF THE CARD AT THIS AREA.

9 8 7 6 5 4 3 2 1

<b>REVISION</b> EC NO: SH20080309399 DRW: LLIU10 2008/02/22 CHKD: YLZHU02 2008/03/11 APPR: HWANG 2008/04/02	<b>QUALITY SYMBOLS</b>  	<b>GENERAL TOLERANCES (UNLESS SPECIFIED)</b>		<b>DIMENSION STYLE</b> MM ONLY	<b>SCALE</b> 15:1	<b>DESIGN UNITS</b> METRIC	THIRD ANGLE PROJECTION
		4 PLACES ± --- ± --- 3 PLACES ± --- ± --- 2 PLACES ± 0.15 ± --- 1 PLACE ± 0.25 ± ---	mm INCH DRAWN BY: XIXU DATE: 2005/12/24 CHECKED BY: YJWU DATE: 2005/12/24 APPROVED BY: YJWU DATE: 2005/12/24	TITLE TFR HEADER W/DETECT PIN			
		ANGULAR ± 1 °	MATERIAL NO. SEE TABLE			DOCUMENT NO. SD-47309-001	SHEET NO. 2 OF 2
		DRAFT WHERE APPLICABLE MUST REMAIN WITHIN DIMENSIONS	THIS DRAWING CONTAINS INFORMATION THAT IS PROPRIETARY TO MOLEX INCORPORATED AND SHOULD NOT BE USED WITHOUT WRITTEN PERMISSION				