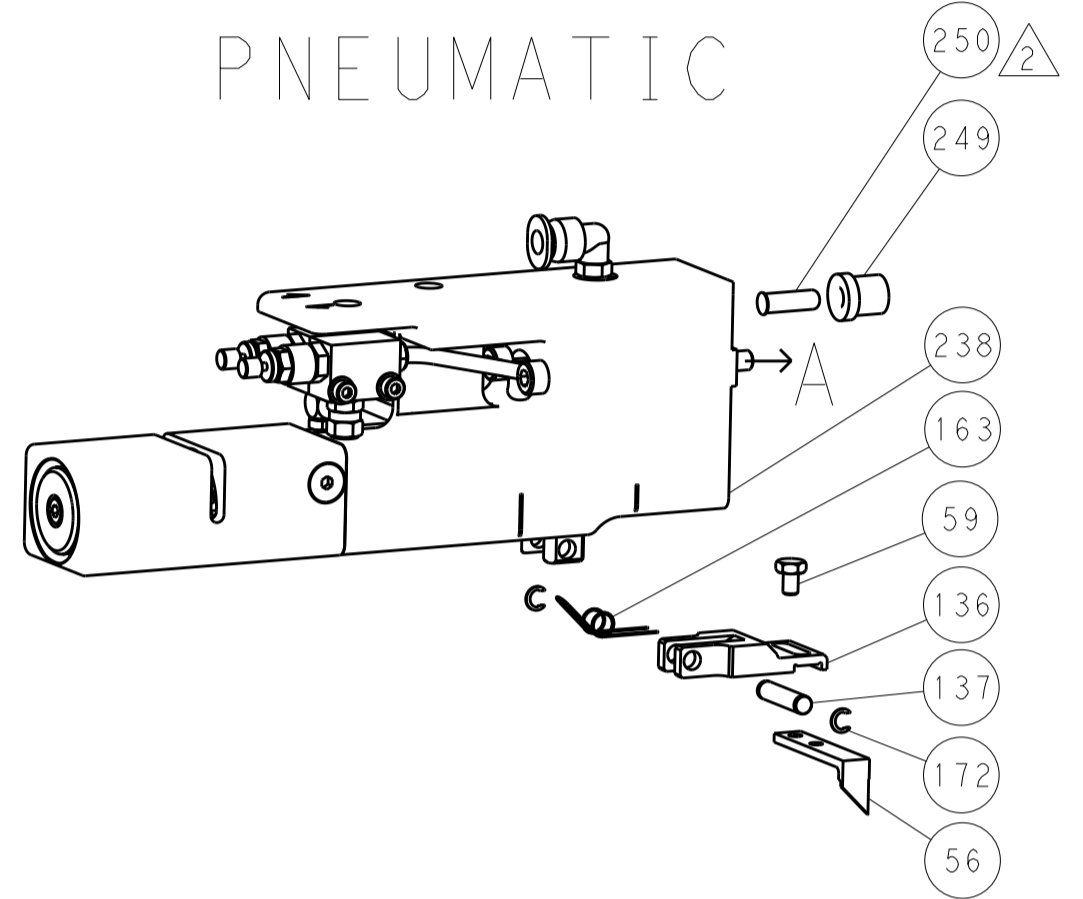


LOC		DIST		REVISIONS			
A	66	P	LTM	DESCRIPTION	DATE	OWN	APVD
		-	-	SEE SHEET 1	-	-	-

FEED TYPE MECHANICAL



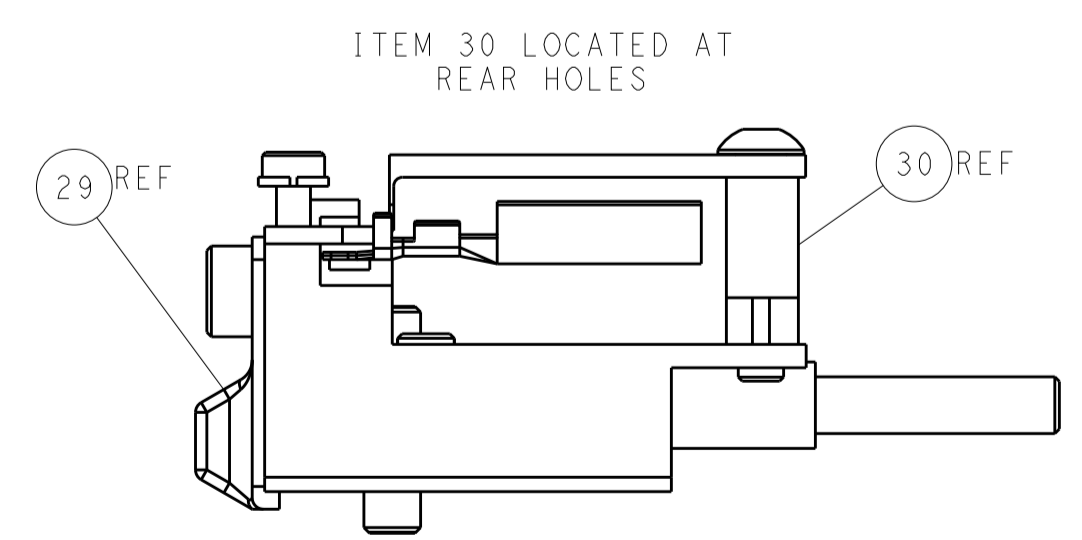
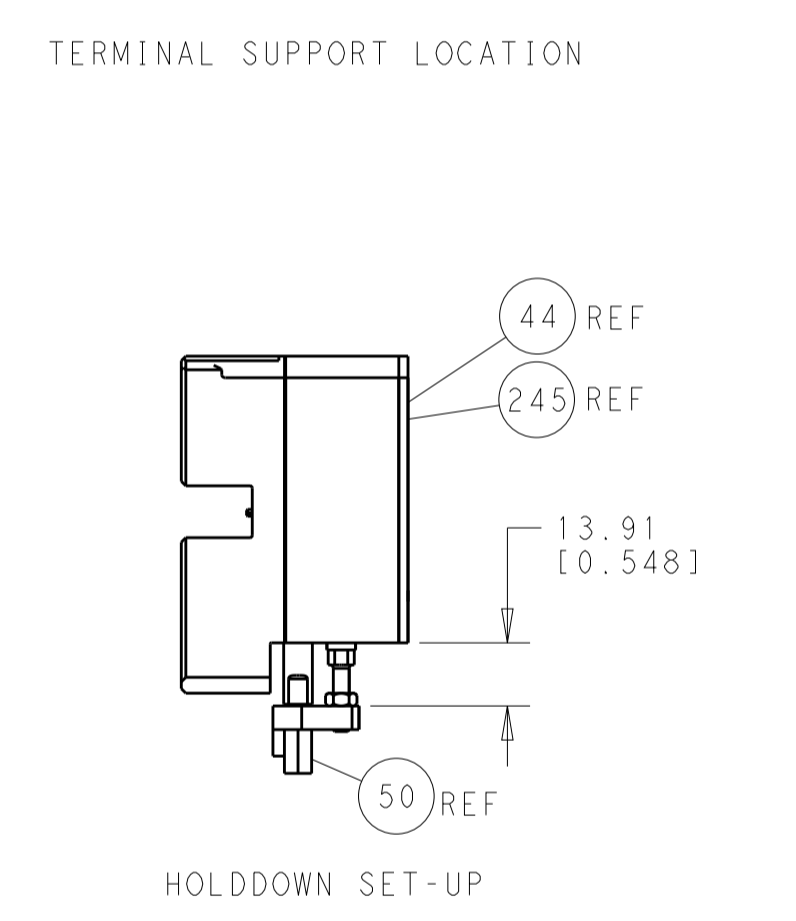
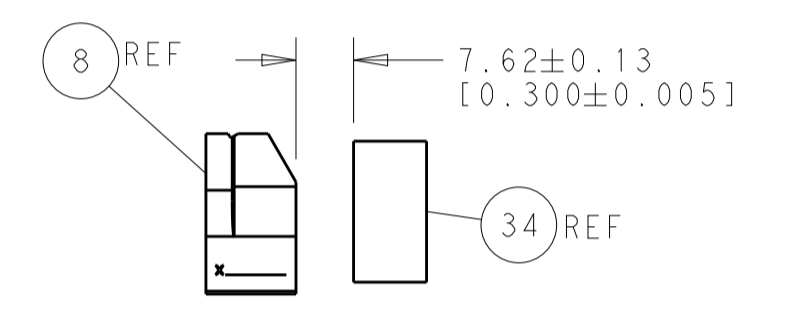
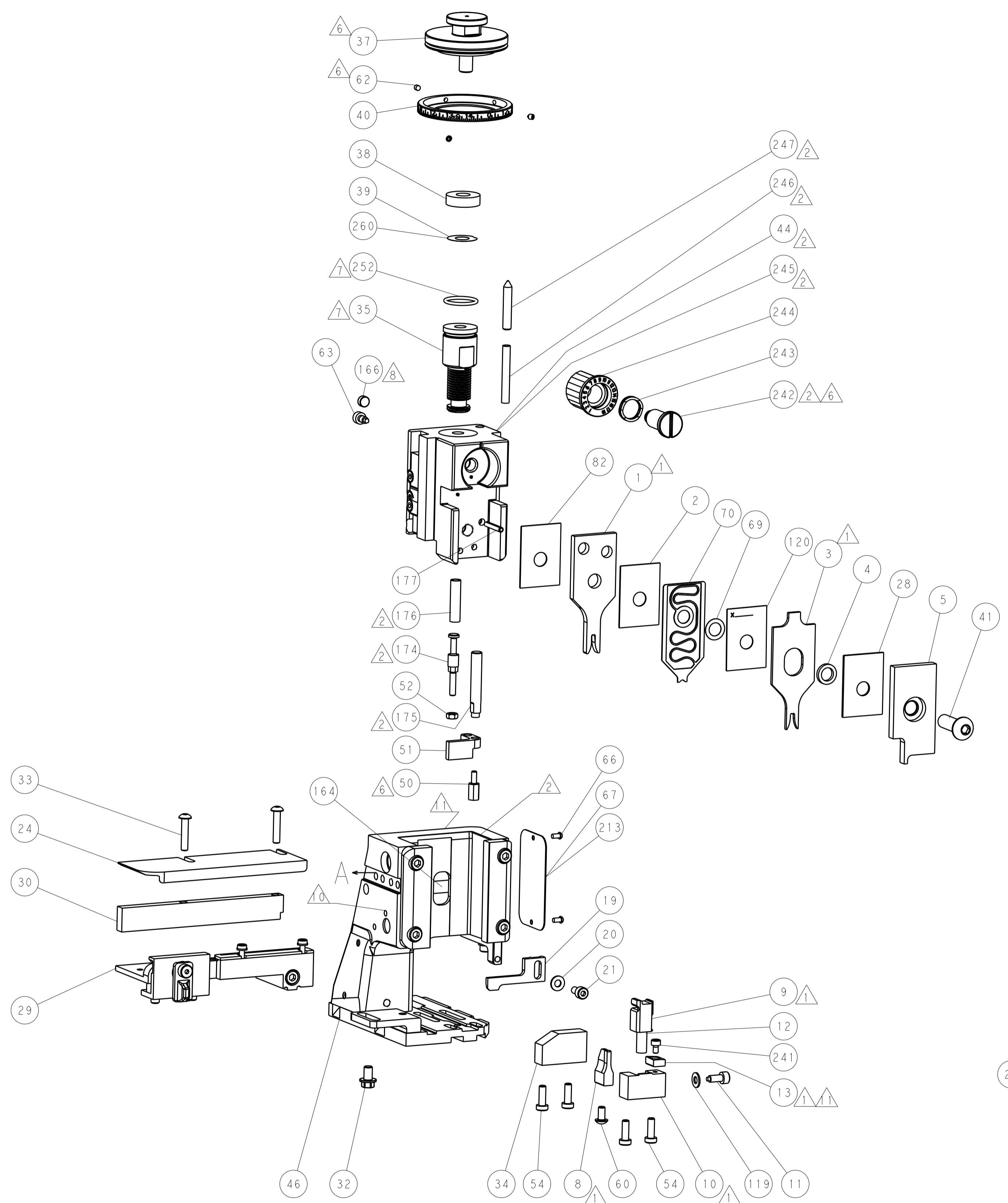
PNEUMATIC



SERVO LATCH PLATE



CAM POSITIONS



ATLANTIC VERSION
 Shown on sheets 1 of 4 & 2 of 4
 (Pacific version shown on sheets 3 of 4 & 4 of 4)

DIMENSIONS:		TOLERANCES UNLESS OTHERWISE SPECIFIED:		DWN C. MOYER 10OCT2011		TE Connectivity	
mm	0 PLC ±0.5	1 PLC ±0.5	2 PLC ±0.13	3 PLC ±0.013	4 PLC ±0.001	ANGLES ±0.001	FINISH
MATERIAL:				G. BAILEY 10OCT2011		NAME	
Customer Accessible Production Drawing				SCALE 1:2		SHEET 2 OF 4 REV B	

APPLICATOR STYLE CONVERSION CHART table with columns: CONVERT TO, PART NUMBERS REQUIRED. Rows include PNEUMATIC FEED, SERVO LATCH PLATE, SMART APPLICATOR, MECHANICAL FEED, and PNEUMATIC FEED with various part numbers like 2119950-1 and 2063440-1.

APPLICATOR DATA table with columns: CRIMP SIZE TYPE, WIRE SIZE, INSUL SIZE. Values include 2.03 mm [.080] F and 2.79 mm [.110] F.

TERMINAL DATA: TE TERMINAL TE CRIMP SPECIFICATION. TABLE WITH WIRE STRIP LENGTH, INSULATION DIAMETER RANGE, and TERMINAL APPLICATION SPECIFICATION.

TERMINALS APPLIED table with columns: TE TERMINAL. Lists terminal part numbers like 927784-2 and 927786-2.

WIRE SIZE, CRIMP HEIGHT mm [INCH], CRIMP HEIGHT REFERENCE SETTING. Table mapping wire sizes to crimp heights.

- RECOMMENDED SPARE PARTS
GREASE BEARING SURFACES LIGHTLY
3. LUBRICATE DAILY PER THE APPLICATOR INSTRUCTION SHEET SUPPLIED WITH THE APPLICATOR.
4. APPLICATOR SPECIFIC DATA TO BE ENTERED INTO BLANK MEMORY CHIP AT ASSEMBLY...

*WARNING
ON INSTALLATION, SET WIRE DISC, ITEM 40 TO LARGEST WIRE SIZE SETTING. USE OF SETTINGS BELOW MINIMUM REQUIRED CRIMP HEIGHT SETTING WILL CAUSE DAMAGE TO CRIMP TOOLING.

Table with 5 columns: PART NO, DESCRIPTION, ITEM NO. Lists items like FINE ADJUST HEAD ASM, PUSH ROD, AIR FEED.

PACIFIC VERSION
Shown on sheets 3 of 4 & 4 of 4
(Atlantic version shown on sheets 1 of 4 & 2 of 4)

SET UP GAUGE, LOC, DIST, REVISIONS table. Includes revision history with columns for REV, LTN, DESCRIPTION, DATE, DWN, APVD.

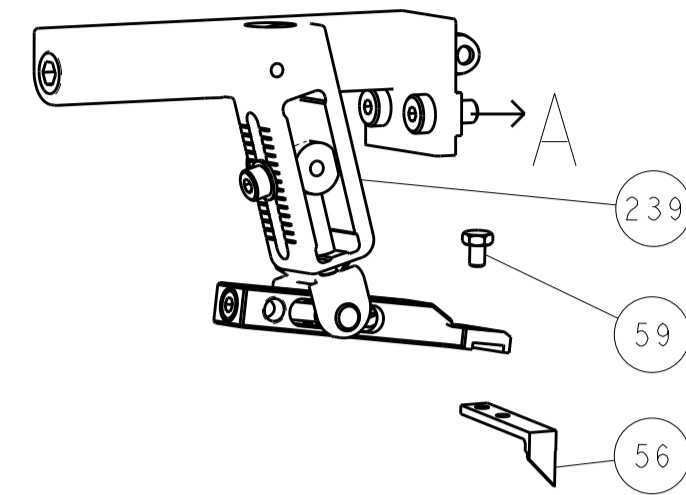
Main parts list table with columns: PART NO, DESCRIPTION, ITEM NO. Lists various components like CAM, SNAIL, INSULATION ADJUSTMENT, WASHER, WAVE SPRING, etc.

Customer Accessible Production Drawing. Includes fields for DIMENSIONS, TOLERANCES, MATERIAL, FINISH, WEIGHT, SCALE, SHEET, and DRAWING NO.

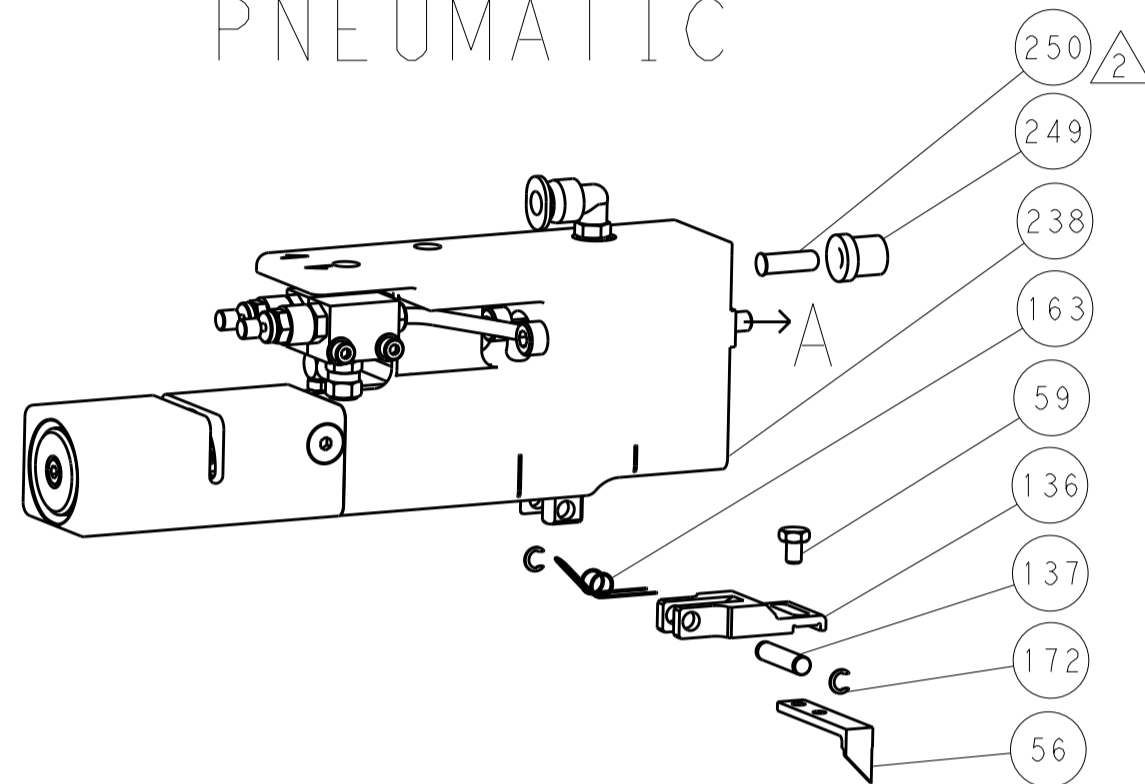
REVISONS		DATE	DWN	APVD
A	66			
		SEE SHEET 1		

DIMENSIONING AND TOLERANCING PER ASME Y14.5M-2003

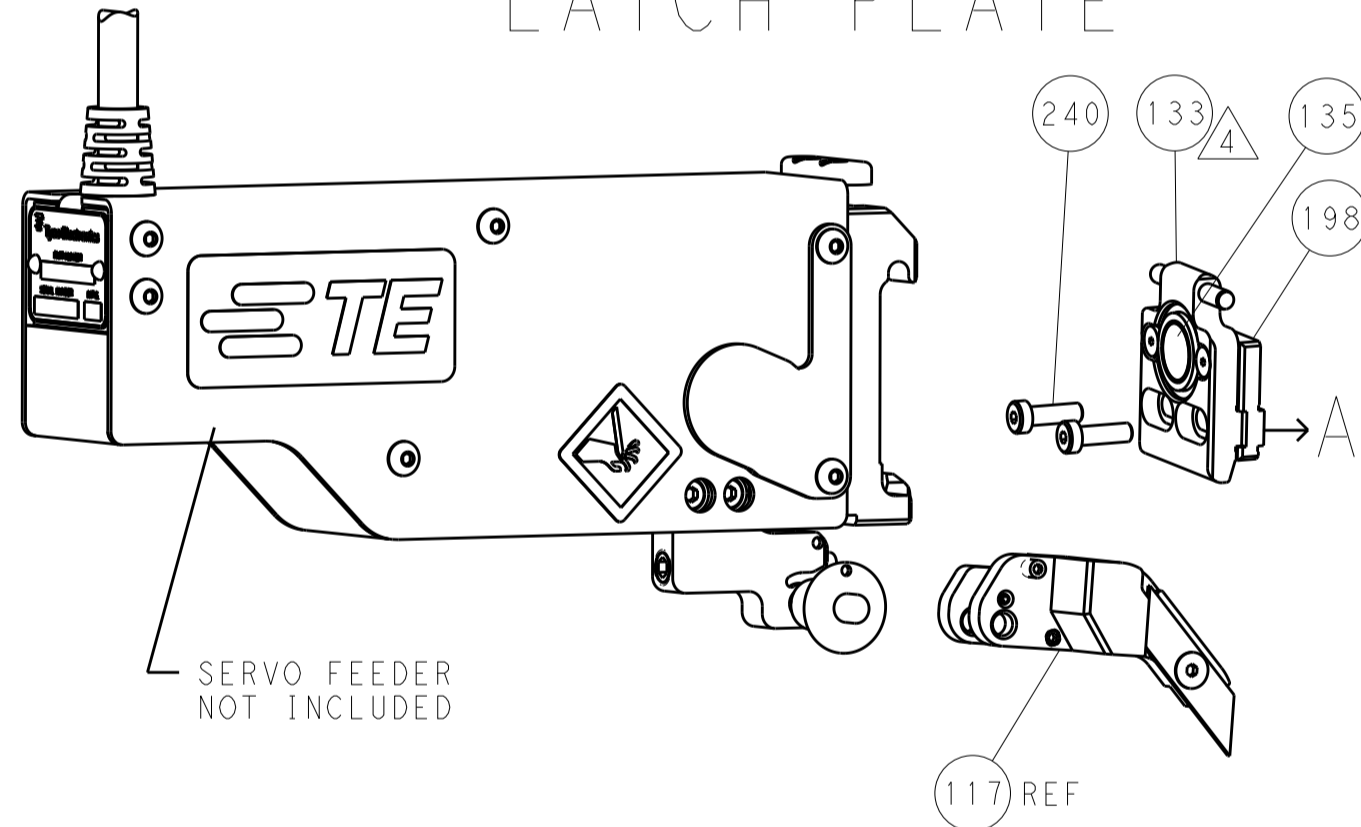
FEED TYPE MECHANICAL



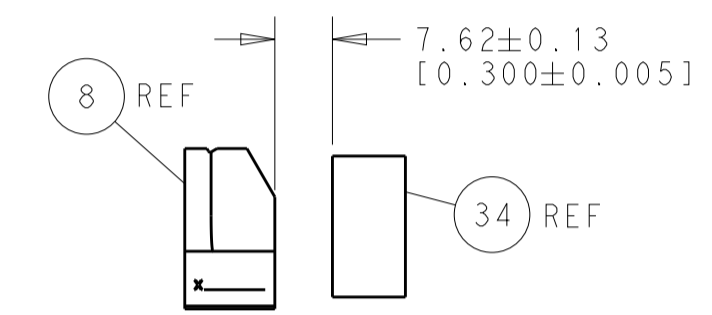
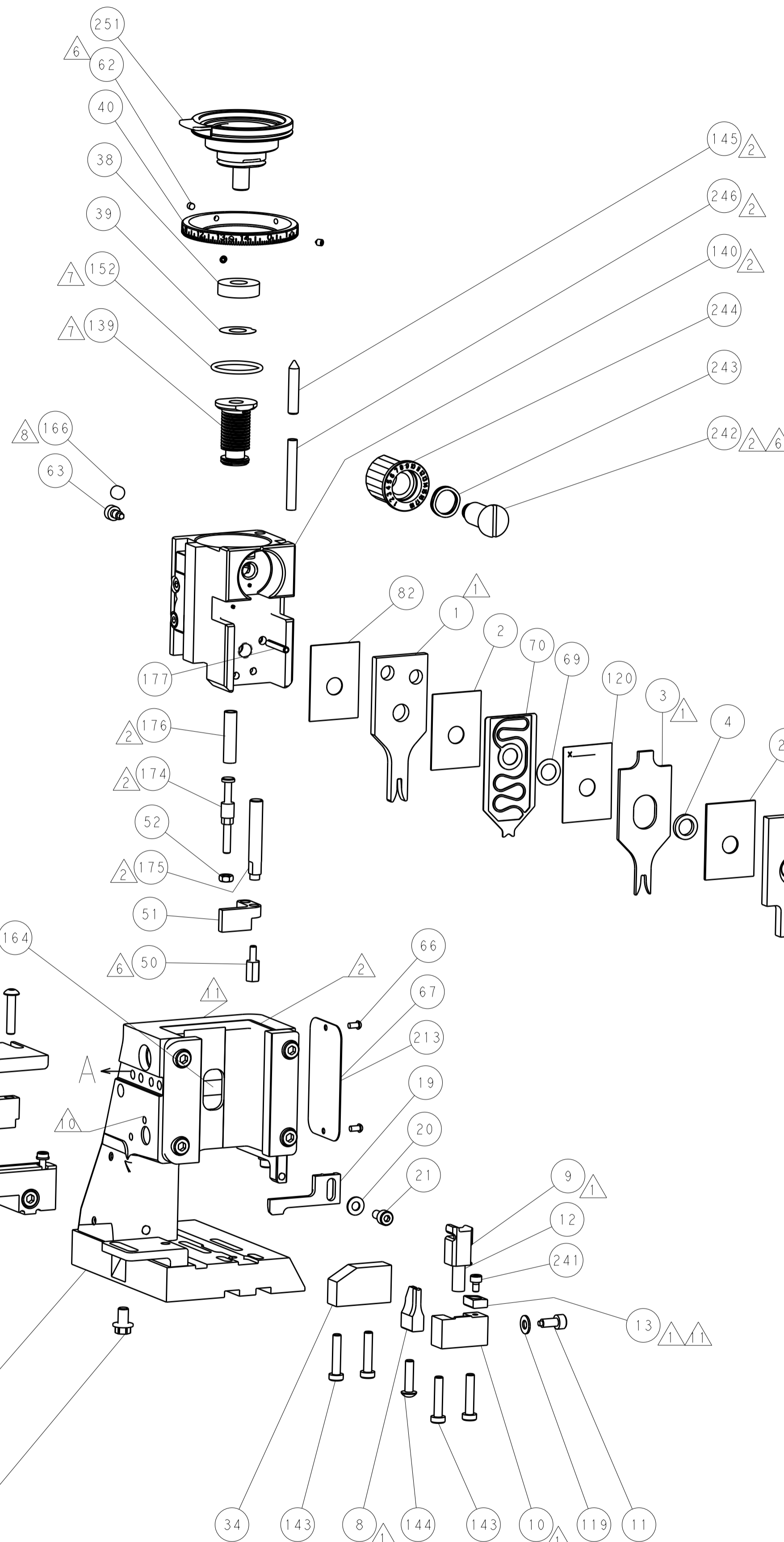
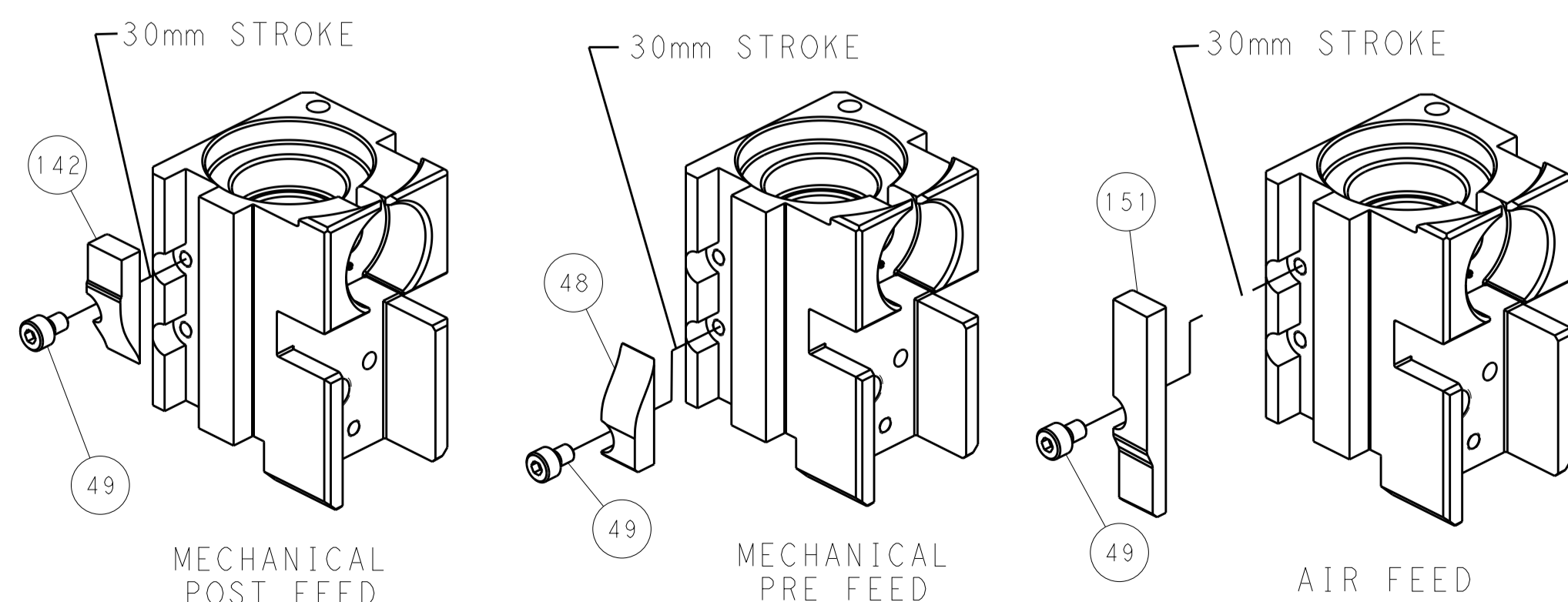
PNEUMATIC



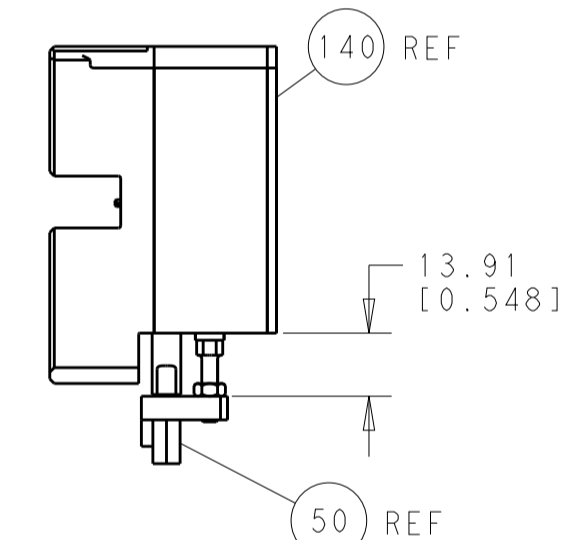
SERVO LATCH PLATE



CAM POSITIONS

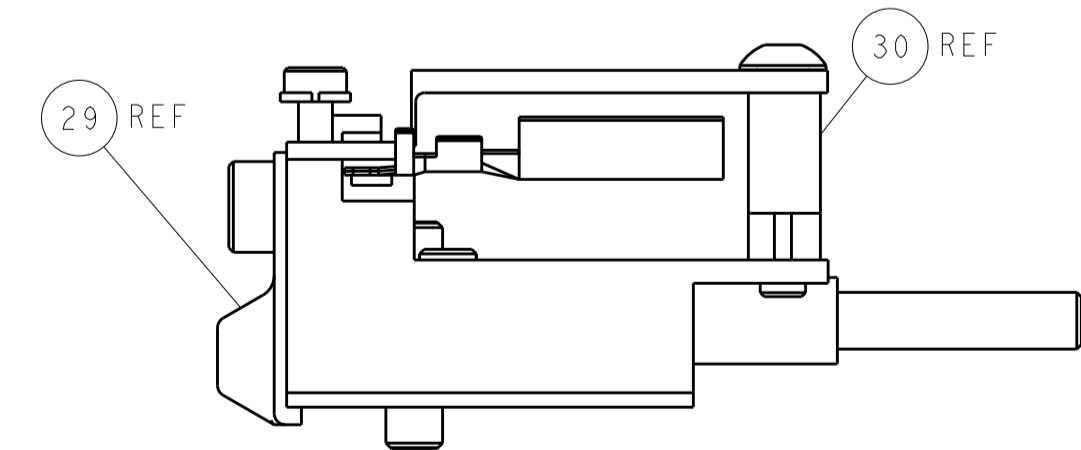


TERMINAL SUPPORT LOCATION



HOLDDOWN SET-UP

ITEM 30 LOCATED AT REAR HOLES



FEED TRACK POSITION GUIDE BY INSULATION BARREL

PACIFIC VERSION
 Shown on sheets 3 of 4 & 4 of 4
 (Atlantic version shown on sheets 1 of 4 & 2 of 4)

DIMENSIONS:		TOLERANCES UNLESS OTHERWISE SPECIFIED:		DWN: C. MOYER 10OCT2011		TE Connectivity	
mm	0 PLC ±0.5	1 PLC ±0.5	2 PLC ±0.13	3 PLC ±0.013	4 PLC ±0.0013	APVD: G. BAILEY 10OCT2011	Harrisburg, PA 17105-3608
MATERIAL:		FINISH:		NAME: Ocean Side Feed Applicator		RESTRICTED TO:	
				SIZE: A1		CAGE CODE: 00779	
				DRAWING NO: 2151276		SCALE: 1:2	
				SHEET: 4		OF: 4	
				REV: B			