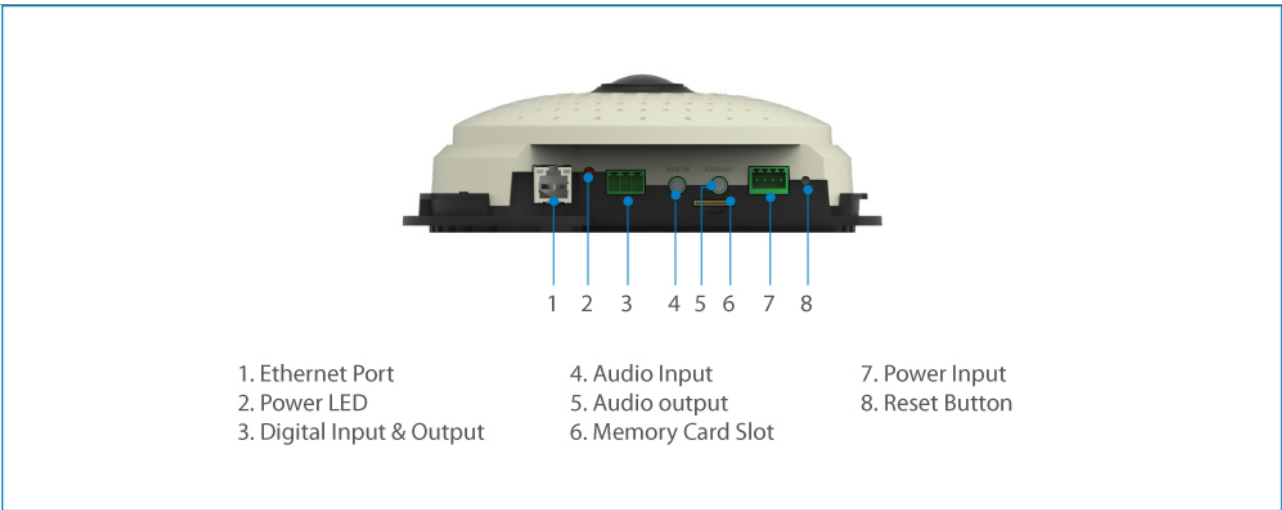




FCS-3094 2022 22: 1

Panoramic Dome Network Camera, 10-Megapixel, PoE 802.3af, Day & Night, WDR



Key Features

- 20 Micro SDHC/SDXC 22
- 10-2222 2222
- 2222 22 22 222 22 222 360°/180° 222 22 22
- 22 2222 222 222222 2 22222 22 WDR(22 22 22) 22
- 22 2 22 22 2222 2222 IR-2 22
- 22 22 22: 12VDC/PoE (IEEE 802.3af)
- 22: H.264/MJPEG
- 22 64-22 22222 2222 22(OneSecure App 22)



System Specifications

Standards & Protocols:

IEEE 802.3 10-BASE-T, Ethernet

IEEE 802.3u 100-BASE-TX, Fast Ethernet

IEEE 802.3af Power over Ethernet (PoE)

IEEE 802.1X Network Access Control

TCP, UDP, HTTP, HTTPS, DHCP, PPPoE, RTP, RTSP, IPv6, DNS, DDNS, NTP, ICMP, ARP, IGMP, SMTP, FTP,

UPnP, SNMP, Bonjour

**Image Sensor:**

10-Megapixel 1/2.3" Progressive Scan CMOS

Connectors and Cabling:

1 x RJ-45 10/100 Mbps PoE port
1 x Line In
1 x Line Out
1 x Power terminal block
I/O terminal block (1 DI/1 DO)

Modularity:

1 x MicroSDHC/ MicroSDXC card slot

Button:

Reset Button

Indicator:

Power, Link

Lens:

Fixed focal, Fixed iris, Fixed focus, f1.37mm, F2.0

IR Cut Filter:

Removable infrared-cut filter for day & night function

Shutter Time:

1/5 ~ 1/10,000 sec

Angle of View:

180° (overview area), 109.8° (high detail area)

Pan/Tilt/Zoom:

Digital Zoom to very high detail available on Software

Video Compression:

H.264 / MJPEG

Resolution:

3648 x 2736(10M), 2592 x 1944, 2048 x 1536, 640 x 480, 320 x 240

Video Format:

RAW

Audio Compression:

G.711

Power:

Power Consumption: PoE Class 2 (IEEE 802.3af) / 4 W, DC 12V / 3.4 W

Power Input: DC 12V / 802.3af PoE

Features

General:

Backup: MicroSDHC /MicroSDXC card slot for local storage

Video:

Image Setting: - Adjustable image size, quality and bit rate
- Configurable brightness, sharpness, contrast, saturation, white balance and exposure
- AGC/AWB/AES
- Back Light Compensation (BLC)
- Wide Dynamic Range (WDR), Basic WDR (70 dB)
- 2D Noise Reduction (2DNR)

Streaming: Up to 2 video streams

Audio:

Streaming: 2-way audio

Input/Output: line input, line output

Performance

Data Transfer Rate:

10/100Mbps

Storage Capacity:

SD/MicroSD memory card of up to 64GB

Frame Rate:

7 fps for all resolutions

Minimum illumination:

Color: 0.1 lux at F2.0

B/W: 0.05 lux at F2.0

Environment

Temperature (°C):

Operating: -10°C ~ 50°C

Humidity (Non-condensing):

Operating: 10% ~ 85%

Physical Specifications

Dimensions (W x D x H mm):

150 x 47 x 150

Weight (g):

342 g

Others

Approval and Compliance:

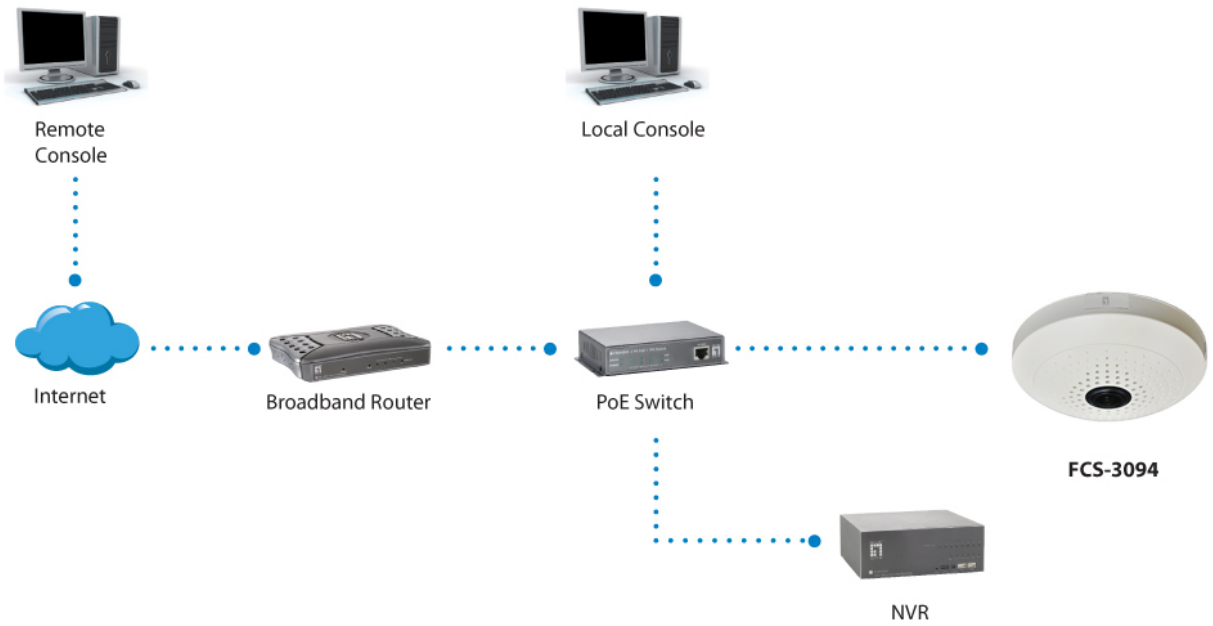
CE, FCC, ONVIF

Deployment:

Wall/Ceiling Mount

Operation Systems:

Microsoft Windows 8/7/Vista/XP



Order Information

FCS-3094

Package Contents

- FCS-3094
 - Mounting Kit
 - Screw Kit
 - Quick Installation Guide
 - Resource CD (User Manual, Utility, QIG)
-



CAS-2101
Mount Kit for all Dome Cameras



CAS-2102
Straight tube without bracket for pendant mounting



CAS-2103
Straight tube with bracket for pendant mounting



CAS-2104

Extension tube for pendant mounting



CAS-2313

Wall Mount for Indoor Domes



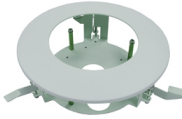
CAS-2402

Corner mount



CAS-2503

Pole Mount for PTZ, hemispheric and dome cameras



CAS-3003

Flush Mount Kit