

4

3

2

1

THIS DRAWING IS UNPUBLISHED.

RELEASED FOR PUBLICATION

-,-

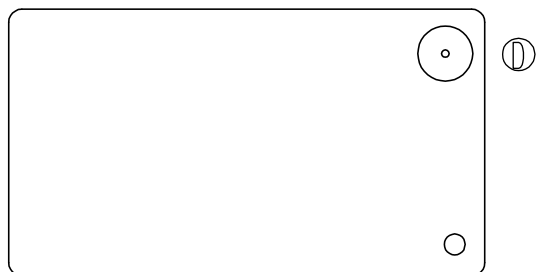
© COPYRIGHT - By - TE CONNECTIVITY

ALL RIGHTS RESERVED.

LOC
HBDIST
-

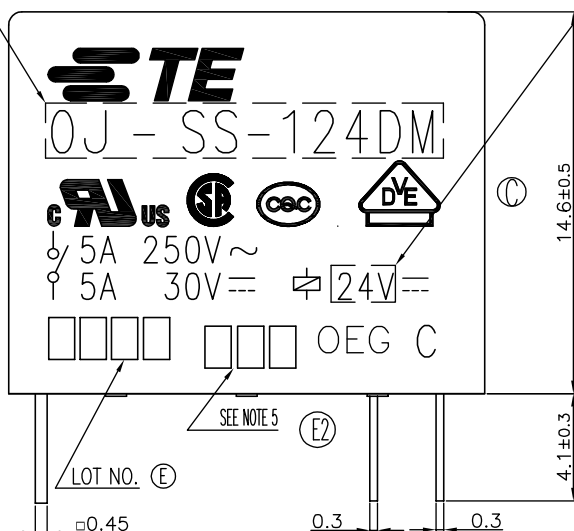
REVISIONS

P	LTR	DESCRIPTION	DATE	DWN	APVD
	E2	CHANGE LOGO&ADD LINE IDENTIFICATION ECO-12-001771	20Aug2012	YS.H	BH.Y



PART A

PART B

(E2)
(E)

14.6±0.5

4.1±0.3

LOT NO. (E)

0.45

0.3

SEE NOTE 5 (E2)

0.3

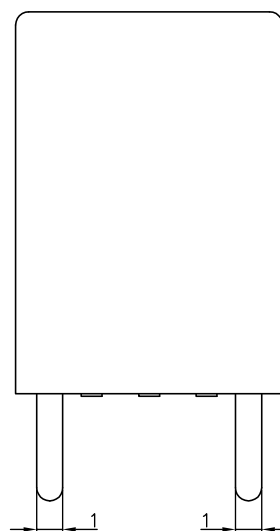
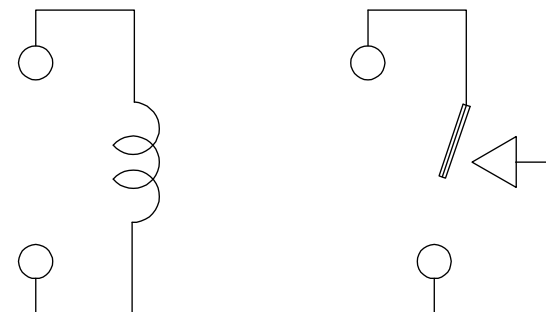
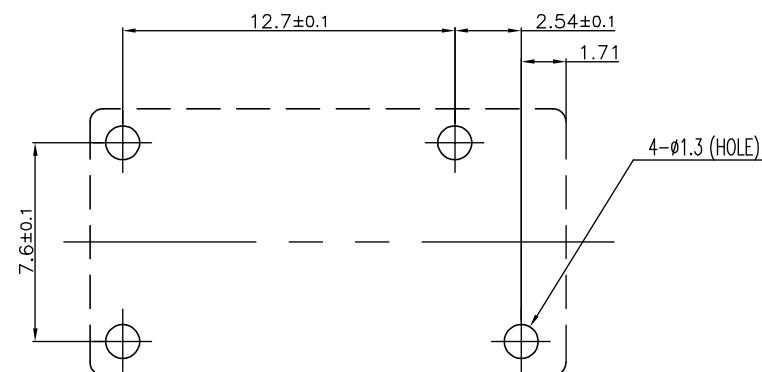
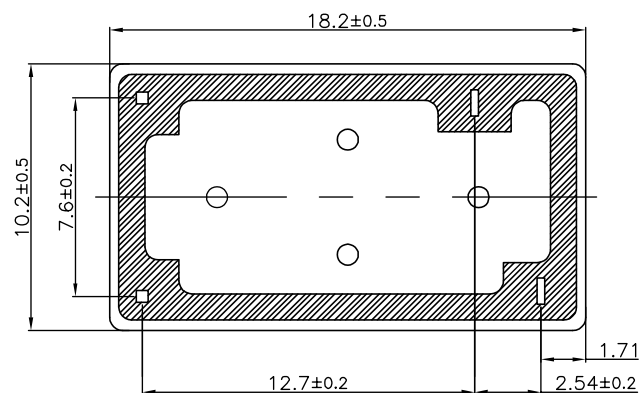


Diagram dimension	Tolerance
0.99mm max.	±0.1mm
1 - 2.99mm	±0.2mm
3mm min.	±0.3mm



CONNECTION FIGURE

FIGURE FOR PRINTED CIRCUIT BOARD PROCESSING
(BOTTOM VIEW)

THIS DRAWING IS A CONTROLLED DOCUMENT.

DIMENSIONS: mm	TOLERANCES UNLESS OTHERWISE SPECIFIED:
	0 PLC ± - 1 PLC ± - 2 PLC ± - 3 PLC ± - 4 PLC ± - ANGLES ± -
MATERIAL	FINISH
-	-

DWN	H.Sasaki
CHK	Y.Oikakwa
APVD	A.Nagai
PRODUCT SPEC	-
APPLICATION SPEC	-
WEIGHT	-
CUSTOMER DRAWING	

TE

TE Connectivity

NAME					—				
OJ-SS-DM CUSTOMER DRAWING									
—									
SIZE		CAGE CODE		DRAWING NO				RESTRICTED TO	
A3		00779		C= 1461076				—	
				SCALE 5:1		SHEET 1 OF 2		REV E2	

THIS DRAWING IS UNPUBLISHED.

RELEASED FOR PUBLICATION

-.-

© COPYRIGHT - By - TE CONNECTIVITY

ALL RIGHTS RESERVED.

LOC

DIST

REVISIONS

HB

-

P

LTR

DESCRIPTION

DATE

DWN

APVD

SEE SHEET 1

-

-

-

②	①	1461076-3	OJ-SS-118DM	107-79010	18VDC	OJ-SS-118DM	h
②		4-1419144-6	OJ-SS-148DM	107-79010	48VDC	OJ-SS-148DM	g
		2-1419129-9	OJ-SS-124DM	107-79010	24VDC	OJ-SS-124DM	f
		1-1419129-8	OJ-SS-112DM	107-79010	12VDC	OJ-SS-112DM	e
		1-1419129-5	OJ-SS-109DM	107-79010	9VDC	OJ-SS-109DM	d
②		1461076-2	OJ-SS-106DM	107-79010	6VDC	OJ-SS-106DM	c
		3-1419144-7	OJ-SS-105DM	107-79010	5VDC	OJ-SS-105DM	b
②		1461076-1	OJ-SS-103DM	107-79010	3VDC	OJ-SS-103DM	a
		PART NO	TYPE NAME	PACKAGE SPEC	PART B	PART A	TYPE

RELAY TYPE

①① NOTE:

1.LOT NO. SYSTEM AS FOLLOWS:

WEEK
YEAR

② 2.TERMINAL DIMENSION IS BEFORE SOLDER DIP;

② 3.FOR THE TIN-PLATING OF THE PINS:
+0.1mm FOR WIDTH,THICKNESS AND DIAMETER.
+0.5mm FOR LENGTH.

② 4.MARKING FROM INK TO LASER.

② 6.ADD LOT NO. SYSTEM AS FOLLOWING;

①	①	②
I	II	III

I, DIGITS FOR DAY OF THE WEEK

1...MONDAY IN THIS WEEK;
2...TUESDAY IN THIS WEEK;

.....

7...SUNDAY IN THIS WEEK

II, DIGITS FOR SHIFT OF THE DAY

1...DAY SHIFT IN THIS DAY;
2...NIGHT SHIFT IN THIS DAY;III, ONE CHARACTER DISTINGUISH THE
LINE IDENTITY, SUCH AS: A,B.....Z

		EPOXY RESIN	SEAL (BASE & BOBBIN)	15
		3UEW	MAGNETIC WIRE	14
94V-0		P.B.T	CASE	13
94V-0		P.B.T	BASE	12
94V-0		P.B.T	BOBBIN	11
	SOLDER DIP	C.P WIRE	COIL TERMINAL	10
94V-0		P.P.S	CARD	9
		Ag ALLOY	MOVABLE CONTACT	8
		Ag	NO.CONTACT	7
		STEEL	HINGE SPRING	6
	SOLDER DIP	PBP	NO.TERMINAL	5
	SOLDER DIP	PBS	MOVABLE SPRING	4
	NIP	STEEL	CORE	3
	NIP	STEEL	ARMATURE	2
	NIP	STEEL	YOKE	1
INCOMBUSTIBILITY	TREATMENT	MATERIAL	DESCRIPTION	ITEM

THIS DRAWING IS A CONTROLLED DOCUMENT.

DWN

H.Sasaki

CHK

Y.Oikakwa

APVD

A.Nagai

PRODUCT SPEC

-

APPLICATION SPEC

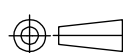
-

WEIGHT

-

DIMENSIONS:

mm

TOLERANCES UNLESS
OTHERWISE SPECIFIED:

0 PLC	± -
1 PLC	± -
2 PLC	± -
3 PLC	± -
4 PLC	± -
ANGLES	± -

MATERIAL

-

FINISH

-



TE Connectivity

NAME

OJ-SS-DM CUSTOMER DRAWING

SIZE

CAGE CODE

DRAWING NO

1461076

RESTRICTED TO

-

CUSTOMER DRAWING

SCALE 5:1

SHEET 2 OF 2

REV E2