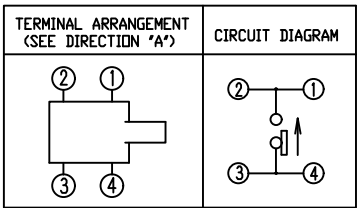


GT-MPU619-H313-L05

G-Switch
 G-Switch P/N
 H313=3.13mm
 L05=50,000 Cycles
 L1=100,000 Cycles

G-Switch Specification:
 Electrical Specifications: 10mA 5V DC
 Contact Resistance : 50mΩMAX
 Insulation Resistance: 100MΩ min. 100V DC
 Withstand Voltage: 100V AC/1 min
 Operating Temperature: -10°C~+60°C
 Storage Temperature: -40°C~+70°C
 Operating Life: 100,000 cycles



G-Switch Electronic (HongKong) CO.,Ltd.

Unless otherwise specified, Tolerance:
 X. ±0.30
 X.x ±0.20
 X.xx ±0.15
 X.xxx ±0.10
 Angles ±3°

DESIGN Yvette Chen	DATE 2019.05.29	Molde code:	
CHECKED	DATE	GT-MPU619-H313-L05	
APPROVED	DATE	REV.: X1	SCALE: 4:1
http://www.dg-switch.com		UNIT: mm	
TEL:0769-82388879	SIZE: A4	SHEET: 1/1	