

Han 10E insert male crimp

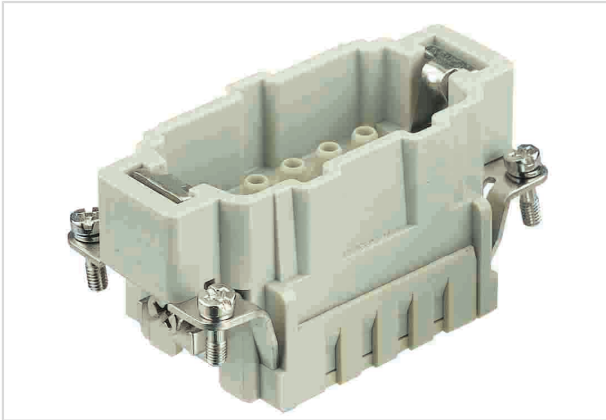


Image is for illustration purposes only. Please refer to product description.

| | |
|--------------------|---|
| Part number | 09 33 010 2602 |
| Specification | Han 10E insert male crimp |
| HARTING eCatalogue | https://b2b.harting.com/09330102602 |

Identification

| | |
|----------|--------------------|
| Category | Inserts |
| Series | Han E [®] |

Version

| | |
|--------------------|---|
| Termination method | Crimp termination |
| Gender | Male |
| Size | 10 B |
| Number of contacts | 10 |
| PE contact | Yes |
| Details | Please order crimp contacts separately. |

Technical characteristics

| | |
|---------------------------|----------------------------|
| Conductor cross-section | 0.14 ... 4 mm ² |
| Conductor cross-section | AWG 26 ... AWG 12 |
| Rated current | 16 A |
| Rated voltage | 500 V |
| Rated impulse voltage | 6 kV |
| Pollution degree | 3 |
| Rated voltage acc. to UL | 600 V |
| Rated voltage acc. to CSA | 600 V |
| Insulation resistance | >10 ¹⁰ Ω |
| Limiting temperature | -40 ... +125 °C |



Pushing Performance

Technical characteristics

| | |
|---------------|------|
| Mating cycles | ≥500 |
|---------------|------|

Material properties

| | |
|---|--|
| Material (insert) | Polycarbonate (PC) |
| Colour (insert) | RAL 7032 (pebble grey) |
| Material flammability class acc. to UL 94 | V-0 |
| RoHS | compliant with exemption |
| RoHS exemptions | 6(c): Copper alloy containing up to 4 % lead by weight |
| ELV status | compliant with exemption |
| China RoHS | 50 |
| REACH Annex XVII substances | No |
| REACH ANNEX XIV substances | No |
| REACH SVHC substances | Yes |
| REACH SVHC substances | Lead |
| ECHA SCIP number | 5dbb3851-b94e-4e88-97a1-571845975242 |

Specifications and approvals

| | |
|----------------|---|
| Specifications | EN 60664-1 IEC 61984 |
| Approvals | DNV GL |
| UL / CSA | UL 1977 ECBT2.E235076 UL 2237 PVVA2.E318390 CSA-C22.2 No. 182.3 PVVA8.E318390 |

Commercial data

| | |
|--------------------------------|---|
| Packaging size | 1 |
| Net weight | 47 g |
| Country of origin | Germany |
| European customs tariff number | 85366990 |
| eCl@ss | 27440205 Contact insert for industrial connectors |