

| DASH NO. RANGE | "D" DIA. RANGE  | "E" DIMENSION | "R" RADIUS | "T" GAUGE |
|----------------|-----------------|---------------|------------|-----------|
| -2 THRU -4     | 1/8" TO 1/4"    | "D"/2 + .422  | .06        | .032      |
| -5 THRU -8     | 5/16" TO 1/2"   |               |            | .040      |
| -9 THRU -11    | 9/16" TO 11/16" | "D"/2 + .406  | .11        | .050      |
| -12 THRU -16   | 3/4" TO 1"      |               |            | .062      |
| -17 THRU -96   | 1-1/16" TO 6"   | "D"/2 + .409  | .12        | .062      |

**MATERIAL & FINISH CODES:**

**METAL:** "NO CODE" 1008/1020 LOW CARBON STEEL PER ASTM A 1008, ASTM A 109, QQ-S-698  
 FINISH: ZINC PLATE GOLD PER ASTM B 633, Fe/Zn 8, TY. II 1  
 "S" 4130 ALLOY (CMS) STEEL PER MIL-S-18729 & AMS 6350  
 FINISH: CADMIUM PLATE BRIGHT PER AMS-QQ-P-416, TY. I, CL. 2  
 "SS" 304/321 STAINLESS STEEL PER AMS 5513/AMS 5510  
 FINISH: NONE  
 "D" 2024-T42 ALUMINUM CLAD PER AMS-QQ-A-250/5  
 "DK" 5052-H32 1/4 HARD ALUMINUM CLAD PER AMS-QQ-A-250/8  
 FINISH: NONE

**CUSHION:** "NO CODE" GENERAL PURPOSE NEOPRENE PER AMS 3209 2  
 COLOR: BLACK  
 "G" GENERAL PURPOSE EPDM PER SAE J200 M3 BA 710 C12  
 COLOR: BLACK, (WEDGE NOT AVAILABLE)  
 "H" GENERAL PURPOSE SILICONE PER AMS 3303 WITH 100 PSI MIN. TEAR  
 COLOR: RED/ORANGE, (WEDGE NOT AVAILABLE)  
 "HL" GENERAL PURPOSE SILICONE PER AMS 3303 & MIL-C-8603 WITH 100 PSI MIN. TEAR  
 COLOR: NATURAL WHITE  
 "HS" GLASS FABRIC REINFORCED SILICONE PER AMS 3303  
 COLOR: RED/ORANGE

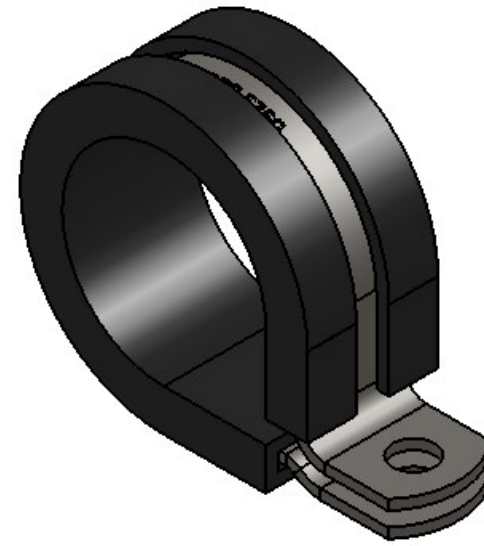
**EXAMPLE OF PART CALLOUT:**

1" DIA. CLAMP, 2024-T42 ALUM., W/WEDGED WHITE SILICONE

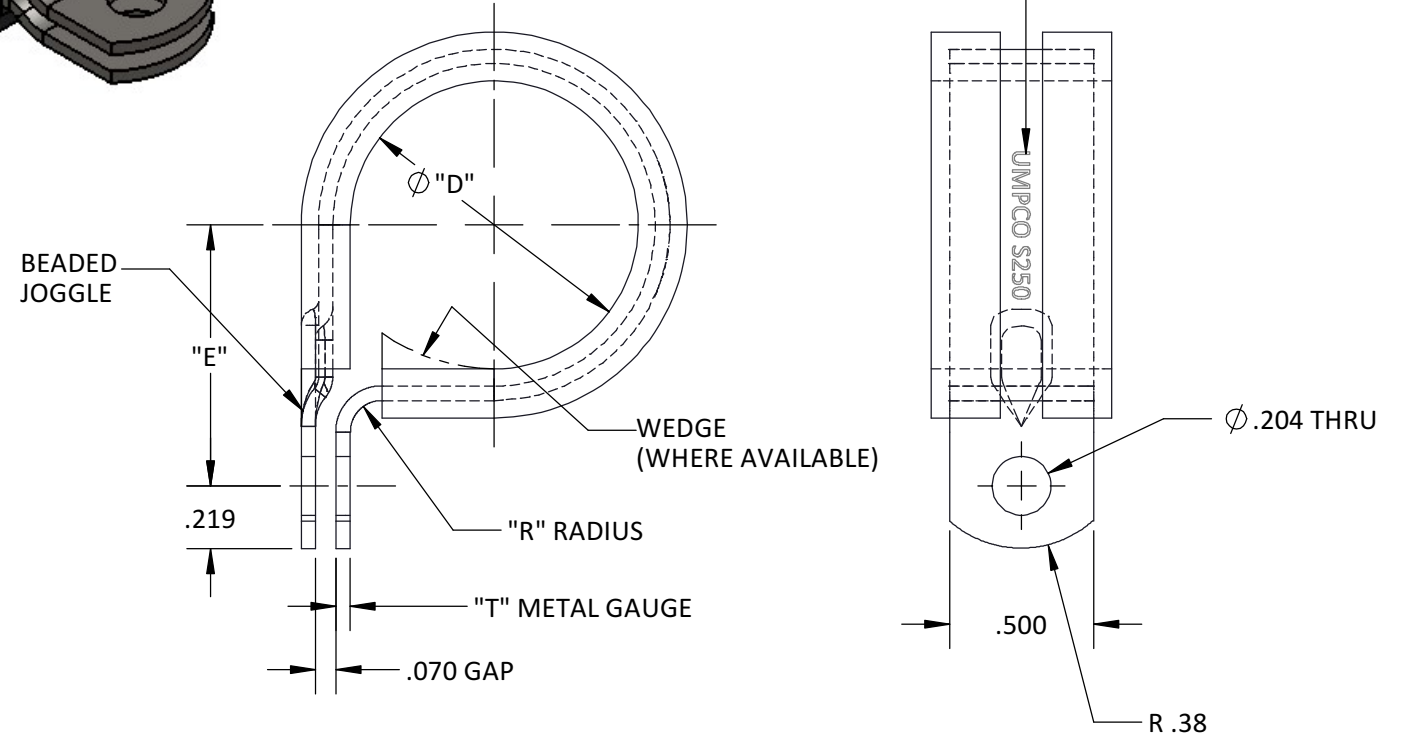
S250 W D HL 16  
 DIA "D" IN 1/16" INCREMENTS  
 CUSHION CODE 2  
 METAL CODE (OMIT FOR "NO CODE")  
 WEDGE CODE (OMIT WHEN NOT APPLICABLE)  
 BASIC PART NUMBER

**NOTES:**

- 1 OPTIONAL FINISH: CADMIUM PLATE GOLD PER AMS-QQ-P-416, TY. II, CL. 2
- 2 USE A (-) FOR "NO CODE" CUSHION WHEN USED WITH "NO CODE" METAL.
- 3) CLAMPS FURNISHED IN THE NORMAL OPEN (SPRINGBACK) CONDITION.
- 4) INSPECT PER MIL-C-8603 CLOSURE TEST.



S250



SHEET 1 OF 1

|  |  |     |       |  |  |                          |             |
|--|--|-----|-------|--|--|--------------------------|-------------|
| REFERENCES:                                      |  |     |       |  |  |                          |             |
| LIMITS ON DIMENSIONS UNLESS OTHERWISE SPECIFIED: | ANGULAR:   | X   | ± 5°  | <b>UMPCO . INC.</b><br>7100 LAMPSON AVE.<br>P.O. BOX 5158<br>GARDEN GROVE, CA. 92846 |  | FSCM/CAGE CODE No. 18076 |             |
|  | DECIMAL:   | .XX | ± .03 |  |  | KEL                      | KEL         |
| GENERAL MACHINE FINISHES EXCEPT AS NOTED:        | PROPRIETARY AND CONFIDENTIAL<br>THE INFORMATION CONTAINED IN THIS DRAWING IS THE SOLE PROPERTY OF UMPCO, INC. ANY REPRODUCTION IN PART OR AS A WHOLE WITHOUT THE WRITTEN PERMISSION OF UMPCO, INC IS PROHIBITED. |     |       | 03/10/82   |  | 03/10/82                 |             |
|  | INTERPRET GEOMETRIC TOLERANCING PER: ASME-Y14.5M   |     |       | 04/21/99   |  | ENGR                     |             |
| REMOVE ALL BURRS AND BREAK SHARP EDGES .010 MAX  | ACT. WGHT.   | -   |       | CLAMP, LOOP-CUSHIONED, #10 MOUNTING SCREW  |  | SIZE                     | SCALE: NONE |
|  | CALC. WGHT.  | -   |       | PART AND/OR ASSEMBLY DESCRIPTION   |  | <b>B</b>                 | <b>S250</b> |
|  |  |     |       |  |  | PRINT NUMBER             |             |