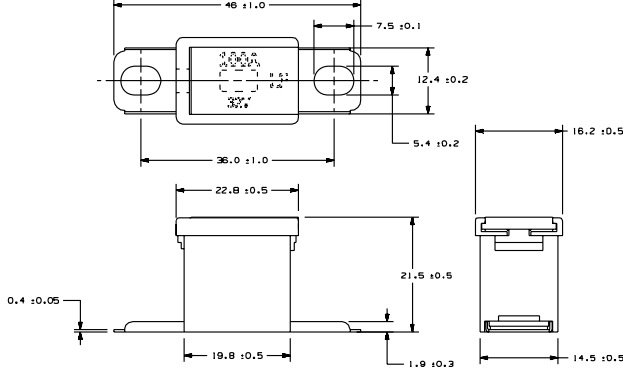


PART NUMBER	CURRENT RATING (A)	BODY COLOR	RATED VOLTAGE
02B3020.MXJ	20	LIGHT BLUE	32V
02B3030.MXJ	30	PINK	32V
02B3040.MXJ	40	GREEN	32V
02B3050.MXJ	50	RED	32V
02B3060.MXJ	60	YELLOW	32V
02B3070.MXJ	70	BROWN	32V
02B3080.MXJ	80	BLACK	32V
02B3100.MXJ	100	BLUE	32V
02B3120.MXJ	120	WHITE	32V
02B3140.MXJ	140	REDDISH BROWN	32V

% OF RATED CURRENT	OPENING TIME	
	MIN	MAX
110%	14,400 SEC.	-
200%	5 SEC.	100 SEC.
350%	0.2 SEC.	7 SEC.
600%	0.04 SEC.	1 SEC.



METRIC

UNLESS OTHERWISE SPECIFIED, DIMENSIONS ARE IN MILLIMETERS. DIMENSIONS IN BRACKETS [] ARE INCHES UNLESS OTHERWISE SPECIFIED. DIMENSIONS DO NOT INCLUDE PLATING.

⑥ DENOTES CRITICAL CHARACTERISTICS.

CPK DENOTES CPK DIMENSIONS. -MINIMUM CPK VALUE DENOTES A CHARACTERISTIC THAT PROVIDES AN INDICATION OF PROCESS VARIATION. THE MINIMUM VALUE FOR MEASUREMENT AND TRACKING TO BE OBTAINED IN LITTELFUSE INSPECTION INSTRUCTIONS

CP DENOTES CP DIMENSIONS. -MINIMUM CP VALUE DENOTES A CHARACTERISTIC THAT PROVIDES AN INDICATION OF PROCESS VARIATION. THE MINIMUM VALUE FOR MEASUREMENT AND TRACKING TO BE OBTAINED IN LITTELFUSE INSPECTION INSTRUCTIONS. DIMENSIONS SHOWN ON DRAWINGS ARE INITIALLY LOGGED TO ALLOW FOR MAXIMUM TOOL LIFE

NO	COMPONENT NO	DESCRIPTION	QTY/M	U/M
BILL OF MATERIAL				
MATERIAL SPEC				

LTR	DATE	REVISION	CHK	APD
A	06/14/06	0007828R-RELEASE 0MB		
B	03/26/10	02B30140.MXJ & 02B3140.MXJ 0MB		

COPIES TO

- 1 9 18 FINISH
- 2 10 19
- 3 12 20
- 4 13 21 BRW 0MB
- 5 14 22 CHK
- 6 15 23
- 7 16 24
- 8 17 25 APPD

SCALE 7:1

DATE 04/11/09

DATE SUPER DR

DATE FINISH GOOD WT

UNLESS OTHERWISE SPECIFIED TOLERANCE UNLESS OTHERWISE SPECIFIED ANGULAR +/- .1°

ONE PLACE DEC +/- .4
TWO PLACE DEC +/- .05
THREE PLACE DEC +/- .010
ANGULAR +/- .1°

TITLE FUSE - PAL 283 AT IS 32V SLOW BLOW

REVISION Dwg. No. A OL-02B3000.MXJ

OUTLINE

